

Coldbeam

JF545









Coldbeam GmbH




Mühltorstrasse 2, 71665 Vaihingen a.d. Enz | Telefon: +49 7042 8197730 | Telefax: +49 7042 8197731




info@coldbeam.com | www.coldbeam.com



	SPX1275CDH	 13.700 kg
	Abnehmbares Gewicht	3.500 kg
	Gummipads	300 kg (92 Stk.)
	JIB L426	1.200 kg
	Arbeitskorb	200 kg


	Inklusive Kettenfahrwerk	 15.500 kg
	5450 x 1840 x 2830 mm	 28 m
	6700 x 6700 mm	 32,5 m



	KubotaV 3307-DI-T-E3B
	55,4 kW / 74 PS
	13 kW / 17,4 PS 400 V

	2600 kg 60 m - Ø 12 mm	
		
2600 kg	1	36,5 m/min
2400 kg	2	40 m/min
2200 kg	3	43,5 m/min
2040 kg	4	47 m/min



 0 - 28,2 m

 -15° - 80° / 30 sek.

	0,85 kg/cm ²
	2,5 km/h



 11.250 kg

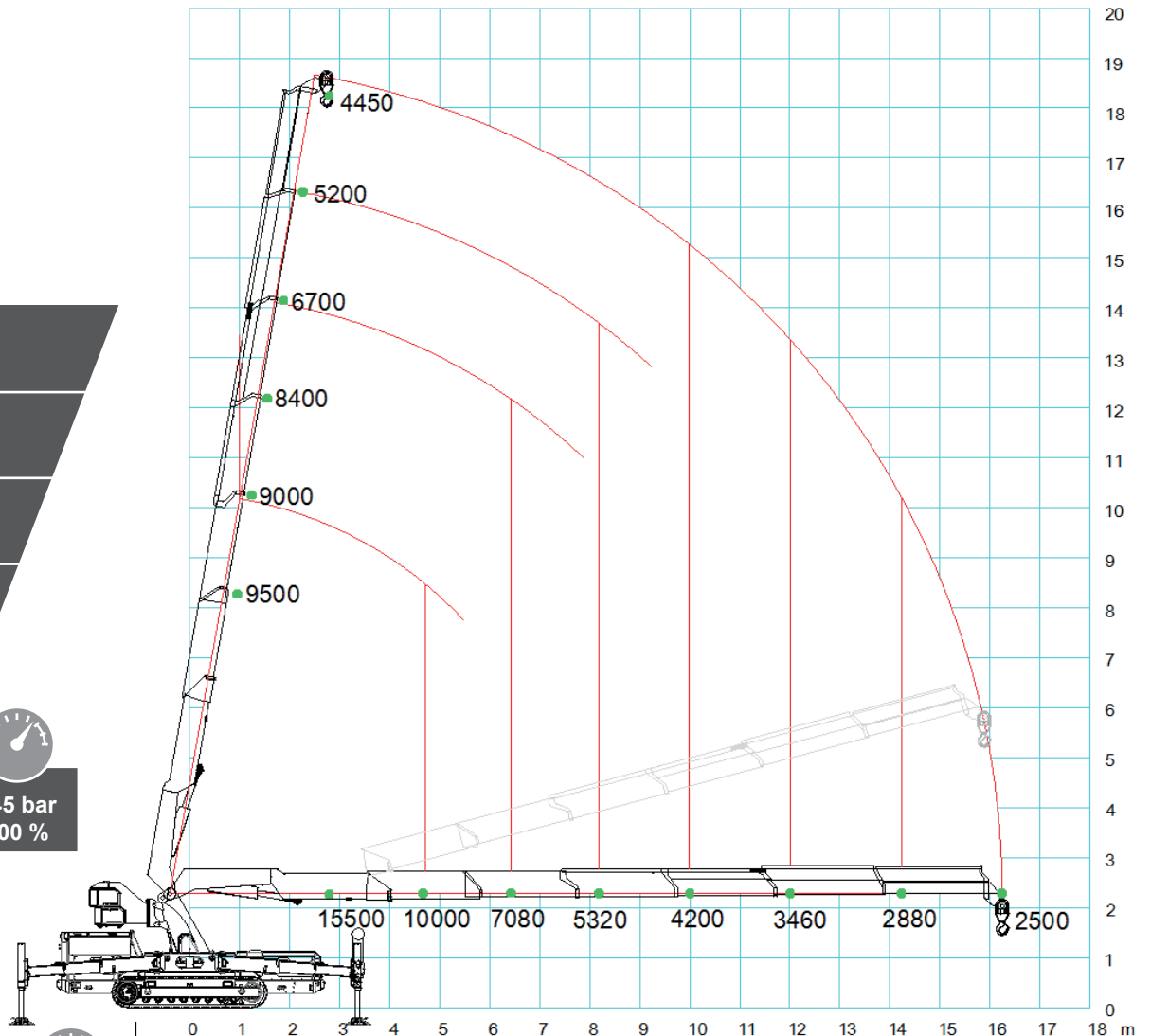
 360° / 1 U/min



 20°

Hauptausleger

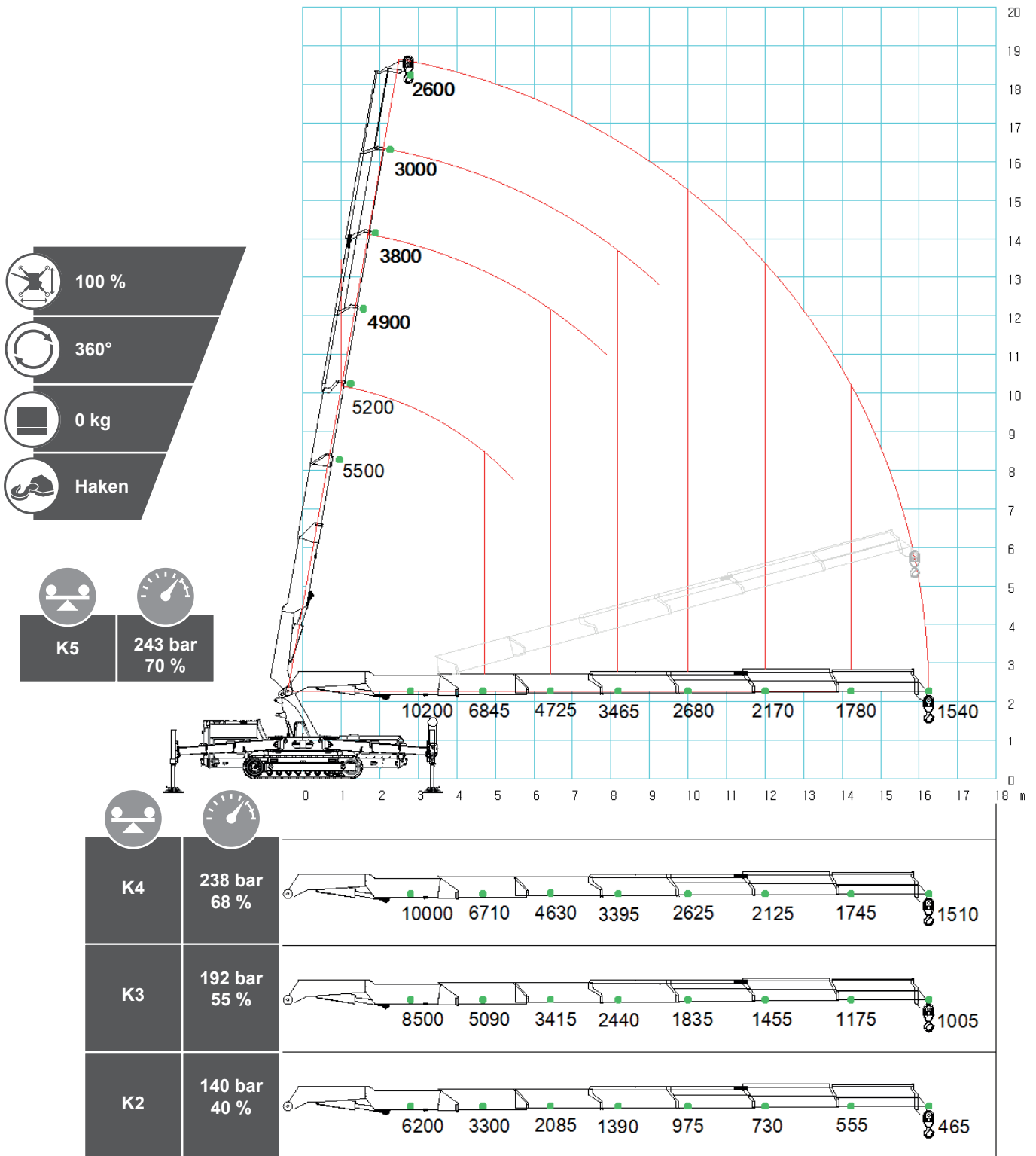
-  100 %
-  360°
-  3500 kg
-  Haken

-  K5
-  345 bar
100 %

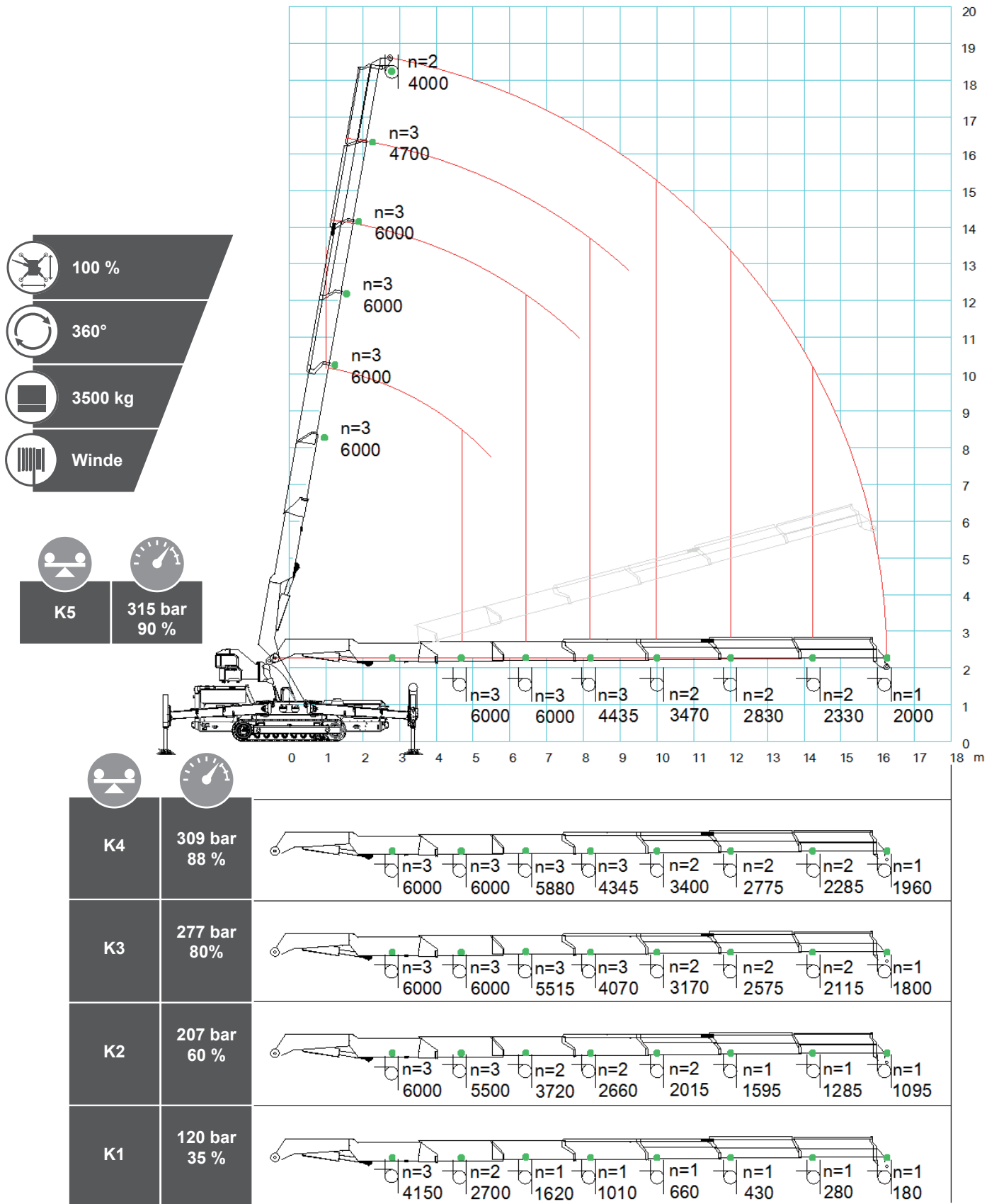


			
K4	338 bar 98 %		15190 9800 6940 5215 4120 3390 2820 2450
K3	277 bar 80 %		13000 8020 5595 4150 3240 2645 2185 1870
K2	207 bar 60 %		9500 5605 3800 2740 2085 1665 1355 1165
K1	120 bar 35 %		4250 2780 1700 1090 730 500 350 250

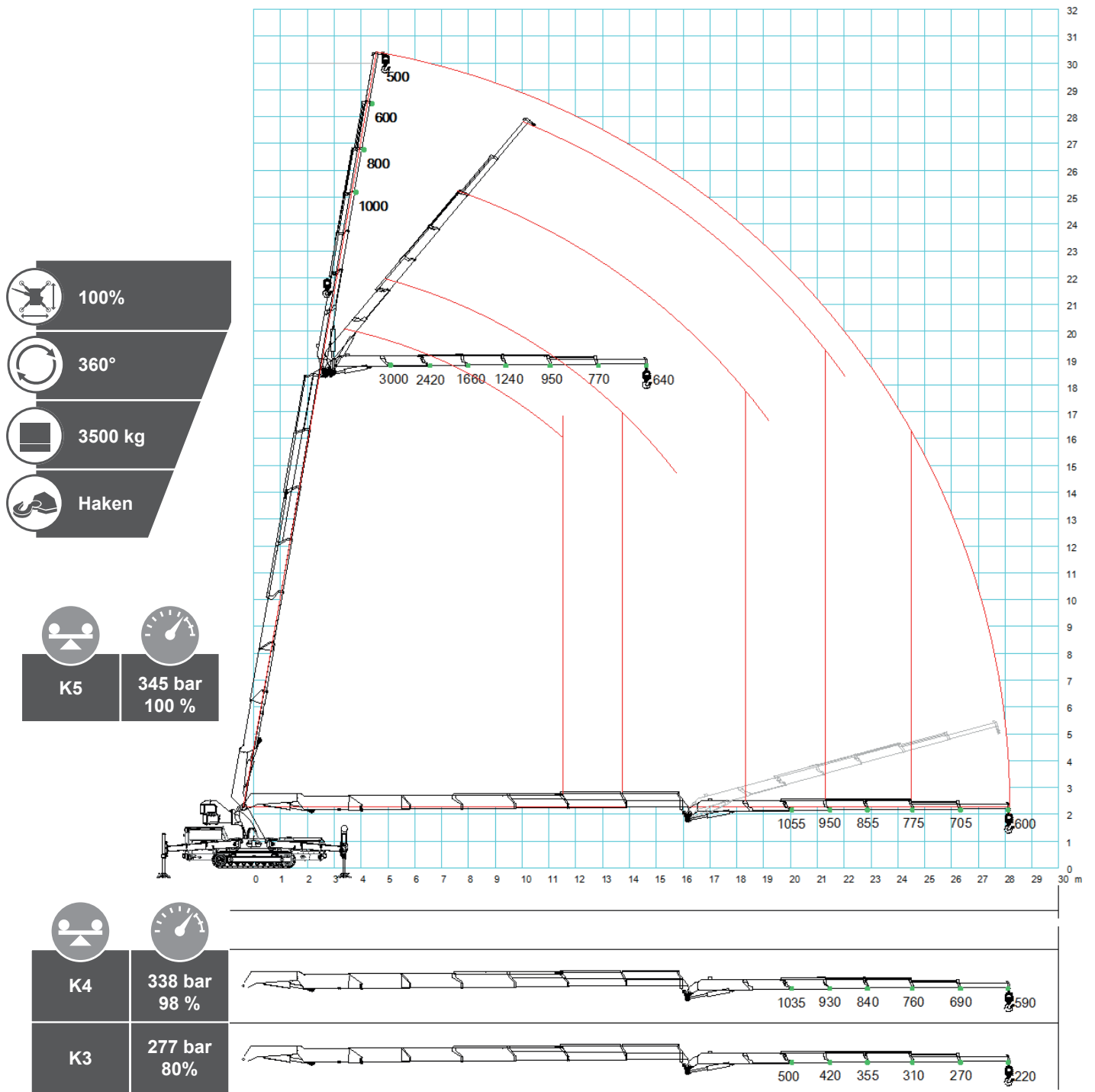
Hauptausleger ohne Kontergewicht



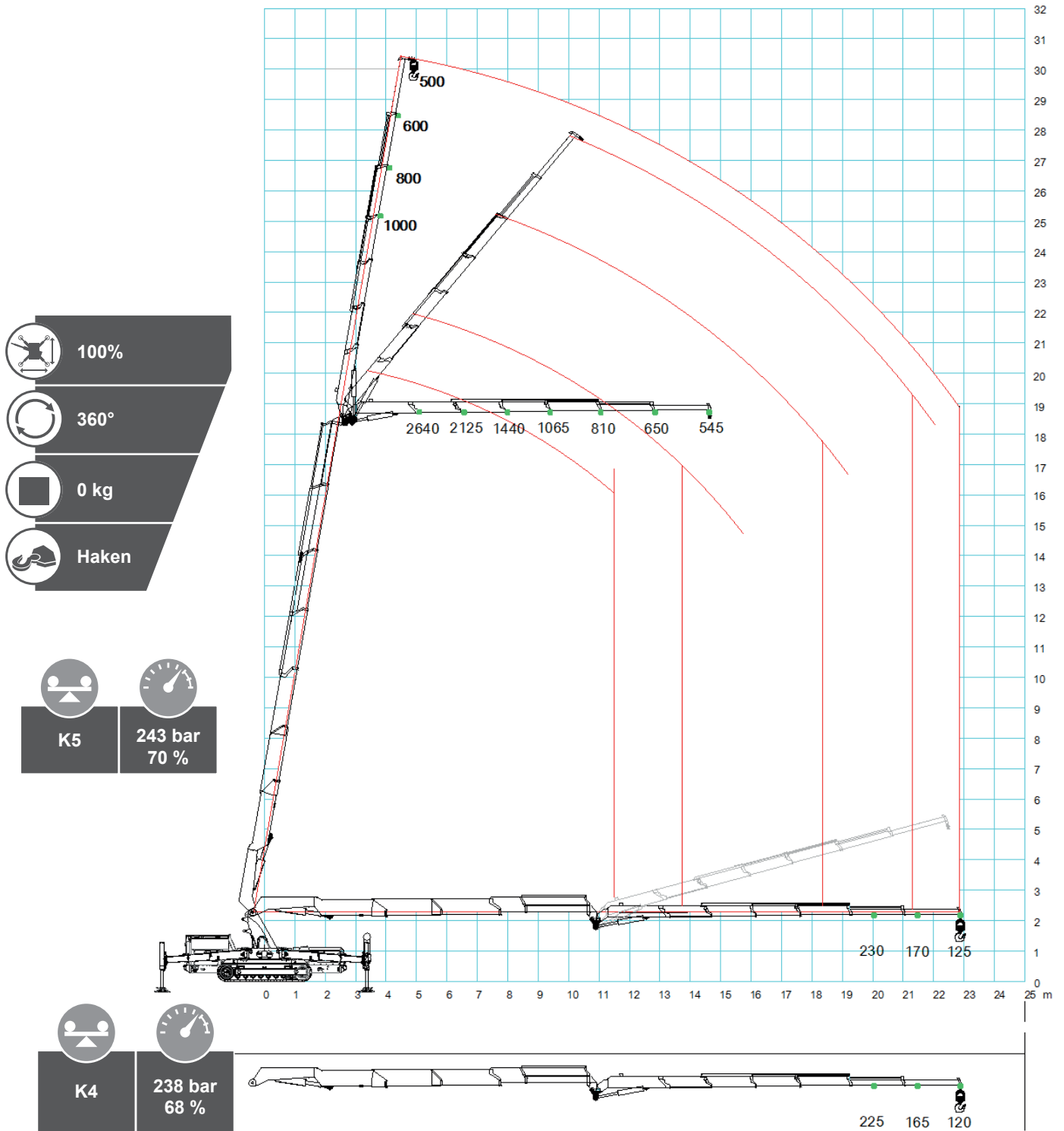
Hauptausleger im Windenmodus



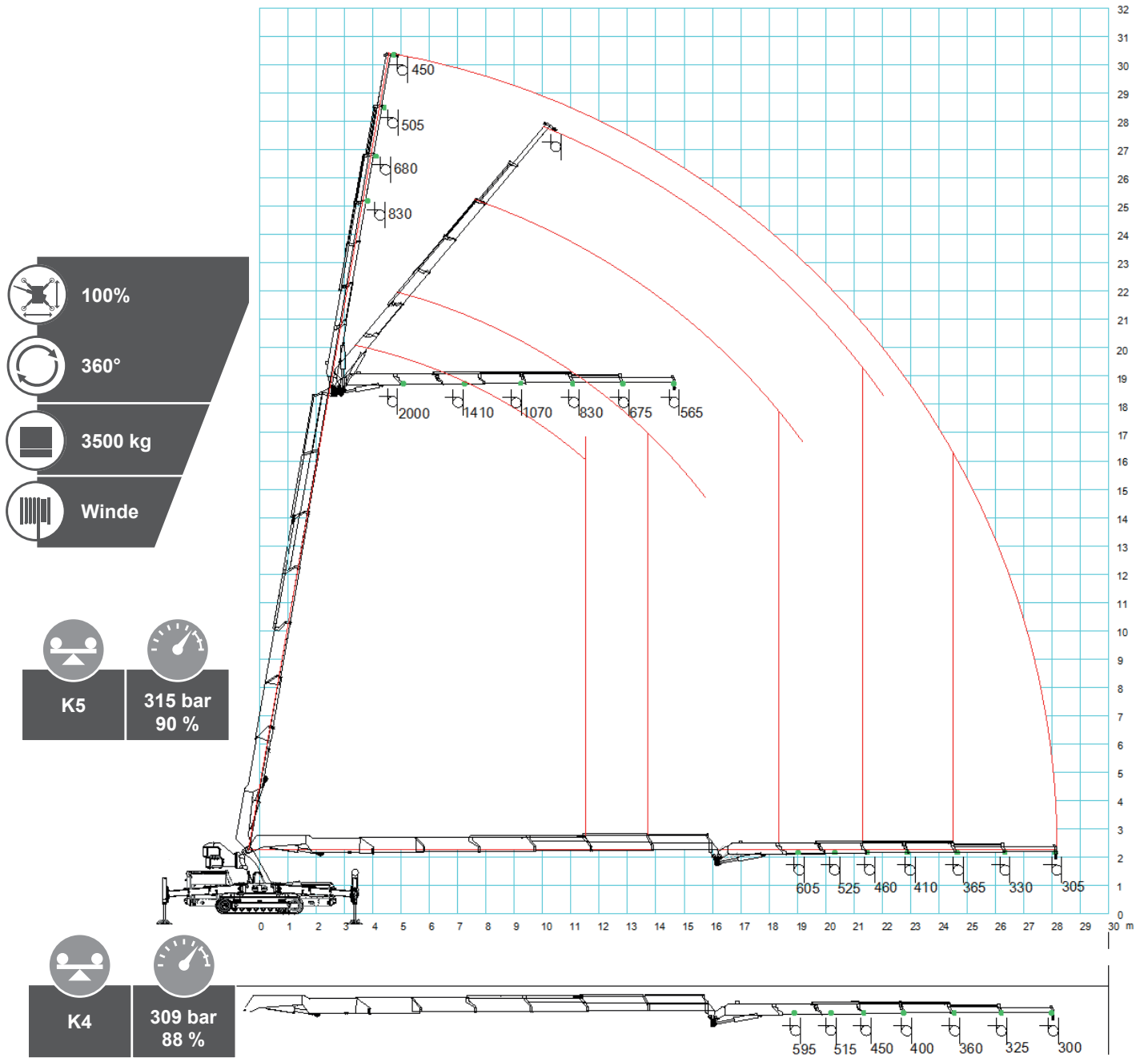
Hakenmodus mit JIB L426



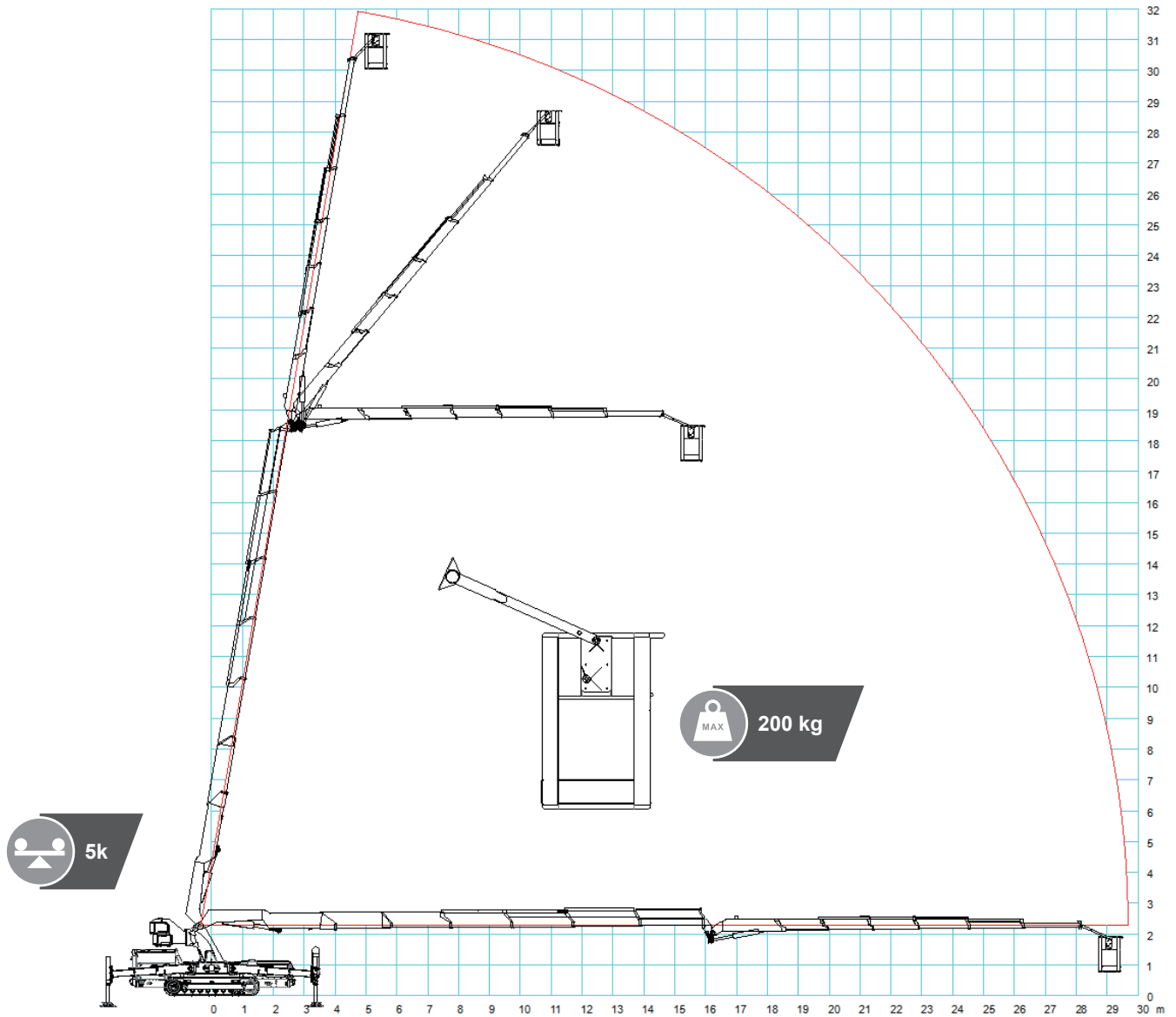
Hakenmodus mit JIB L426 ohne Kontergewicht



Windenmodus mit JIB L426



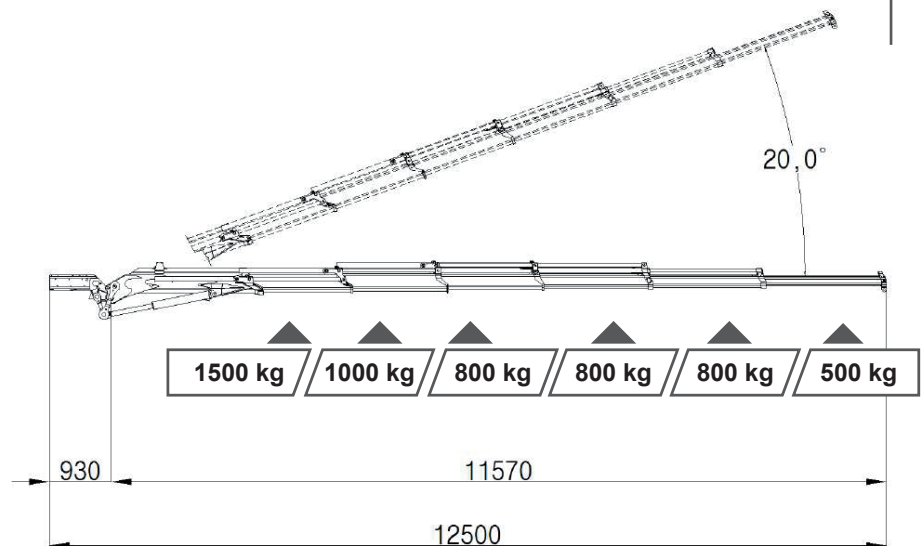
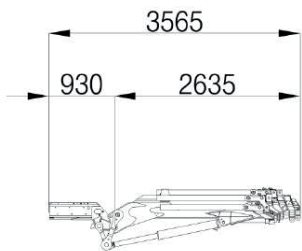
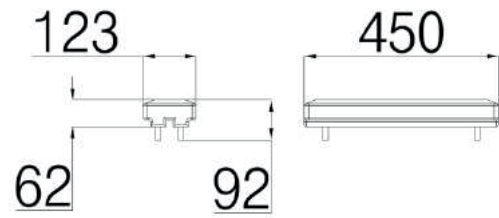
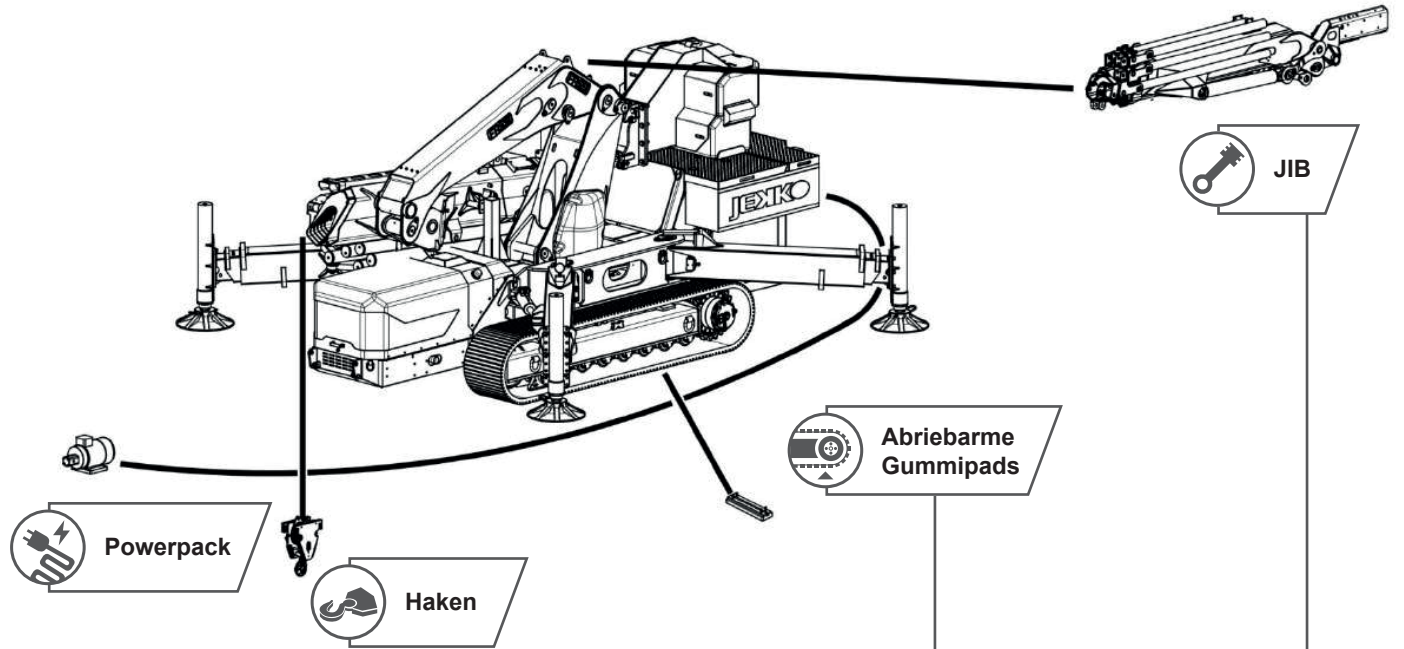
Arbeitskorb

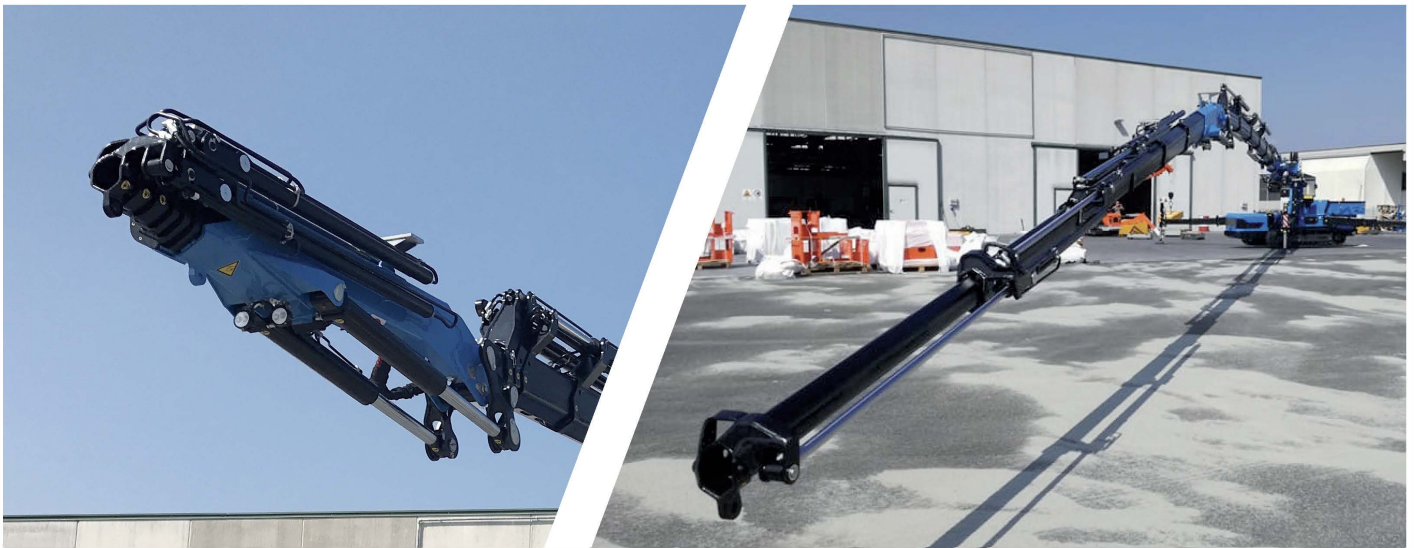


- 100%
- 360°
- 3500 kg
- Arbeitskorb



Ausstattung





Sicheres Heben auf engstem Raum.

Coldbeam

Coldbeam GmbH
Mühltorstrasse 2
71665 Vaihingen a.d. Enz
Telefon: +49 7042 8197730
Telefax: +49 7042 8197731

info@coldbeam.com
www.coldbeam.com



Alle technischen Angaben unter
Vorbehalt nach Datenstand 02.2020.