



27th Wayfarer International Rally 2023 Strangford Lough, Northern Ireland
Arriving Friday 9 June, Departing Sunday 18 June.
Sailing Saturday 10 to Saturday 17 June 2023



East Down Yacht Club look forward to welcoming you to our club.

Introduction

East Down Yacht Club <https://edyc.co.uk/> is situated on a 9-acre site on the western shore of Strangford Lough in County Down, Northern Ireland. The Club is 1 mile north of Killyleagh and a 45-minute, 20 mile drive south of Belfast. The facilities include a clubhouse, car parking, a boat-park, caravan and camping park, pontoon and slipway.

The Club is at the end of a private lane and there is no permanent signposting. Please see the Club Location as it will prove useful in locating the laneway. Lat and long 54.41285, -5.65349 What3Words ///travel.spreading.sprays

Support services and amenities are available in Killyleagh one mile to the south and a mini market at Balloo five miles to the north. Killyleagh has a picturesque 13th century Killyleagh Castle – one of Ireland's oldest inhabited castles.

The upstairs function room and well stocked bar encourages a relaxed comfortable atmosphere. There is also a small kitchen and a downstairs function room which can seat approximately 70 people. The barbecue and picnic areas provide additional space for hospitality (weather permitting).



The club has 23 Wayfarers from Mk1s to Mk4s some sailed regularly and others more occasionally. The club also has 23 Leisure 17s, 10 Hunter Impalas and a range of other cruising and racing boats. The club has approx. 240 memberships of which 90 are single and 60 are family.

Getting to EDYC.

The main ferry ports in Ireland are Larne, Belfast, Dublin, Rosslare and Cork.

We would expect visitors from Ireland, GB and Continental Europe to bring their boats.

We will be asking club members and visitors to host transatlantic visitors on their boats.

I will continue to see if I can get reduced rates for the ferry crossing and if successful, I will post the info on the EDYC web site in the events section.

Transatlantic visitors will probably arrive in Dublin or Belfast International Airports. There are coaches from both airports to Belfast and we should be able to arrange to pick you up from the Dublin coach at Sprucefield or Belfast or Belfast Airport. We can discuss that individually, closer to the time. If you are traveling to Ireland you may wish to leave your boat at EDYC before or after the event or indeed take your boat to explore other areas such as the Shannon or Erne systems.

Whilst a car might be useful for those visiting from North America you will not get much benefit from a car the week of the sailing and I am sure there will be seats available in the cars of the other attendees if we are going off site for a dinner, shopping etc. If you are staying off site in an AirBnB or other accommodation a car would be necessary as there is not a frequent public transport service in the area.

Access to the Club – Warning

Access to the club is down a tree lined single track laneway with a few passing places with overhanging branches.

If you have a high top camper or are carrying a mast on the roof be extremely careful. One of our members unfortunately caught his wayfarer mast around a tree whilst pulling over to let someone past. A new mast was required.

Sailing

Strangford Lough is a marvellous tidal playground for Wayfarers just large enough for interesting day sailing and small enough to never be too far from home.

With the Covid lockdown and the Staycations in 2021 we organized a week of group sailing for EDYC Club members with small boats.

The account of this week is in the Winter 2021 UKWA magazine. We would plan to follow a similar programme for the International Rally.

If you missed the article, it can be found at <https://edyc.co.uk/2022/01/18/2021-wayfarer-cruising-week-report-edyc/>

I am afraid I cannot promise the weather we got that week, of record-breaking temperatures. This past week the week of the event next year has been around 15 to 19 degrees max and 9 to 11 degrees min and with mixed weather conditions typical of June weather on Strangford. Over the past month we have a couple of our club races cancelled because of high winds.

Many of our sailing trips on Strangford are governed by the tides (flow, HW, LW) and the wind direction and strength.

Possible sailing venues for the week.

Day	Destination	LW EDYC (Same as Quoile)	HW EDYC (same as Quoile)	Narrows North Flow begins
Fri 9 June – Arrival	Set up Camp at EDYC			
Sat 10 June	Castle Ward	13:06	19:23	13:58
Sun 11 June	Ballyhornan	14:09	20:28	15:03
Mon 12 June	Greyabbey Out TBC	15:12	21:32	
Tue 13 June	Greyabbey In TBC	16:10	22:29	
Wed 14 June	Quoile	17:05	23:22	
Thur 15 June	Whiterock	17:55	11:34	
Fri 16 June	Ardkeen	18:40	12:24	
Sat 17 June	Racing? Regatta?	19:22	13:11	
Sun 18 June – Departure	Break Camp and depart.			

The above table uses.

Tidal Diamond B – North going flow in the Strangford Narrows begins 3.5 hours before HW Belfast. (3 hours from my experience several weeks ago.)

The Quoile secondary “port” is 1:55 hours after Belfast. The Tides at East Down Yacht Club are similar to those for the Quoile. HW at Strangford village is 90 minutes after Killard Point only 4 miles away along the Narrows.

Whilst we can predict the tides none of us can predict the wind and weather so the above suggestions may change.

The decision to go sailing on any particular day will be the sole responsibility of the helm and they should ensure that they are sailing within their capability and properly equipped.

All boats should have reefing main and genoa as conditions can change dramatically within a short period of time.

An anchor and line for holding the boats when we go ashore would also be important. A small outboard would also be useful if you have one. The boats will be taken out of the water each evening after sailing using the club slip.

You may also wish to come prepared to camp on the 12 June when the boats will dry out overnight near Greyabbey at the north of Strangford. The overnight camp will be at the discretion of the National Trust which may or may not give permission.

All boats must provide evidence of insurance of at least £3m.

All applications and payment should be received by 30 March 2023. Applications received after that date may not secure a place at the rally or the welcome or farewell dinners if numbers are limited.

The clubs have safety boats available and we can make a decision daily on their use during the week, based on the experience of those sailing and the conditions. As stated earlier all boats should be in seaworthy conditions and have the ability to reef.

Accommodation.

The club has room for tents and campervans. The tents will mainly be camped around the childrens play area 54.413887, -5.646654 and the campervans may be in this area also or may be on some of the concrete closer to the club house 54.414476, -5.644877. The exact locations will depend on numbers staying on or off site and whether in tents or campervans. There are no marked pitches. Whilst I have not measured it out, we probably have room for about 15 tents and 10 Campervans.

The club is a relatively rural area and if you are planning to stay off site you may want to secure accommodation through the likes of AirBnB or Booking.com sooner rather than later to get something relatively close to the club. A local restaurant has the following link on its website.

<https://www.balloonns.com/baloo-house/where-to-stay-near-baloo-house>

Cost

The costs are as follows.

£40 per person for Rally Participation.

£10 per night per tent or campervan.

A welcome and farewell meal together will be organized although the location dates and price still to be determined. To assist with the planning of this I have asked for a deposit of £20 which should cover an on site BBQ or the deposit for an offsite dinner which could cost up to an additional £10. (Charges in pounds sterling)

Possible options are onsite provided by a local caterer or offsite at one of the following depending on numbers attending and interest. Local hostelrys have the ability to take up to 60 people. If offsite we may need to move the Welcome and Fairwell meals away from the week-end to enable them to accommodate the group.

<https://www.dufferinarms.co.uk/> Max 50 people – currently £20 and up

Smugglers Table Killyleagh. <https://www.facebook.com/TheSmugglersTableRestaurantKillyleagh/>

– a smaller venue.

<https://www.balloonns.com/baloo-house> (Max 50 or 60 people – currently £25 and up – Hot or Cold Buffet Sunday to Thursday Managers Vanessa or Robbie)

<https://www.dafteddys.co.uk/> (Lloyd Max 15 to 20 people)

On Site BBQ from a local caterer.

Evening Programme

We will have the club to ourselves most of the week including the upstairs bar.

Wednesday evening and Saturday afternoon are club racing and the club will be busier at these times. The Strangford Lough regatta programme is usually put together around March so there may be club racing or a regatta on the Saturday's of the Rally.

The bar and outside seating area will be available to meet together. If you have an instrument why not bring it along or other ideas for evening entertainment feel free to contribute. We are still planning activities and they will be of an informal nature. Ralph has kindly agreed to give his talk on the Nine lives of a Wayfarer Sailor.

Communication

If you have a marine radio bring it with you. We use Channel 37 or M1 for club communication. A waterproof bag for your phone would also be useful.

As many of us will not know each other if you are happy to forward a passport type photo, your name, club and boat number we would put together a list of attendees to help us get to know each other.

We would also plan to put a Whatsapp Group together for those attending.

Non Sailing Activities.

Should you chose not to sail on some of the days or if conditions are unsuitable there a number of other options in the area.

<https://discovernorthernireland.com/> gives an overview for tourists visiting Northern Ireland.

Close by is Delamont Country Park and Tyrella beach.

<https://www.newrymournedown.org/delamont-country-park>

<https://discovernorthernireland.com/things-to-do/tyrella-beach-p676011>

There are cycle routes around Strangford Lough.

<https://www.sustrans.org.uk/find-other-routes/strangford-lough-cycle-trail>

In the winter a group of EDYC members meet up to walk the Mourne Mountains.

<https://walkni.com/mourne-mountains-destination/>

There are also a number of National Trust Properties around the Lough.

<https://www.nationaltrust.org.uk/days-out/northern-ireland>

If you are staying longer you may wish to travel South or West.

<https://www.ireland.com/en-gb/features/press-the-green-button/>

Maps and Charts.

I would recommend purchasing the Strangford Lough Water Resistant Activity Map in advance of your visit.

<https://www.amazon.co.uk/Strangford-Lough-Irish-Activity-Map/dp/190530627X>

A chart of Strangford Lough is also available. https://www.bookharbour.com/admiralty-chart-2156-strangford-lough?gclid=CjwKCAjw46CVBhB1EiwAgy6M4vTqz-JKIESgTsqO2gHjoJ5J2ZNXVKY1_s9dlj3v5KRgkSdGUs-KLhoCRW0QAuD_BwE

Purchasing a chart is probably not necessary and one hangs on the wall in the club house which you can refer to. Having said that I have one.

Best Regards from

John and Rosemary Miller and our friends at East Down Yacht Club.

The 27th International Wayfarer Rally

10th –17th June 2023
East Down Yacht Club, Northern Ireland



In association with



In July 2021 we ran a family week of dinghy cruising in Strangford Lough.

See 2021 Winter Wayfarer News.

We would like to share our sailing playground with fellow international wayfarer sailors and we have organized a rally to give you this opportunity.

For full details and costs:

www.edyc.co.uk

sailing/events

or

www.wayfarer.org

cruising/news.

Book by 1 April 2023 to secure your place.

Contact:

jmillermarine@gmail.com



EDYC

EDYC hosted the 2001 Worlds and has space for both tents and campervans.

Boat launching will be from our club slip.

We may not be able to promise you warm weather but we will give you a warm Irish welcome

Céad míle fáilte

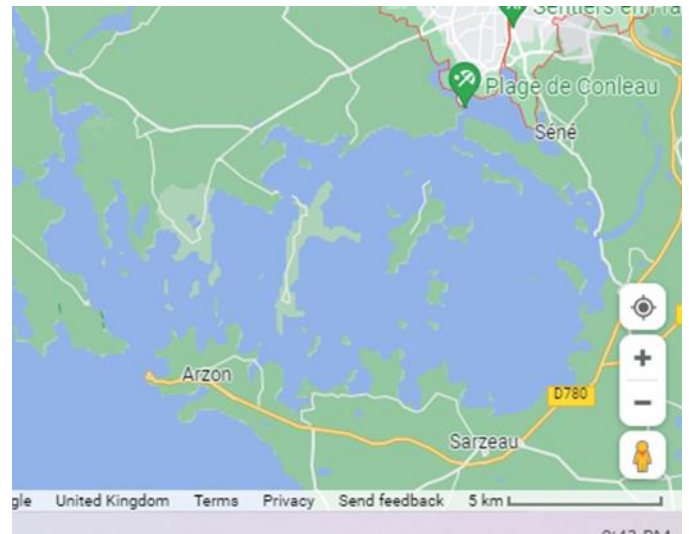
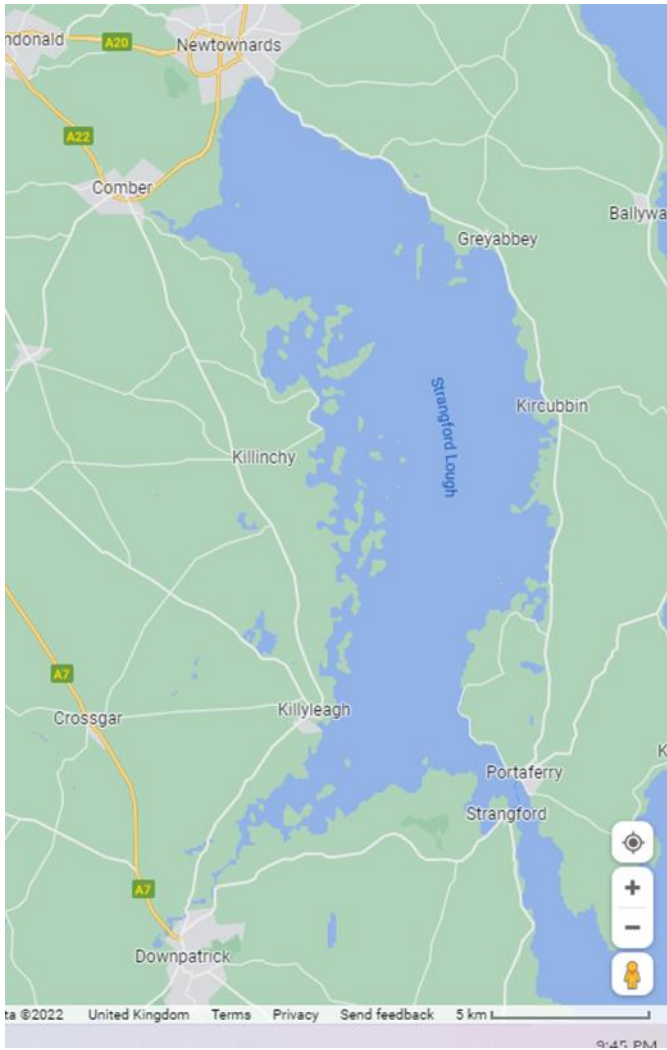
An Area of Outstanding Natural Beauty and an Area of Special Scientific Interest, Strangford Lough is one of the most richly bio-diverse regions in Europe, with over 2,000 marine species spread across 150km².



Strangford Lough is Ireland's largest inland sea:
<https://www.youtube.com/watch?v=iY6S2UmiHbk>



Stranford Lough and the Golfe du Morbihan on the same scale.



Upstairs Bar area East Down Yacht Club



Downstairs Function Room. EDYC



Kitchen East Down Yacht Club



Outside Picnic Area EDYC



View down the Dorne from the front of the club



Main Tent area looking West



Main Tent Area looking East.

This was the scene during the UK Open Canoe Sailing Association visit June 2022.

When the Wayfarer's visit I would propose the Campervans are one the concrete to leave more room for the tents in this main camping area. There may also be other areas where one or two tents could be erected.

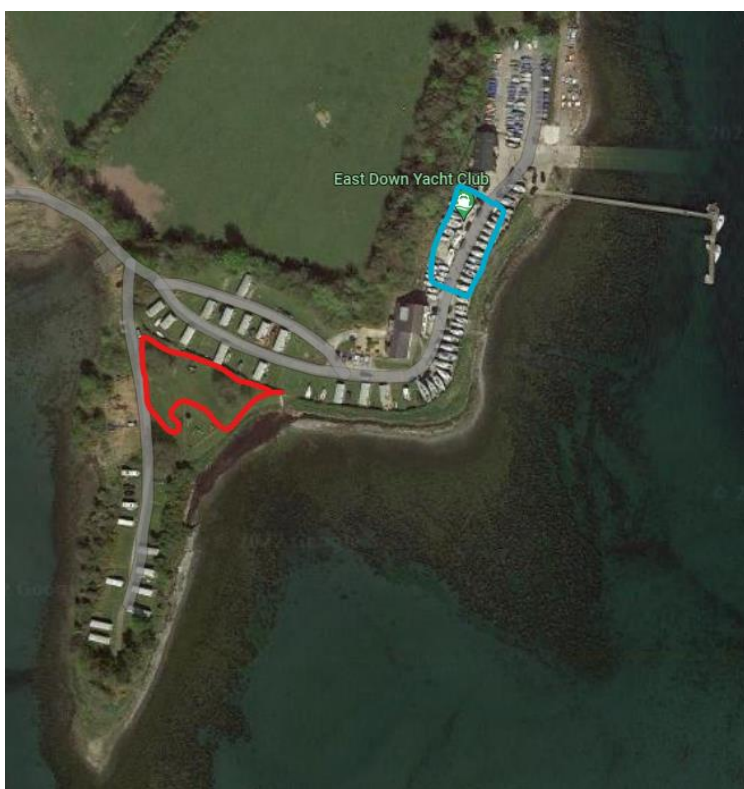


Laneway to the Club

BEWARE OF TREES ATTACKING YOUR MASTS OR THE SIDE OR TOP OF YOUR CAMPERVAN.

ESPECIALLY IF YOU MEET A CAR ON THE LANE.

A FRIEND CAUGHT A BRANCH WITH HIS MAST AND BENT IT. NOT PRETTY.



East Down Yacht Club Site – Red area main Tent area, Blue area main Campervan area

View taken in the winter when the cruisers are on the hard



. Laneway and EDYC Grounds