

# DEMOLITION ROTATING PULVERIZERS

for excavators from 3 to 90 ton

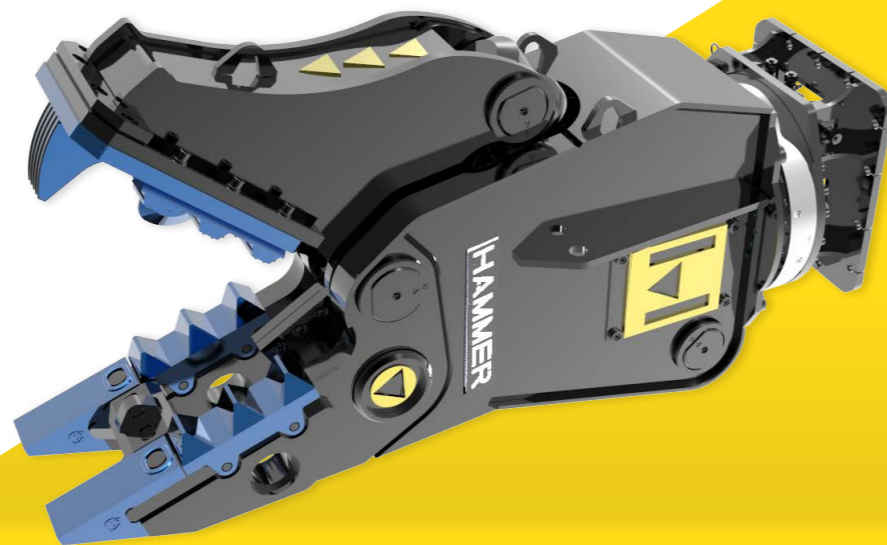


Find out more



## Designed to last!

- Double motors for an excellent rotation and high power
- Integrated "relief" valve to avoid pressure peaks on the rotating motor
- Double-turn ball bearing (from model FRK17 up)
- Designed and built to achieve high crushing force



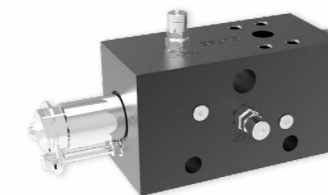
THE ROTARY PULVERIZERS OF THE NEW FRK SERIES HAVE BEEN DEVELOPED FOR PRIMARY AND SECONDARY DEMOLITION.

ALL THE PARTS THAT MOSTLY UNDERGO WEARING ARE EASILY REPLACEABLE

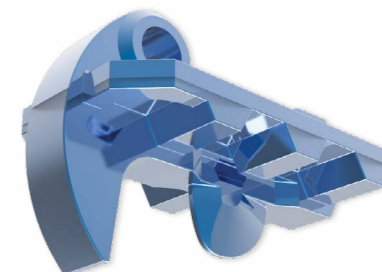
- Excellent speed/power to weight ratio
- Cylinder fully protected from possible debris during demolition
- Plates designed to achieve an excellent crushing force

PRESSURE UP TO 350 BAR

SPEED VALVE (optional from model FRK17 up)



OPTIONAL



# FRK SERIES

## Application Fields



Mining & Quarrying



Demolition & Renovation



Construction

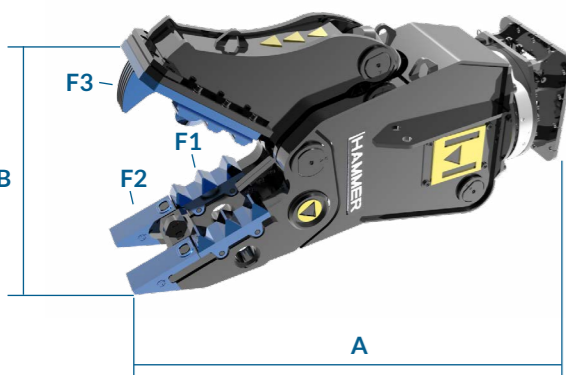


Metallurgical Industry



Recycling

## TECHNICAL DRAWING



All illustrations and numerical data in this catalog are purely indicative and subject to change at our discretion and without notice. We therefore reserve the right to modify them with a view to improving and continuously developing our product.

Models		FRK03	FRK06	FRK10	Models		FRK13	FRK17	FRK21	FRK26	FRK32	FRK42	FRK60	FRK80
Carrier weight	t	3-8	6-13	9-17	Carrier weight	t	12-20	14-23	16-27	20-32	26-40	32-55	50-70	65-90
Weight	kg	330	570	1000	Weight	kg	1400	1650	2000	2400	3300	4200	4800	6650
Excavator oil flow capacity	l/min	30-70	60-100	70-110	Excavator oil flow capacity	l/min	110-160	140-200	180-230	200-300	250-350	350-450	400-500	450-600
Excavator working pressure	bar	280	320	320	Excavator working pressure	bar	350	350	350	350	350	350	350	350
360° Rotation	°	360°	360°	360°	360° Rotation	°	360°	360°	360°	360°	360°	360°	360°	360°
Rotation oil flow capacity	l/min	10-25	20-40	20-40	Rotation oil flow capacity	l/min	30-60	40-60	40-60	40-60	40-60	40-60	40-60	50-70
Rotation Pressure	bar	100	100	100	Rotation Pressure	bar	140	140	140	140	140	140	140	140
A	mm	1280	1450	1620	A	mm	1900	2000	2100	2300	2500	2700	2965	3300
B	mm	415	520	605	B	mm	655	720	780	880	1000	1100	1250	1400
Steel blade length	mm	120	150	150	Steel blade length	mm	160	200	200	200	200	250	250	250
F1	t	110	130	150	F1	t	190	195	220	250	370	505	610	735
F2	t	60	65	70	F2	t	120	120	120	140	225	285	345	415
F3	t	35	40	45	F3	t	53	63	70	80	100	115	140	170
Ø Max	mm	28	30	30	Ø Max	mm	40	40	50	55	60	65	70	80

# STATIC PULVERIZERS

for excavators from 15 to 60 ton

## First quality secondary demolition

- Designed and built to achieve high crushing force



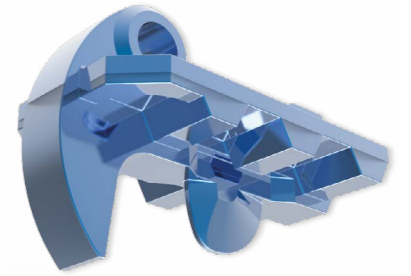
Find out more

**NEW**

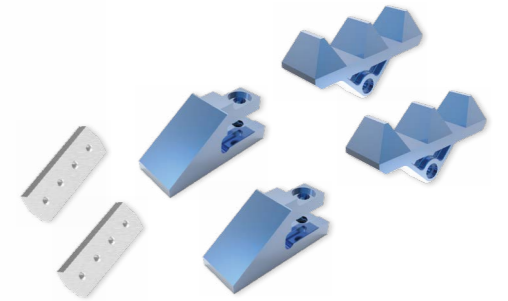
PRODUCT

DESIGNED FOR SECONDARY DEMOLITION, HAMMER STATIC PULVERIZERS CAN BOTH BREAK UP REINFORCED CONCRETE STRUCTURES AND SEPARATE THE STEEL.

ALL THE PARTS THAT MOSTLY UNDERGO WEARING ARE EASILY REPLACEABLE



SPEED VALVE



# FPK SERIES

### Application Fields



Mining & Quarrying



Demolition & Renovation



Construction

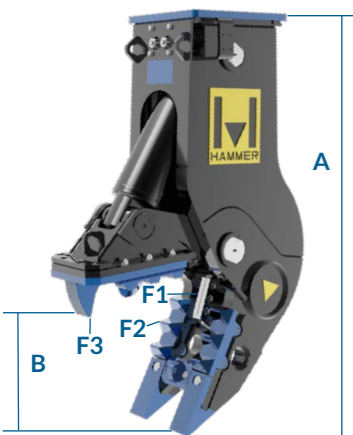


Metallurgical Industry



Recycling

### TECHNICAL DRAWING



Models		FPK16	FPK21	FPK32	FPK42
Carrier weight	t	15-25	20-35	27-45	35-60
Weight	kg	1600	2000	3000	4000
Excavator oil flow capacity	l/min	140-200	200-250	220-280	260-340
Excavator working pressure	bar	350	350	350	350
A	mm	2090	2230	2450	2750
B	mm	745	840	980	1200
Steel blade length	mm	200	200	300	300
F1	t	240	285	355	415
F2	t	100	125	155	200
F3	t	70	80	95	110
Ø Max	mm	35	45	55	70

All illustrations and numerical data in this catalog are purely indicative and subject to change at our discretion and without notice. We therefore reserve the right to modify them with a view to improving and continuously developing our product.

