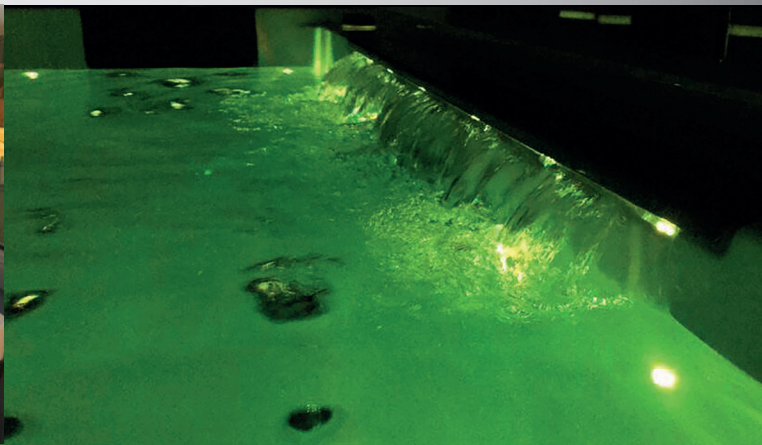
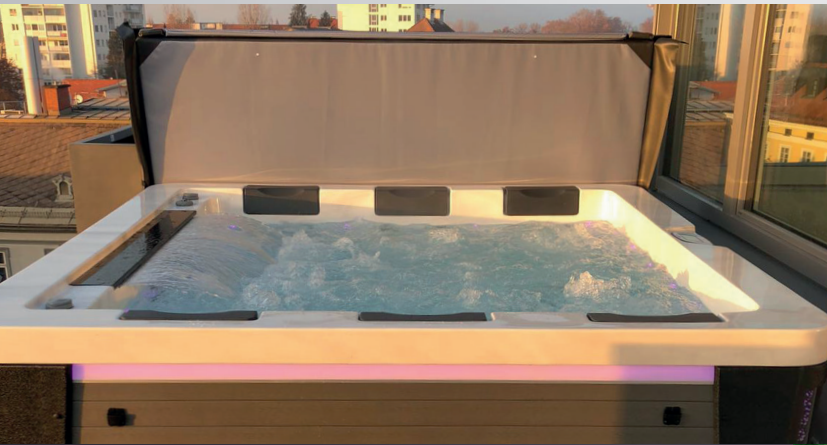
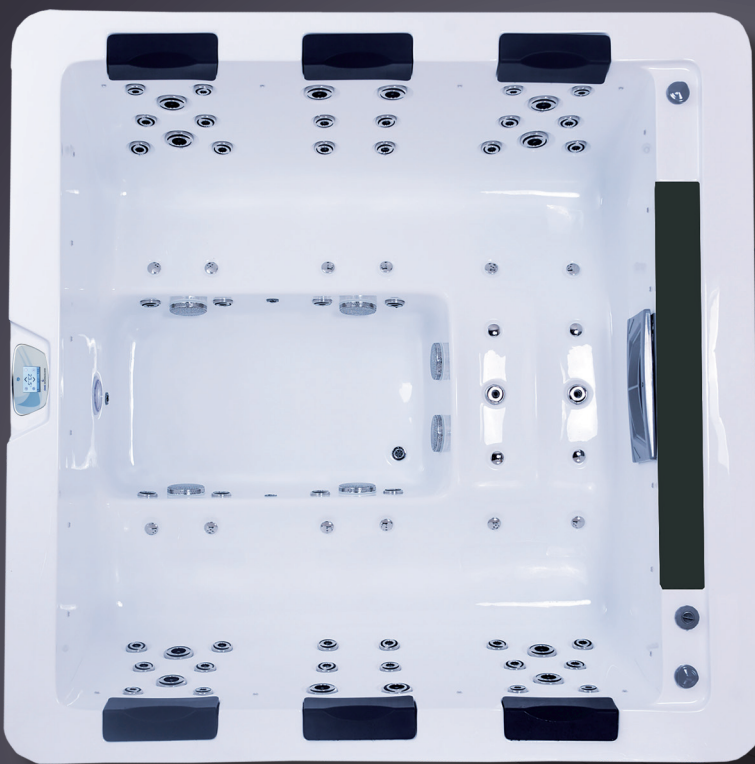


WHIRLPOOL NIZZA



DESIGN SERIE
MODELL DE800
220 X 220 X 96 cm



Ozonator

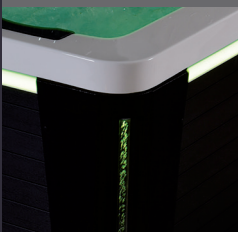
Spa Touch Display

Wave Design Wasserfall



LED Corner Light

Wave Select Verkleidung oder Aluminiumverkleidung

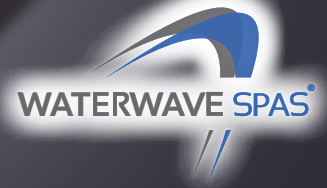
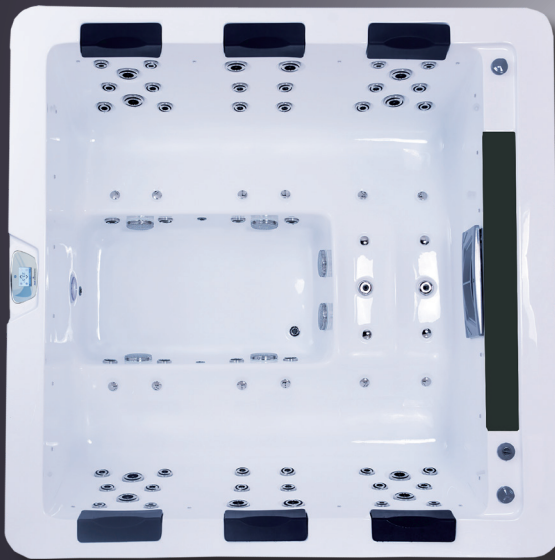


WATERWAVE SPAS®

www.waterwave-spas.com



WHIRLPOOL NIZZA DESIGN SERIE



TECHNISCHE DATEN

Maße:	220 x 220 x 96 cm
Leergewicht:	350 kg
Wasserkapazität:	1.500 l
Gesamtgewicht:	1.850 kg
Verkleidungsfarbe:	siehe Übersicht
Wannenfarbe:	siehe Übersicht
Verkleidung:	WPC Verkleidung

DETAILS

Sitzplätze:	4
Liegeplätze:	1
Wasserdüsen:	54
Beheizter* Airblower:	inkl. Aromatherapie
Luftdüsen:	12
Düsen Gesamt:	66
Fußmassage:	-
Nackentherapie:	-
Isolierung:	Extrem Isolation
Rahmen:	Edelstahlrahmen
Steuerung:	Balboa
Bedienfeld:	SpaTouch
Einzelplatzsteuerung:	-
Wasserpumpe:	1 x 3 PS (2-stufig) + 2 x 2 PS (1-stufig)
Zirkulationspumpe:	Silent Wave Eco
Ozonator:	inklusive
UV Desinfektion:	inklusive
Filter:	2 x 50 sq Ft.
Wasserablass:	inklusive
Heizung:	3 KW Balboa
Elektrische Anforderungen:	400V / 3 x 16A

LED BELEUCHTUNG

LED Ambient Light:	-
LED Wasserlinie:	inklusive
LED Wasserfontainen:	-
Wasserfall:	Wave Design
LED Haltegriff:	-
LED Corner Light:	inklusive
LED Unterwasserscheinwerfer:	inklusive

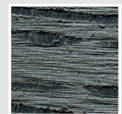
OPTIONAL

- Waterwave Select Cabinet
- Waterwave Sound System
- WiFi Control System
- Waterwave Clear Saltsystem
- Vorbereitung externer Zugang (Bsp. Luft/Wärmepumpe)

*Verfügbar ab Juni/Juli 2021 - Siehe Lagerliste

PREMIUM VERKLEIDUNG

Wave Select
Verkleidung



Dark Grey

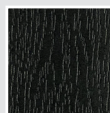


Moccha

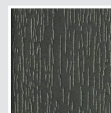


Light Oak

VERKLEIDUNGSFARBEN



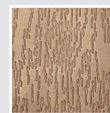
Black



Dark Grey



Light Grey



Dark Brown

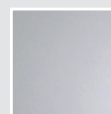
WANNENFARBEN



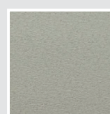
Pure White



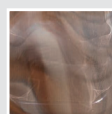
Silver Marble



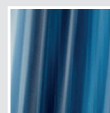
White Pearl



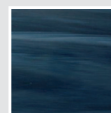
Gypsum



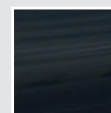
Mediterr. Sunset



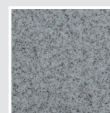
Ocean Wave



Summer Sapphire



Midnight Opal



Sahara