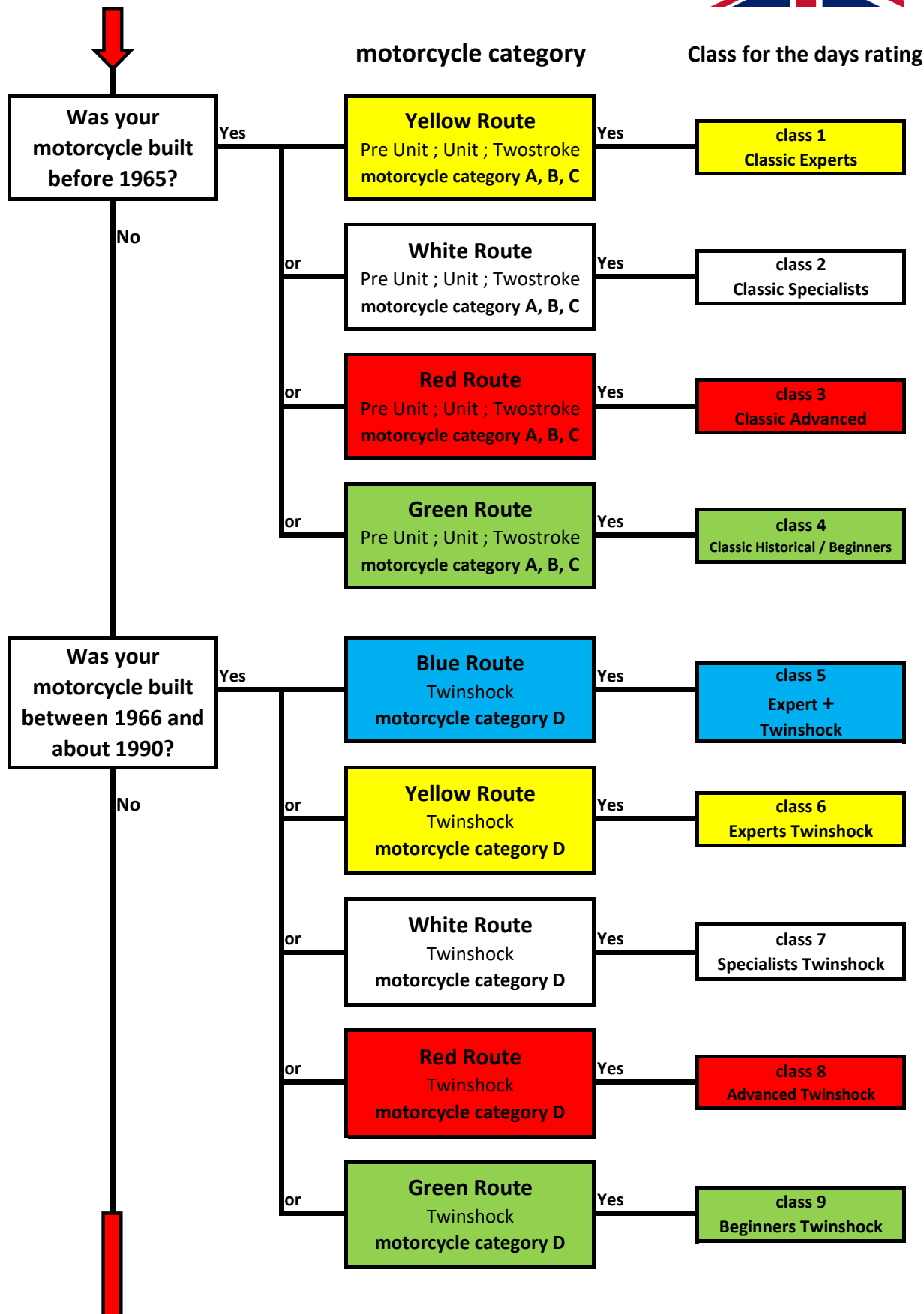
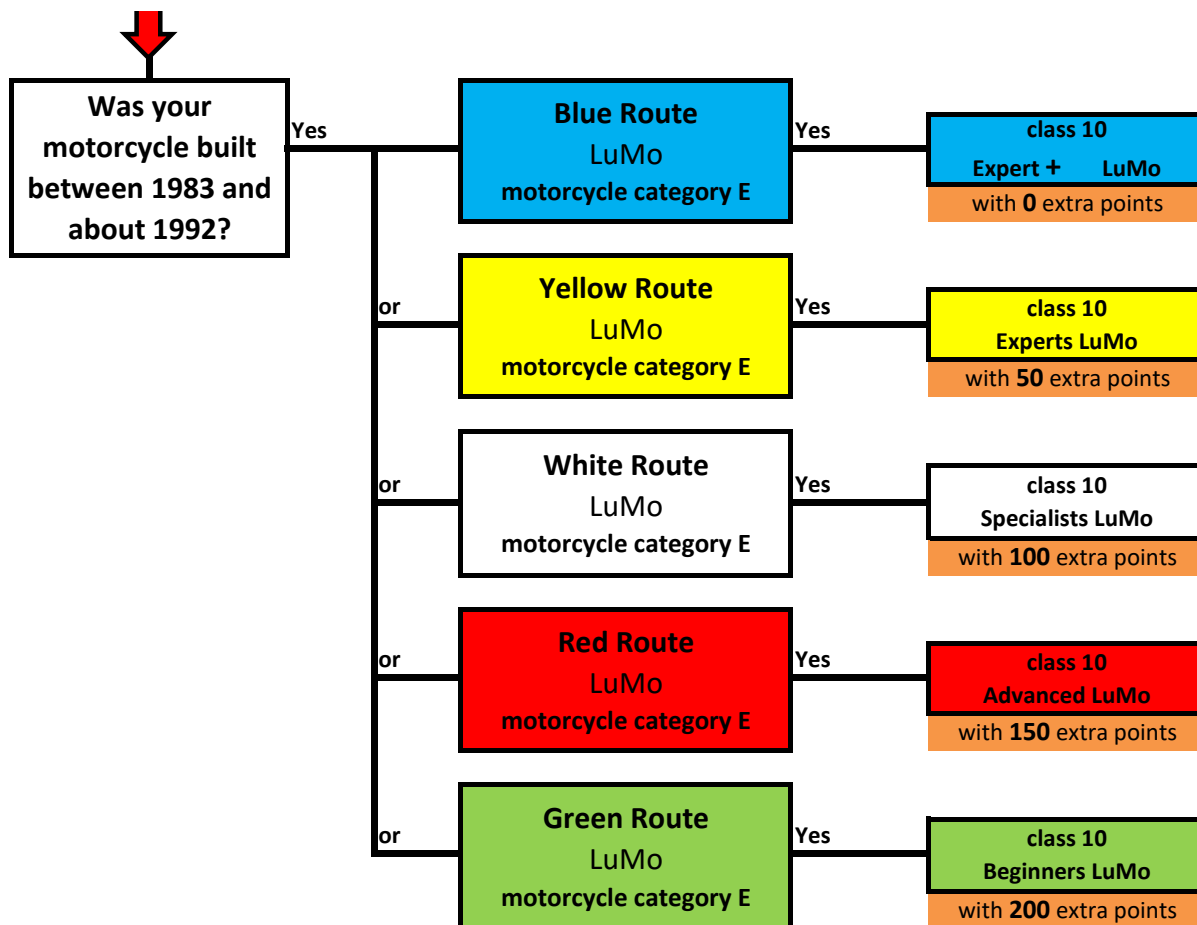


In which class do I register?





Deutsche Trialsport-Gemeinschaft e. V.
Sitz Uelzen



Excerpt from the event conditions of the DTSG

4.4 Definitions of motorcycles



four-stroke pre unit motorcycle category A

On four-stroke pre unit motorcycles, the engine and the transmission are two separate units and have their own oil filling.

four-stroke unit motorcycle category B

On four-stroke motorcycles, the engine and the transmission form a single unit. The oil filling for engine and gearbox can be separate or in one.

two-stroke motorcycle category C

All motorcycles with two-stroke engines built up to and including year of manufacture 1965.

Twinshocker motorcycle category D

Twinshocker are all motorcycles built in 1966 or later with one shockabsorber on the left and one on the right side of the rear wheel. (See construction regulations)
The motorcycle can have a two- or four-stroke engine.

LuMo's motorcycle category E

LuMo's are all motorcycles built from 1983 onwards with an air-cooled engine and a mono shock absorber for rear suspension.
The motorcycle can have a two or four stroke engine.

Rigid

Rigid are motorcycles of the classes four-stroke pre unit, four-stroke unit, two-stroke with rigid frame, with out rear wheel suspension.
Depending on the engine, the motorcycles of this class are included in the evaluation in the respective category four-stroke pre unit, two-stroke and four-stroke unit unit, Two-stroke included.
At the end of the season there will be additional final ranking of the class Rigid.

