

BioMime™ Branch TECHNICAL SPECIFICATIONS

STENT

Stent Material	: Cobalt Chromium L605
Strut Thickness	: 65 µm (0.065mm or 0.0026")
Stent Diameters (mm)	: 2.50-2.50, 3.00-2.50, 3.50-2.50, 3.50-3.00, 4.00-3.50 mm
Stent Lengths (mm)	: 16, 19, 24, 29 mm

DRUG / POLYMER

Drug	: Sirolimus
Equivalent Drug Dose	: 1.25 µg / mm ²
Polymer	: Biodegradable and Biocompatible (PLGA and PLLA)

DELIVERY SYSTEM

Delivery System	: Rapid Exchange
Balloon Type	: Step Balloon
Nominal Pressure	: 9 atm
Rated Burst Pressure	: 16 atm
Balloon Overhang	: ≤ 0.5 mm
Radiopaque Markers	: 4 - Platinum / Iridium
Usable Catheter Length	: 142 cm
Guide Catheter Compatibility	: 5F (Min. I. D. 0.056"/1.42 mm)
Max. Guidewire	: 0.014" (0.36 mm)

BioMime™ Branch ORDERING INFORMATION

Diameter Main Branch - Side Branch	Stent Length			
	16 mm	19 mm	24 mm	29 mm
2.50 - 2.50 mm	BBR25025016	BBR25025019	BBR25025024	BBR25025029
3.00 - 2.50 mm	BBR30025016	BBR30025019	BBR30025024	BBR30025029
3.50 - 2.50 mm	BBR35025016	BBR35025019	BBR35025024	BBR35025029
3.50 - 3.00 mm	BBR35030016	BBR35030019	BBR35030024	BBR35030029
4.00 - 3.50 mm	BBR40035016	BBR40035019	BBR40035024	BBR40035029

Meril

More to Life

Manufacturer:

Meril Life Sciences Pvt. Ltd.
Survey No. 135/139, Bilakhia House,
Muktanand Marg, Chala, Vapi - 396 191.
Gujarat, India.
T +91 260 240 8000

Subsidiary companies:

Meril Life Sciences Pvt. Ltd.
301, A-Wing, Business Square,
Chakala, Andheri Kurla Road,
Andheri East, Mumbai 400 093
T +91 22 39350700
F +91 22 39350777

Meril, Inc.

2436 Emrick Boulevard,
Bethlehem, PA 18020
T +610 500 2080
F +610 317 1672

Meril South America

Doc Med LTDA
Al. dos Tupiniquins,
1079 - Cep: 04077-003 - Moema.
Sao Paulo, Brazil.
T +55 11 3624 5935
F +55 11 3624 5936

Meril GmbH.

Bornheimer Strasse 135-137,
D-53119 Bonn,
Germany.
T +49 228 7100 4000
F +49 228 7100 4001

Meril Tibbi Cihazlar

Meril Tibbi Cihazlar İmalat ve Ticaret A.Ş.
İçerenköy Mah. Çetinkaya Sok.
Prestij Plaza No:28
Kat:4 Ataşehir, 34752
İstanbul / Turkey
T +90 216 641 44 24
F +90 216 641 44 25

Meril China Co. Ltd.

2301b,23f, Lixin Plaza,
no 90, South Hubin Road,
Xiamen, China
T 0086-592-5368505
F 0086-592-5368519

Meril SA Pty. Ltd.

102, 104, S101 and S102,
Boulevard West Office Park,
142 Western Service Road,
Erf 813 Woodmead Extension 17
Sandton, Johannesburg – 2191
South Africa
T +27 11 465-2049
F +27 86 471 7941

Meril Medical LLC.

Nauchnyi Proezd 19,
Moscow, Russia – 117 246.
Office - +7 495 772 7643

EU representative.

Obelis S.A.
Bd. General Wahis 53,
1030, Brussels, Belgium.
T +32 2 732 5954
F +32 2 732 6003
E mail@obelis.net

E askinfo@merillife.com
W www.merillife.com

CE
1783

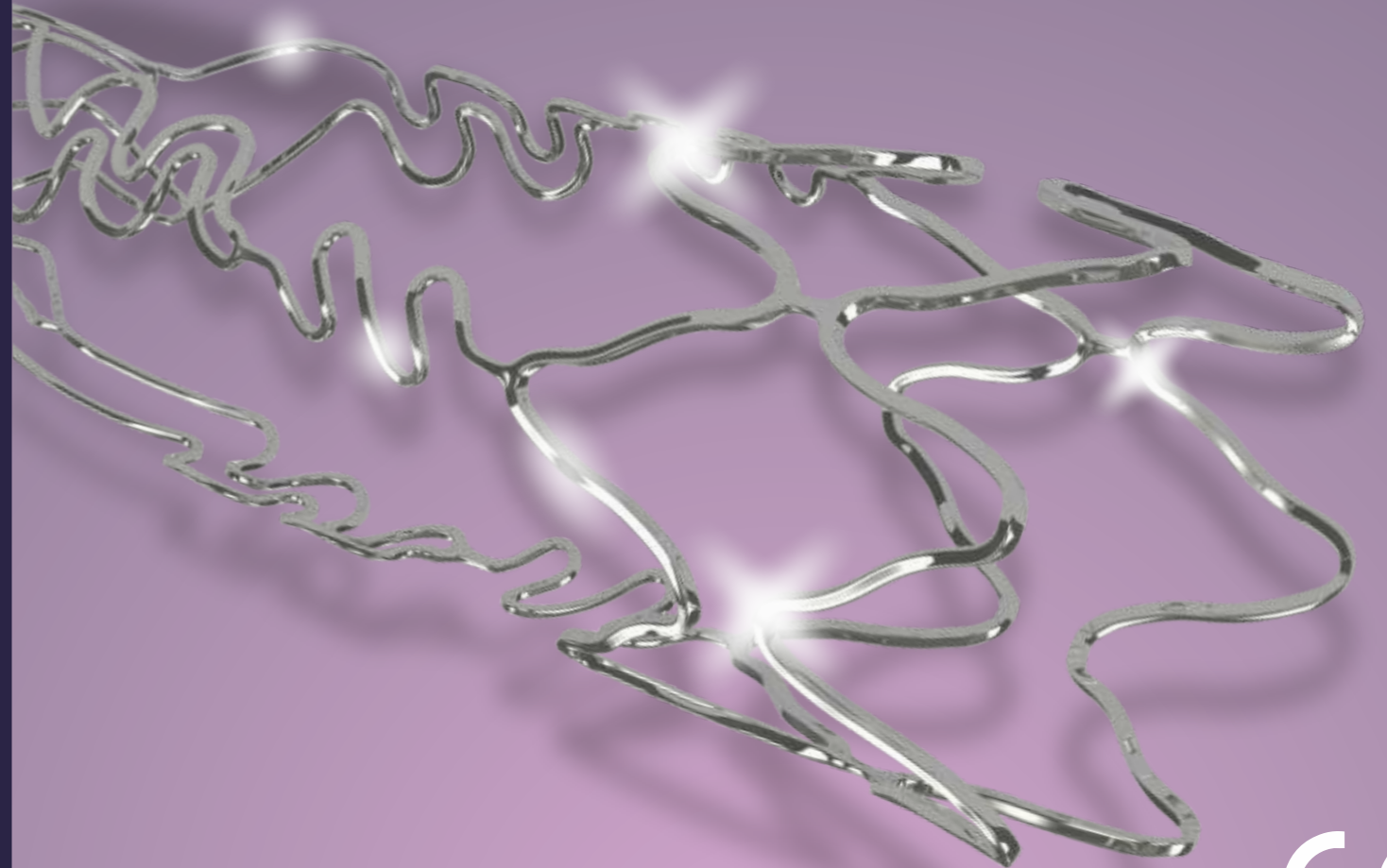
Disclaimer :BioMime™ Branch length of 29mm is not CE approved

Meril

Intuitive Solution for Bifurcations

biomime™ branch
Sirolimus Eluting Coronary Side Branch Stent System

For the use of a Registered Medical Practitioner of Hospital or Laboratory only



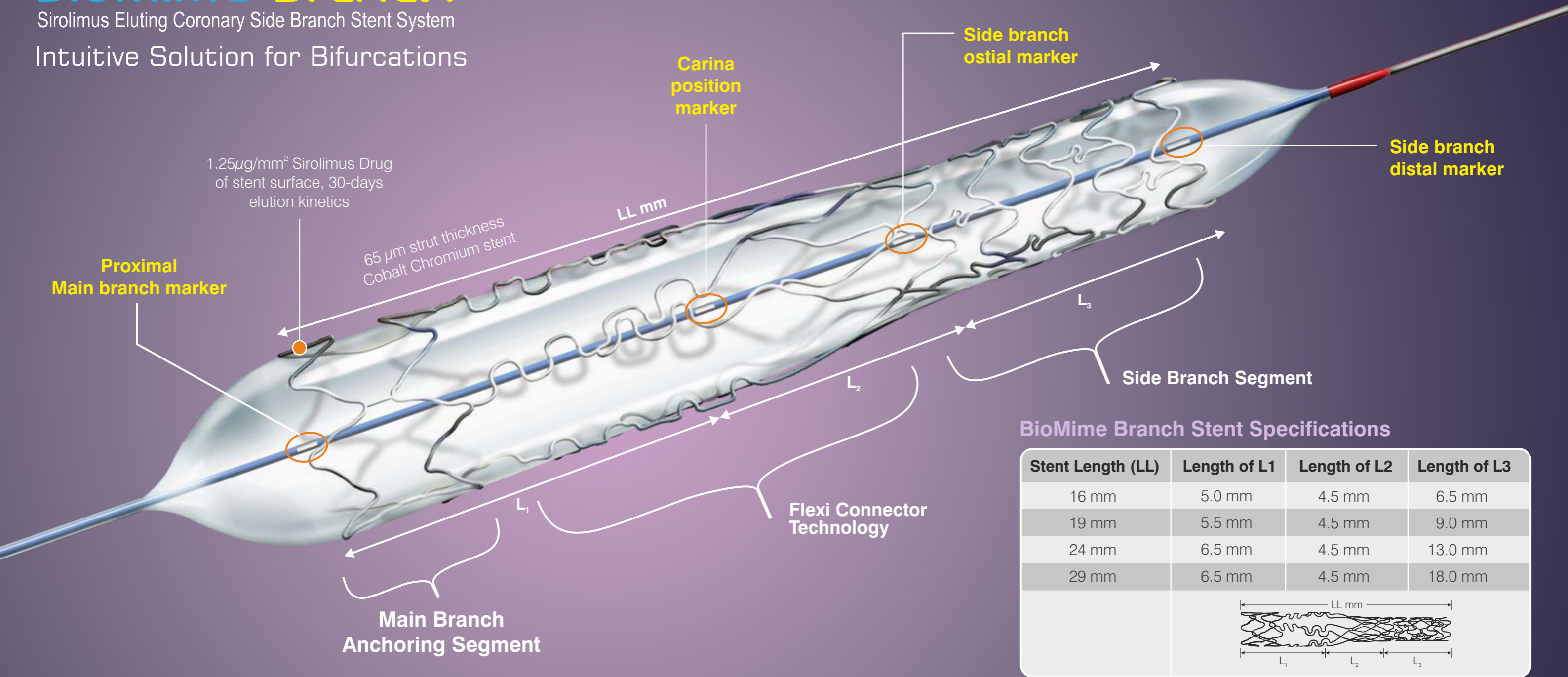
CE

BBR/BROCHURE/005/MLS/2020/0907/GLOBAL

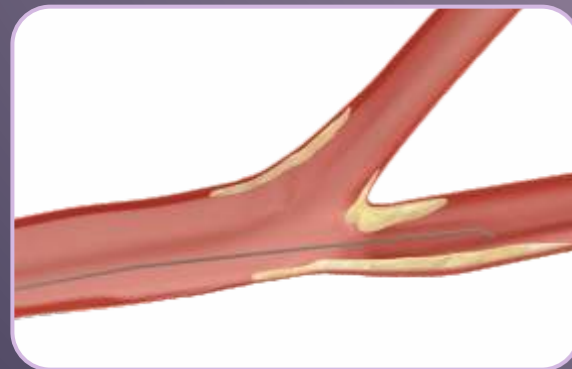
biomime™ branch

Sirolimus Eluting Coronary Side Branch Stent System

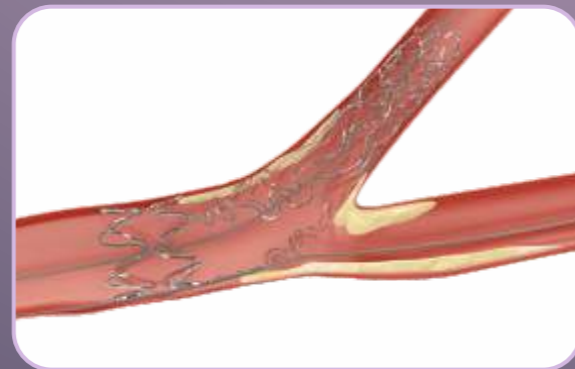
Intuitive Solution for Bifurcations



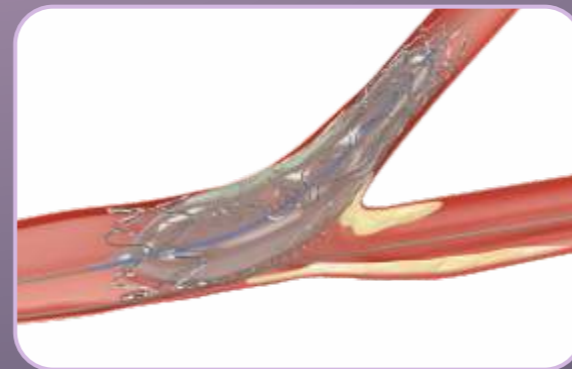
BioMime Branch Deployment Technique



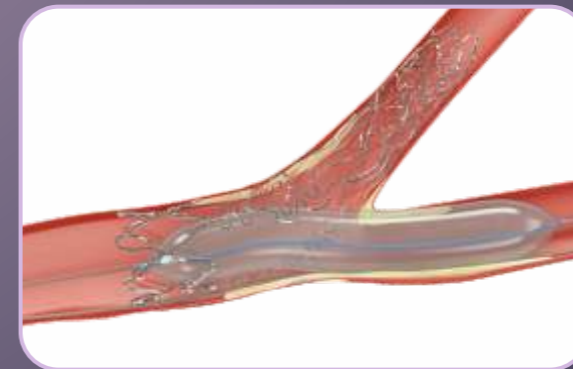
STEP 1
Prepare and Predilate the side branch lesion



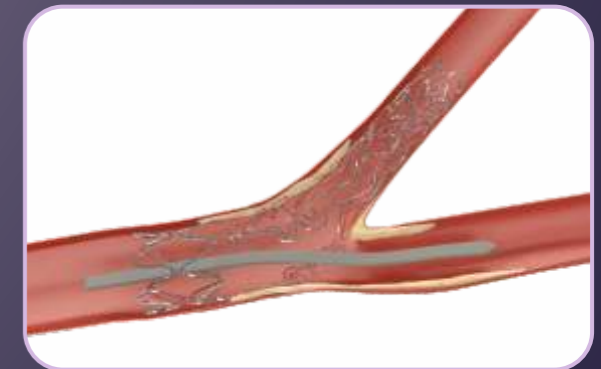
STEP 2
Deployment of BioMime Branch



STEP 3
Post dilation



STEP 4
Prepare the main branch



STEP 5
Deploy stent in main branch and follow up with Kissing Balloon Technique with both main and side branch