



# Yamagata University

## Graduate School of Agricultural Sciences

### ■ Master's degree program

The 2-year research program aims at fostering capabilities for solving problems in international and local communities. The program consists of three majors: Bioproduction Science (Agri-Science), Bioresource Science (Bio-Science) and Bioenvironmental Science (Eco-Science) which are all designed to equip the students with in-depth knowledge on the field of each major as well as the broad vision integrated with the other majors. This program has the following advantages:

- [1] **Under the single department, the students can learn a wide range of subjects** from highly trained professionals and also actively participate in a number of activities.
- [2] **Each student can get advises for his/her research work and course registration from three professors** (one main and two sub supervisors).
- [3] Since dozens of lectures and seminars are offered in English, **students who cannot communicate in Japanese can get the master's degree.**
- [4] **We have a double-degree program with Leibniz Universität Hannover in Germany.**

The students, who meet the requirements such as English proficiency, can enroll this program to receive two master degrees from both universities.



Students will learn techniques and theories for producing safe, sustainable and stable agricultural and livestock products. Also, students will learn how to effectively manage limited resources (material and human resources).



Students will learn basics and applications of broad range of topics in Bioscience, including discovery, improvement and utilization of biological functions of plants, microbes, and higher animals.



Students will learn theories in relation to the functions and mechanisms of natural environment and ecosystems, which serve as the basis of agriculture and forestry, as well as techniques for preserving them in a sustainable way.

- English website of Graduate School of Agricultural Sciences  
<https://www.tr.yamagata-u.ac.jp/en/index.html>



- Student handbook for master's degree program (written in both English and Japanese)  
<https://www.tr.yamagata-u.ac.jp/en/doc/2022/student-handbook2022.pdf>



- Syllabus for master's degree program (written in English)  
<https://www.tr.yamagata-u.ac.jp/en/doc/2022/2022Syllabus.pdf>



### ■ Doctoral program

Yamagata University is a member of the United Graduate School of Agricultural Sciences which facilitates the doctoral program, together with Hirosaki and Iwate Universities. **You can study in the curriculum offered by a larger number of professors with a wider range of specialties, than in bachelor's and master's degree programs, from three member universities.** All information on this 3-year program is available at the following website:

- English website of the United Graduate School of Agricultural Sciences (managed by Iwate Univ.)  
<https://ugas.agr.iwate-u.ac.jp/en/>



# Information of entrance examinations

## 【Master's degree program】

Subjects examined	Written examination on a specialized subject and oral examination
Application documents	Admission application form, examination admission card and photo card, examination fee, academic transcript, certificate of graduation or completion (expected), an envelope to send the examination admission card, etc., addressee card (label, mail sticker), copy of the resident register or passport, result of TOEIC or TOEFL

Procedure	Date	
	1st application	2nd application
Acceptance of applications	Beginning of June	Beginning of November
Entrance examination	Mid-July	Mid-December
Notification of examination result	End of July	End of December

※You may take recommendation-based entrance examination for international students. Please consult with the potential supervisor if you wish to apply it.

[https://www.tr.yamagata-u.ac.jp/pdf/2023/daigakuin\\_bosyuyoko\\_r6-e.pdf](https://www.tr.yamagata-u.ac.jp/pdf/2023/daigakuin_bosyuyoko_r6-e.pdf)

[https://www.tr.yamagata-u.ac.jp/pdf/2023/daigakuin\\_application\\_r6-e.pdf](https://www.tr.yamagata-u.ac.jp/pdf/2023/daigakuin_application_r6-e.pdf)



## 【Doctoral program】

General entrance examination, working student entrance examination and dual Ph.D. program entrance examination\*

Procedure	Date	
	1st Application	2nd Application
Application period	Beginning of July	Mid-November
Entrance examination	End of August	Beginning of February
Announcement of application results	Beginning of September	Beginning of February

Note: Dual Ph.D. program entrance examination will not be held in Autumn of 2023.

### Pre-arrival entrance examination

Procedure	Date
Application period	Mid-October
Entrance examination	Will be announced after receiving the documents
Notification of application results	Beginning of December

### Examinations methods and components of evaluation

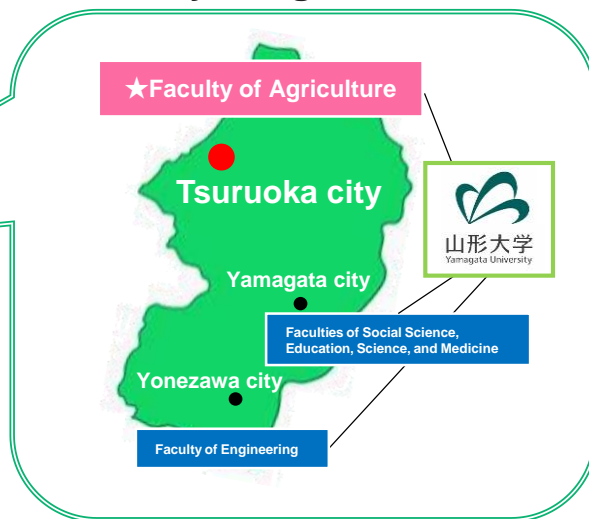
	Knowledge, skills, and understanding	Ability to think, make judgements, and express oneself	Interest and willingness	Independence and cooperative attitude
Oral examination	✓	✓	✓	✓
Application documents	✓		✓	

See the Iwate University website for the admission policies of each major in UGAS.

<https://ugas.agr.iwate-u.ac.jp/en/for-prospective-students/admission-requirements-procedures%e3%80%80/>



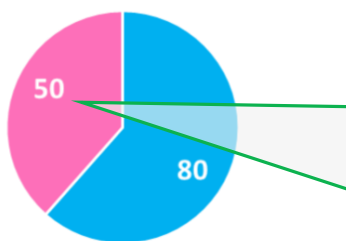
## ■ Locations of Yamagata University and Faculty of Agriculture



## ■ International exchange in Faculty of Agriculture

### Percentage of international students

Graduate students



■ Japanese students ■ International students

### Where they come from :



(As of September 1, 2023)

## ■ Life in Tsuruoka, Japan

### Reasonable cost for your study, compared to Tokyo and other big cities

#### 【University tuition and other fees】

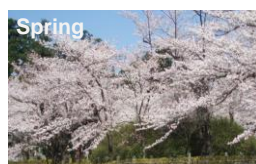
- Application fee: 17,000~30,000 JPY
- Enrollment fee: 282,000 JPY
- Tuition fee: 535,800 JPY/year

#### 【Monthly cost for living in Tsuruoka】

- House rent (one-room apartment): 30,000 JPY~  
You have the options to select the dormitory and share the room with other students to save the living cost.
- Utility charge: 14,000 JPY~
- Food expenses: 30,000 JPY~

※1,000 JPY= 7USD (As of September 1, 2023)

### Beautiful nature in four seasons



○ More information about Tsuruoka city  
<https://www.tsuruokagastronomy.com/>



### Warm supports for int'l students

- A Japanese student for each of you is allocated as your tutor to help your communication on/off campus.
- We have a program to help international students find jobs in Yamagata Prefecture. ...and more

### Please feel free to contact us!

International Office, Academic & Student Service,  
Faculty of Agriculture, Yamagata University

✉ Email: [yu-nogaku-ryug@jm.kj.yamagata-u.ac.jp](mailto:yu-nogaku-ryug@jm.kj.yamagata-u.ac.jp)

# Topics of our research

## Forest research using drone technology and machine learning models



**KEYWORD** Forest, Unmanned aerial vehicle, Machine learning model



### Research Outline

My laboratory uses a variety of methods to research about nutrition, carbon and water cycles in forests, including field observations and sampling, long-term automated data collection, and stable isotope analysis (N, C and O).

In recent years, the use of Unmanned Aerial Vehicles (UAVs) has made it possible to observe trees and forests in greater detail, narrowing the gap between fieldwork and satellite image results. UAV images, which have a very high resolution, can be used for



**Maximo Larry Lopez Caceres**  
Professor

Specialty : Watershed conservation  
E-mail : larry@tds1.tr.yamagata-u.ac.jp



ass forest ecosystems with  
be used for both tree-by-  
species classification,  
s well as mixed forest

cientists to implement  
g it to orthomosaics  
be collected at a high

## Assessment of health risks posed by contamination of water and food



**KEYWORD** Food safety, Environmental pollution, Human health risk

### Research Outline

Through the past events of food poisoning, environmental contamination by radioactive materials, and the pandemic of COVID-19, public attentions has been paid to the safety and security of water, food, and the living environment. Such events taught us that health risk in our daily lives is NOT zero and we should accept a low level of risk from water, food and the environment.



**WATANABE, Toru**  
Professor

Specialty : Water Environment Engineering,  
Environmental Risk Assessment  
E-mail : to-ru@tds1.tr.yamagata-u.ac.jp

**Biohazard Testing Facility** Risk of infection due to norovirus contamination of oysters

Example research: Risk of infection due to norovirus contamination of oysters

Above : By detecting viruses from oysters using high-precision analytical techniques, the risk of gastroenteritis can be calculated. Left : A method for selecting oysters that are less likely to be contaminated with norovirus is currently under development.

I have a special laboratory capable of handling pathogenic microorganisms. I'm also challenge with the detection of novel coronaviruses in the environment, such as sewage, and the assessment of the risk of infection.

I can also detect heavy metals and other toxic substances in water and food. Please consult with us.

We are developing technologies to analyze contaminants as health hazards in such media and to assess health risk based on the analytical data. We are also studying on measures to reduce the risk (e.g. modifying cultivation method, improving process of manufacture, and introducing purification technologies).

The topics of research in Faculty of Agriculture, Yamagata University are introduced at the following website:

### ○Topics of research in Faculty of Agriculture Yamagata University

[https://yamagatauniversity-my.sharepoint.com/:b:/g/personal/gxn174\\_jm\\_kj\\_yamagata-u\\_ac\\_jp/Ef\\_cI7H8SO5FsXu-5q-xENsBP5cbrPv9rqqa4wGbgolR?e=bolsIU](https://yamagatauniversity-my.sharepoint.com/:b:/g/personal/gxn174_jm_kj_yamagata-u_ac_jp/Ef_cI7H8SO5FsXu-5q-xENsBP5cbrPv9rqqa4wGbgolR?e=bolsIU)



You can find faculties who are willing to accept international students.

If you find a faculty who has a topic of your interest, please feel free to contact him/her directly.

# Guidebook for international students

The guidebook for international students in Yamagata University are available at the following website:

### ○Yamagata University International student guide

[yamagata-u.ac.jp/jp/files/3916/8015/1277/2023.pdf](http://yamagata-u.ac.jp/jp/files/3916/8015/1277/2023.pdf)



- entrance examinations for all faculties of Yamagata University,
- living in Yamagata,
- employment support, and so on.

## Enjoyable events on/off campus

## Cultural exchanges

between international and Japanese students, involving the local community.



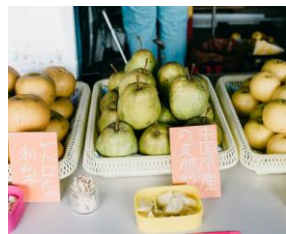
## Summer /Winter school programs

Short-term programs at partner universities in Germany, Vietnam, Thailand, etc.



## Harvest festival of Yamagata University farm

We have a harvest festival in autumn every year at our research farm. The crops (rice, vegetables, etc.) harvested on the farm are served for those who join the festival.



## Hanagasa festival (A traditional festival in Yamagata)

Yamagata University students can participate in the parade with traditional dance, holding a straw hat "Hanagasa" decorated with flowers.

