

Projekt ID 301

Wohnfläche: 193m<sup>2</sup>





# Haus Fischach





## ECKDATEN

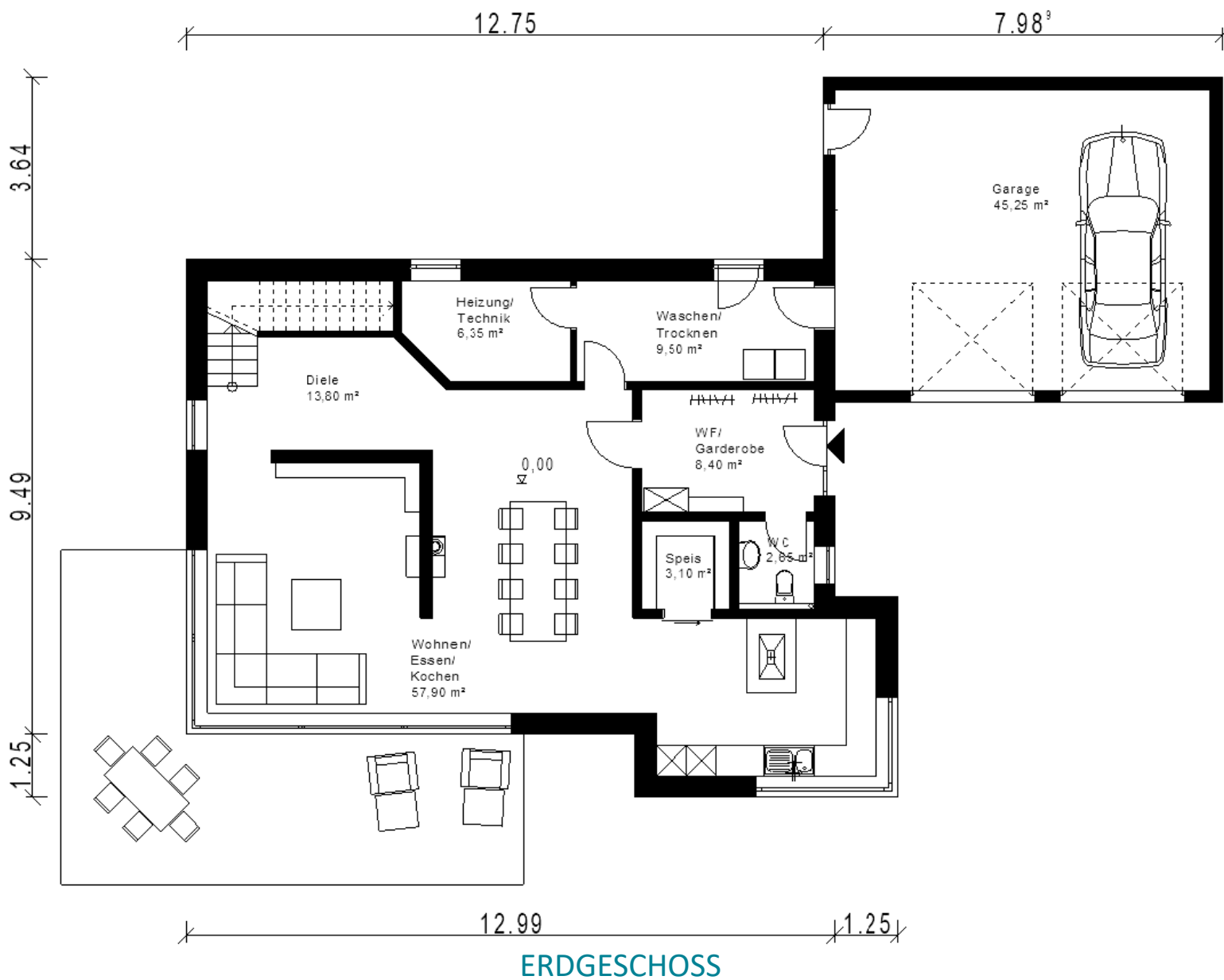
Wohnfläche 193m<sup>2</sup>

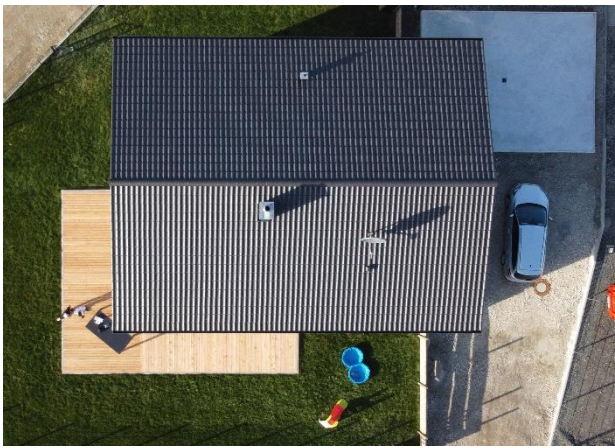
Nutzfläche 45m<sup>2</sup>

Satteldach 15 Grad

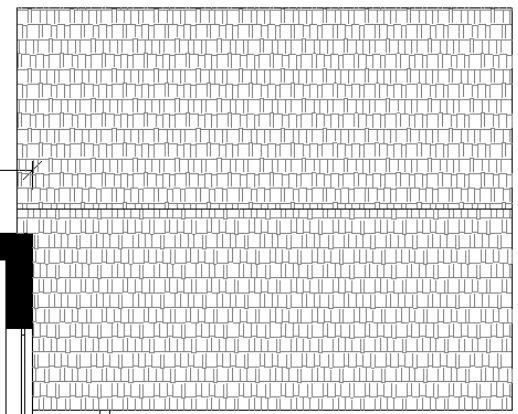
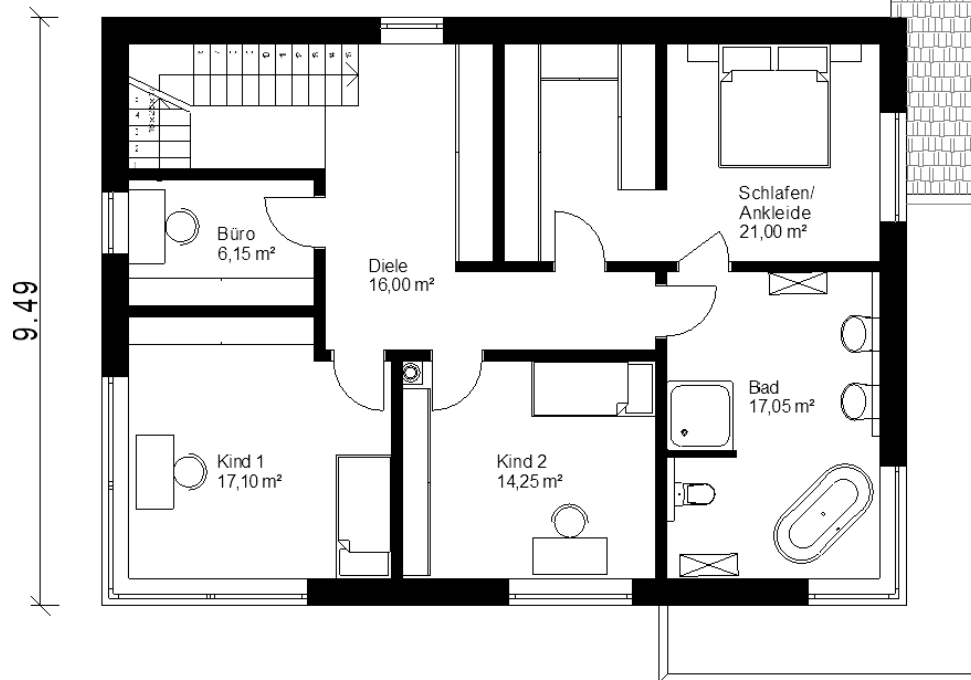


# Haus Fischach





12.99

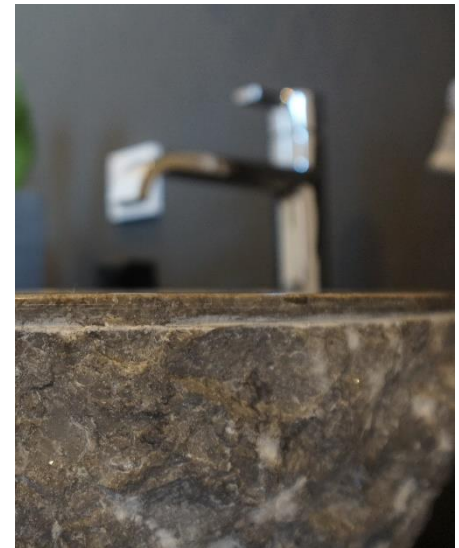
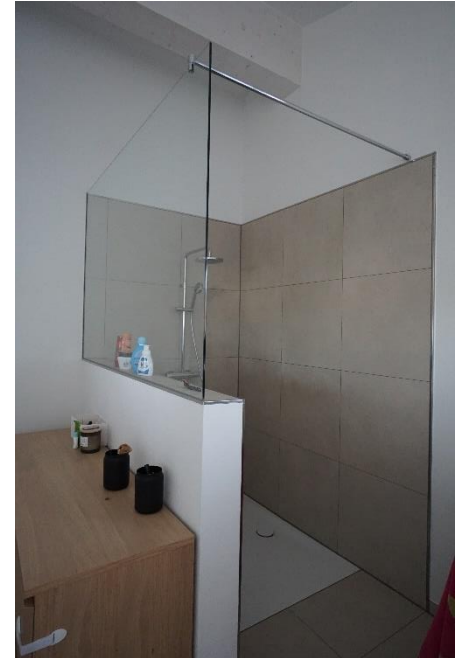


**OBERGESCHOSS**

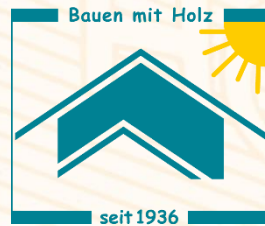


# Haus Fischach









**AUGSBURGER  
HOLZHAUS** GmbH

Augsburger Holzhaus GmbH  
Gersthofer Straße 9  
D-86368 Gersthofen-Hirblingen  
Telefon 08 21 252 76 0  
Fax 08 21 252 76 20  
info@augsburger-holzhaus.de  
[www.augsburger-holzhaus.de](http://www.augsburger-holzhaus.de)