

Our Strategic Aims

We believe that:

- Education is a super power. Children who love to learn are able to use their talents to positively influence a changing world.

We are committed to:

- Putting students and their wellbeing and learning at the centre of everything we do.
- Equity for every learner so that educational opportunities and outcomes are within reach for all children.
- Providing an inclusive learning environment that is culturally responsive and safe.

We aim for all children to:

- Experience educational success and achievement, from a platform of belonging and connection to place and people.
- Have equitable opportunities to access a future-focused, local and culturally relevant curriculum.

We will:

- Value Māori as Tangata Whenua and actively participate in activities related to Te Reo Māori me ōna tikanga (the language and the way of Māori) as outlined in our Māori Achievement Plan.

- Embed the Key Principles of Te Tiriti o Waitangi – protection, partnership, and participation – into the fabric of our school.
- Celebrate the uniqueness of being a small rural school offering two learning pathways.
- Live the school whakataukī (motto): Ko Tahi te Hikoi Whakamua (Forward Together).
- Uphold and honour the key priorities and uniqueness of both learning pathways.
- Value Ngāti Manuhiri (Hapū) and Ngāti Wai (Iwi) as Mana Whenua.

Our Future Graduate Profile

Taha Mātauranga

We aspire for graduates with these skills and knowledge:

- Experience with Digital Technology (how to use, critique and decide when it's appropriate).
- Creative thinking ability.
- Leadership qualities.
- Conversational Te Reo Māori.
- Appreciation of the arts.
- Developed numeracy, literacy, problem solving, presentation and reflection skills through research.

Taha Hinengaro

The thoughts, feelings and behaviour of our graduates reflects these aspirations:

- Adaptability – of thinking.
- Resilience.
- Curiosity – an inquiring mind.
- Honesty and authenticity.
- Confidence, and a feeling of being empowered.
- Great social skills.
- Respect for, and of others.
- Passionate and engaged in learning.
- Belonging – to feel safe.

Taha Tinana

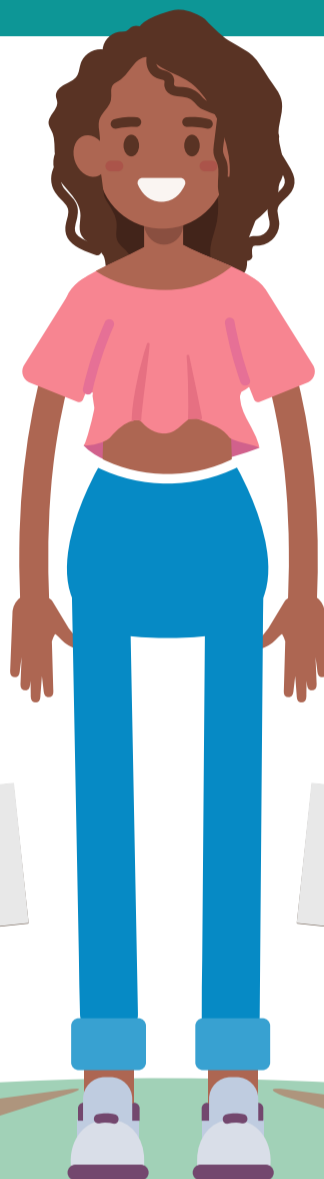
Graduates have physical health, skills and experiences including:

- Practical hands-on skills.
- Freedom to be fit and healthy.
- Kapa Haka opportunities.
- Self-awareness.
- Education outside of the classroom.
- Ecological sensitivity from working with, and for, the land.

Taha Whānau / Whenua

We value relationships with people and the land:

- Relationships with community, peers, parents, and people that care for them.
- Connection to the land, and its local knowledge.
- Connections to college.
- Reciprocal relationships.
- Intergenerational conversation skills.
- Knowledge of whakapapa.



**One School
Personalised Pathways**

Our Values

- Māia** (courage)
- Hiranga** (excellence)
- Whakaute** (respect)
- Kotahitanga** (unity)
- Hauora** (wellbeing)

Mana Whenua
Ngāti Manuhiri
Ngāti Wai

Our Strategic Goals

- Kaitiakitanga – Effective Board Governance
- Rangatiratanga – Enhanced Principal Leadership
- Marau Mātauranga – Effective Teaching & Learning
- Whanaungatanga – Effective Partnerships

PRIME Math Collaborative Learning Authentic Learning Workshops Personalised learning menus Peace Process Freedom & Responsibility Cosmic Education Montessori Materials Presentations

Daily Diaries Practical Skills Whānau Groups Seesaw App Pet Day Art Storytelling Pakiri Press

Student-run Hui Learner Profiles Basketball Tennis Coding Marae Visits Yoga iTIME

Interschool Connections Swimming Presentation Skills Leadership Development Camps

Waiata Transitions Programme NEST Programme Cricket Kapa Haka

Work Journals Reflection Maps Lego Robotics Gardening Going-out Programme

End of Year Production Cooking License Digital License Tree Climbing License Te Reo Māori Personalised Learning

Design Thinking Catch-it Programme Pollinator Project Journalism Wellbeing Hui Trees for Survival Cluster Events

Drama Young Entrepreneurs Weaving