

# MONSTER CLUB



## ARCADE#4

FACING THE CHAMPION



"HE WHO PLAYS BECOMES THE GAME HIMSELF."

THE  
**MONSTER CLUB**  
CORPORATION

# ARCADE

THE MONSTER CLUB CORPORATION

LOAD

SAVE FILES

CARDZ

PINK

<EMPTY>

MENU

ARCADE

NEW GAME

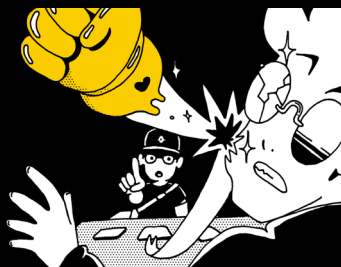
LOAD GAME

ENTER CODE

GAME WAS  
LOADED  
!SUCCESSFUL!



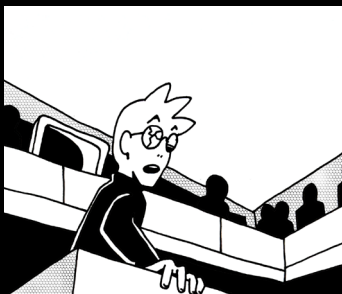
## LAST TIME ON MONSTER CLUB ARCADE



After losing, Dragen caused quite the speculation warning Cardz and the rest of the audience for events happening behind the scenes of it all. But don't have all public places camera systems installed these days, Dragen?



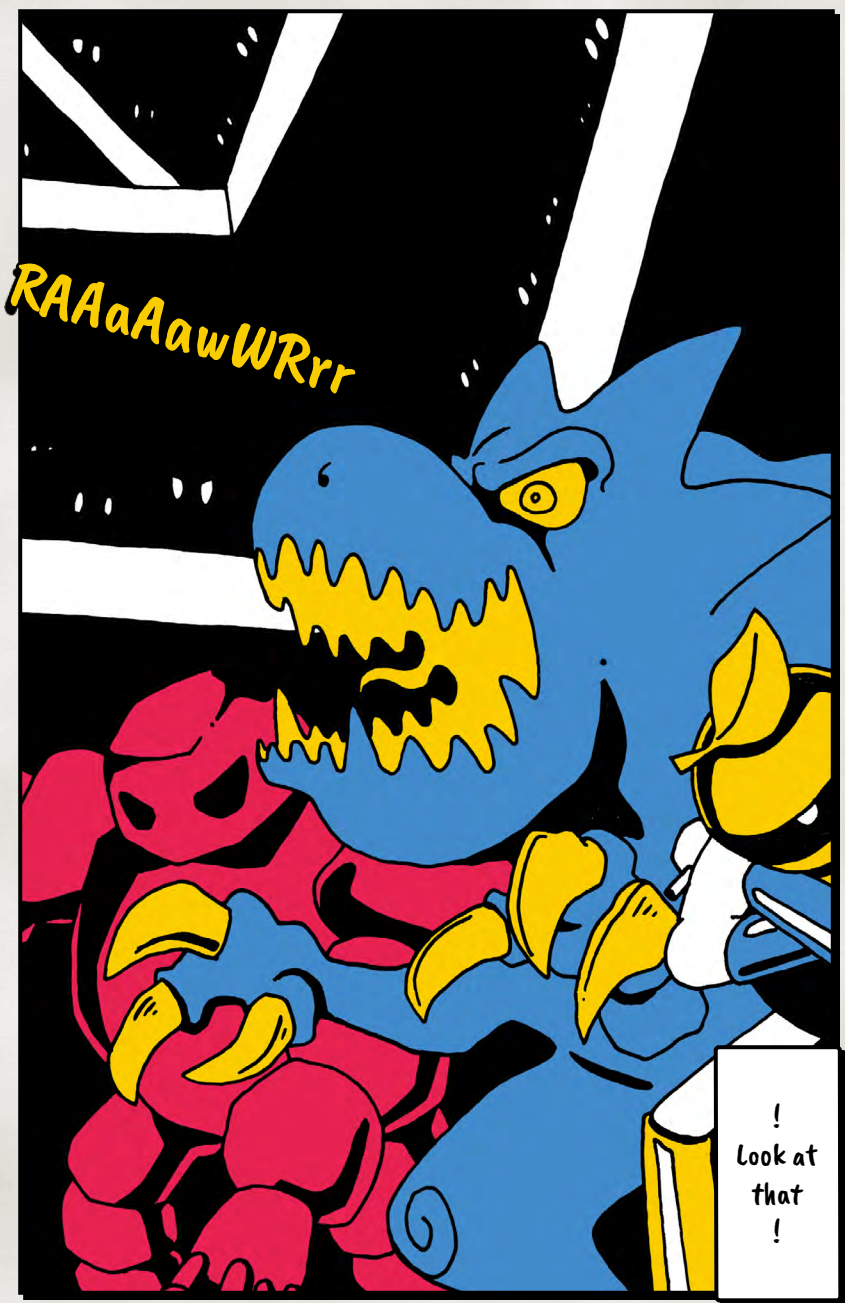
As Cardz competed against Dragen the controversial rules of the tournament became more and more clear. The games outside of the games were not to be taken lightly so it seemed.



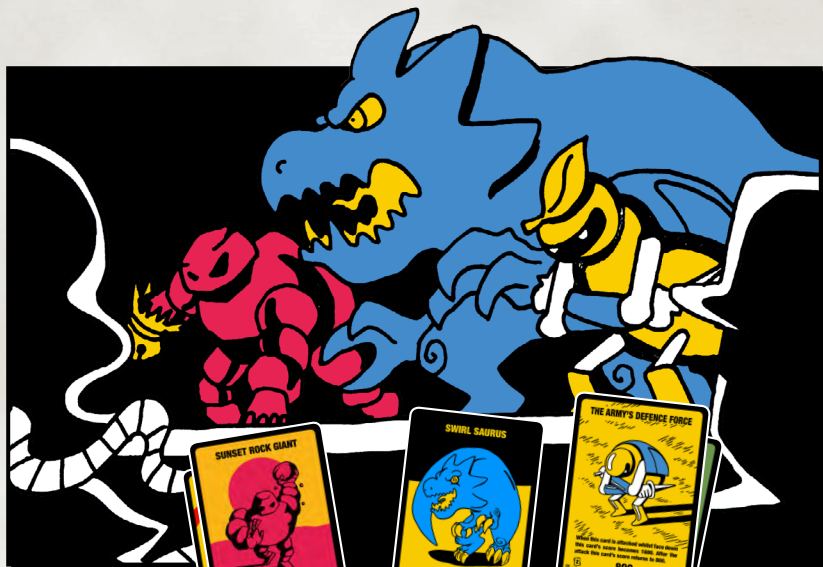
Winning the game against the Australian champion secured Cardz his attendance in the next rounds. However there has been no sign of Anxious her friend who's game is about to begin.

Will Pink make it in time to secure his place in the tournament?

THE STORY CONTINUES NOW...



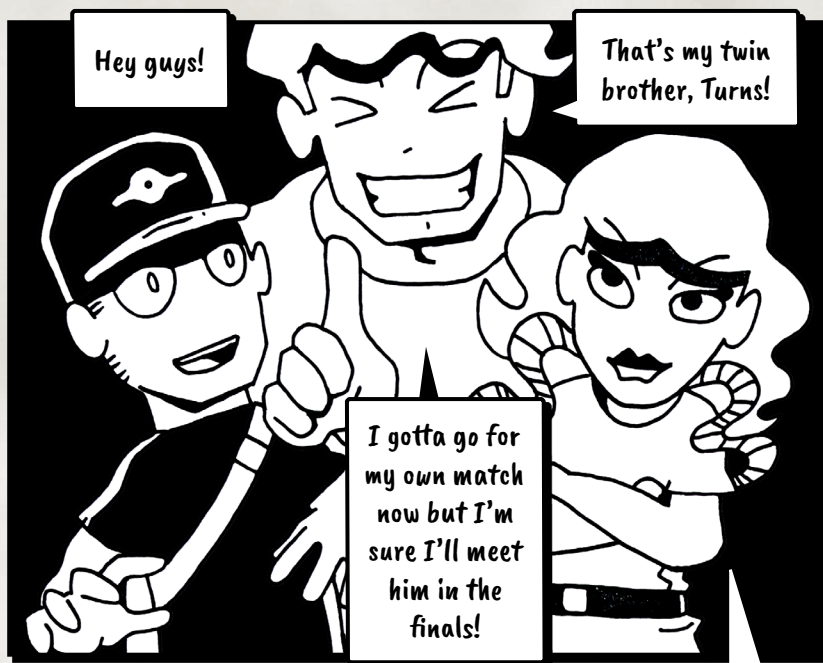




He's got  
some  
pretty  
strong  
monsters  
on the  
board.

Oh come on,  
Cardz...

You should  
know better  
than that!

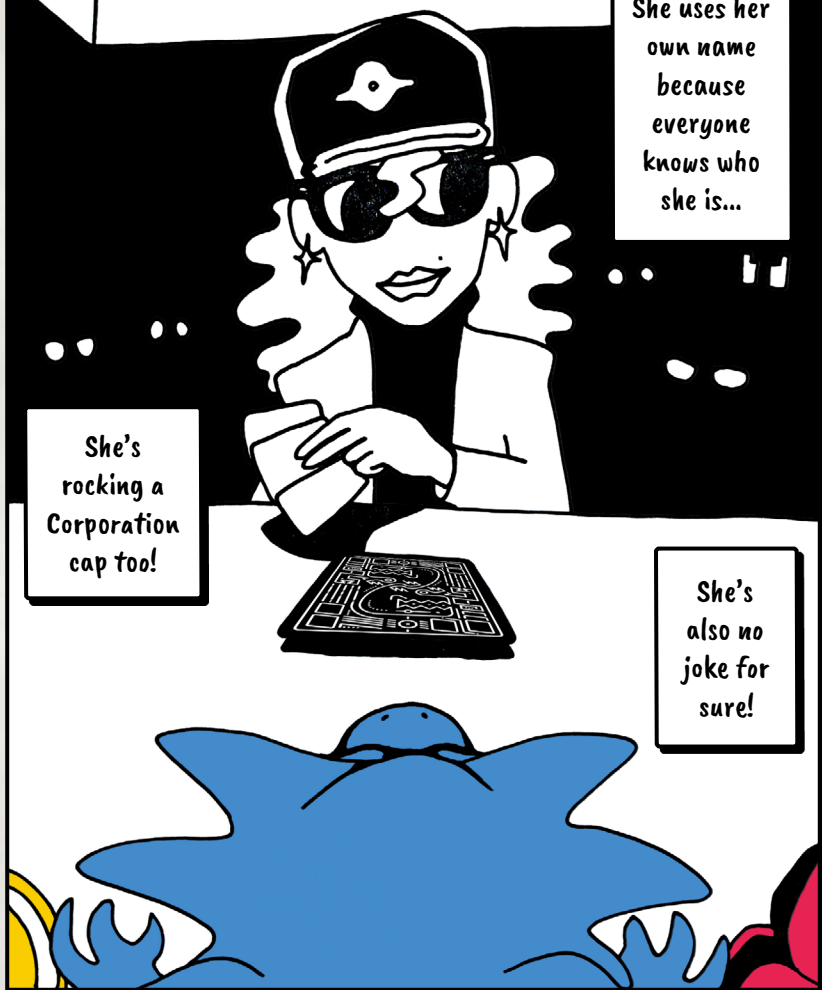


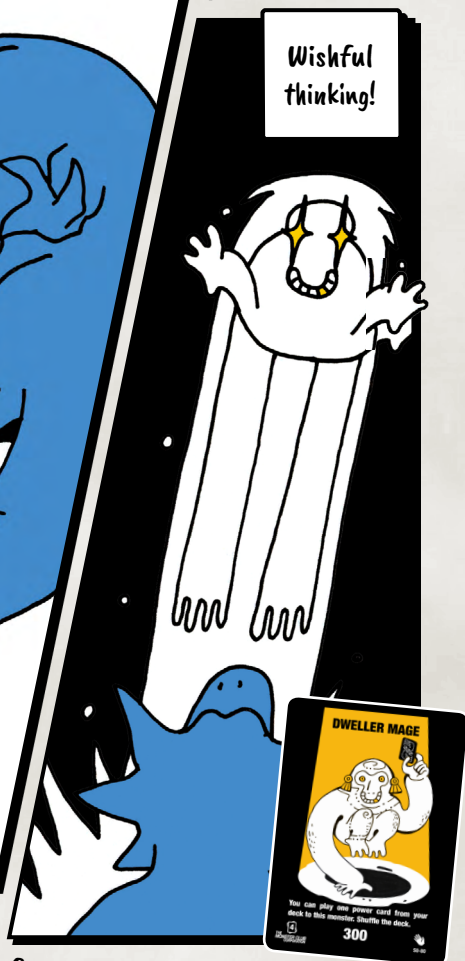
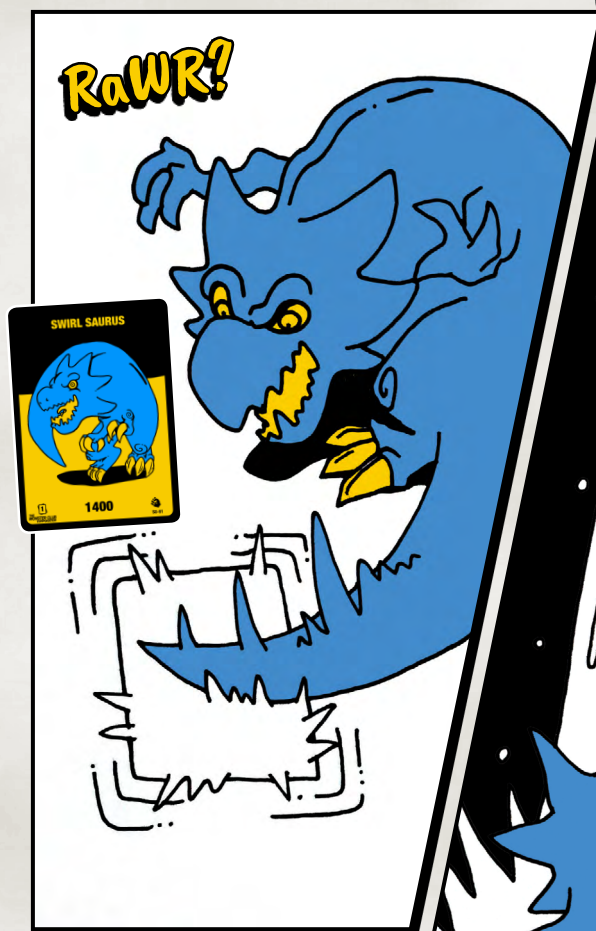
But don't  
forget who  
he is up  
against.

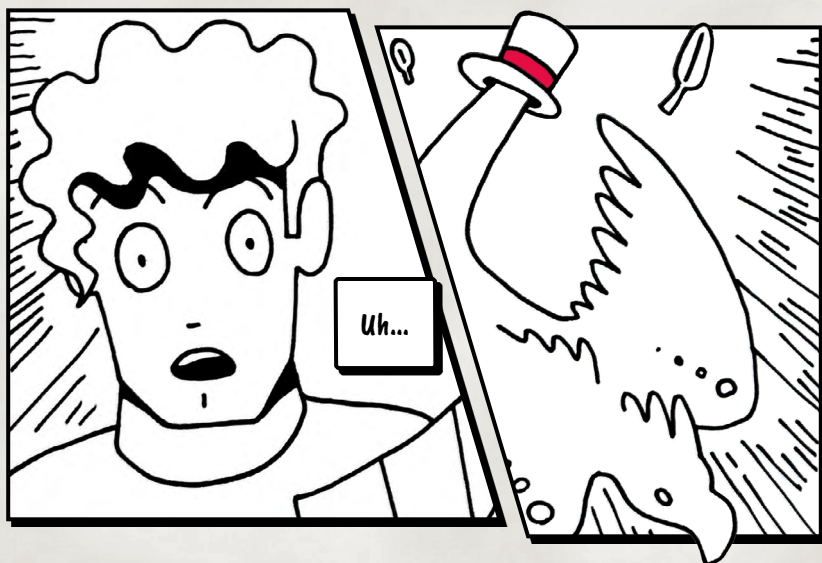
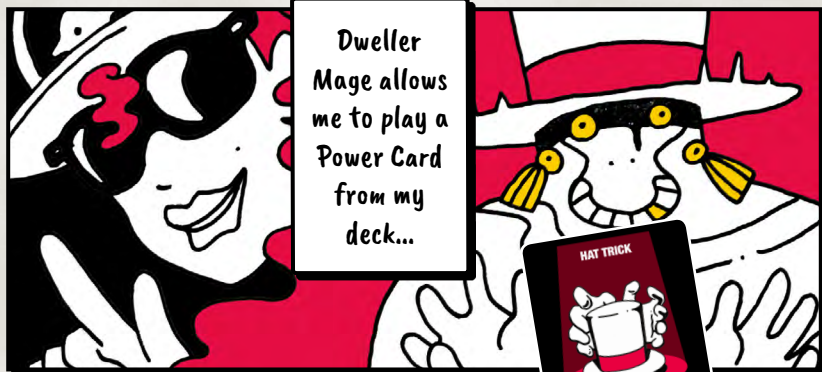
That's  
the world  
champion,  
Janice.  
She uses her  
own name  
because  
everyone  
knows who  
she is...

She's  
rocking a  
Corporation  
cap too!

She's  
also no  
joke for  
sure!











And since it's  
my turn now,  
I destroy  
this Combo  
Dragon...



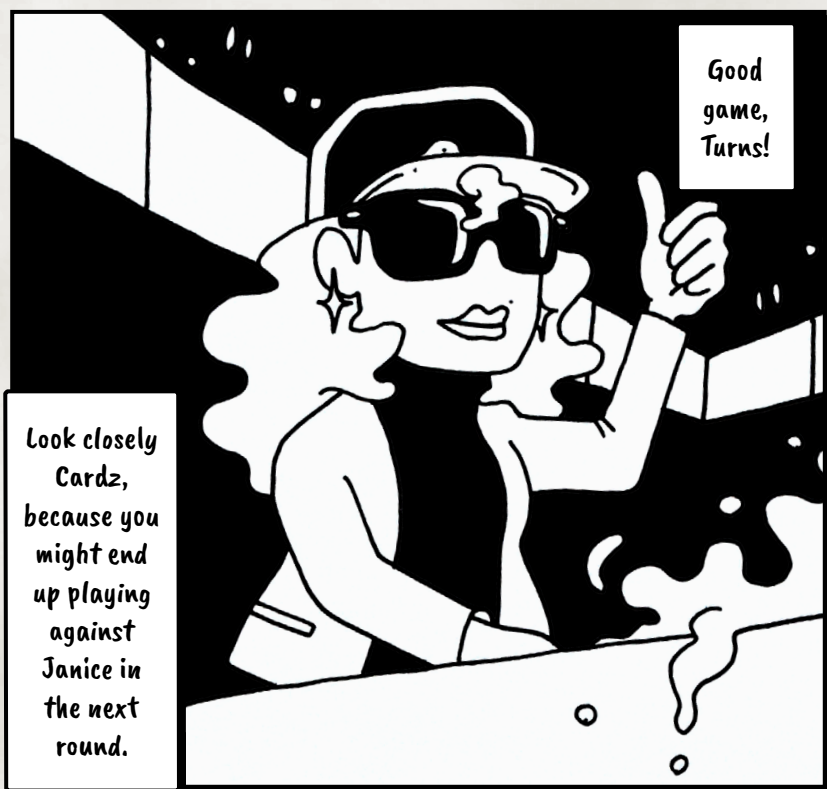
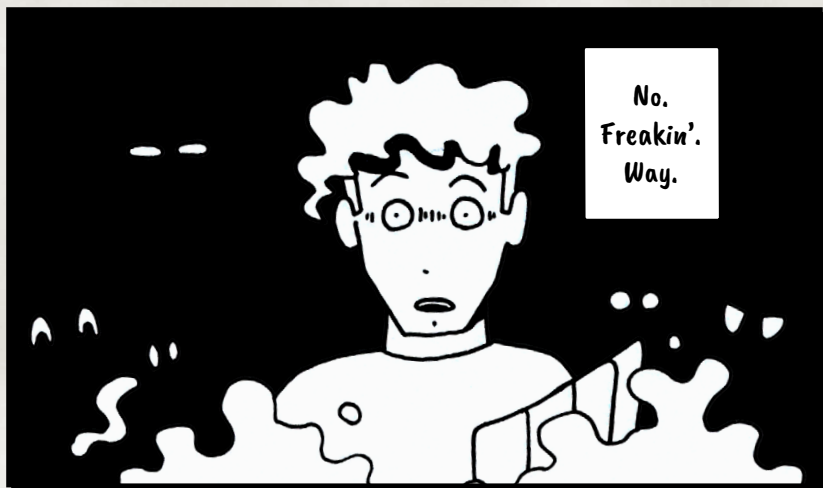
And by  
playing  
Shimmering  
Strike to my  
Guardian...

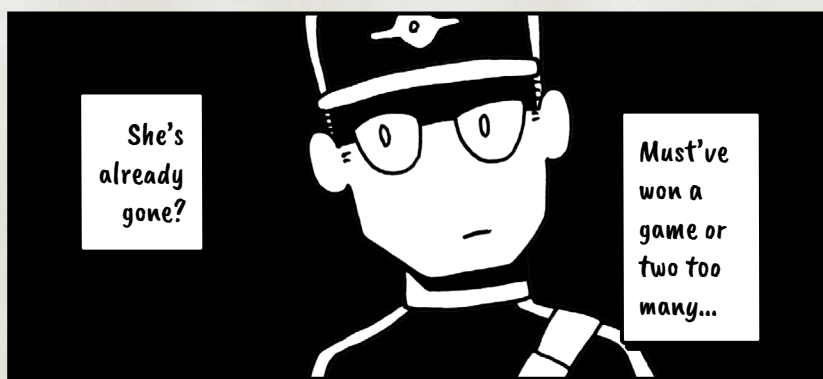


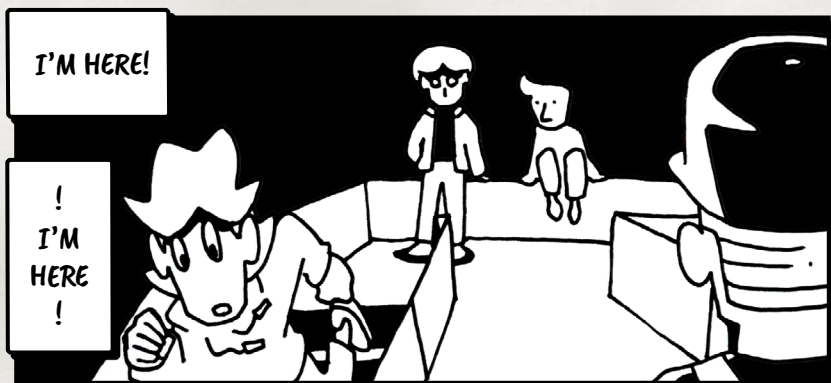
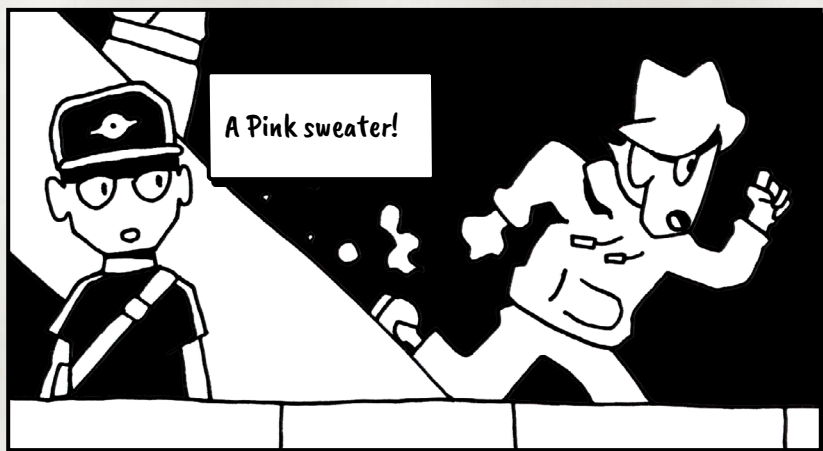
!  
I destroy  
all of your  
remaining  
monsters  
!







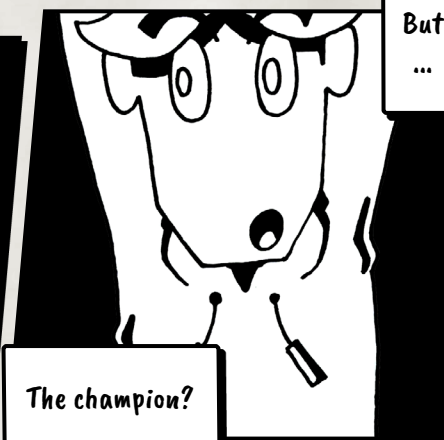








Hi.

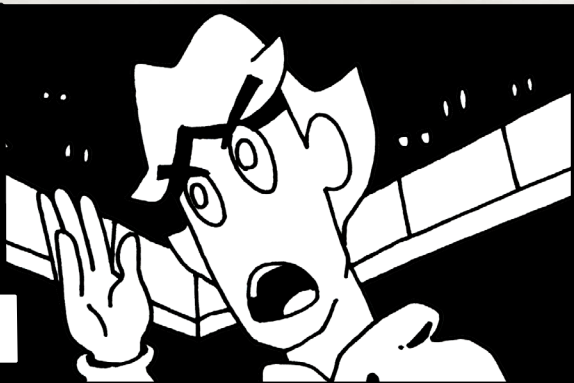


But  
...

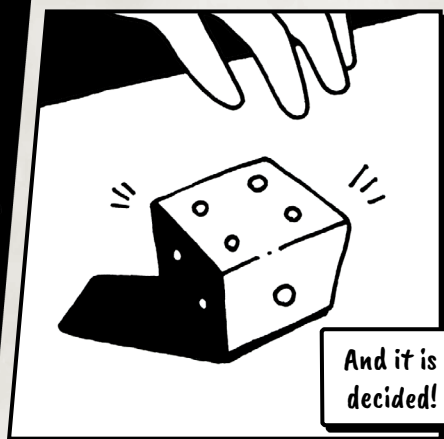
The champion?

You guys are  
making me  
play against  
Janice in the  
preliminary  
rounds?!

That ain't fair!



The games  
were  
chosen  
randomly,  
mr. Pink.



And it is  
decided!

Pink VS. our  
unknowns  
contestant!

I suggest  
ladies first!

Agreed upon!

I play Nereidya Of The  
Sea in my center position.

And to her  
right I play  
a face down  
monster card.

That ends my turn.





To attack  
your face  
down  
card...



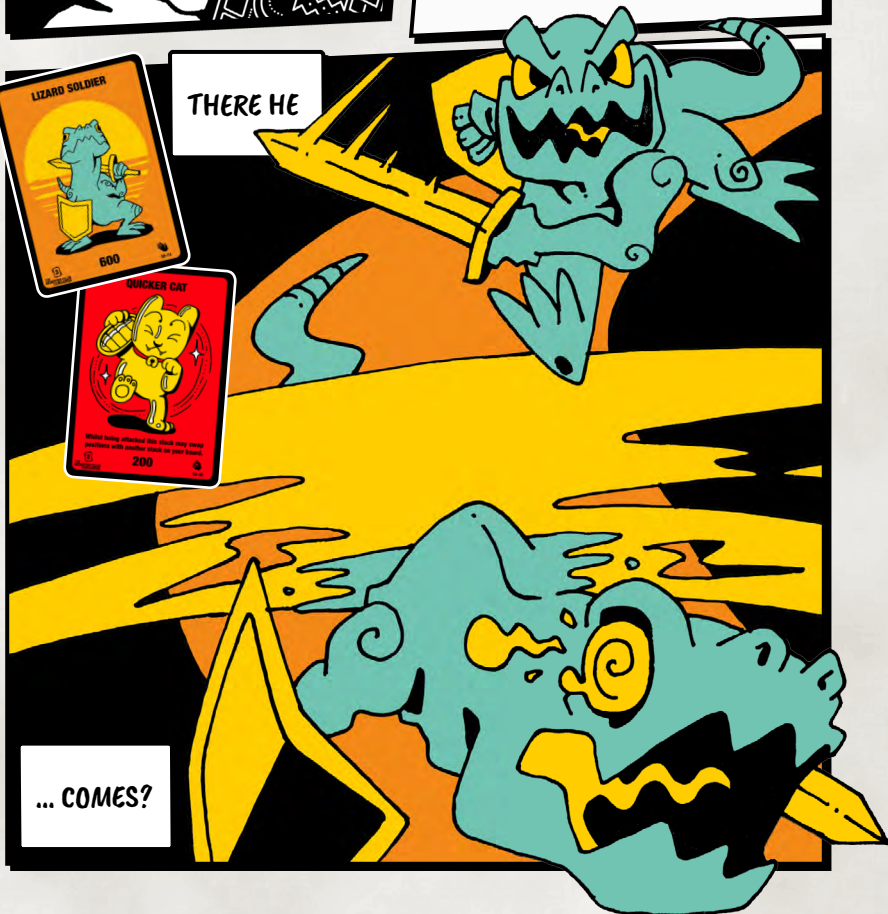
I play Lizard  
Soldier!



THERE HE



... COMES?

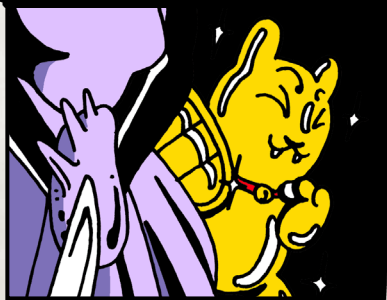






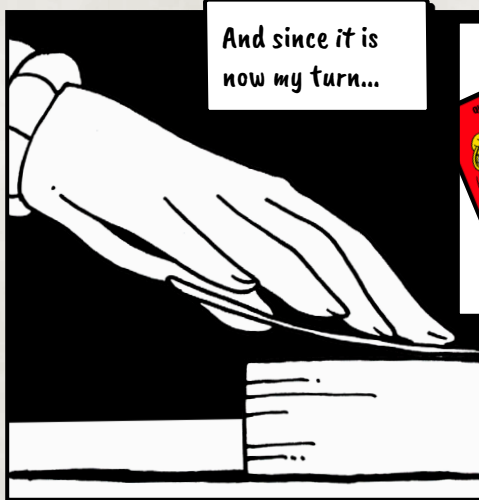
But...

My face down card  
was Quicker Cat.



What  
happened?

Whilst being  
attacked he  
has the ability  
to switch  
its position  
with another  
monster.



And since it is  
now my turn...



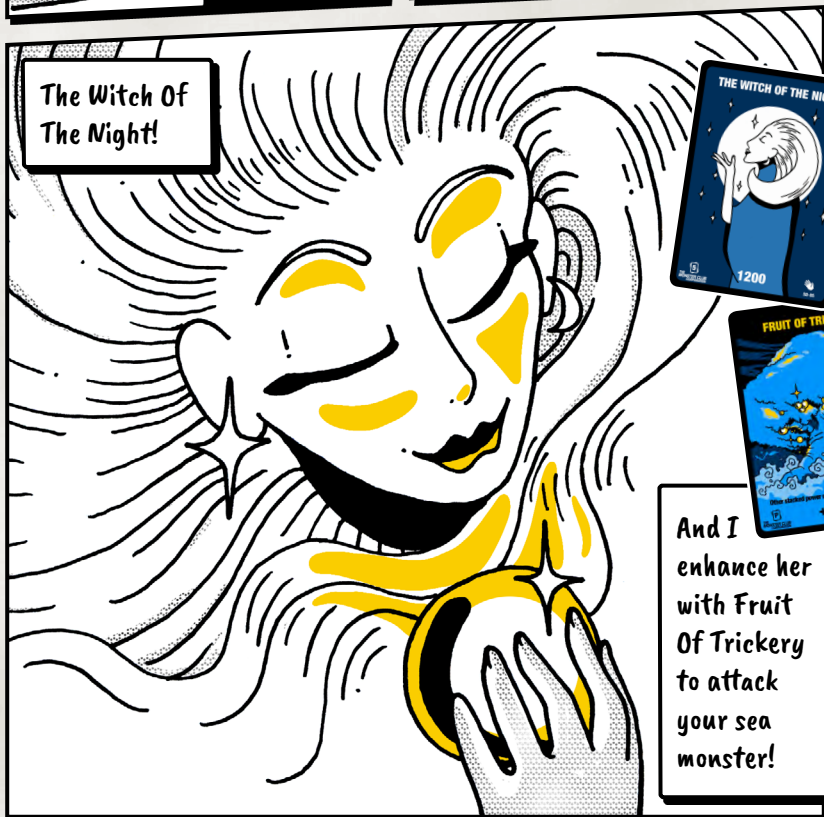
I play a  
power card  
face down to  
Nereidya and  
end my turn.



At least now  
I know what  
you're up to.



And with  
these two  
cards I'm  
going to  
take the  
chance.

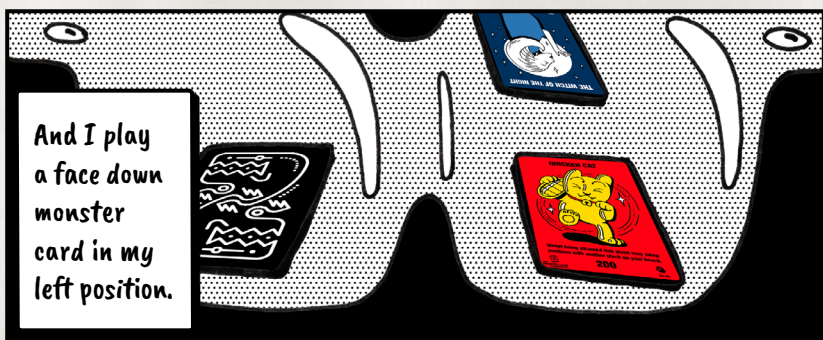
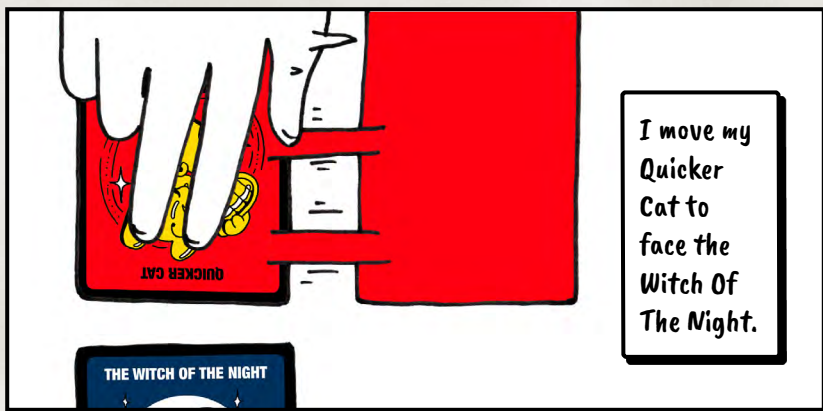


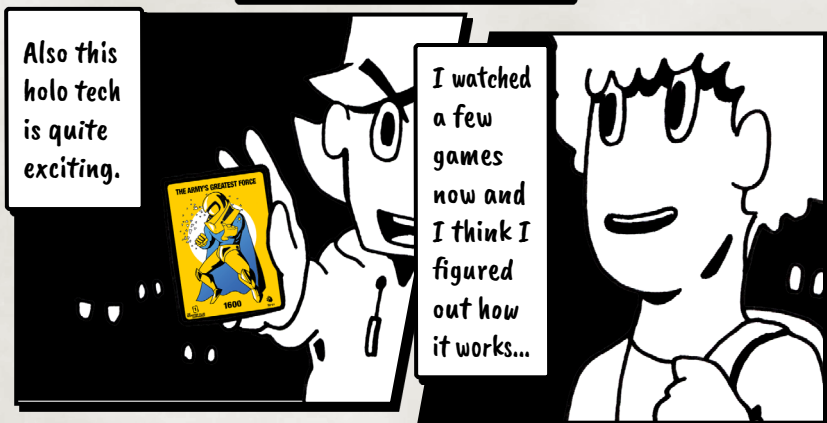
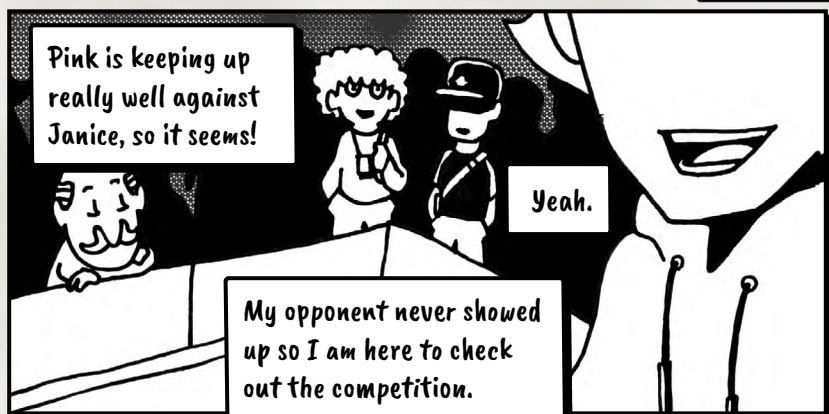
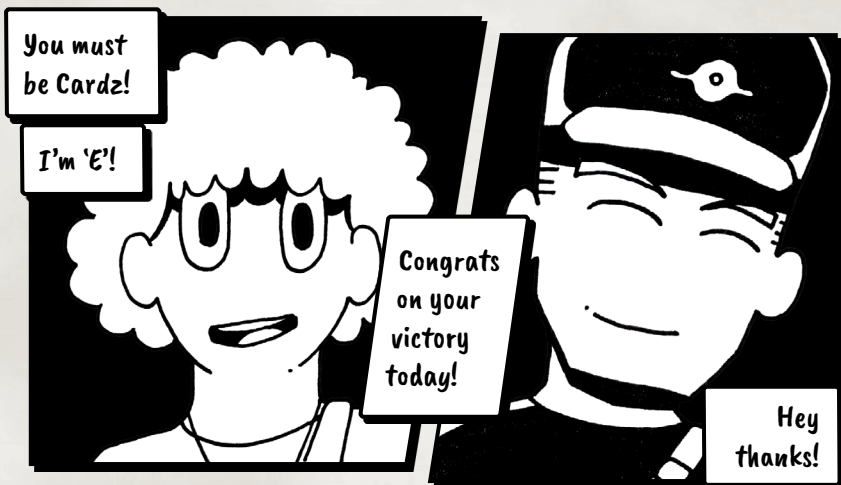
The Witch Of  
The Night!



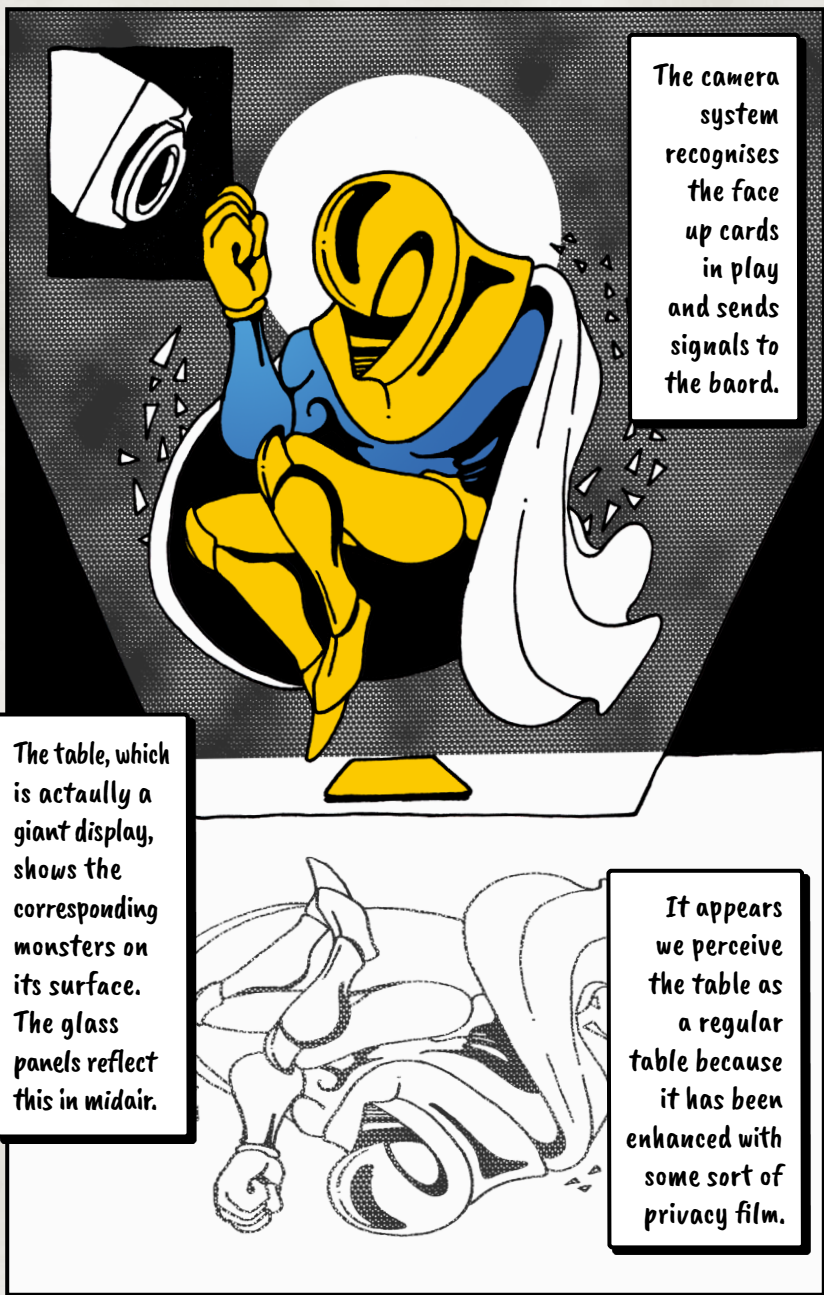
And I  
enhance her  
with Fruit  
Of Trickery  
to attack  
your sea  
monster!











The camera system recognises the face up cards in play and sends signals to the board.

The table, which is actually a giant display, shows the corresponding monsters on its surface. The glass panels reflect this in midair.

It appears we perceive the table as a regular table because it has been enhanced with some sort of privacy film.

The Army's  
Greatest Force!

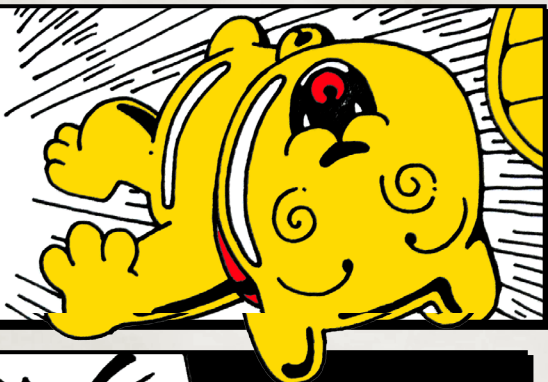
Attack  
the face  
down  
monster  
!







...I destroy your  
Quicker Cat!



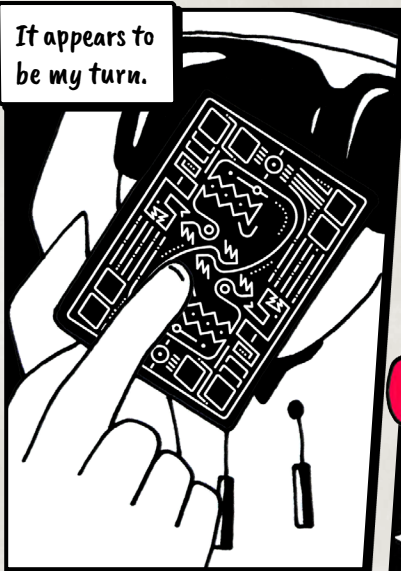
Three down.  
One to go!

No way!



is she  
losing?

It appears to  
be my turn.



Turtles! To my left!



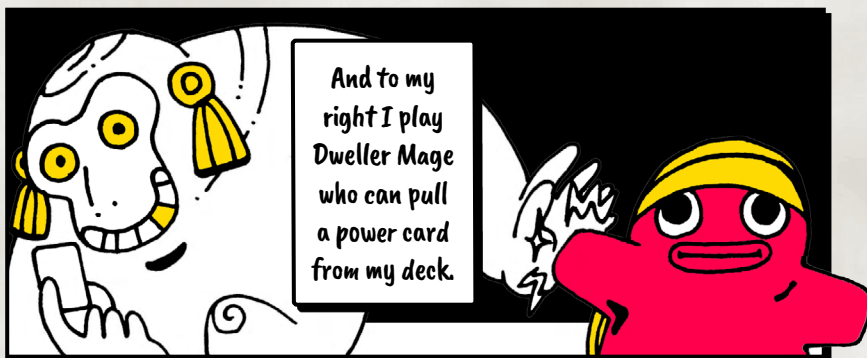
He destroys  
the top  
card of  
your deck...

...and since it's a monster card...



...it's an easy kill!

Ouch!



And to my right I play Dweller Mage who can pull a power card from my deck.

I choose Return From The Grave to return my Combo Dragon from my grave...



...to instantly destroy it to play the Dragon Of The Shimmering!

I play Select & Destroy to my Dweller mage to destroy your witch's score increasing Fruit Of Trickery.

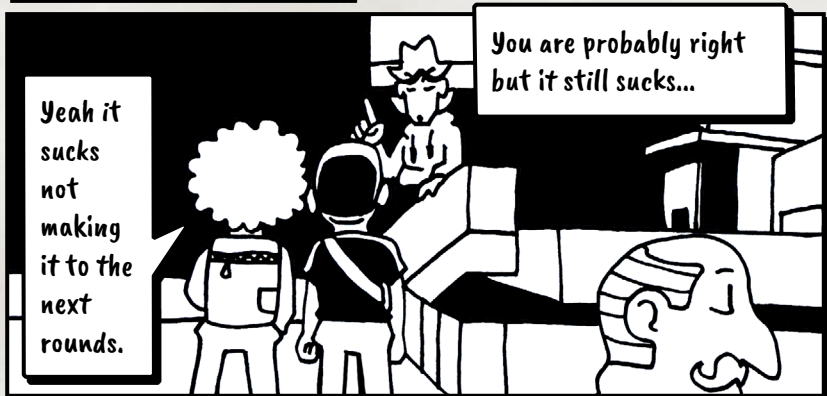
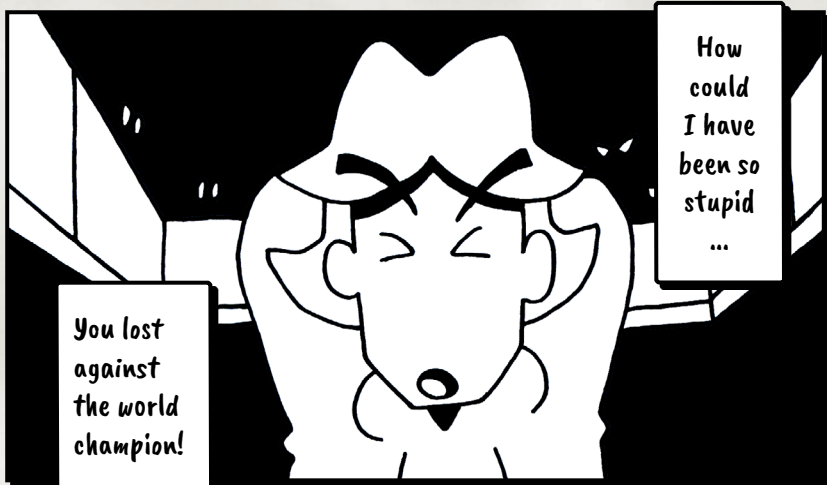


And with Shimmering Strike I destroy both your monsters at once!



And by that...





But thanks  
for the kind  
words...

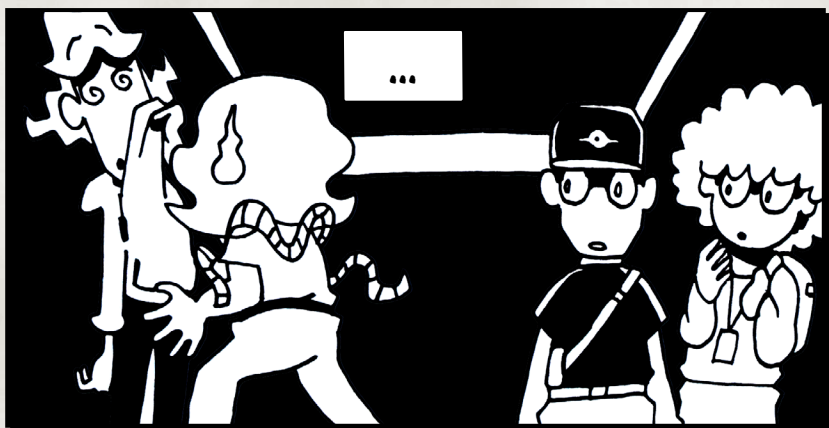
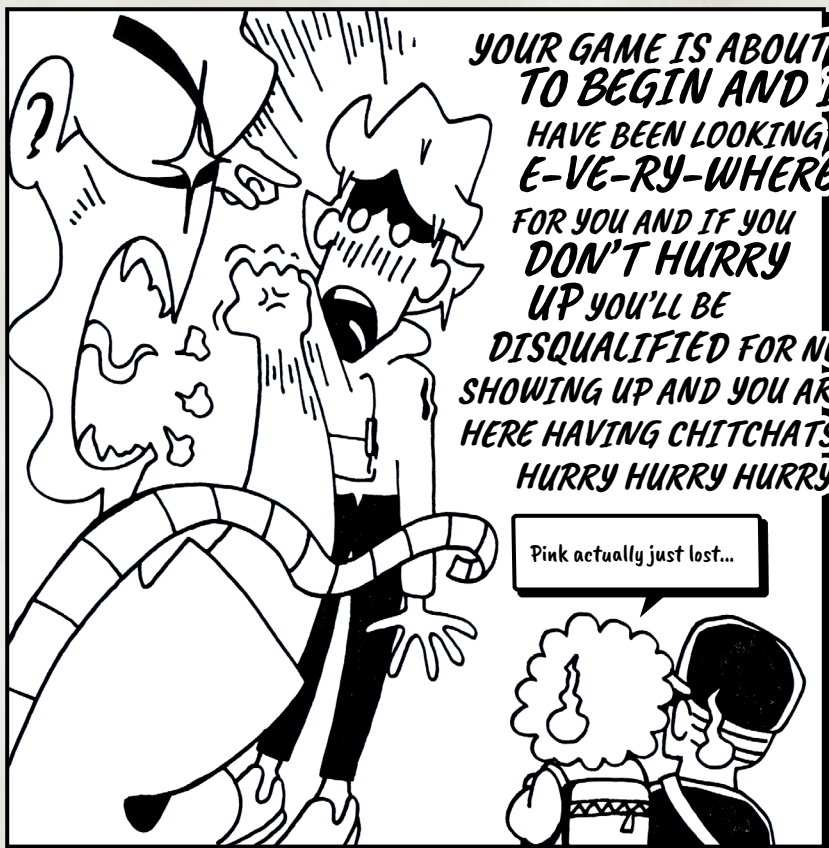
My name is...

!PITIIINK!

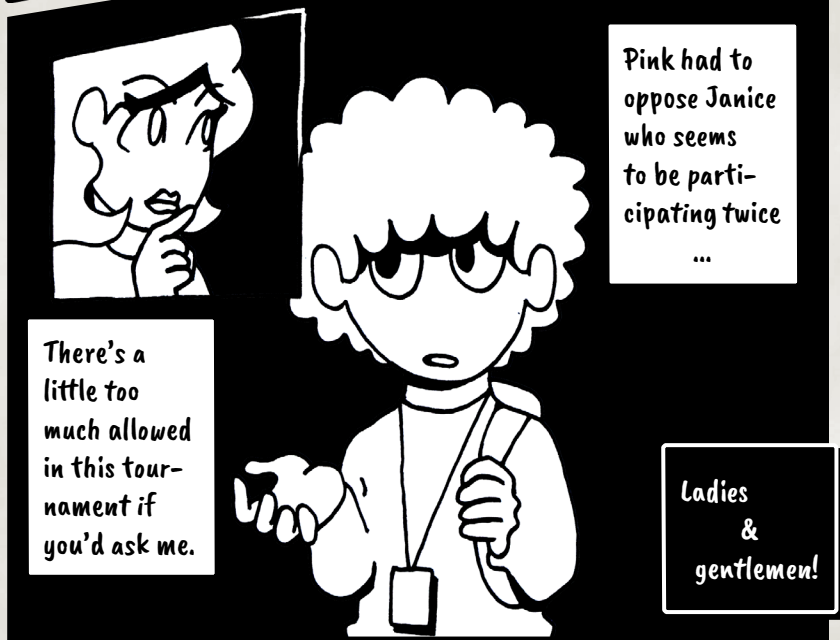
YOU  
ARE  
LATE  
AGAIN  
!



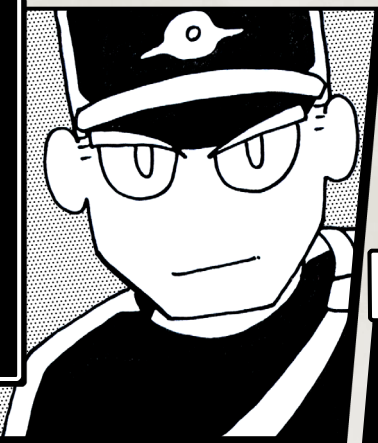








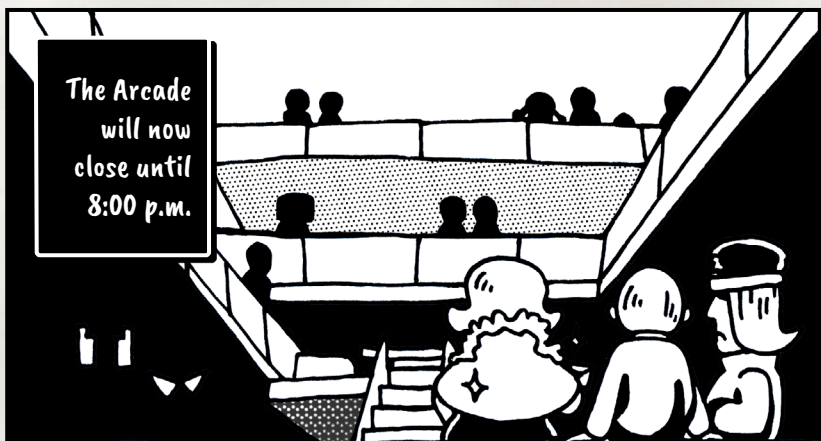
The  
Monster  
Club  
Corpor-  
ation  
congra-  
tulates  
today's  
victors.



hmm...



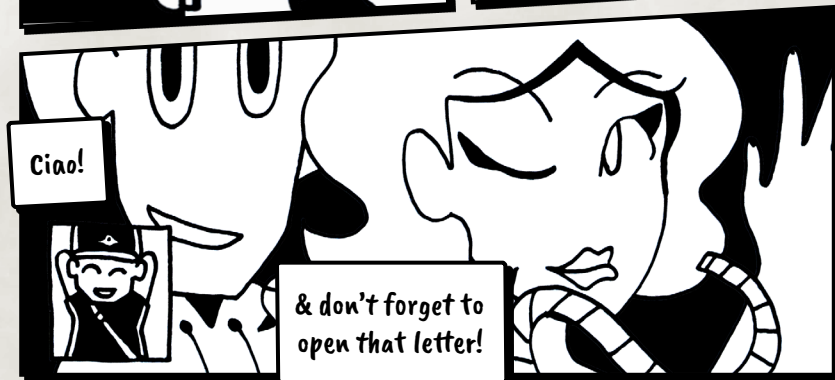
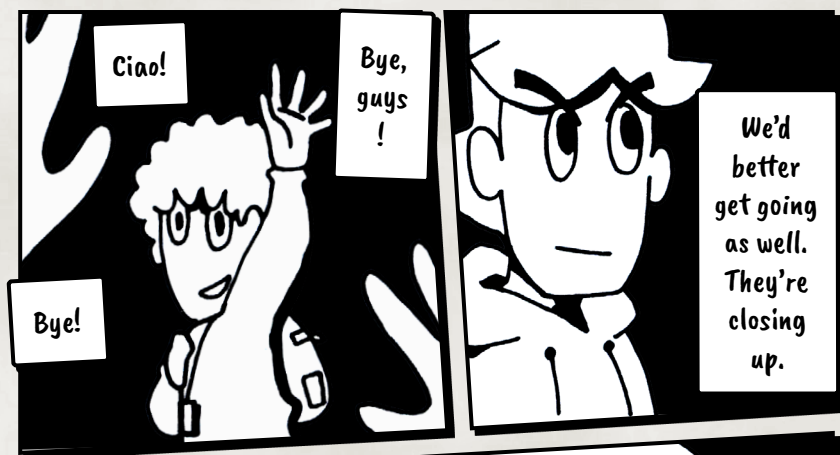
The Arcade  
will now  
close until  
8:00 p.m.

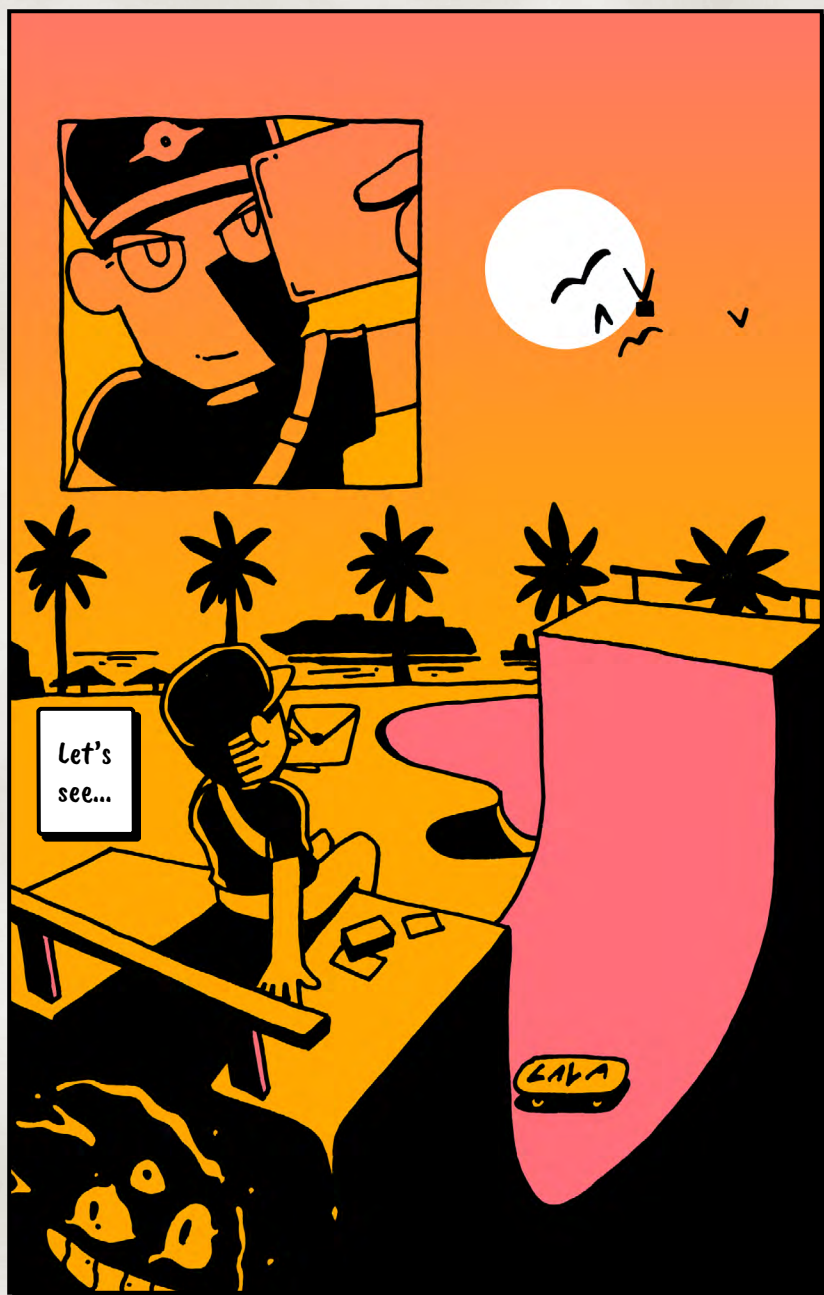


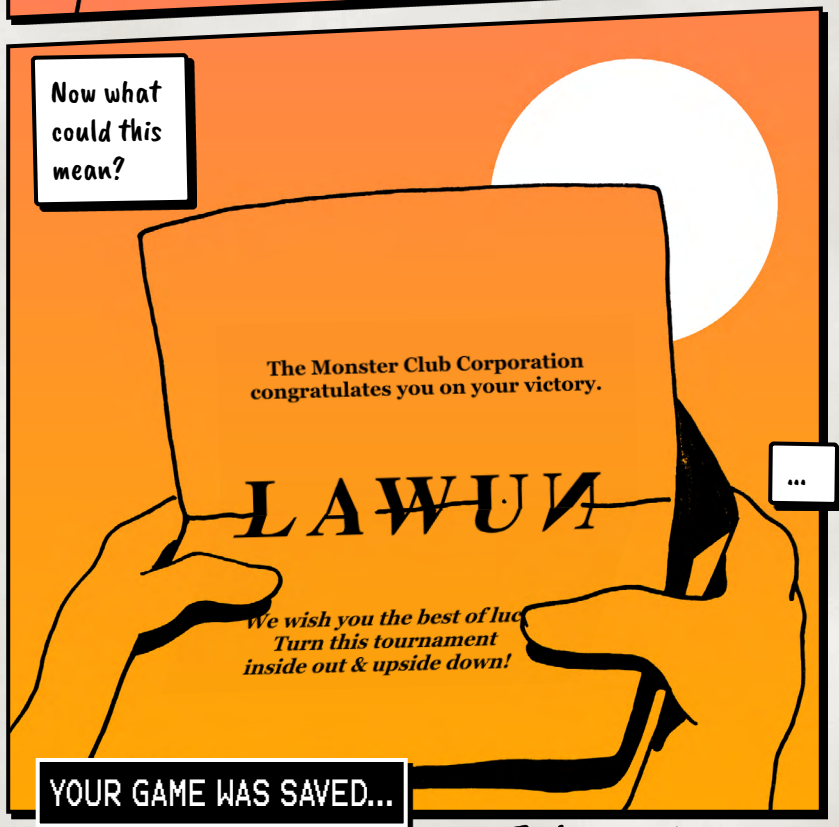
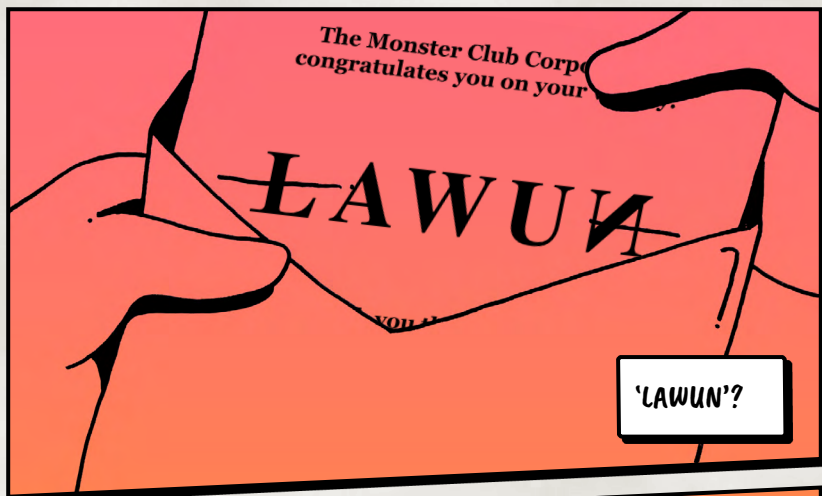
Then we will continue our  
quest for the true victor!

The new  
champion...









To be continued...



# A R T P E O P L E C R E A T I V E C L U B

**WE LOVE TO SUPPORT THE CREATIVE  
MONSTER CLUB COMMUNITY**

**BE FEATURED ON OUR SOCIAL MEDIA  
BY NOTIFYING US OF YOUR NEXT  
MASTERPIECE!**



Duplicates of this card are allowed.

5

THE MONSTER CLUB CORPORATION

100



SD-71

HE SHIMMERING



Destroy a 'Combo Dragon' to play this card.

0

THE MONSTER CLUB CORPORATION

2000



SD-26

THE GREAT CO



GET YOUR  
CARDS

AT [WWW.MONSTERCLUBCARDS.COM](http://WWW.MONSTERCLUBCARDS.COM)



# SHARE THE COMIC SERIES



*It's FREE so surprise a friend!*