

All benefits united

The Kaindl BKS is the machine for quick and easy resharpener of twist- and core drills.

The BKS combines the benefits of our core drill grinding machine KBS/2 and drill grinder BSM 20.

- ✓ sharpens core drills in the range of Ø 12 – 100 mm
- ✓ sharpens twist drills in the range of Ø 2 – 20 mm
- ✓ core drill fixation by collet chuck system
- ✓ precise adjustment by laser device

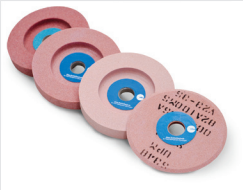
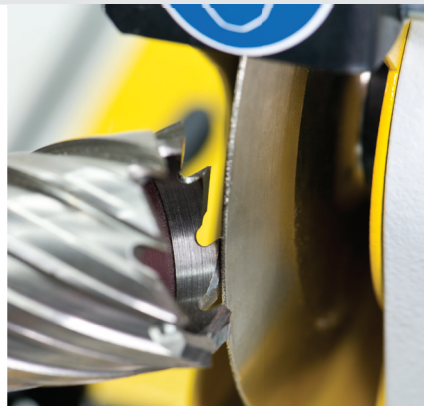
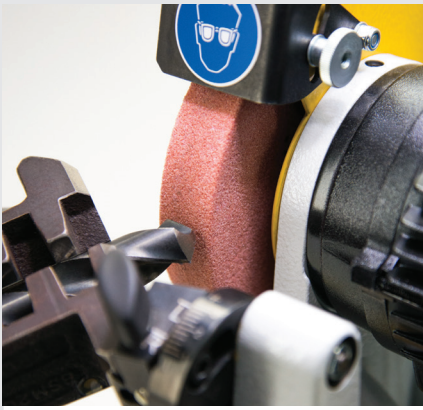


TECHNICAL DATA

| | |
|--------------------------|--------------------------|
| Clamping range: | Ø 2 to 20 mm |
| Core drills: | Ø 12 to 100 mm |
| Corundum grinding wheel: | 125 x 20 x 20 x 75 mm |
| CBN & diamond wheel: | 125 mm |
| Weight net: | 43 kg |
| Revolutions: | 2840 rpm ⁻¹ |
| Dim (L x W x H): | 500 x 450 x 310 mm |
| Motor: | 230 V, 50 - 60 Hz, 120 W |

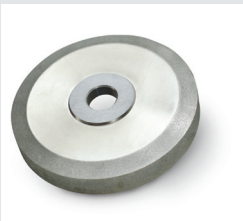
BASIC VERSION

- Collet clamping system incl. 19 mm collet
- Laser adjustment device
- Precision optical lens lighted
- Corundum grinding wheel grit K80
- Index plates for 4/5/8/10 teeth core drills
- Grinding wheel dresser with rotating diamond
- CBN-grinding wheel Ø 125 mm B126, covered on 3 sides
- CBN-grinding wheel Ø 125 mm B126, covered on 2 sides
- Granite base slap



Corundum grinding wheel

- Item No. 10895** Grit 60 - 125 x 20 x 20 mm (coarse)
- Item No. 10890** Grit 80 - 125 x 20 x 20 mm (standard)
- Item No. 10891** Grit 180 - 125 x 20 x 20 mm (fine)
- Item No. 10893** Grit 100 - 125 x 05 x 20 mm (HSS-wood drills)
- Item No. 11103** Grit 100 - 125 x 10 x 20 mm



Diamond grinding wheel

- Item No. 14580** wide, complete with support 125 mm, covered on 3 sides, D76/3 for HM-wood drills
- Item No. 14581** thin, complete with support 125 mm, covered on 3 sides, D76/3 for HM-wood drills
- Item No. 16490** CBN-grinding wheel B76 (standard)
- Item No. 17073** CBN-grinding wheel B126
- Item No. 17556** CBN-grinding wheel B46



CBN-grinding wheel

- Item No. 17053** covered on 3 sides B126 with radius
- Item No. 17055** covered on 2 sides B126 for back of tooth



Cleaning- and sharpening stone

- Item No. 15855** for diamond wheels



- Item No. 18658** Grinding wheel fixture



- Item No. 10889** Magnetic depth stop for cutters



Support sleeve for short welding point drills

- Item No. 10900** 5 and 6 mm
- Item No. 10976** 8 and 10 mm

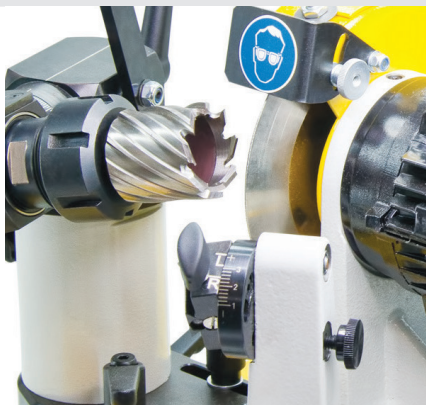


- Item No. 10875** Countersink sharpening device SVR 20



Morse taper sleeves

- Item No. 10901** for short MK 1-drills
- Item No. 10902** for short MK 2-drills



Collet set
Item No. 14348 for SVR 20 (Set 6, 8, 12 mm)



Item No. 10880 Nut for extra collets



Item No. 10881 Cam for cross rose bits, single flute



Collet set
Item No. 16398 7 pcs. for BKS (8/10/12/14/16/18/20 mm)



Index plate
Item No. 10981 T-6 for core drills with 6 teeth
Item No. 10982 T-7 for core drills with 7 teeth
Item No. 11009 T-9 for core drills with 9 teeth
Item No. 11012 T-12 for core drills with 12 teeth
Item No. 11063 T-14 for core drills with 14 teeth

Special index plates upon request

Item No. 12385 Adaptor cable 230 V Schuko / 400 V CEE