

Step 1:

User download, install, register and log in

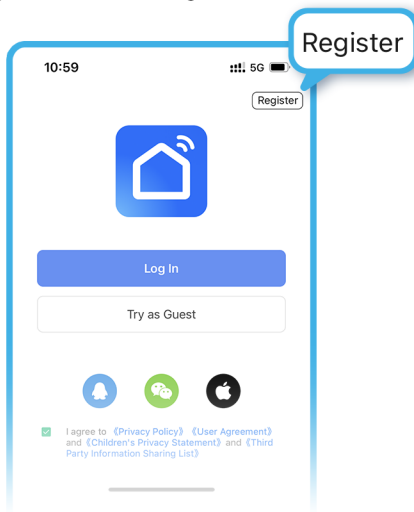
1. Download and install
Scan the QR code on the right to download the "Smart Life" APP



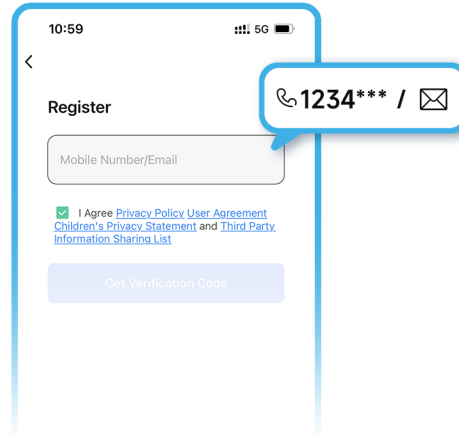
2. Or search for "smart life" APP to download



3. After the download is complete, click on the upper right corner to register



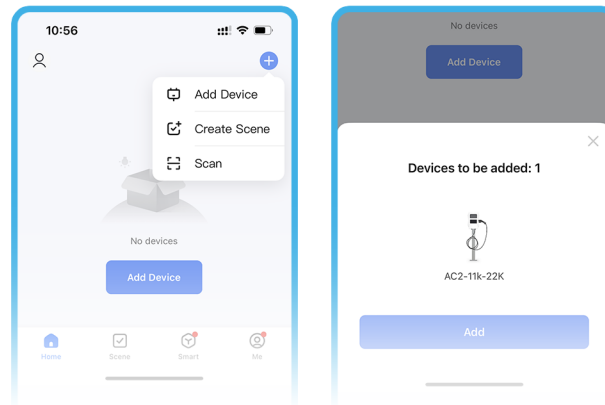
4. Enter "mobile phone number" or "email to register"



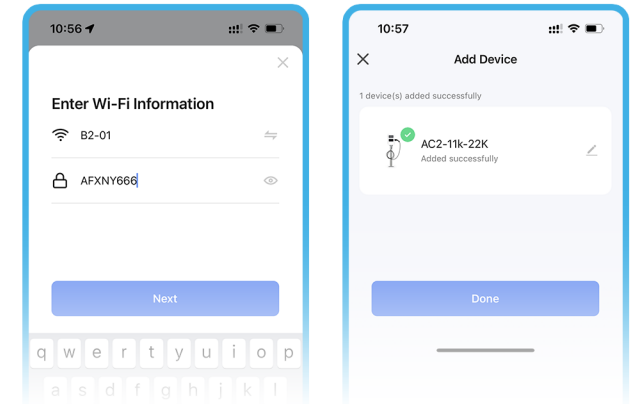
Step 2:

Open and connect to WiFi and Bluetooth, search device point "Add", add device

1. Click "Add Device" in the upper right corner
2. Then according to the pop-up charging device, click "Add"



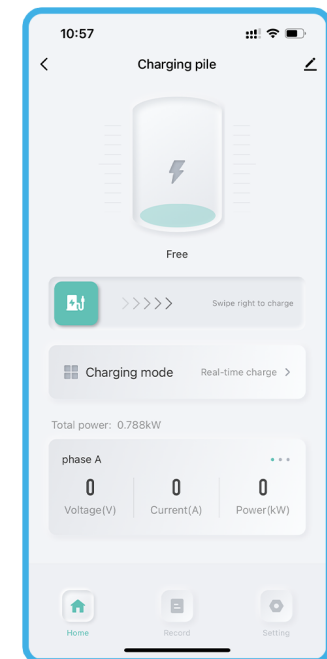
3. Enter the password of the "wifi" you want to connect to and click Next. Adding completed



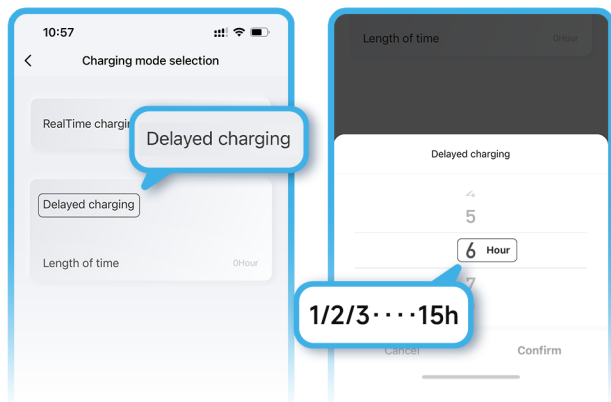
Step 3:

After the addition is completed, you can start charging the car on your mobile phone.

1. Enter the charging interface and perform operations



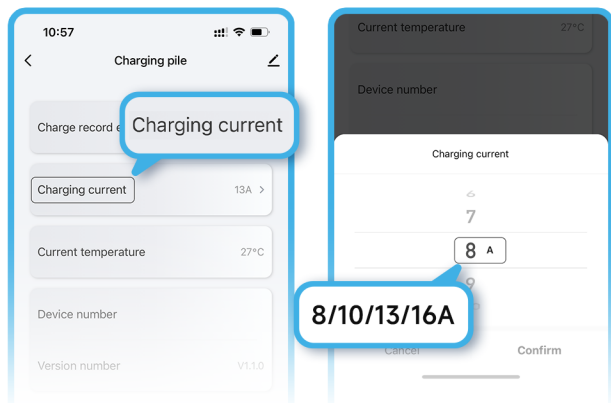
2. Click "charging mode" and select "real time charging" to adjust the delayed charging time.



Note:

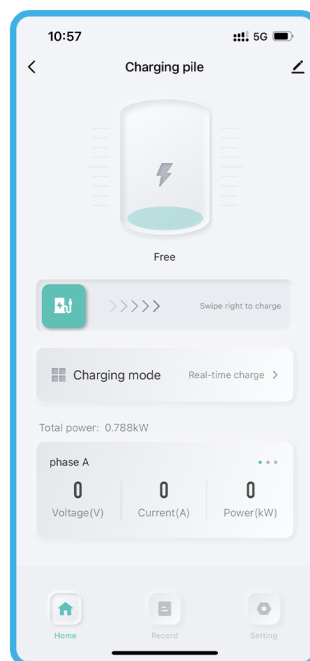
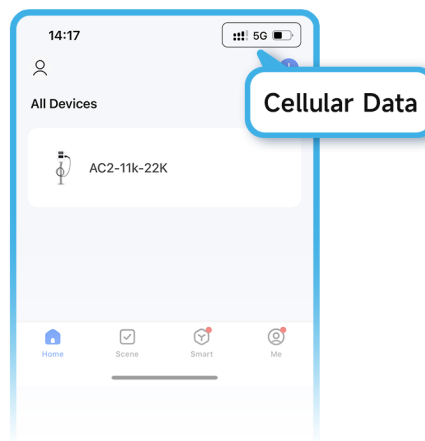
If you want to make an appointment for charging time, you must adjust the time back to "0" before you can adjust the time.

3. Click "Charging current" in "Settings" to adjust the charging current.

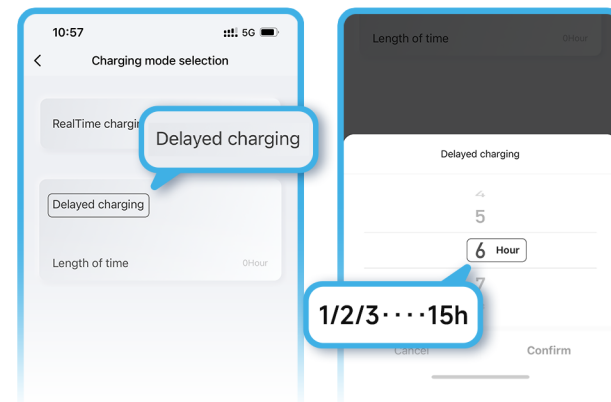


Scenario 2:

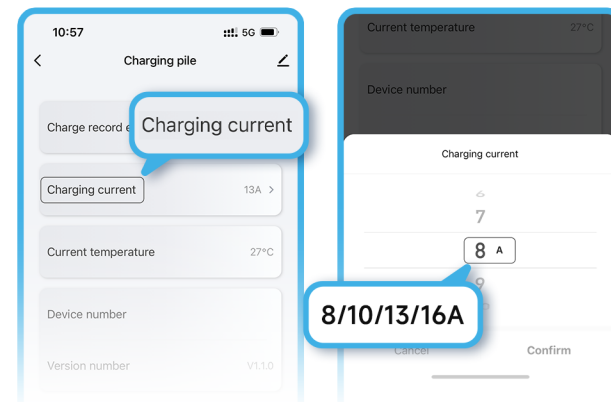
After the APP is bound to the charger, you do not need to connect to WiFi or Bluetooth to remotely control the charger through the APP. The charger is within WiFi coverage and is connected normally.



1. Click "charging mode" and select "real time charging" to adjust the delayed charging time.



2. Click "Charging current" in "Settings" to adjust the charging current.



Note:

Changing the current can only be completed before the car charging gun is inserted into the car. Because the current is adjusted during charging, it is easy to lead to overcurrent, and the protection function is reported to report an error;