

STOUT
MANUFACTURING



TAKING CARE OF YOUR
HEADACHES

4605 Old Denton Rd, Haltom City, Tx, 76117
cfender@stoutmanufacturing.com
kfender@stoutmanufacturing.com
432-631-2698

HEAVY DUTY, 3-PIECE HEADACHE RACKS

02



Our Heavy Duty standard headache racks provide optimal protection for rear windshields and top of cab.

Our heavy duty, lit, headache racks include (2) red and (2) white high quality, 10 diode, LED lights and 12' of insulated lighting cable.



HEAVY DUTY, SINGLE PIECE HEADACHE RACKS

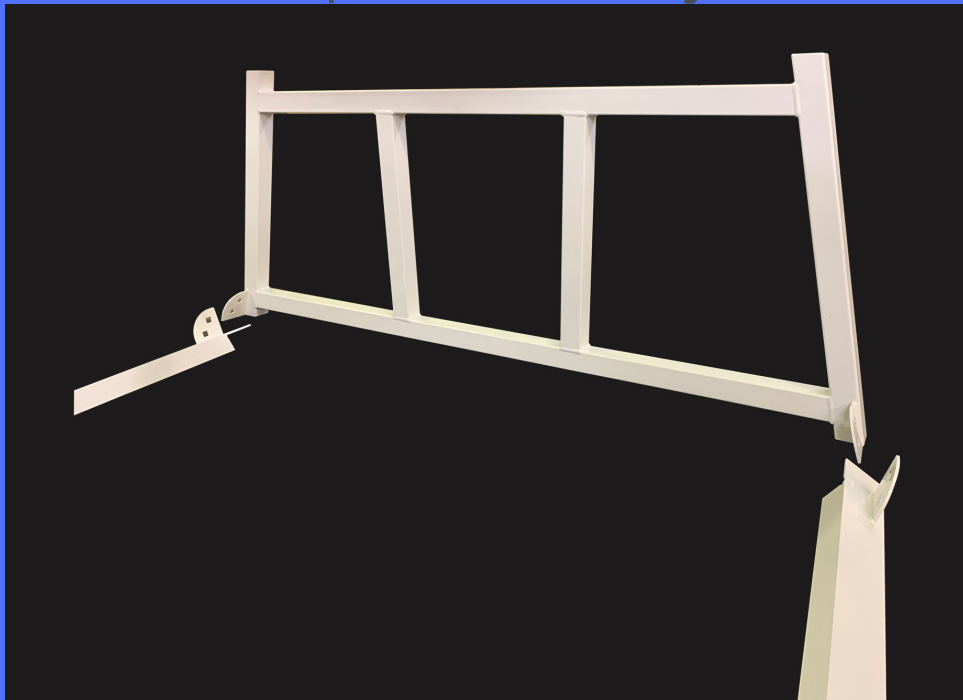
03



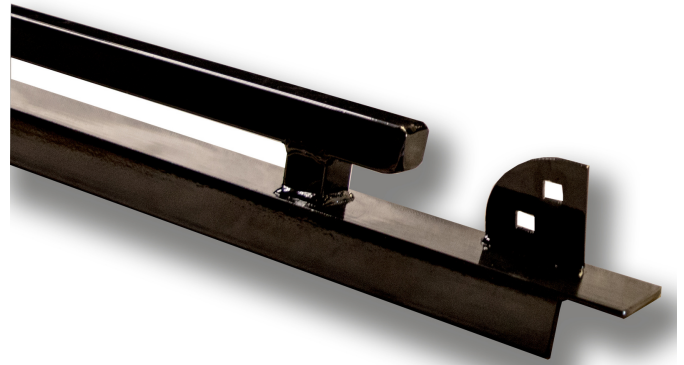
Stout offers all of our headache racks in a single piece option. These racks are fully welded with 24" legs.

CONTRACTOR RACKS

Our lightweight contractor racks are available in single piece or 3 piece options. They are also available in open backed (below), or with a flat expanded metal backing



04



Bed rails come in angle only, toolbox cut, and full-rail models, in 24", 5'5", 6'6", 6'9", and 8' lengths. These rails are designed to optimize tie off points for greater utility. Each set of bed rails included a bolt package of (4) carriage bolts, washers and locknuts.

Stout also provides (2) Toggler anchors with each bed rail set. These anchors allow bed rails to be anchored to the truck bed much closer to the front of the bed, reducing risk of breakage from vibration.

05

All Stout Manufacturing headache racks and bed rails come standard in a black gloss powder coat, with the exception of the contractor racks which come in white gloss. Other colors are available in orders of 10 or greater, just reach out for pricing options.

Each Stout Manufacturing headache rack is welded by robotic welders, ensuring consistent quality. The robots are 78% faster than hand-welding racks, enabling us to turn over your largest orders much faster than the competition

All Stout headache racks and bed rails are proudly manufacturing and powder coated in the USA. 

Contact Us

4605 Old Denton Rd, Haltom City, Tx 76117

+432-631-2698

cfender@stoutmanufacturing.com

kfender@stoutmanufacturing.com