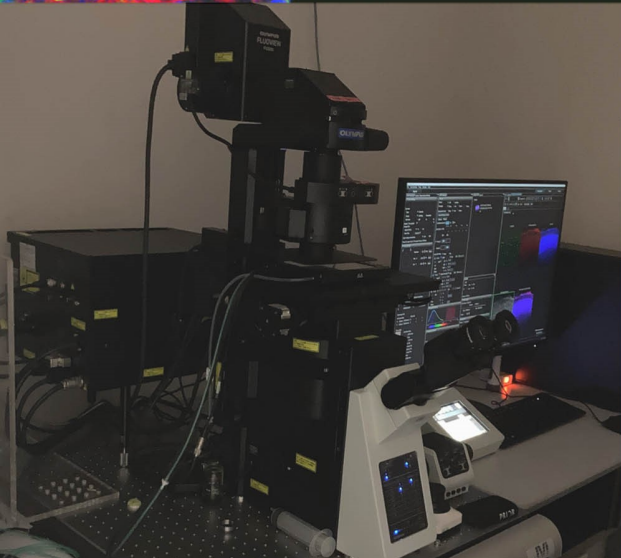
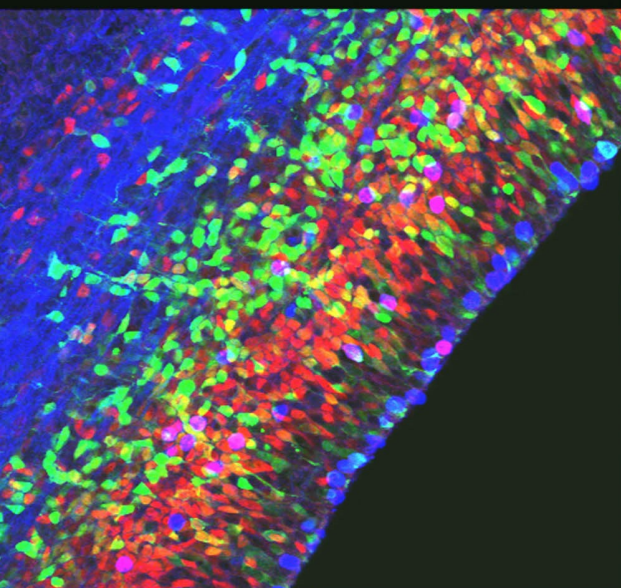
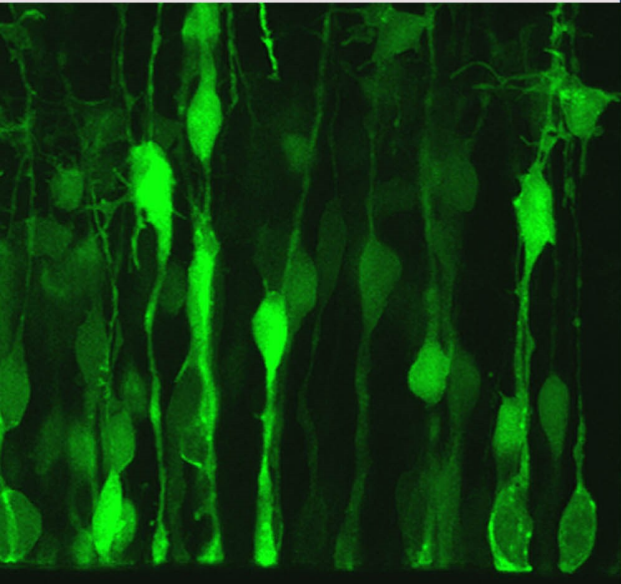


OKAYAMA  
UNIVERSITY

# Join Our Research Lab: Department of Human Morphology!



## About Us:

- **Department:** Department of Human Morphology
- **Field:** Basic Medical Sciences
- **Research Aims:** Our fundamental scientific goals are to understand the mechanisms behind brain formation, brain evolution, and how biological structures are created. We aim to apply this knowledge to organ engineering, disease understanding, and therapeutic advancements.
- **Research Areas:** Developmental Neuroscience, Organogenesis, Cancer, and more.
- **Methods:** Molecular, cellular, and genetic approaches, live imaging techniques.

## Representative Publications:

1. Nature Communications, 10, 2780 (2019)
2. Nature Communications, 7, 11349 (2016)  
, and more



Prof. Ayano Kawaguchi  
MD, PhD

## We Are Recruiting!

Doctoral Program /Master's Program :  
Okayama University Graduate School of  
Medicine, Dentistry and Pharmaceutical Sciences

## Who Can Apply:

We welcome applicants from various academic backgrounds, not  
limited to medical sciences.

## Contact Us:

Feel free to reach out for any inquiries,  
Email: [em2kai@okayama-u.ac.jp](mailto:em2kai@okayama-u.ac.jp)

## Learn More:

For more details, please visit our website

