



Model	DT362GL	DT382GL	DT301Y	DT311Y
<b>System</b>				
<b>CPU</b>	Intel® Pentium® Silver 4-Core, 1.1 GHz (up to 2.7 GHz)		Intel® Pentium® Gold 7505, 2-Core, up to 3.5 GHz Intel® Core™ i5-1135G7, 4-Core, up to 4.2 GHz Intel® Core™ i7-1165G7, 4-Core, up to 4.7 GHz	Intel® Core™ i5-1135G7, 4-Core, up to 4.2 GHz Intel® Core™ i7-1165G7, 4-Core, up to 4.7 GHz
<b>RAM</b>	8GB	8GB	8GB to 32GB	8GB to 32GB
<b>Storage</b>	256GB flash	256GB flash	256GB to 2TB Flash	256GB to 2TB Flash
<b>Operating System</b>	Microsoft® Windows® 10/11 IoT Enterprise		Microsoft® Windows® 10/11 IoT Enterprise	
<b>NIST Compliance</b>	NIST Compliant BIOS Available		NIST Compliant BIOS Available	
<b>Display</b>	6" LED-backlight (350 nits) screen with capacitive touch	8" LED-Backlit, High-Brightness (800 nits) Touchscreen	10.1" LED-Backlit, High-Brightness (800 nits) Touchscreen	11.6" LED-Backlit, High-Brightness (1000 nits) Touchscreen
<b>Display Resolution</b>	720 x 1440	1280 x 800	1920 x 1080	1920 x 1080
<b>Fan/Fanless</b>	Fanless	Fanless	Fanless	Fanless
<b>Switches &amp; Buttons</b>	1 x Power Button, 2 x Trigger Buttons	1 x Power Button, 2 x Trigger Buttons, 2 x Brightness Buttons, 4 x Programmable Buttons	1 x Power Button, 2 x Brightness Buttons, 5 x Programmable Buttons	1 x Power Button, 2 x Brightness Buttons, 5 x Programmable Buttons
<b>Microphone</b>	N/A	N/A	Built-In Microphone	Built-In Microphone
<b>Speaker</b>	N/A	Built-In Speaker	Built-In Speaker	Built-In Speaker

**Network Interface**

<b>WLAN</b>	Wi-Fi 802.11ac, 2.4/5 GHz Dual Band		Wi-Fi 802.11ac, 2.4/5 GHz Dual Band	
<b>BT</b>	4.2 LE	4.2 LE	5.2	5.2

**I/O Ports**

<b>USB Port</b>	1 x USB Type-C (data transmitting and charging; data transmitting only available in one insertion direction)	1 x USB 3.0, 1 x USB Type-C (data transmitting and charging)	1 x USB 3.0, 1 x USB Type-C	1 x USB 3.0, 1 x USB Type-C
<b>Headset Jack</b>	N/A	1 (3.5 mm)	1 (3.5 mm)	1 (3.5 mm)
<b>DC-In</b>	N/A	N/A	1	1
<b>Ethernet</b>	N/A	N/A	1	1
<b>SD Slot</b>	N/A	1 x Micro SD Card Slot	N/A	N/A
<b>Smart Card/CAC Reader</b>	Full Slot, Reads ISO 7816 T=0, T=1; 1.8/3/5V Smart Card	N/A	Full Slot (reads ISO 7816 T=0, T=1); 1.8/3/5V Smart Card	

**Mechanical and Environmental**

<b>AC/DC Adapter</b>	Input: 100-240V AC; Output: 20V DC, 3.25A		Input: 100-240V AC; Output: 19V DC, 3.42A	
<b>Battery Pack</b>	Hot-Swappable Battery (3300mAh)	Hot-Swappable Battery (7.6V, 6000mAh) Hot-Swappable Battery (11.4V, 5400mAh) (Optional) Hot-Swappable Battery (11.4V, 8000mAh) (Optional)	Hot-Swappable Battery (11.4V, 5400mAh) Hot-Swappable Battery (11.4V, 8000mAh) (Optional)	
<b>Enclosure</b>	ABS + PC Plastic		ABS + PC Plastic and Magnesium-Aluminum Alloy	
<b>Dimensions (H x W x D)</b>	7.6 x 3.7 x 1.2 in/192 x 95 x 31 mm	6.1 x 9.4 x 1.3 in/155 x 238 x 33 mm	7.8 x 11 x 0.86 in/198 x 280 x 21.9 mm	8.3 x 12.4 x 0.86 in/212 x 316 x 21.9 mm
<b>Weight</b>	1.1 lbs/485 g	3.43 lbs/1.1 kg	3.1 lbs/1.4 kg	3.5 lbs/1.6 kg
<b>Durability</b>	IP65 and MIL-STD-810G Certified Class 1, Division 2, Groups A, B, C and D (Optional)	IP65 and MIL-STD-810G Certified	IP65, MIL-STD-810G and MIL-STD-461F Certified	
<b>Hazard of Electromagnetic Radiation to Ordnance (HERO) Testing</b>	Yes	Yes	Yes	Yes
<b>Regulatory</b>	FCC Class B, RoHS Compliant		FCC Class B, CE, RoHS Compliant	
<b>Temperature</b>	Operation: -10°C to 50°C (14°F to 122°F)  Storage: -20°C to 60°C (-4°F to 140°F)		Operation*: -10°C to 60°C (14°F to 140°F) Optional -30°C to 60°C (-22°F to 140°F) *For battery safety and optimal functionality and performance, the recommended usage temperature range is from -10°C to 45°C (14°F to 113°F)  Storage: -55°C to 70°C (-67°F to 158°F)	
<b>Humidity</b>	0% - 90% Non-Condensing			

**Major Options**

<b>Camera</b>	8MP Back Camera		2MP Front Camera & 8MP Back Camera	
<b>Barcode Scanner</b>	2D Barcode Scanner (Reads 1D & 2D)		2D Barcode Scanner (Reads 1D & 2D)	
<b>GNSS Module</b>	GPS Module		GPS Module	
<b>NFC/RFID Reader</b>	HF 13.56 MHz, ISO 15693, 14443A(B), 18000-3 Mode 1		N/A	N/A
<b>UHF RFID Reader</b>	865 – 928 MHz, EPCglobal Class 1 Gen 2/ISO 18000-6C; Reading Distance of 16 ft (4.87 m) with Integrated ThingMagic Micro Module & Embedded Antenna; Reading Range of 30 ft (9.1 m) with Trigger Grip Antenna	865 – 928 MHz, EPCglobal Class 1 Gen 2/ISO 18000-6C; 16 ft (4.87 m) Reading Distance	865 – 928 MHz, EPCglobal Class 1 Gen 2/ISO 18000-6C; 16 ft (4.87m) Reading Distance	865 – 928MHz, EPCglobal Class 1 Gen 2/ISO 18000-6C; 30 ft (9.14m) Reading Distance
<b>Mobile Broadband</b>	N/A	N/A	4G LTE/AWS	4G LTE/AWS
<b>Long-Range BT</b>	Class 1 BT (1000 ft)	Class 1 BT (1000 ft)	Class 1 BT (1000 ft)	Class 1 BT (1000 ft)

\* Specifications subject to change without notice.

# Rugged Tablets



Model	DT313Y	DT340T
-------	--------	--------

## System

CPU	Intel® Core™ i5-10210U, 4-Core, up to 4.10 GHz Intel® Core™ i7-10710U, 6-Core, up to 4.7 GHz	Intel® Core™ i5-8250U, 4-Core, 1.6 GHz (up to 3.4 GHz) Intel® Core™ i7-8550U, 4-Core, 1.8 GHz (up to 4.0 GHz)
RAM	8GB to 32GB	8GB to 64GB
Storage	256GB to 2TB flash	256GB to 2TB flash
Operating System	Microsoft® Windows® 10/11 IoT Enterprise	
NIST Compliance	NIST compliant BIOS available	
Display	13.3" LED-Backlit, High-Brightness (1000 nits) Touchscreen	14" LED-Backlit, High-Brightness (1000 nits) Touchscreen
Display Resolution	1920 x 1080	1920 x 1080
Fan/Fanless	Fanless	Fanless
Switches & Buttons	1 x Power Button, 2 x Brightness Buttons, 5 x Programmable Buttons	1 x Power Button, 2 x Programmable Buttons
Microphone	Built-In Microphone	Built-In Microphone
Speaker	Built-In Speaker	Built-In Speaker

## Network Interface

WLAN	Wi-Fi 802.11ax, 2.4/5 GHz Dual Band	
BT	4.2 LE	4.2 LE

## I/O Ports

USB Port	3 x USB 3.0, 1 x USB Type-C	1 x USB 3.0, 2 x USB 2.0
Headset Jack	1 (3.5 mm)	1 (3.5 mm)
DC-in	1	1
HDMI	N/A	1
Ethernet	1	1
Smart Card/CAC Reader	Full Slot (reads ISO 7816 T=0, T=1); 1.8/3/5V Smart Card	

## Mechanical and Environmental

AC/DC Adapter	Input: 100-240V AC; Output: 19V DC, 3.42A	Input: 100 – 240V AC; Output: 19V DC, 6.31A
Battery Pack	Hot-Swappable Battery (11.4V, 5400mAh) Hot-Swappable Battery (11.4V, 8000mAh)(Optional)	2 x Hot-Swappable Battery (11.4V, 5400mAh) 2 x Hot-Swappable Battery (11.4V, 8000mAh)(Optional)
Enclosure	ABS + PC Plastic and Magnesium-Aluminum Alloy	ABS + PC Plastic and Magnesium-Aluminum Alloy with Antimicrobial Coating
Dimensions (H x W x D)	10.6 x 13.2 x 0.8 in/270 x 335 x 21 mm	9.6 x 14.8 x 1.16 in/244 x 376 x 29.5 mm
Weight	3.97 lbs/1.8 kg	6.38 lbs/2.9 kg
Durability	IP65 and MIL-STD-810G Certified	IP65 and MIL-STD-810G Certified
Regulatory	FCC Class B, CE, RoHS Compliant	
Temperature	Operation*: -10°C to 60°C (14°F to 140°F) Optional -30°C to 60°C (-22°F to 140°F) <small>*For battery safety and optimal functionality and performance, the recommended usage temperature range is from -10°C to 45°C (14°F to 113°F)</small>	Operation*: -20°C to 60°C (-4°F to 140°F), tested under MIL-STD-810G method 501.6, Procedure II, and method 502.6, Procedure II <small>*For battery safety and optimal functionality and performance, the recommended usage temperature range is from -10°C to 45°C (14°F to 113°F)</small>
Humidity	Storage: -55°C to 70°C (-67°F to 158°F) 0% – 90% Non-Condensing	

## Major Options

Graphics Card	N/A	Built-In Graphics Card (NVIDIA GeForce® GTX 1050 with 4GB VRAM)
Camera	2MP Front Camera & 8MP Back Camera	N/A
Barcode Scanner	2D Barcode Scanner (Reads 1D & 2D)	N/A
GNSS Module	GPS Module	N/A
Mobile Broadband	4G LTE/AWS	4G LTE/AWS
Antenna	N/A	Dual pass through the built-in docking cradle antenna

\* Specifications subject to change without notice.

## Accessories

- Digital Pen



- Desktop Charging Cradle



- Docking Keyboard



- Slim Detachable Keyboard
- Handstrap with Kickstand



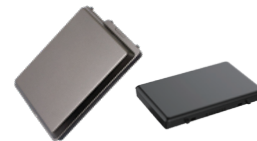
- Tablet Mount Cradle



- Battery Charging Kits



- Battery Pack



- Keyboard Mounting Kit for Vehicle/Wall Mount Cradle

- Vehicle Mount Cradle

