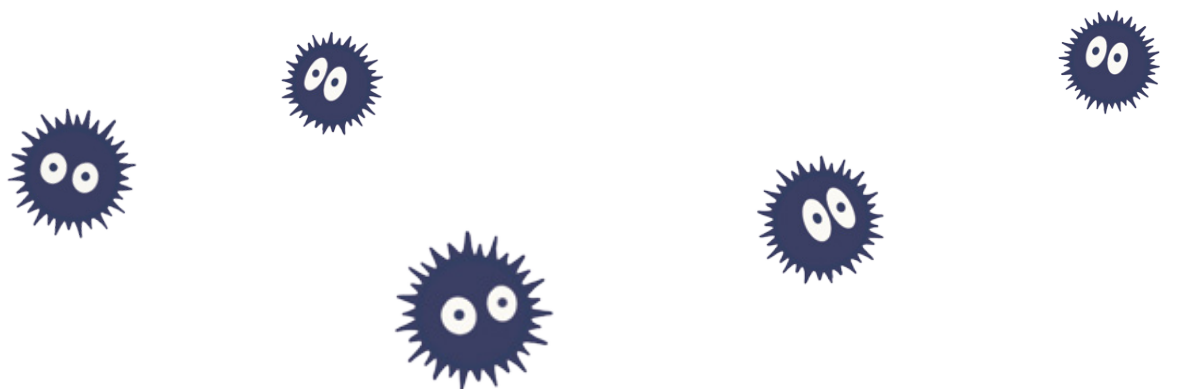
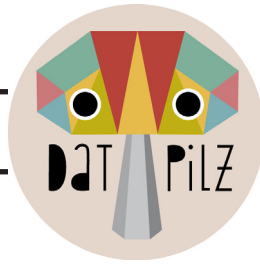


# MINI TOTORO AND FRIENDS

CROCHET PATTERN





Thanks for your interest in one of my crochet patterns!  
You can find more of my amigurumi and patterns here:  
[instagram.com/datpilz](https://www.instagram.com/datpilz) ★ [etsy.com/shop/datpilz](https://www.etsy.com/shop/datpilz)  
[www.datpilz.com](http://www.datpilz.com)

---

## ABBREVIATIONS

st	stitch
ch	chain
slst	slip stitch
sc	single crochet
dc	double crochet
hdc	half double crochet
inc	increase
dec	decrease

---

**Crochet pattern, illustrations, text and design by Lillit Mroz.**

This crochet pattern is for personal use only.

This pattern, or parts of it, may not be published, changed, shared or sold.  
The amigurumi/crocheted doll is for personal use only and may not be sold.

Photos of the amigurumi/crocheted doll may be published,  
if the originator is mentioned:

**Lillit Mroz // @datpilz**

# MATERIAL

Here you can find a list of the yarn I used for this pattern. You don't have to use exactly the same wool or exactly these brands. The list is only for your orientation.

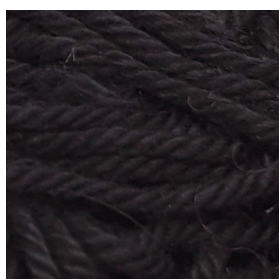
## Rödel Allround



## ONline Linie 14 CAMMINO



## Lana Grossa Cotone



# TOTORO

Final size: 6 cm/2.4 inch

---

## MATERIAL

---

**YARN (125m/50g)**  
grey, nature, black

**SEWING THREAD**  
white

**OTHER**  
crochet hook 2.5 mm, fiberfill,  
liquid glue, keychain

**FELT**  
white, black



## HEAD AND BODY

*use grey yarn*

---

Leave a long tail at the beginning if you want to attach a keychain later.

- R1:** work 6 sc in a ring  
**R2:** inc 6 = 12 sts  
**R3:** 6x [sc, inc] = 18 sts  
**R4:** sc 18  
**R5:** sc 8,  
2x [3 sc in 1 st],  
sc 8 = 22 sts

Use the yarn tail from the beginning to attach the keychain at the middle of the head.



- R6:** sc 4, inc,  
sc 12,  
inc, sc 4 = 24 sts  
**R7:** sc 24  
**R8:** inc,  
sc 22,  
inc = 26 sts  
**R9:** sc 11,  
dec 2,  
sc 11 = 24 sts  
**R10:** 6x [sc 3, inc] = 30 sts  
**R11-**  
**R15:** sc 30

**R16:** 6x [sc 3, dec] = 24 sts

**R17:** 6x [sc 2, dec] = 18 sts

**R18:** 6x [sc, dec] = 12 sts

- stuff Totoro with fiberfill

**R19:** dec 6 = 6 sts

- Fasten off and leave a long tail to sew the open end together.
- Embroider the nose with black yarn at height of **round 5** and at the point where you crocheted 2x [3 sc in 1 st].



## BELLY

*use nature yarn*

---

- R1:** work 6 sc in a ring  
**R2:** inc 6 = 12 sts  
**R3:** 6x [sc, inc] = 18 sts  
**R4:** slst 1

- Fasten off and leave a long tail for sewing.



- Sew the belly to the front of the body.
- Use grey yarn and embroider three /\ on the belly.



### **EARS** (make 2)

*use grey yarn*

- R1:** work 4 sc in a ring
- R2:** 2x [inc, sc] = 6 sts
- R3:** 2x [inc 2, sc] = 10 sts
- R4:** 2x [dec 2, sc] = 6 sts
- R5:** slst 1

- Fasten off and leave a long tail for sewing.
- If you want you can stuff the ears slightly with fiberfill.
- Sew the ears to the head.



### **TAIL**

*use grey yarn*

- R1:** work 4 sc in a ring
- R2:** 2x [inc, sc] = 6 sts
- R3:** 2x [inc 2, sc] = 10 sts
- R4:** sc 10
- R5:** 2x [dec, sc 3] = 8 sts
- R6:** slst 1

- Fasten off and leave a long tail for sewing.
- Stuff the tail slightly with fiberfill and sew it to the back of the body.



## LEGS (make 2)

*use grey yarn*

---

**R1:** work 6 sc in a ring

**R2:** sc 2, inc 2, sc 2 = 8 sts

**R3:** sc 2, inc 4, sc 2 = 12 sts

**R4:** slst 1

- Fasten off and leave a long tail for sewing.
- Sew the legs to the bottom side of the body.



## ARMS (make 2)

*use grey yarn*

---

**R1:** work 4 sc in a ring

**R2:** 2x [inc, sc] = 6 sts

**R3:** 2x [inc, sc 2] = 8 sts

**R4:** slst 1

- Fasten off and leave a long tail for sewing.
- Sew the arms to the side of the belly to the body.



## EYES

---

- Cut two circles from white felt for the eyes.



*Eye Template*

- Glue small circles of black felt to the eyes for the pupils.  
(I use a belt punch to "cut" the small circles from felt.)



- Pull the yarn through Totoro at the point where the whisker should be. The end of the thread should be nice and stable due to the dried glue and should look out.



## WHISKERS

*use black yarn*

- Thread a black yarn thread on a sewing needle.
- Cover one end of the yarn thread with glue and let it dry.



- Hide the rest of the yarn thread.
- Attach the rest of the whiskers in the same way.





**CONGRATS!**  
**YOUR TOTORO IS DONE!**



# CHUU-TOTORO

Final size: 6 cm/2.4 inch

---

## MATERIAL

---

### YARN (125m/50g)

blue, white, black

### SEWING THREAD

white

### OTHER

crochet hook 2.5 mm, fiberfill,  
liquid glue, keychain

### FELT

white, black



## HEAD AND BODY

*use blue yarn*

---

Make the body as described on **page 1** and embroider the nose with black yarn.

## BELLY

*use white yarn*

---

Make the belly as described on **page 1 and 2**, sew it to the body and embroider the  $\wedge$  with blue yarn.



## EARS (make 2)

*use blue yarn*

---

- R1:** work 4 sc in a ring
- R2:** 2x [inc, sc] = 6 sts
- R3:** 2x [inc, sc 2] = 8 sts
- R4:** sc 8
- R5:** slst 1

- Fasten off and leave a long tail for sewing.
- If you want you can stuff the ears slightly with fiberfill.
- Sew the ears to the head.



## TAIL

*use blue yarn*

---

Make the tail as described on **page 3** and sew it to the body.

## LEGS (make 2)

*use blue yarn*

---

Make the legs as described on **page 4** and sew them to the body.



## **ARMS** (make 2)

*use blue yarn*

---

Make the arms as described on **page 4** and sew them to the body.

## **EYES**

---

Make the eyey as described on **page 4 and 5** and sew them to the face.



**CONGRATS!**  
**YOUR CHUU-TOTORO IS DONE!**





# CHIBI-TOTORO

Final size: 3.5 cm/1.4 inch

---

## MATERIAL

---

**YARN (125m/50g)**  
white, pink

**SEWING THREAD**  
white

**OTHER**  
crochet hook 2.5 mm, fiberfill,  
liquid glue, keychain

**FELT**  
white, black



## EAR 1

*use white yarn*

---

**R1:** work 4 sc in a ring

**R2:** 2x [inc, sc] = 6 sts

**R3:** 2x [inc, sc 2] = 8 sts

**R4:** sc 8

- Fasten off and leave a long tail.  
(You'll need the yarn tail to attach the keychain later.)



## EAR 2

*use white yarn*

---

**R1:** work 4 sc in a ring

**R2:** 2x [inc, sc] = 6 sts

**R3:** 2x [inc, sc 2] = 8 sts

**R4:** sc 8

**In the next round EAR 1 and EAR 2 will be crocheted together.**

- R5:** crochet in the stitches of EAR 1:  
sc 8,  
crochet in the stitches of EAR 2:  
sc 8 = 16 sts



- You can use the yarn tail from EAR 1 to close the gap between EAR 1 and EAR 2 and to attach the keychain.



**R6:** 4x [sc 3, inc] = 20 sts

**R7-**

**R8:** sc 20

**R9:** 4x [sc 4, inc] = 24 sts

**R10-**

**R12:** sc 24

**R13:** 6x [sc 2, dec] = 18 sts

**R14:** 6x [sc, dec] = 12 sts

- stuff Chibi-Totoro with fiberfill

**R15:** dec 6 = 6 sts

- Fasten off and leave a long tail to close the open end.



## FEET

*use pink yarn*

- Embroider the feet on the bottom side of the body.



## EYES

- Cut two circles from white felt for the eyes.



*Eye Template*

- Glue small circles of black felt to the eyes for the pupils. (I use a belt punch to "cut" the small circles from felt.)



**CONGRATS!**  
**YOUR CHIBI-TOTORO IS DONE!**



♥13♥

© Lillit Mroz // datpilz