



University of World-wide Renown and Splendor for Years into the Future



# Admission Information for International Students

2022

# CONTENTS

<b>Outline of HU</b>	<b>P3</b>
<b>Schools, Graduate Schools</b>	<b>P4</b>
<b>Undergraduate Programs</b>	<b>P5</b>
<b>Graduate Programs</b>	<b>P7</b>
<b>Research Students</b>	<b>P8</b>
<b>International Admissions Office (IAO)</b>	<b>P9</b>
<b>Expenses</b>	<b>P11</b>
<b>Scholarship System</b>	<b>P12</b>
<b>Accommodation Facilities</b>	<b>P13</b>
<b>Student Voice</b>	<b>P16</b>
<b>Contact Information</b>	<b>P17</b>

## Introduction of HIROSHIMA

Hiroshima is located in the Chugoku region of western Japan. It has 2 World Heritage sites, Hiroshima Peace Memorial and Itsukushima Shinto Shrine.

Since large scale disasters are relatively few and living costs can be kept lower than in big cities, students in Hiroshima can concentrate on their studies without having to worry.



# Outline of Hiroshima University

Hiroshima University is a national institution founded in 1949, incorporating many different institutions of higher education.

The university has been growing ever since; adding new schools, research institutes, and centers.

Today it is counted among the national universities and consists of 12 schools, 4 graduate schools, a research institute, research facilities, and an affiliated hospital.

The university has approximately 11,000 undergraduate students and 4,500 graduate students currently enrolled, as well as 1,638 international students from 84 different countries and regions.

Today, HU is making steady progress as a global university, taking on worldwide challenges and strengthening its global educational network by signing international exchange agreements with universities around the world and opening overseas bases in strategic locations.

## Hiroshima University in Numbers

(As of May, 2022)

Undergraduate Students: **10,603**

Graduate Students: **4,463**

Research / Special Auditing Students etc.: **524**

Faculty and Staff Members: **3,579**

International Inter-University Agreements:

**347** Institutes in **55** Countries/Regions

International Inter-Departmental Agreements:

**366** Institutes in **51** Countries/Regions



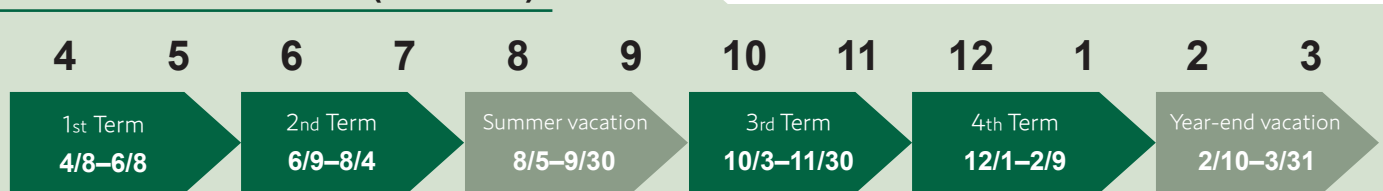
## Student Life

Hiroshima University has several international student organizations by various countries/regions. They conduct a variety of activities like interacting with the locals, events, etc.



Various kinds of international exchange events are held. In addition to exchange events among students, HU conducts events for students and locals to interact with each other

## Academic Calendar (FY 2022)



### April

- Spring vacation
- Entrance ceremony
- Orientation event

### June

- Phoenix concert

### July

- Yukata festival

### August

- Open campus

### September

- Autumn term commencement ceremony

### October

- Autumn term entrance ceremony
- Phoenix long distance relay marathon

### November

- University festival/Kasumi festival
- Homecoming day

### December-January

- Winter vacation

### March

- Degree commencement ceremony



## Schools and Departments (Clusters, Courses, Programs) at the Undergraduate Level

School	Department (Cluster, Course, Program)
Integrated Arts and Sciences	Integrated Arts and Sciences, Integrated Global Studies (IGS)
Letters	Humanities
Education	Cluster 1: School Education, Cluster 2: Science, Technology and Society Education Cluster 3: Language and Culture Education, Cluster 4: Life-long Activities Education Cluster 5: Fundamentals for Education and Human Development
Law	Law
Economics	Economics
Science	Mathematics, Physics, Chemistry, Biological Science, Earth and Planetary Systems Science
Medicine	Medicine, Health Sciences
Dentistry	Dentistry, Oral Health Sciences
Pharmaceutical Sciences	Pharmaceutical Sciences, Medicinal Sciences
Engineering	Cluster 1: Mechanical Systems, Transportation, Material, and Energy Cluster 2: Electrical, Electronic, and Systems Engineering Cluster 3: Applied Chemistry, Biotechnology and Chemical Engineering Cluster 4: Civil Engineering and Architecture
Applied Biological Science	Applied Biological Science
Informatics and Data Science	Informatics and Data Science

## Graduate Schools and Major (Programs)

Graduate School	Major (Programs)
<b>Humanities and Social Sciences</b>	<b>Humanities and Social Sciences:</b> Humanities / Psychology / Law and Politics / Economics / Management Sciences / International Peace and Co-existence / International Economic Development / Integrated Arts and Human Sciences <b>Educational Sciences:</b> Educational Design for Teacher Educators / Educational Studies / Teaching Japanese as a Second Language / International Education Development <b>Professional Development for Teachers and School Leaders</b> <b>Law School</b> <b>Joint International Master's Programme</b>
<b>Advanced Science and Engineering</b>	<b>Advanced Science and Engineering:</b> Mathematics / Physics / Earth and Planetary Systems Science / Chemistry / Applied Chemistry / Chemical Engineering / Electrical, Systems, and Control Engineering / Mechanical Engineering / Transportation and Environmental Systems / Architecture / Civil and Environmental Engineering / Informatics and Data Science / Quantum Matter / Transdisciplinary Science and Engineering / Smart Innovation <b>Joint International Master's Programme</b>
<b>Integrated Sciences for Life</b>	<b>Integrated Sciences for Life:</b> Biotechnology / Food and AgriLife Science / Bioresource Science / Life and Environmental Sciences / Basic Biology / Mathematical and Life Sciences / Biomedical Science
<b>Biomedical and Health Sciences</b>	<b>Doctoral: Biomedical Sciences:</b> Medicine / Dental Sciences / Pharmaceutical Sciences / Radiation Biology and Medicine <b>Master's: Integrated Health Sciences:</b> Health Sciences / Medicinal Sciences / Public Health / Medical Physicist / Biomedical Science <b>Doctoral: Integrated Health Sciences:</b> Health Sciences / Medicinal Sciences / Biomedical Sciences
<b>Innovation and Practice for Smart Society</b> (to be established in April 2023)	<b>Master's Course</b> <b>Doctoral Course</b>

## The World-Leading Innovative Graduate Education Programs

**Phoenix Leader Education Program (Hiroshima Initiative) for Renaissance from Radiation Disaster**

<https://phoenixprogramlp.hiroshima-u.ac.jp/en>

**TAOYAKA Program for Creating a Flexible, Enduring, Peaceful Society**

<https://taoyaka.hiroshima-u.ac.jp/english/>

**The Frontier Development Program for Genome Editing**

<https://genome.hiroshima-u.ac.jp/en/>

## General Information about Undergraduate Programs

Please refer to the following information if you are interested in studying an undergraduate program at Hiroshima University. As for the Department of Integrated Global Studies (IGS), School of Integrated Arts and Sciences, all classes are taught in English. On the other hand, other undergraduate programs are mostly offered in Japanese. Applicants should note that it is essential to acquire good Japanese ability, in which they are capable of responding appropriately to the instruction, before their admission.

### Regular Courses

Regular courses of study are for a duration of 4 years. However, the Program of Medicine of the School of Medicine, the Program of Dentistry of the School of Dentistry, and the Program of Pharmaceutical Sciences of the School of Pharmaceutical Sciences, are for a duration of 6 years. Acquisition of required credits entitles the student to a Bachelor degree.

There are two main ways to enroll in regular courses: **1. The General Entrance Exam (same exam administrated to Japanese students)** and **2. Entrance Examination for International Applicants (exam for international students)**. Please choose one exam for the school of your choice.

Some of the schools offer a “Comprehensive type of exam [I/II type, International Baccalaureate type, IGS type (overseas/domestic exam) (\*)]”.

(\*) Entrance examination for Department of Integrated Global Studies (IGS), School of Integrated Arts and Sciences

[https://www.hiroshima-u.ac.jp/nyushi/yoko\\_doga/yoko](https://www.hiroshima-u.ac.jp/nyushi/yoko_doga/yoko) (Japanese text only)

Regarding the “Exam for university transfer as a 3rd-year student”, please refer to the following URL and the website of the school concerned for further information.

[https://www.hiroshima-u.ac.jp/nyushi/gakubu/gakubu\\_hennyu](https://www.hiroshima-u.ac.jp/nyushi/gakubu/gakubu_hennyu) (Japanese text only)

The admission date for regular students is April (at the beginning of each academic year)

## 1. The General Entrance Exam

<b>Application Eligibility</b>	<p>Applicants must satisfy any one of the following and have taken the Common Test for University Admissions for year 2023 as specified by each respective faculty or department.</p> <ol style="list-style-type: none"><li>(1) Graduation or expected graduation from an upper secondary (senior high) school by March 31, 2023.</li><li>(2) Completion or expected completion of 12 years of regular curricular studies by March 31, 2023.</li><li>(3) Attainment of any other qualification recognized as equivalent or superior to one of the two requirements above by article 150 in Ordinance for Enforcement of the School Education Act, MEXT*, Japan by March 31, 2023.</li></ol> <p>(Ex1) Completion of 12 years of formal education abroad, expected completion by March 31, 2023 or recognition by MEXT*, Japan, as having completed the equivalent education.</p> <p>(Ex2) Students possessing international qualifications such as the International Baccalaureate, the German Abitur, the French Baccalaureate and GCE A qualifications.</p> <p>*MEXT: Ministry of Education, Culture, Sports, Science and Technology</p> <p>For detailed information, please see the application guidelines.</p>
<b>Selection</b>	<p>Please refer to the each faculty's homepage for their “Admission Guidebook for General Selection” for detailed information on subjects and courses on offer, as well as descriptions for the criteria used to determine pass or fail.</p>
<b>Inquiries</b>	<ol style="list-style-type: none"><li>(1) For details on the Common Test for University Admissions, including the application period and the examination dates, please refer to the website of the National Center for University Entrance Examinations. <a href="https://www.dnc.ac.jp/">https://www.dnc.ac.jp/</a> (Japanese text only) 2-19-23 Komaba, Meguro-ku, Tokyo 153-8501 Tel: +81-3-3465-8600</li><li>(2) Applications for the General Entrance Exam will be accepted in late January to early February for the examination given in February (B term) and in March (C term). Not every faculty and department conduct the entrance examination for the C Term. Please check the General Exam Guidelines for details. <b>The General Exam Guidelines are available at the following website. No printed version is available.</b> <a href="https://www.hiroshima-u.ac.jp/nyushi/yoko_doga/yoko">https://www.hiroshima-u.ac.jp/nyushi/yoko_doga/yoko</a> (Japanese text only) Office of Admissions, Hiroshima University 1-3-2 Kagamiyama, Higashi-Hiroshima, 739-8511 Email: nyusi-group@office.hiroshima-u.ac.jp</li></ol>

## 2. Entrance Examination for International Applicants (The Exam for International Students)

### Application Eligibility

Applicants must fulfill the following 3 requirements.

1. Applicants must have a nationality other than Japanese.
2. Applicants must take the "Examination for Japanese University Admission for International Students in 2022 (EJU)" and the "Designated Official English Proficiency Test". (Compulsory subjects in EJU vary with each school.)
3. Applicants must satisfy any one of the following conditions.
  - (1) Persons who have completed, or who are expected to complete 12 years of school education in a country other than Japan by March 31, 2023 or those possessing equivalent academic qualifications specified by MEXT\*, Japan.
  - (2) Persons who have obtained, or who are expected to obtain by March 31, 2023, the International Baccalaureate qualification granted by the International Baccalaureate Organization, which is a foundation established in accordance with the Swiss Civil Code.
  - (3) Persons who have obtained, or who are expected to obtain by March 31, 2023, the Abitur certificate, recognized as the qualification for admission into a university by the Federal Republic of Germany.
  - (4) Persons who have obtained, or who are expected to obtain by March 31, 2023, the Baccalaureate diploma, recognized as the qualification for admission into a university by the Republic of France.
  - (5) Persons who have obtained, or who are expected to obtain by March 31, 2023, the General Certificate of Education Advanced Level (GCE A Level), recognized as the qualification for admission into a university by the United Kingdom of Great Britain and Northern Ireland.
  - (6) Persons who have completed, or who are expected to complete, a 12-year education curriculum by March 31, 2023 in a school accredited by the Western Association of Schools and Colleges (WASC), the Association of Christian Schools International (ACSI), the New England Association of Schools and Colleges (NEASC) or the European Council of International Schools (CIS), which are international school associations designated by MEXT\*, Japan.
  - (7) Persons who have been recognized through an individual review by Hiroshima University as being equivalent to or higher than a high school graduate in scholastic activity, and will be at least 18 years old by March 31, 2023.

\*MEXT: Ministry of Education, Culture, Sports, Science and Technology

Applicants must fulfill the designated requirements of each school.

Note: Applicants must submit an official score from one of the designated official English Proficiency Tests listed below.

(Please refer to the Exam Guidelines for International Students for details.)

Cambridge English, EIKEN, GTEC (CBT Type Only), IELTS™ (Academic Module), TEAP (4skills), TEAP CBT (4skills),

TOEFL iBT®, TOEIC® Listening & Reading Test, TOEIC® Speaking & Writing Tests

### Selection

For details of examination subjects, acceptance and rejection criterion, etc., please refer to the Exam Guidelines for International Students. The examination for the Department of Integrated Global Studies (IGS), School of Integrated Arts and Sciences will be given in July and February. Please refer to the following URL for details. <https://www.hiroshima-u.ac.jp/en/igs/admissions>

### Inquiries

- (1) For details about the Examination for Japanese University Admission for International Students (EJU), including the application period and the examination dates, please refer to the following website.

<https://www.jasso.go.jp/en/eju/index.html> 4-5-29 Komaba, Meguro-ku Tokyo, 153-8503 Tel: +81-3-6407-7457

- (2) Applications for the Entrance Examination are accepted from late December to early January for the examination given in February (B term) and in March (C term). Not every school and department conduct the entrance examination for the C term. Please check the Exam Guidelines for details. The Exam Guidelines for International Students are available at the following website. No printed version is available.

[https://www.hiroshima-u.ac.jp/nyushi/yoko\\_doga/yoko](https://www.hiroshima-u.ac.jp/nyushi/yoko_doga/yoko) (Japanese text only)

Office of Admissions, Hiroshima University

1-3-2 Kagamiyama, Higashi-Hiroshima 739-8511 Email: [nyusi-group@office.hiroshima-u.ac.jp](mailto:nyusi-group@office.hiroshima-u.ac.jp)

## Application for the Exams

### Procedure for Online Application

Step 1 Register as a member of UCARO.

Step 2 **Enter the required information** on the website.

Step 3 Upload a photo.

Step 4 **Pay the entrance examination fee.** (Applicants who want your examination score to be disclosed must pay ¥300 extra) (Credit card payments will be accepted.)

Step 5 Upload the required documents. (Application documents that the faculty or department allows to be sent by mail, may be submitted with either method)

Step 6 **Send the necessary documents (transcript etc.) by post.** (In some cases, online submissions are allowed.)

<Note>

Without completing all 6 steps, the application procedure will not be completed. The required documents must be sent by registered express mail (DHL, FedEx, OCS, EMS etc. when shipping from outside of Japan) by the application deadline.

All dates and times in the exam guidelines are Japan Standard Time.

Website "Admissions" <https://www.hiroshima-u.ac.jp/nyushi/> (Japanese text)

For details, please refer to the Application Guidelines for "The General Entrance Exam" or "Entrance Examination for International Applicants" (WEB version).

## General Information of Graduate Schools

There are two main programs offered in the graduate school: one is open to candidates for Master's Degrees and the other for Doctoral Degrees. The amount of time it takes to earn a degree, admission qualifications, general application procedures, and so on, are outlined below.

Admission procedures and requirements differ slightly depending on the program, and there are some programs that make special selections for international students. Applicants wanting more details should enquire at the support office. A list of such offices and their addresses can be found on page 18.

### Regular Courses for Graduate Degrees

**Master's Degrees** are normally awarded to students if they have satisfied the following requirements: at least 2 years in the Master's Program, acquisition of the required course credits in their graduate school, an acceptable master's thesis written under the guidance of a faculty member, and passing a final comprehensive examination.

Main Application Eligibility for Master's Programs (excerpts from Application Guide for Admissions)

Applicants must meet one of the following stipulations before the expected admission day:

- A person who graduated university.
- A person who has completed 16 years of formal schooling in a foreign country.
- A person 22 years old or older, recognized by our graduate school as having academic ability equivalent or superior to that of a university graduate.
- A person who has attended a university for at least three years, (including a person who has been specially selected by the Minister of Education, Culture, Sports, Science and Technology), and has been recognized by our graduate school as having achieved excellent grades.

(For the full list, please contact the support office. (See page 16))

**Doctorate Degrees** are awarded to students if they have satisfied the following requirements: at least 3 years in the doctoral program, acquisition of the required course credits in their research graduate school, an acceptable doctoral dissertation written under the guidance of a faculty member, and passing a final comprehensive examination.

In the Graduate School of Biomedical and Health Sciences (Division of Biomedical Sciences), there is no Master's program; only the doctoral program is available. A minimum of 4 years residence is required.

**Main Application Eligibility for Doctoral Programs (excerpts from Application Guide for Admissions)**

Applicants must meet one of the following stipulations before the expected admission day:

- A graduate of a master's or professional degree.
- A person who has received a degree certificate equivalent to a master's or a professional degree in a foreign country.
- A person 24 years or older, recognized as having academic ability equivalent or superior to that of a master's or professional program by individual qualification screening at our graduate school.

**Main Application Eligibility for the Division of Biomedical Sciences, Graduate School of Biomedical and Health Sciences**

Applicants must meet one of the following stipulations before the expected admission day:

- Those who have completed the maximum number of years needed for completion of a 6-year curriculum in medicine, dentistry, pharmaceutical science, or veterinary medicine at the faculties of medicine, dentistry, pharmaceutical science, or veterinary medicine of a university.
- Those who have completed an 18-year school curriculum education program (with the last field of study being medicine, dentistry, pharmaceutical science, or veterinary medicine) in an overseas country.
- Those who are recognized by the Graduate School as having academic ability equivalent or superior to those who have graduated from a university, and who have reached 24 years of age (such recognition is made on a case-by-case basis and is based on the qualifications of each applicant)

(For the full list, please contact the support office. (See page 16))

#### Selection

Applicants wishing to be admitted into either the Master's or Doctoral program must take the entrance examination. They are screened through a written examination, an oral test, and submitted documents.



## General Information of Non-Degree Courses (Research Students)

Applicants wishing to study a specific subject, at either the undergraduate or graduate level, may be admitted as research students ("kenkyusei"). **Research students are not entitled to degrees upon completion of their research work.** Most applicants for admission to a graduate school gain admission to the University as a research student first, and then prepare for the entrance examination to the graduate school of their choice while researching their subject in more detail.

Admission procedures and requirements for research students may differ slightly according to each school/graduate school. Applicants who would like more details are advised to enquire at the support office of the school/graduate school. Please refer to a list of the offices, including their addresses, on page 17 to 19.

<b>Application Eligibility</b>	<p>[Admission to Schools, Centers and Facilities]</p> <ul style="list-style-type: none"> <li>(1) Completion of 14 years of formal education in a foreign country.</li> <li>(2) Graduation from a university, or a junior college in Japan ("tanki daigaku": a school which offers 2 or 3 years of curriculum-based learning in Japan), after having completed 12 years of education in a foreign country.</li> <li>(3) Recognition by Hiroshima University as having the equivalent qualifications to that of a research student.</li> </ul> <p>[Admission to Graduate Schools]</p> <ul style="list-style-type: none"> <li>(1) Completion of 16 years of formal education in a foreign country.</li> <li>(2) Recognition by the graduate school of Hiroshima University as having the equivalent qualifications to that of a research student.</li> </ul>
<b>Required Documents</b>	<p>Those wishing to study as a research student must submit the following documents to the school/graduate school concerned and pay the application fee (¥9,800.)</p> <p>Deadline: Applicants residing in Japan - 30 days before the start date of their research          Applicants residing abroad - 4 months before the start date of their research</p> <ul style="list-style-type: none"> <li>(1) Application Forms (prescribed forms)</li> <li>(2) Curriculum Vitae (prescribed forms)</li> <li>(3) Graduation certificate and transcript of scholastic record issued by the university/college attended</li> <li>(4) Letter of Recommendation from the President, the Dean of the faculty or academic supervisor at the university/college attended</li> <li>(5) Copy of residence certificate, copy of certificate of items stated in resident registers or residence card which contain the applicant's status of residence (this applies only to applicants currently residing in Japan.)</li> <li>(6) Copy of passport (This applies only to those who are currently residing outside of Japan.)              In the case of not having a passport, formal documents that prove the applicant's nationality will be required.</li> </ul> <p>※ The required documents may vary depending on the school or program.          Applicants must check the application guide of schools/programs concerned.</p>
<b>Selection</b>	<p>Selection will be made on the basis of the documents submitted.</p>
<b>Admission</b>	<p>Admission for non-degree students is at the beginning of each semester in April and October.</p>
<b>Research Period</b>	<p>In general, research students are admitted for one semester or one year. They may apply for a renewal of this period if necessary for the purpose of their studies.</p>
<b>Others</b>	<ul style="list-style-type: none"> <li>(1) Research progress will be monitored by means of a record written by the research student which depicts specific study/research contents using the format of a "Monthly Research Report" etc.</li> <li>(2) Admission for research will be canceled if a research student attends Hiroshima University and doesn't pay their research fees within 3 months.</li> </ul>





## International Admissions Office (IAO)

Applicants living abroad who wish to enroll as regular graduate students through the entrance examination for international applicants, or as research students, are generally required to register with Hiroshima University International Admissions Assistant System (IAAS) before the application process.

\*Some graduate schools and programs do not require IAAS registration, so please check with the IAO first.

([iao-contact@hiroshima-u.ac.jp](mailto:iao-contact@hiroshima-u.ac.jp))

\*IAO ··· Contact point for applicants who wish to study at Hiroshima University

\*IAAS ··· Support system operated by IAO "toward initiating contact with their desired academic supervisor".

## Registration Process

### < By 6 months before the application period >

- Gather information on the graduate school you want to apply to [Reference] [HU Graduate Schools List](#)
- \*Check the application period in the admission guide, etc. [Reference] [Researcher Directory](#)
- Search for information on your preferred supervisors and decide the graduate school



### < By 3 months before the application period >

- (1) Make an account for the IAAS (<https://www.iao.hiroshima-u.ac.jp/>)
- (2) Fill in the required information including the graduate school, program, and preferred supervisor using the IAAS and upload the required documents.



### < After submission of the documents >

※ IAO informs you of the results in about 2-4 weeks.

- (3) The IAO sends you a notification with the contact availability of your preferred supervisor
- (4) If "available" to start contact, start direct communication with your preferred supervisor



### < After completion of the communication with the supervisor >

- (5) Receive the result on acceptance or rejection of your application from the International Admissions Office
- \*When you are accepted as a research student or approved to apply as a regular student, the IAO will send you an "Approval Number".



### < After receipt of the result from the IAO >

- (6) Apply based on the application guidelines of your preferred graduate school (online application)  
<https://www.webshutsugan.com/hiroshima-u-en/portal/top/>  
(If you do not need to register with the IAAS and communicate directly with the support office or supervisor, you do not need to enter the "Approval Number".)

## Required documents

### < Required for all registrants >

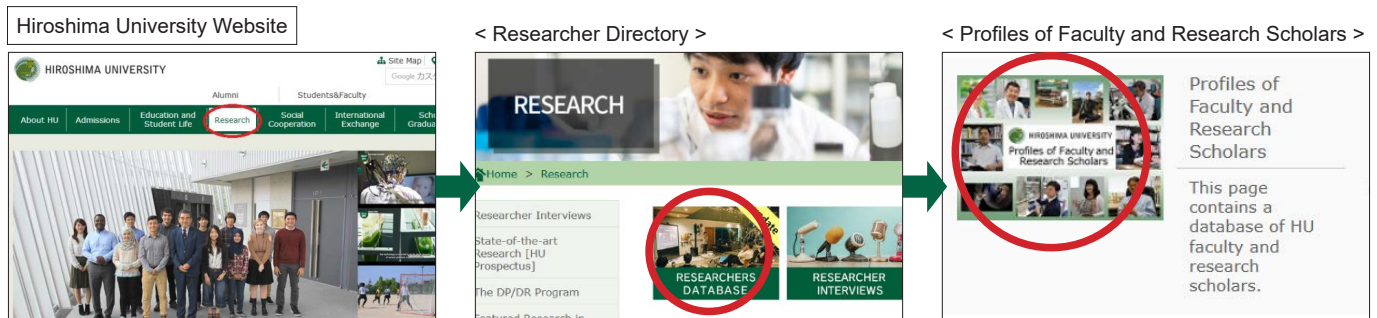
1. Statement of Purpose
2. CV (free format)
3. ID photo
4. Transcripts
5. Certificate of Graduation/Completion (Certificate of expected graduation/completion)
6. Language Proficiency Certificate (TOEFL, TOEIC, IELTS, etc. for English, JLPT, etc. for Japanese)

### < Graduates of universities in mainland China >

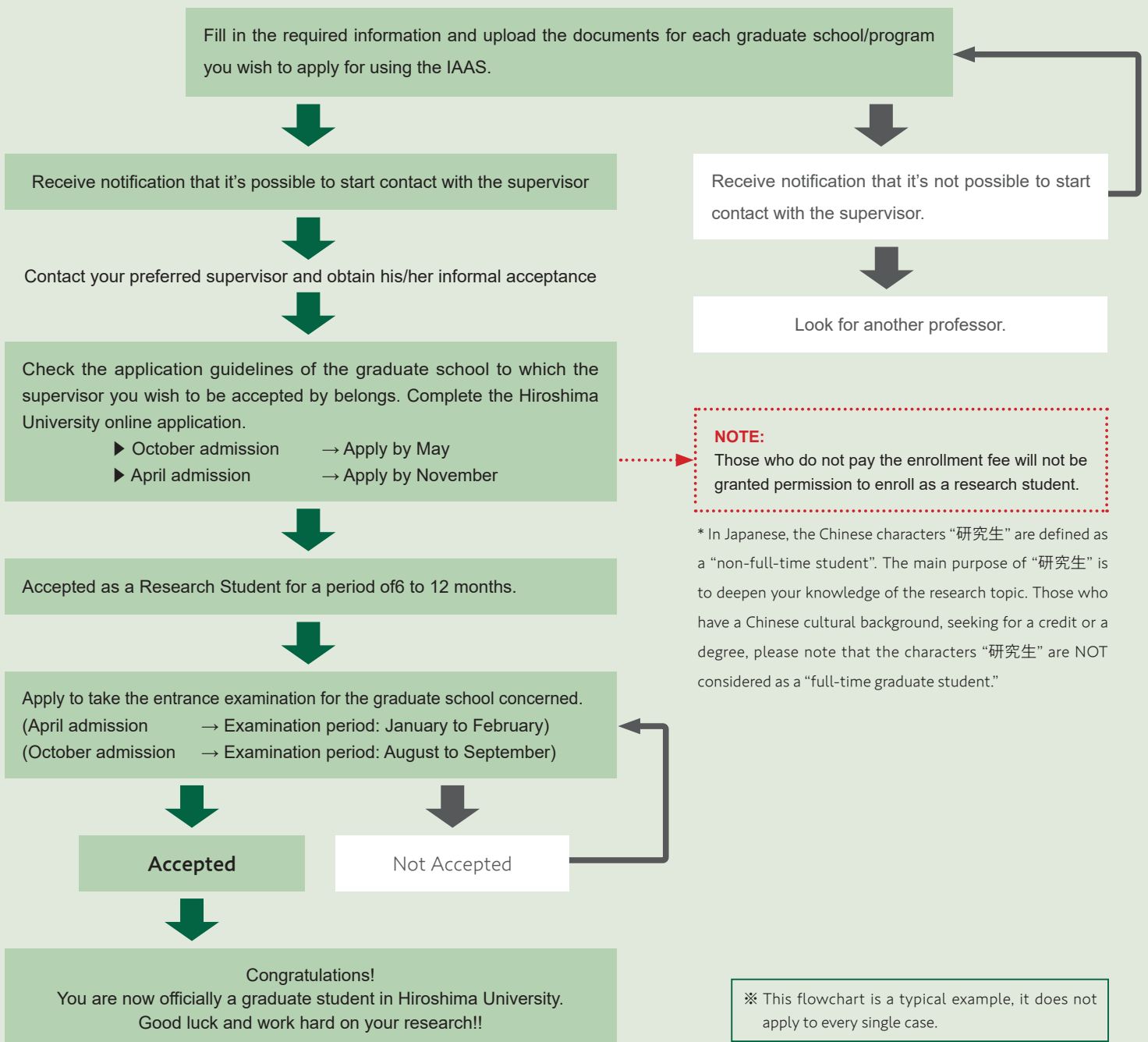
- 教育部学历证书电子注册备案表
- 毕业证书
- 学士（硕士）学位证书
- 教育部学籍在线验证报告
- 毕业预定证书

# Flowchart for Entering Hiroshima University as a Graduate Student (EXAMPLE)

Look for a professor who studies an area or areas of your interest through Hiroshima University website, etc. (Please refer to "Researcher Directory")



Please enter some keywords related to your research field and click the "Search" button.



## Required Admission Expenses

### Fees

Expenses for entering the university include entrance examination, enrollment, and tuition fees:

(As of April 2022)

Status		Application Fee	Enrollment Fee	Tuition
Undergraduate Student		¥ 17,000	¥ 282,000	¥ 535,800 (per year)
Graduate Student	Master's Program	¥ 30,000	¥ 282,000	¥ 535,800 (per year)
	Doctoral Program	¥ 30,000	¥ 282,000	¥ 535,800 (per year)
Research Student (Non-Degree) *		¥ 9,800	¥ 84,600	[Research Fees] ¥ 29,700 (per month)

(In the case that tuition fees are revised, outstanding fees must be paid at the revised rate.)

\*Research fees are to be paid in a lump-sum of 6 months. Admission for a research student will be canceled if they fail to pay their research fees within 3 months after admission.

### Exemption/Deferment System

System	Enrollment Fee Exemption/Deferment	Tuition Fee Exemption
Eligible person	Students who have difficulties paying enrollment fees due to financial circumstances (※Not applicable to research students)	Students with financial difficulties who are unable to pay tuition fees (※Not applicable to research students)
Details	Enrollment fees can be exempted or the payment period can be extended	The tuition fee can be waived completely, or reduced to half price

For more information, please visit our website. <https://momiji.hiroshima-u.ac.jp/momiji-top/en/life/financial.html>

### Living Expenses

The average monthly living expenses (including school expenses) of international students are as follows:

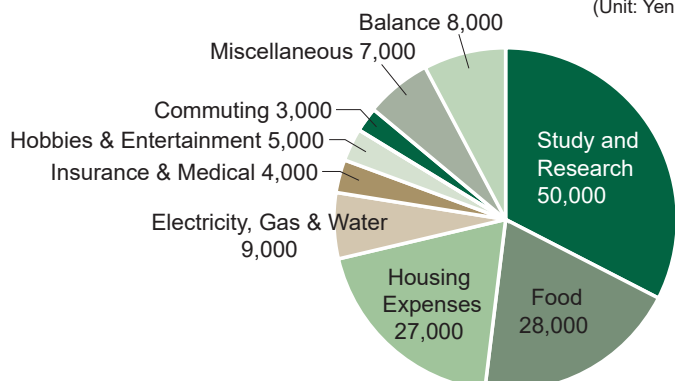
Average monthly expenses of international students by region

(Unit: Yen)

Region	Kanto (Tokyo etc.)	Kinki (Osaka etc.)	Chugoku (Hiroshima etc.)	National Average
Monthly expenses (Higher education institution)	174,000	156,000	142,000	158,000

Average monthly expenses (Itemized list of Chugoku Region)

(Unit: Yen)



Source: "Lifestyle Survey of Privately Financed International Students 2021" by JASSO, published in September., 2022

Cafeterias



There are 9 cafeterias/coffee shops in the Higashi- Hiroshima Campus, 2 of which also provide a Halal menu.

## Scholarship System for International Students

Below are the main types of scholarships for international students. However, please prepare sufficient funds before coming to Japan because the number of grantees is limited.

### Hiroshima University's Scholarship Programs

Hiroshima University offers some special scholarship programs for international students.

System	HU International Students Support Fund	Excellent Student Scholarship Program	Prior to Admission Scholarship Program (HU-PASP)
Details	Scholarship established with internal and external donations. (under consideration)	Hiroshima University's scholarship program for outstanding graduate students in academic record and activities.	Grantees will be selected from the students enrolled by pre-arrival admission system*. *A system in which students can sit the entrance exam outside of Japan
Contents of Awards	(under consideration)	Certificate of Commendation Souvenir Gift Full Exemption of Tuition Fees for Fall Semester	Monthly Stipend: 50,000 yen Grant: Tuition Fees Exemption Duration: 1 year Number of Grantees: 4 students

### Japanese Government (MEXT) Scholarships

There are two different categories for the Japanese Government Scholarship: recommendation by Japanese Embassy or recommendation by University.

	Recommendation by Japanese Embassy	Recommendation by University
Details	On behalf of the Ministry of Education, Culture, Sports, Science and Technology (MEXT), Japanese Embassies abroad make announcements regarding applications for MEXT scholarships. They also conduct the preliminary screening of applicants based on documents received, written tests, and interviews. On the basis of recommendations by Japanese embassies, MEXT makes the final selection of scholarship recipients.	<b>Students Wishing to Enter the University from Abroad:</b> The University recommends to MEXT a certain number of exceptional students from abroad. MEXT makes the final selection of scholarship recipients.
Inquiry	Your nearest Japanese Embassy	The support office of the school/graduate school (on page 17 to 19) which you wish to enroll in.

### Scholarships from Private Organizations

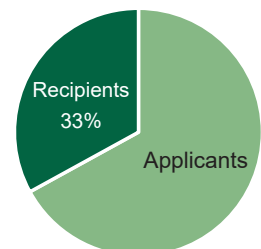
About 40 private organizations provide scholarships to privately funded international students. Each year, approximately 230 students receive the grants. These scholarships are only for self-funded students already enrolled in Hiroshima University. Applicants for university enrollment are ineligible to apply. Students who wish to apply for this kind of scholarship must apply in accordance with the application guide of each organization.

<https://momiji.hiroshima-u.ac.jp/momiji-top/en/international/privatelyfunded.html>

The Japan Student Services Organization (JASSO) also provides scholarship information.

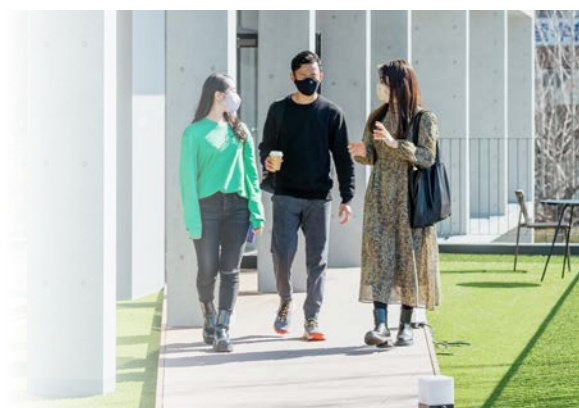
[https://www.jasso.go.jp/en/study\\_j/scholarships/index.html](https://www.jasso.go.jp/en/study_j/scholarships/index.html)

Percentage of recipients



#### Outline of Application for Scholarships Offered by Private Organizations

Eligibility	Resident Status "Student". Other requirements vary according to organization.
Duration	Varies from one year to a standardized period of years needed to complete a course
Monthly Amount	Varies from 20,000 yen to 200,000 yen
Period of Applications	From July the year before to June the year you wish to receive the scholarship



## Accommodation Facilities

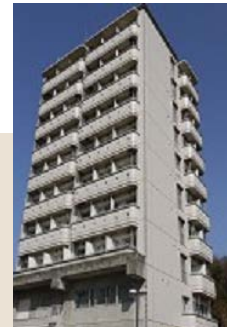
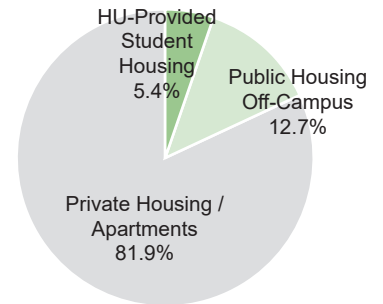
Hiroshima University operates the HU International House and HU Ikenoue Student Dormitory, which provide lodging facilities for students. However, accommodation is limited, and over half of our international students live in private apartments.

### (1) University Dorms

HU offers various types of dormitories to students. Those who wish to apply for a dormitory need to apply prior to university entrance (usually February and July). As the requirements and conditions differ for each dormitory, please consult with the student support office or an academic supervisor before applying.

※ Only students who will study at HU for less than 1 year are eligible to apply for Ikenoue Dormitory or International House (single room).

HU International Student's Housing  
(May, 2022)



### The Hiroshima University International House

(Address: 2-457 Kagamiyama, Higashi-Hiroshima City)

[https://www.hiroshima-u.ac.jp/en/centers/welfare\\_facilities/international\\_house](https://www.hiroshima-u.ac.jp/en/centers/welfare_facilities/international_house)

Established by Hiroshima University for the dual purposes of providing a place to live for international students and promoting international exchange.

	Single (Bldg. A)	Married Couple (Bldg. B)	Family (Bldg. B)
Room	Western-style 1K (13.3㎡)	Western-style 1DK (44.5㎡)	Western-style 2DK (57.5㎡)
Number Available	60 rooms	5 rooms	5 rooms
Monthly Rent	¥ 5,900/month	¥ 9,500/month	¥ 14,200/month
Common House Expenses	¥ 2,500/month	¥ 2,800/month	¥ 3,100/month
Included Furniture, etc.	Unit bath, bed, dresser, bookshelf, desk, chair, cupboard, A/C unit, refrigerator, etc.	Unit bath, bed, dresser, bookshelf, desk, chair, cupboard, A/C unit, dining table chair, washing machine, refrigerator, etc.	Unit bath, bed, dresser, bookshelf, desk, chair, cupboard, A/C unit, dining table chair, washing machine, bunk bed, children's desk, refrigerator, etc.

The residents of Bldg. A will be required to pay 2,000 yen per month for a laundry room usage fee

### Ikenoue Student Dormitory

(Address: 2-812-62 Kagamiyama, Higashi-Hiroshima City)

<https://www.hiroshima-u.ac.jp/en/nyugaku/shien/jyuukyogakuseisyukusya/ikenoue>

This dormitory was founded for the dual purposes of providing appropriate housing to students and giving students the chance to experience student life as a regular citizen. To promote mutual understanding and international exchange, the dorm is offered to both Japanese and international students.



	TYPE-A Men's Dorms	TYPE-B Men's Dorms	TYPE-C New Student's Dorms	TYPE-D Women's Dorms
Rooms	Western-style (10㎡)	Western-style (12㎡)	Western-style (14㎡)	Western-style (12㎡)
Number Available	292 rooms (64 for Int'l Students)	100 rooms (50 for Int'l Students)	100 rooms (51 for Int'l Students)	200 rooms (55 for Int'l Students)
Monthly Rent	¥ 7,500/month	¥ 4,700/month	¥ 15,000/month	¥ 4,700/month
Utility Costs · Laundry room usage fee	About ¥ 10,000/month	About ¥ 10,000/month	About ¥ 10,000/month	About ¥ 10,000/month
Common House Expenses	¥ 1,900/month	¥ 2,000/month	¥ 1,200/month	¥ 2,000/month
Included Furniture, etc.	Bed, desk, chair, locker, A/C and heating unit, small kitchen, etc.	Bed, desk, chair, bookshelf, A/C and heating unit, western-style toilet, etc.	Bed, desk, chair, A/C and heating unit, bathtub, western-style toilet, small kitchen, etc.	Bed, desk, chair, bookshelf, A/C and heating unit, western-style toilet, etc.
Shared Facilities	Multipurpose room, laundry room, shower facilities, western-style toilet	Lounge, multipurpose room, laundry rooms, dining room, shower facilities (1 on each floor)	Multipurpose room, laundry rooms	Lounge, multipurpose room, laundry rooms, dining room, shower facilities (1 on each floor)

## Phoenix International Center MIRAI CREA

(Address: 1-4-5 Kagamiyama, Higashi-Hiroshima City)

The facility has 3 main functions, promoting innovation, facilitating exchange and providing a place to live. It opened in October, 2021. The details of the rooms for international students are as follows.

This facility mainly accommodates short-term international students, who can stay for 1 week up to 1 year, in principle.

\*There is a possibility that the rules may be modified.

Rooms	Western-style 1K (16.7m <sup>2</sup> )
Number Available	34 rooms
Monthly Rent	¥ 40,000/month
Utility Costs	¥ 10,000/month
Rental fee for electric appliances	¥ 4,000/month (refrigerator, hot water dispenser, desk lamp, futon, bed sheets, microwave oven)
Included Furniture, etc.	Desk, chair, bed, air-conditioner, hangers, wired LAN, unit bath
Shared Facilities	Mail box, delivery locker, washing machine, dryer, vacuum cleaner

Room applications must be made through a faculty member/office staff.



## Recommended Apartments for International Students by Hiroshima University

<http://www.hucoop.com/apart/index.html>

Hiroshima University designates several apartments as suitable for international students. The accommodation fee ranges from approx. ¥17,000 to approx. ¥31,000 (per month). Residents in these apartments can receive daily life support from the Hiroshima University Co-op in English and Japanese.

### Affiliated Accommodation

Hiroshima University has partnered with the following apartments to promote exchange between Japanese and international students. Residents in these apartments will have opportunities to have meals and take part in exchange events together. Through these events, they can interact and deepen their friendships.

- College Court Hiroshimadaigaku Kita
- College Court Hiroshimadaigaku Mae
- Dormy Higashi Hiroshima

<http://www.hitorigurashi.com.e.ac.jp.transer.com/estate/2301006105/>

<http://www.hitorigurashi.com.e.ac.jp.transer.com/estate/2301006104/>

<https://dormy-ac.com/placehall/chugoku/higashihiroshima/13383/>



## (2) Public Housing Off-Campus

### Sun Square Higashi-Hiroshima

(Address: 28-6 Saijo Nishihonmachi, Higashi-Hiroshima City)

<http://www.jkk-hiroshima.or.jp/chintai/sunsquare/indexe.html>

Sun Square Higashi-Hiroshima was established as a joint effort of Hiroshima Prefecture and Higashi-Hiroshima City, and built by the Hiroshima Prefectural Housing Corporation for the dual purposes of providing foreign residents with a comfortable place to live, as well as to promote exchange between international students and Japanese students and citizens. Please consult with your supervisor prior to the application. The number of available rooms vary at each application time.

	Single	Family A (standard room) Family J (Japanese room)	Family B (large room)
Room	Western-style 1K (17.46㎡)	A: Western-style 1K (35.31㎡) J: Japanese-style 1K (34.83㎡)	Western-style 1K (52.83㎡)
Number Available	90 rooms	A: 20 rooms J: 5 rooms	2 rooms
Monthly Rent	¥ 20,000/month	¥ 35,000/month	¥ 42,800/month
Maintenance Fee	¥ 2,500/month	¥ 3,500/month	¥ 3,500/month
Furniture Usage Fee	¥ 1,000/month	¥ 1,000/month	¥ 1,000/month
Key Money	¥ 40,000	¥ 70,000	¥ 85,600
Included Furniture	Desk, chair, bookshelf, storage rack, bed, refrigerator, air-conditioner, etc.	Desk, chair, bookshelf, wardrobe, bed, chest of drawers, dining table, cupboard, refrigerator, air-conditioner, etc.	Desk, chair, bookshelf, wardrobe, bed, chest of drawers, dining table, cupboard, refrigerator, air-conditioner, etc.

### Hiroshima International Plaza

(Address: 3-3-1 Kagamiyama, Higashi-Hiroshima City)

<https://hiroshima-hip.or.jp/en/>

#### Global Relations Program (GRP)

International Students can stay at Hiroshima International Plaza with participation in activities such as Japanese language, Japanese culture etc.

	Global Skill Development Course
Duration	1 ~ 2 years
Monthly Rent	¥ 24,950 ~ ¥ 27,350/month
Facilities	Air conditioner, bath, TV, fridge, bed, desk, chair, futon, book shelves, closet, etc.
Shared Facilities	Kitchen

### Hiroshima City International House

(Address: 1-1 Nishi-kojin-machi, Minami-ku, Hiroshima City)

<https://i-house-hiroshima.jp/>

(Japanese text only)

※ Applicants must be international students who study in universities in the area of Hiroshima City.

	Single Room	Family Room
Duration	Up to 2 years	Up to 2 years
Monthly Rent	¥ 26,000 /month	¥ 36,000 /month
Facilities	Air conditioner, mini-fitted-kitchen, modular bath, toilet, refrigerator, bed, desk, chair, book shelves, closet, etc.	Air conditioner, mini-fitted-kitchen, modular bath, toilet, refrigerator, bed, desk, chair, book shelves, closet, table, laundry machine, etc.

## (3) Private Apartments

- Higashi-Hiroshima City: Most rooms include a kitchen, bath, and bathroom; rent ranges from ¥20,000 to ¥50,000 per month.
- Hiroshima City: Completely unfurnished rooms and rooms with baths, kitchens, and bathrooms available.

Rent depends on the size of the room, facilities, etc. (ranges from ¥30,000 to ¥80,000 per month)

In Japan, it is customary to pay key money, deposit money, broker's commission as well as several months of rent upfront when signing the lease. We advise you to bring at least 4 to 6 months' rent when going to finalize the contract.

## Student Voice

### JANT (Philippines) Doctorate Program, Graduate School of Integrated Sciences for Life

Pursuing my graduate studies here in Hiroshima University is both an honor and a challenge. It is an HONOR to be studying in one of Japan's top universities and a CHALLENGE to live up with the excellence HU embodies.

The university hones us to become experts in our own fields and to become valuable members of the international community. The efficient logistics, mentorship with my professors, institutional collaborations, and supervised independence in research allowed me to access my best potential as a young scientist. Failures are not something to be frightened of but was a motivation to continue. As we are now in an era gearing towards sustainability, HU, together with its stakeholders, provides excellent programs and activities that address the challenges of the SDGs. These holistic educational programs did not only confine us within the perimeters of the university but also encouraged us to be more involved in communities, both locally and in abroad. Together with my regular laboratory experiments, attending conferences, joining volunteer events and cultural exchanges, and participating in student organizations have diversified my academic life. The study environment in HU also kept my mental health in check. The Higashi Hiroshima campus is strategically situated in an area where one's tired body can relax as the landscape shifts with the changing of the seasons.

Studying here in HU is a rollercoaster ride for me. It is a prideful yet a humbling experience. To anyone seeking an institution of academic excellence, with good study/life-balance, inclusive, and have a vision to create a more sustainable community, I believe Hiroshima University has ticked the checklist.



## Resident Status

International students wishing to enter Hiroshima University are required to gain the necessary qualifications to stay in Japan as an international student, namely the qualification of "Student" as provided in the Japanese Immigration-Control and Refugee-Recognition Act.

When you come to Japan to submit applications or to take the entrance examination, you may come by visas other than a student visa. When coming for enrollment procedures at this University, only after you have passed the examination and completed registration is it necessary for you to obtain the status of "Student" (It is possible that you may be required to apply for the status of "Student" back in your country).

### Acquisition of Certificate of Eligibility

The Certificate of Eligibility (CoE) is a document issued by the Immigration Bureau of the Japanese Ministry of Justice as evidence that the foreign national meets the conditions for landing in Japan, including the requirements of the activity in which the foreign national wishes to engage in Japan.

A student of foreign nationality wishing to enter a Japanese university as an international student needs to apply for a visa with status of "Student" at the nearest Japanese Embassy or Consulate before entering Japan. To apply, you may submit a Certificate of Eligibility to the Japanese Embassy or Consulate together with your passport and required documents. Your entry visa can be obtained within a short period.

The Global Initiatives Group will perform the necessary procedures to apply for your Certificate of Eligibility at the Immigration Bureau. It will take about 1 to 3 months for your Certificate of Eligibility to be issued. Therefore, we recommend that you perform the online application and submit the required documents for the CoE as soon as you receive your Notification of Acceptance.

The application procedure is on the following website.

[https://www.hiroshima-u.ac.jp/en/international/admissions/admission\\_guide/residentstatus/procedure](https://www.hiroshima-u.ac.jp/en/international/admissions/admission_guide/residentstatus/procedure)

## キャリアサポート

The Global Career Design Center provides diverse support systems, aiming to offer integrated career support for undergraduate students, graduate students and young researchers.

1. Career Guidance Sessions, Seminars
2. Career Guidance Sessions for International Students
3. Career counseling and advice on job hunting  
(Mainly in Japanese, some staff members can give advice in English)
4. Global Internships

Please refer to the following Website "For International Students".

<https://www.hiroshima-u.ac.jp/gcdc/en/ForInternationalStudents>





## Contact Information

Should you have any questions, please include the following information to help us better answer your questions.

- Name:
- Nationality:
- Current Occupation (the Name of your University or Place of Employment):
- Desired Field of Study:
- Desired Academic Advisor (if decided):
- Desired Course at Hiroshima University (ex. Undergraduate Course, Research Student, Master's Course, Doctoral Course, etc.):
- Contact Information (E-mail address, Telephone number, or Fax number):

## Undergraduate Programs

### School of Integrated Arts and Sciences

Support Office for the fields of Integrated Arts and Sciences  
1-7-1, Kagamiyama, Higashi-Hiroshima, 739-8521  
TEL +81-82-424-6315 FAX +81-82-424-8246  
souka-gaku-sien@office.hiroshima-u.ac.jp

### School of Letters

Support Office for the fields of Humanities and Social Sciences (Letters)  
1-2-3, Kagamiyama, Higashi-Hiroshima, 739-8522  
TEL +81-82-424-6613 FAX +81-82-424-0315  
bun-gaku-sien@office.hiroshima-u.ac.jp

### School of Education

Support Office for the fields of Education  
1-1-1, Kagamiyama, Higashi-Hiroshima, 739-8524  
TEL +81-82-424-6725 FAX +81-82-424-7108  
kyoiku-gakusi@office.hiroshima-u.ac.jp

### School of Law

Support Office for the fields of Humanities and Social Sciences (Law and Economics)  
1-2-1, Kagamiyama, Higashi-Hiroshima, 739-8525  
TEL +81-82-424-7215 FAX +81-82-424-7220  
syakai-gaku-sien@office.hiroshima-u.ac.jp

\*From April, 2023:

Higashi-Senda Area Support Office  
1-1-89, Higashi-Senda, Nakaku, Hiroshima, 730-0053  
TEL +81-82-542-6998 FAX +81-82-542-6964  
senda-gaku-sien@office.hiroshima-u.ac.jp

### School of Economics

Support Office for the fields of Humanities and Social Science (Law and Economics)  
1-2-1, Kagamiyama, Higashi-Hiroshima, 739-8525  
TEL +81-82-424-7217 FAX +81-82-424-7220  
syakai-gaku-sien@office.hiroshima-u.ac.jp

### School of Science

Support Office for the fields of Science  
1-3-1, Kagamiyama, Higashi-Hiroshima, 739-8526  
TEL +81-82-424-7309 FAX +81-82-424-2464  
ri-gaku-sien@office.hiroshima-u.ac.jp

### School of Medicine

International Office, Kasumi Campus  
1-2-3, Kasumi, Minami-ku, Hiroshima, 734-8553  
TEL +81-82-257-1705 FAX +81-82-257-5278  
kasumi-kokusai@office.hiroshima-u.ac.jp

### School of Dentistry

International Office, Kasumi Campus  
1-2-3, Kasumi, Minami-ku, Hiroshima, 734-8553  
TEL +81-82-257-1705 FAX +81-82-257-5278  
kasumi-kokusai@office.hiroshima-u.ac.jp

### School of Pharmaceutical Sciences

International Office, Kasumi Campus  
1-2-3, Kasumi, Minami-ku, Hiroshima, 734-8553  
TEL +81-82-257-1705 FAX +81-82-257-5278  
kasumi-kokusai@office.hiroshima-u.ac.jp

### School of Engineering

Support Office for the fields of Engineering  
1-4-1, Kagamiyama, Higashi-Hiroshima, 739-8527  
TEL +81-82-424-7515 FAX +81-82-424-5461  
kou-gaku-gakubu@office.hiroshima-u.ac.jp

### School of Applied Biological Science

Support Office for the fields of Biosphere Science  
1-4-4, Kagamiyama, Higashi-Hiroshima, 739-8528  
TEL +81-82-424-7915 FAX +81-82-424-6480  
sei-gaku-sien@office.hiroshima-u.ac.jp

### School of Informatics and Data Science

Support Office for the fields of Engineering  
1-4-1, Kagamiyama, Higashi-Hiroshima, 739-8527  
TEL +81-82-424-7611 FAX +81-82-424-5461  
kou-gaku-gakubu@office.hiroshima-u.ac.jp

# Graduate Schools

## Humanities and Social Sciences

### Humanities Program

Support Office for the fields of Humanities and Social Sciences (Letters)  
1-2-3, Kagamiyama, Higashi-Hiroshima, 739-8522

TEL +81-82-424-6615 FAX +81-82-424-0315  
bun-gaku-sien@office.hiroshima-u.ac.jp

### Law and Politics Program

Support Office for the fields of Humanities and Social Sciences(Law and Economics)  
1-2-1, Kagamiyama, Higashi-Hiroshima, 739-8525  
※ From April 2023:

TEL +81-82-424-7148 FAX +81-82-424-7220  
syakai-gaku-sien@office.hiroshima-u.ac.jp

Higashi-Senda Area Support Office

1-1-89, Higashi-Senda, Nakaku, Hiroshima, 730-0053

TEL +81-82-542-6998 FAX +81-82-542-6964  
senda-gaku-sien@office.hiroshima-u.ac.jp

### Economics Program

Support Office for the fields of Humanities and Social Sciences(Law and Economics)  
1-2-1, Kagamiyama, Higashi-Hiroshima, 739-8525

TEL +81-82-424-7189 FAX +81-82-424-7220  
syakai-gaku-sien@office.hiroshima-u.ac.jp

### Integrated Arts and Human Sciences Program

Support Office for the fields of Integrated Arts and Sciences  
1-7-1, Kagamiyama, Higashi-Hiroshima, 739-8521

TEL +81-82-424-6316 FAX +81-82-424-8246  
souka-gaku-sien@office.hiroshima-u.ac.jp

### Psychology / Educational Design for Teacher Educators / Educational Studies / Teaching Japanese as a Second Language/

### Professional Development Program for Teachers and School Leaders

Support Office for the fields of Education  
1-1-1, Kagamiyama, Higashi-Hiroshima, 739-8524

TEL +81-82-424-3706 FAX +81-82-424-7108  
kyoiku-in@office.hiroshima-u.ac.jp

### International Peace and Co-existence / International Economic Development / International Education Development Program

Support Office for the fields of International Development and Cooperation  
1-5-1, Kagamiyama, Higashi-Hiroshima, 739-8529

TEL +81-82-424-5902 FAX +81-82-424-6904  
koku-gaku@office.hiroshima-u.ac.jp

### Management Sciences Program

Higashi-Senda Area Support Office  
1-1-89, Higashi-Senda, Nakaku, Hiroshima, 730-0053

TEL +81-82-542-6962 FAX +81-82-542-6964  
senda-gaku-sien@office.hiroshima-u.ac.jp

### Program for Law Practice Professionals

Higashi-Senda Area Support Office  
1-1-89, Higashi-Senda, Nakaku, Hiroshima, 730-0053

TEL +81-82-542-7087 FAX +81-82-542-6964  
houmu-gaku-sien@office.hiroshima-u.ac.jp

## Advanced Science and Engineering

### Mathematics / Physics / Earth and Planetary Systems Science / Chemistry Program

Support Office for the fields of Science  
1-3-1, Kagamiyama, Higashi-Hiroshima, 739-8526

TEL +81-82-424-7309 FAX +81-82-424-2464  
ri-gaku-sien@office.hiroshima-u.ac.jp

### Applied Chemistry / Chemical Engineering / Electrical, Systems, and Control Engineering / Mechanical Engineering / Architecture / Transportation and Environmental Systems / Civil and Environmental Engineering / Informatics and Data Science / Smart Innovation Program

Support Office for the fields of Engineering  
1-4-1, Kagamiyama, Higashi-Hiroshima, 739-8527

TEL +81-82-424-7518 FAX +81-82-424-5461  
kou-gaku-daigakuin@office.hiroshima-u.ac.jp

### Quantum Matter Program

Support Office for the fields of Science (AdSM)  
1-3-1, Kagamiyama, Higashi-Hiroshima, 739-8530

TEL +81-82-424-7008 FAX +81-82-424-7000  
sentan-gaku-sien@office.hiroshima-u.ac.jp

### Transdisciplinary Science and Engineering Program

Support Office for the fields of Integrated Arts and Sciences  
1-7-1, Kagamiyama, Higashi-Hiroshima, 739-8521

(Environmental and Natural Sciences Field)  
TEL +81-82-424-6316 FAX +81-82-424-8246  
souka-gaku-sien@office.hiroshima-u.ac.jp

### Transdisciplinary Science and Engineering Program

Support Office for the fields of International Development and Cooperation  
1-5-1, Kagamiyama, Higashi-Hiroshima, 739-8529

(Development Science Field)  
TEL +81-82-424-5902 FAX +81-82-424-6904  
koku-gaku@office.hiroshima-u.ac.jp

## Integrated Sciences for Life

### Program of Biotechnology

Support Office for the fields of Science (AdSM)  
1-3-1, Kagamiyama, Higashi-Hiroshima, 739-8530

TEL +81-82-424-7008 FAX +81-82-424-7000  
sentan-gaku-sien@office.hiroshima-u.ac.jp

### Program of Food and AgriLife Science / Bioresource Science

Support Office for the fields of Biosphere Science  
1-4-4, Kagamiyama, Higashi-Hiroshima, 739-8528

TEL +81-82-424-7908 FAX +81-82-424-6480  
sei-daigakuin-sien@office.hiroshima-u.ac.jp

### Program of Life and Environmental Sciences

Support Office for the fields of Integrated Arts and Sciences  
1-7-1, Kagamiyama, Higashi-Hiroshima, 739-8521

TEL +81-82-424-6316 FAX +81-82-424-8246  
souka-gaku-sien@office.hiroshima-u.ac.jp

### Program of Basic Biology / Mathematical and Life Sciences / Biomedical Science

Support Office for the fields of Science  
1-3-1, Kagamiyama, Higashi-Hiroshima, 739-8526

TEL +81-82-424-7309 FAX +81-82-424-2464  
ri-gaku-sien@office.hiroshima-u.ac.jp

## Biomedical and Health Sciences

International Office, Kasumi Campus  
1-2-3, Kasumi, Minami-ku, Hiroshima, 734-8553

TEL +81-82-257-1705 FAX +81-82-257-5278  
kasumi-kokusai@office.hiroshima-u.ac.jp

## Innovation and Practice for Smart Society

Support Office for the fields of International Development and Cooperation  
1-5-1, Kagamiyama, Higashi-Hiroshima, 739-8529

TEL +81-82-424-5902 FAX +81-82-424-6904  
Smart-society@office.hiroshima-u.ac.jp



HIROSHIMA UNIVERSITY

Inquiries about the undergraduate entrance examination

Office of Admissions

E-mail: [nyusi-group@office.hiroshima-u.ac.jp](mailto:nyusi-group@office.hiroshima-u.ac.jp)

Contact point for applicants who wish to study at graduate schools of Hiroshima University

International Admissions Office (IAO)

E-mail: [iao-contact@hiroshima-u.ac.jp](mailto:iao-contact@hiroshima-u.ac.jp)