

Newsletter 3 | May 2022

Association des Riverains de Chauvilly



Dear friends,

At the beginning of spring and the pleasant arrival of sunny days, you have undoubtedly noticed the renewed activity on the Chauvilly site. Faced with this, our association remains mobilized and determined to defend our quality of life and to alert the population to the risks associated with the expansion of the landfill.

Our objections are being investigated, which takes time. As administrative law does not have suspensive effect in France, the activity, at this moment, of the landfill is legal. Today, we need you more than ever to urgently ask our elected officials to stop the nuisances generated by this site.

In this Newsletter, you will find our latest news as well as **a report on drinking water** in the Pays de Gex and the pressure being put on this essential resource.

Latest news from the association:

Our General Assembly (GA) was held on April 6 at the Auberge de Cessy. We presented the association's activity report and accounts for 2021 and defined the objectives to come in 2022.

The main objectives for 2022:

- Continue our administrative objections in order to put an end to the nuisances.
- Achieve a technical exchange with our policies. Despite our many steps, we do not perceive any real desire for discussion from the ones responsible.
- Continue to alert the population of the Pays de Gex to the risks associated with the expansion of the landfill, continue to inform them of our actions.

To continue our actions in 2022 we need you more than ever!

DOSSIER OF THE MONTH: Drinking water in the Pays de Gex: what links with Chauvilly?

Despite heavy rainfall, the Pays de Gex is deficient in drinking water. This is linked to a high demand taken directly from the deep aquifers that are slowly renewing. As a result, water from Lake Geneva is also used as a supplement.

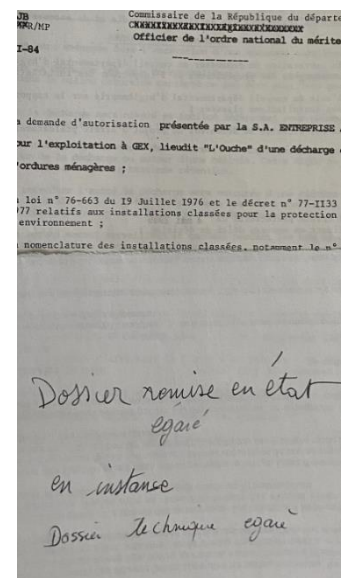
The Chauvilly site is close to the catchments of the deep aquifers of Pré Bataillard and Chainaz that feed the northern half of the Pays de Gex.

During the spectacular environmental accident at the Chauvilly landfill in 1992 (discharge of pollutants into the rivers), the department's geologist indicated that there was no risk for Pré Bataillard and a low risk for the Chainaz catchment without being able to completely exclude it. **This subject of deep pollution remains a point of concern as pollution can migrate through the soil to reach the aquifers in the long term.**

In addition, the Chauvilly site is strongly affected by the surface water table which has a high flow. Which was identified in 1982 as the source of the Grilly and Cessy fountains. The 1993 geologist report indicates that **the polluted soil of the old landfill is bathing directly in it!** In addition, the BASIAS database - which makes it possible to identify incidents of soil and groundwater pollution in France - indicates that the site is polluted with high-toxicity waste of probably industrial origin. This information is corroborated by the analyses carried out by the Atena association.

In fact, this risk **threatens historic fountains**. More seriously, this makes it unlikely that this water resource will be exploited as drinking water in the long term. IT poses a risk of **underground transport of pollutants downstream**, which must be studied.

The fragility of this resource has been clearly identified by the department's quarry department, which has identified the site as **an Area of Major Interest "with strong protection for drinking water resources"**. This classification makes it more protected for example than Natura 2000 wetlands!



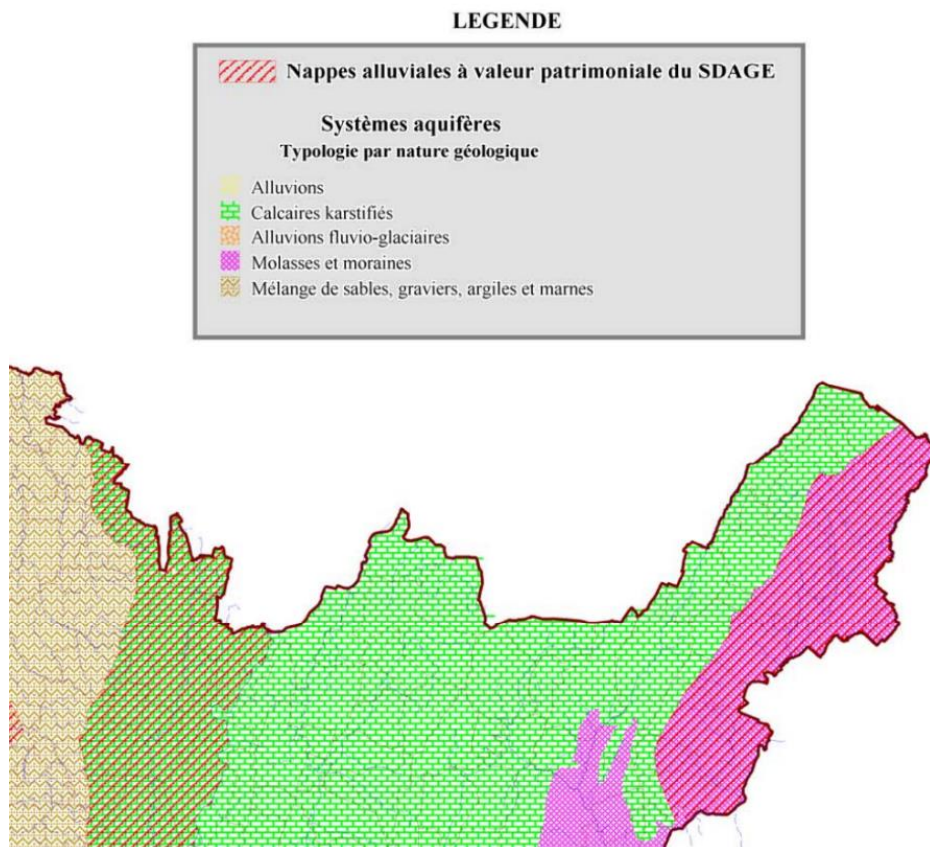
This risk was clearly identified by the firm CSD, commissioned in 2002 to audit the restoration of the site (a restoration in condition that was not carried out at that date).

Last July, 30 years later, during a visit to the prefecture the file was presented to us as "lost" before finally showing us 6 months later, but incomplete...

We contacted the president of the design office who is retired. **He stresses the absolute need to regularly control the flow of groundwater!** (via piézometers).

How is the ISDI application file misleading?

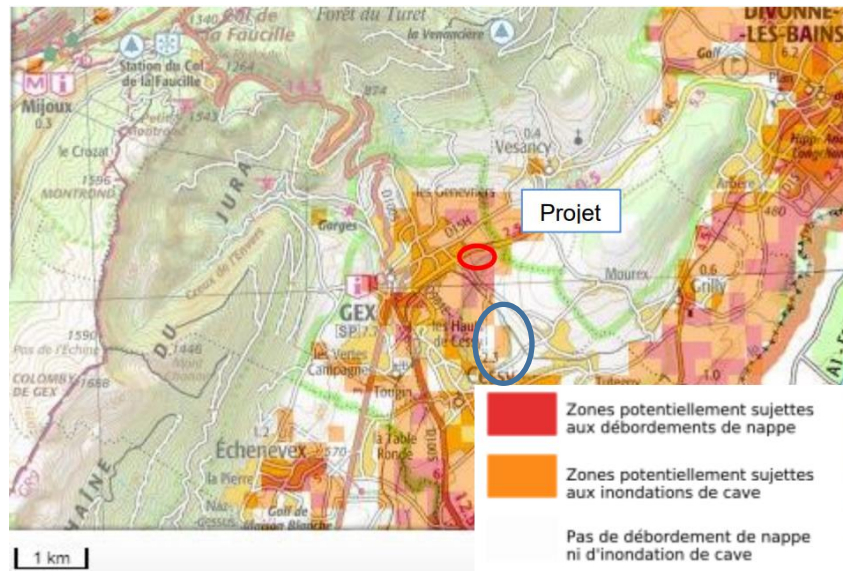
The ISDI application package states in Appendix 6: "No groundwater table exploited or at stake is identified in the site environment." **This remains very insufficient in view of the information we have** (see documents below, *source Regional Directorate for Research Industry and the Environment*)



Also, in Annex 6 of the application it is mentioned: "The site of the future ISDI is therefore not concerned by any phenomenon of upwelling and outcropping of groundwater".

This is conflicting with the 1993 report and the document below from the base of the Bureau de Recherches Géologiques et Minières (BRGM).

It seems that the natural terrain is confused with the current level... (Natural Land + Waste + Embankments)



As you will have understood, all this has consequences for all of us:

- **A risk of groundwater pollution**, which is not really considered
- **Local water resources are even more limited** due to uncertainties, increasing the risk of shortages and the rising cost of drinking water in the Pays de Gex.
- **A risk of exploding costs for the community** in case of need to clean up the site, this after the operators will have added thousands of m3 of rubble ...

You can act! Support the Association Les Riverains de Chauvilly and talk about it around you.



More useful info: <https://www.stopcarrièrechauvilly.fr>

We achieve all this thanks to you.

Thank you for your support for our quality of life to all. And keep supporting us!

Talk about it around you, propose new members or make a donation via the website.