



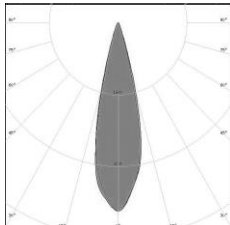
## SPECIFICATIONS

Puissance	1,2W
Flux à 3000°K-IRC70	100lm
Configuration	Main courante
Température de couleur au choix	2200°K-2700°K-3000°K-4000°K-5000°K
IRC au choix	70-80-90
Angle d'éclairage	25°-60°-90°-Asymétrique
Alimentation	48VDC
Pilotage au choix	ON/OFF-DALI-DMX
Protection	IP66
Matériaux	Plastique-PMMA
Finition	Gris
Poids	0,2kg

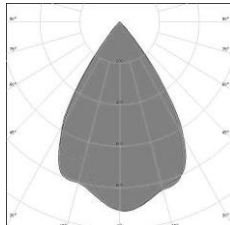


## PHOTOMETRIES

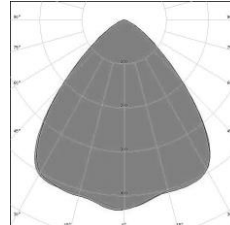
25°



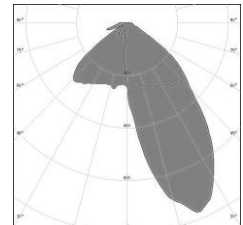
60°



90°

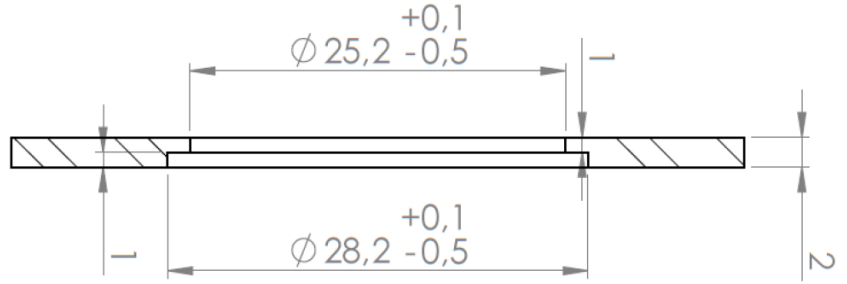
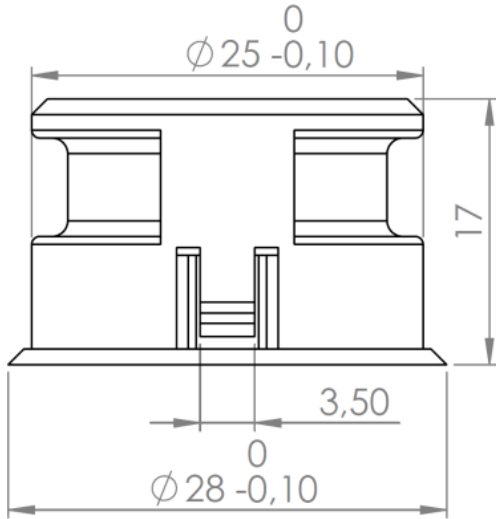


Asymétrique

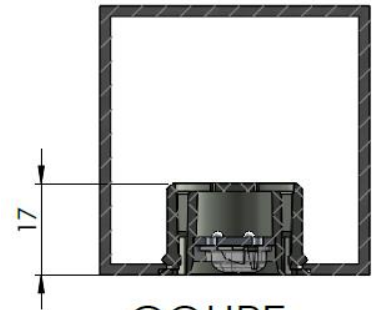
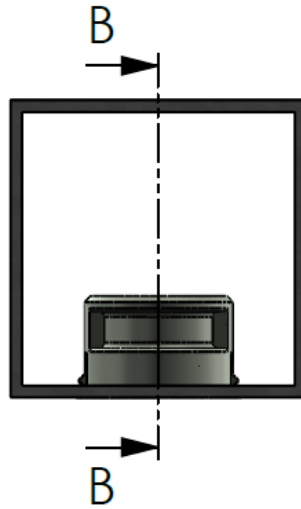
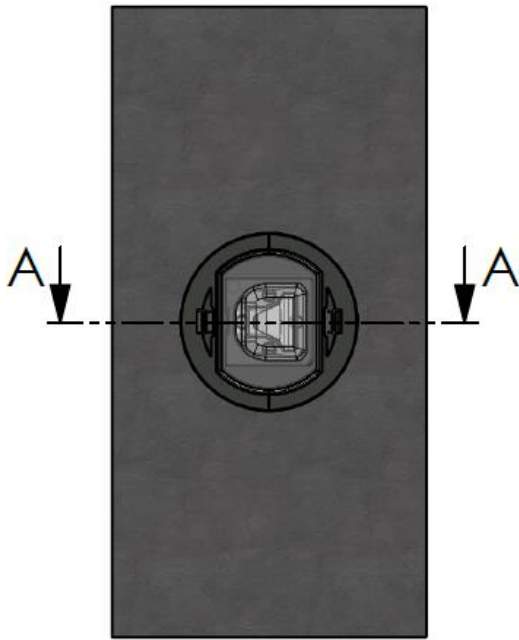




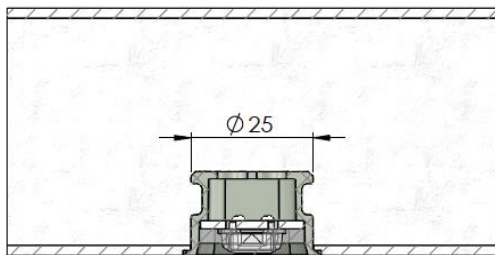
## DETAILS TECHNIQUES



Perçage de la rambarde



COUPE A-A



COUPE B-B

