

Wohnung 16:

Table with 3 columns: Room, Material (FB), Area (NGF), and Perimeter (RU). Rows include Diele, Bad, Abst., WC, and Schlafen.

Table with 3 columns: Room, Material (FB), Area (NGF), and Perimeter (RU). Rows include Kind 1, Kind 2, and Kochen.

Table with 3 columns: Room, Material (FB), Area (NGF), and Perimeter (RU). Rows include Kind 1, Kind 2, and Kochen.

Table with 3 columns: Room, Material (FB), Area (NGF), and Perimeter (RU). Rows include Kind 1, Kind 2, and Kochen.

Wohnung 15:

Table with 3 columns: Room, Material (FB), Area (NGF), and Perimeter (RU). Rows include Diele, WC, and Abst.

Table with 3 columns: Room, Material (FB), Area (NGF), and Perimeter (RU). Rows include Wohnen / Essen, Kochen, and Schlafen.

Table with 3 columns: Room, Material (FB), Area (NGF), and Perimeter (RU). Rows include Bad, Balokn, and Schlafen.

Table with 3 columns: Room, Material (FB), Area (NGF), and Perimeter (RU). Rows include Balokn, Wohnen / Essen, and Kochen.

Wohnung 14:

Table with 3 columns: Room, Material (FB), Area (NGF), and Perimeter (RU). Rows include Diele, Bad, and Abst.

Table with 3 columns: Room, Material (FB), Area (NGF), and Perimeter (RU). Rows include WC, Schlafen, and Kochen.

Table with 3 columns: Room, Material (FB), Area (NGF), and Perimeter (RU). Rows include Kind 1, Kind 2, and Kochen.

Table with 3 columns: Room, Material (FB), Area (NGF), and Perimeter (RU). Rows include Kind 1, Kind 2, and Kochen.

Table with 3 columns: Room, Material (FB), Area (NGF), and Perimeter (RU). Rows include Wohnen / Essen, Balokn, and Treppenhaus.

Table with 3 columns: Room, Material (FB), Area (NGF), and Perimeter (RU). Rows include Diele Treppenhaus, Außenwand-Öffnungen Rohbau, and Innenwände an Fassade Rohbau.

Table with 3 columns: Room, Material (FB), Area (NGF), and Perimeter (RU). Rows include Wohnen / Essen, Balokn, and Treppenhaus.

Table with 3 columns: Room, Material (FB), Area (NGF), and Perimeter (RU). Rows include Wohnen / Essen, Balokn, and Treppenhaus.

Table with 3 columns: Room, Material (FB), Area (NGF), and Perimeter (RU). Rows include Wohnen / Essen, Balokn, and Treppenhaus.

Table with 3 columns: Room, Material (FB), Area (NGF), and Perimeter (RU). Rows include Wohnen / Essen, Balokn, and Treppenhaus.

Table with 3 columns: Room, Material (FB), Area (NGF), and Perimeter (RU). Rows include Wohnen / Essen, Balokn, and Treppenhaus.

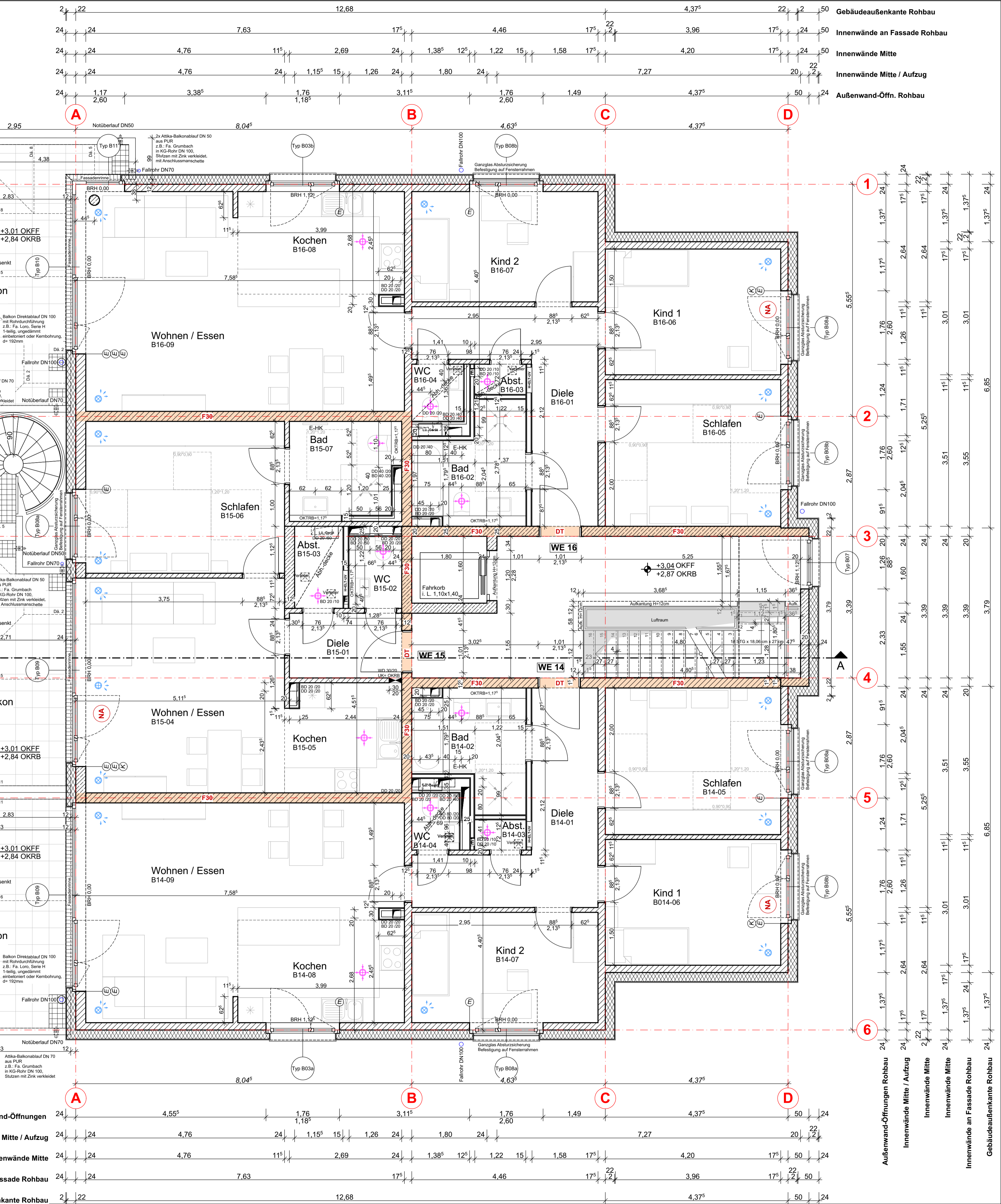
Table with 3 columns: Room, Material (FB), Area (NGF), and Perimeter (RU). Rows include Wohnen / Essen, Balokn, and Treppenhaus.

Table with 3 columns: Room, Material (FB), Area (NGF), and Perimeter (RU). Rows include Wohnen / Essen, Balokn, and Treppenhaus.

Table with 3 columns: Room, Material (FB), Area (NGF), and Perimeter (RU). Rows include Wohnen / Essen, Balokn, and Treppenhaus.

Table with 3 columns: Room, Material (FB), Area (NGF), and Perimeter (RU). Rows include Wohnen / Essen, Balokn, and Treppenhaus.

Table with 3 columns: Room, Material (FB), Area (NGF), and Perimeter (RU). Rows include Wohnen / Essen, Balokn, and Treppenhaus.



Technical specification tables including: LEGENDE RAUMDATEN, LEGENDE BAUELEMENTE, LEGENDE BAUELEMENTE, LEGENDE BAUELEMENTE, LEGENDE BAUELEMENTE.

Technical specification tables including: LEGENDE MATERIALIEN, LEGENDE TÜREN / FENSTER, LEGENDE BAUELEMENTE.

OKFF EG = +/- 0,00 = 52,15 NHN

Table with columns: INDEX, DATUM, GEZ., INHALT. Includes a change list and a project overview diagram.

Project information table including: Planformat, Druckformat, Freigabe für, Arbeitsvorbereitung/Fachplanung, Datum, Rohbau, and Projektübersicht.

Project title and contact information: Neubau von zwei Mehrfamilienhäusern mit Tiefgarage Rheinstraße 311, 50389 Wesseling-Urfeld. Includes architect logo and contact details.