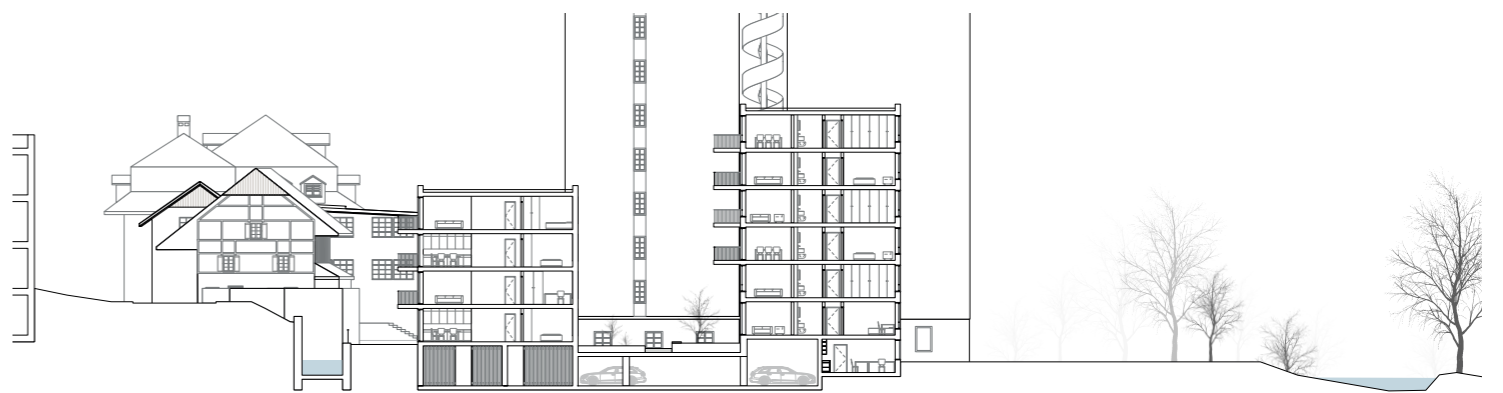
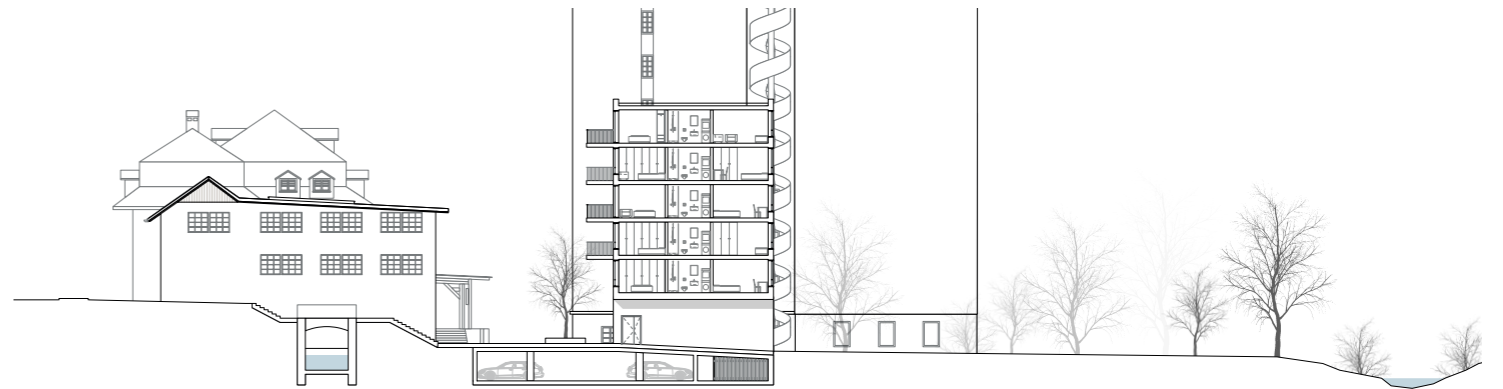




Erdgeschoss | M 1:500



UG | M 1:500



Schnitte | M 1:200



Erdgeschoss I M 1:200

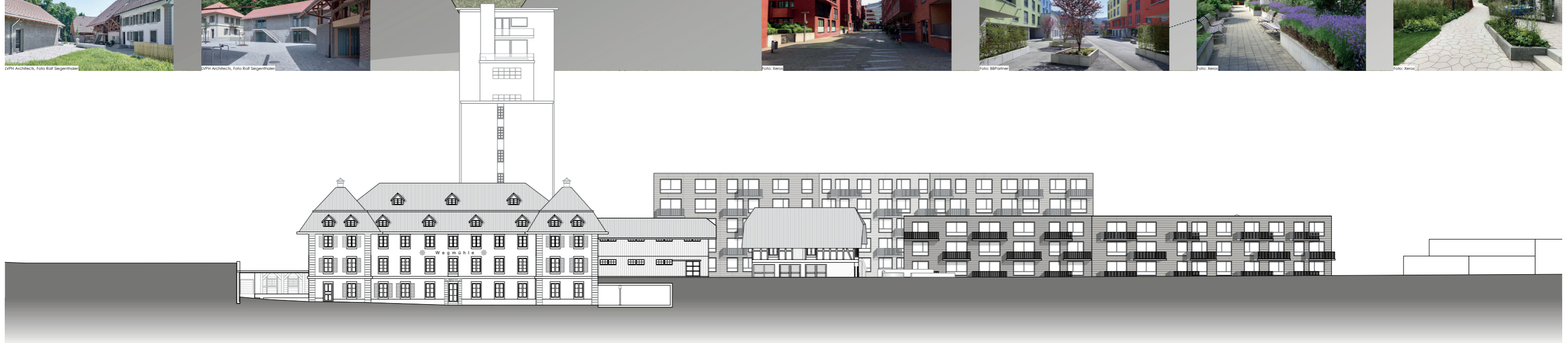
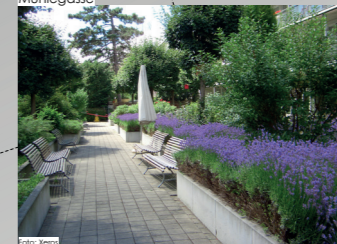
Dörfl



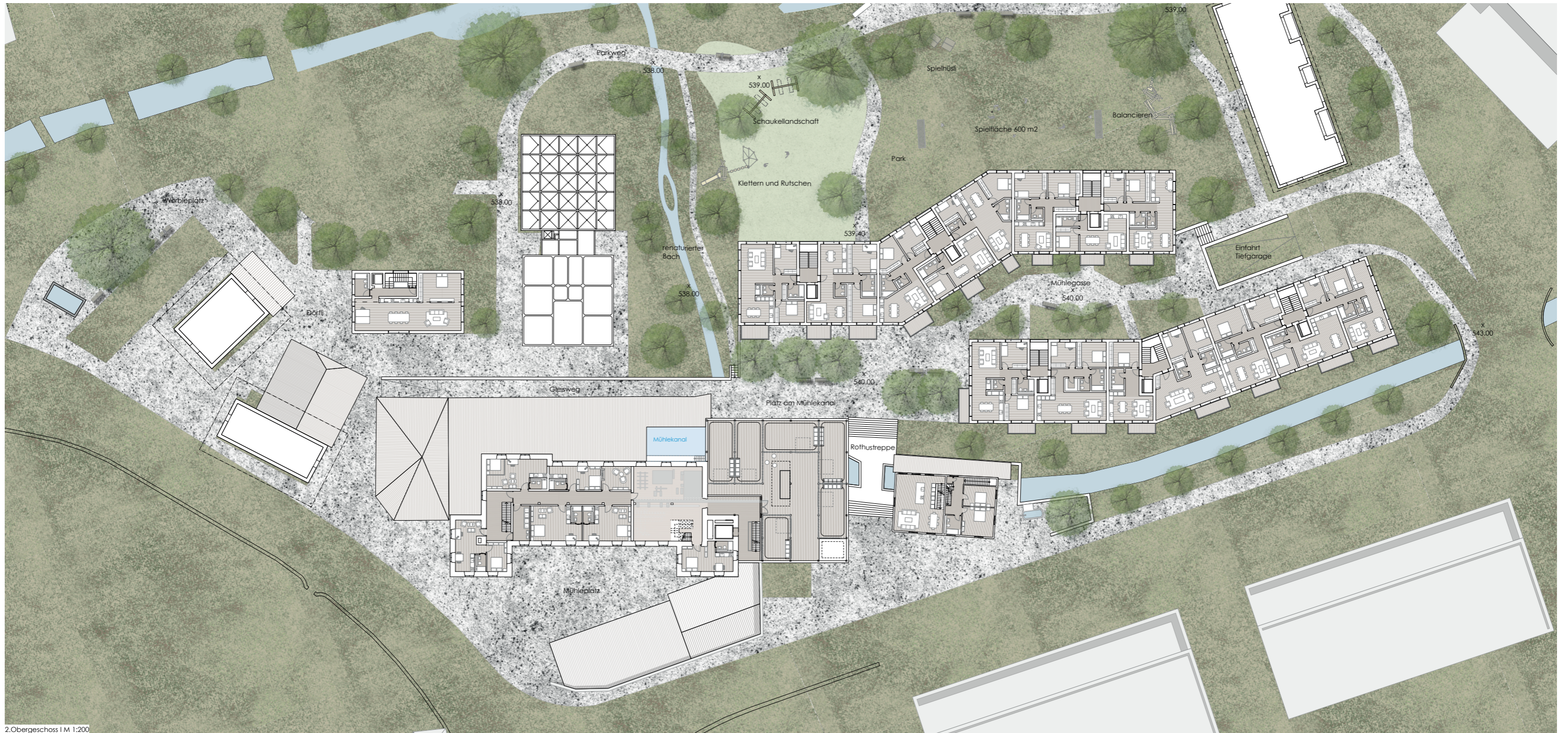
Platz am Mühlekanal



Mühlegasse



Westfassade I M 1:200



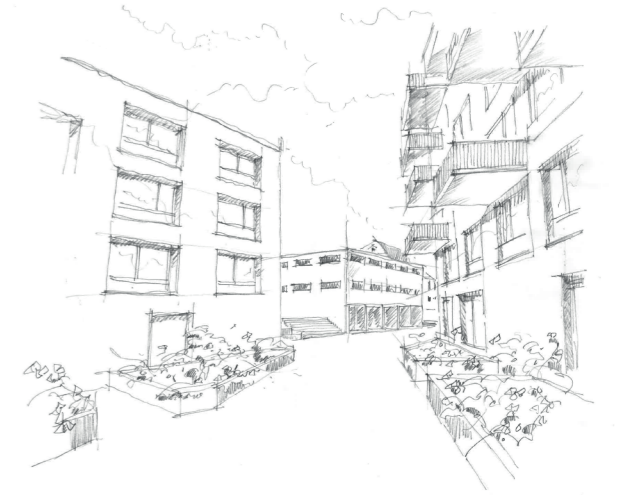
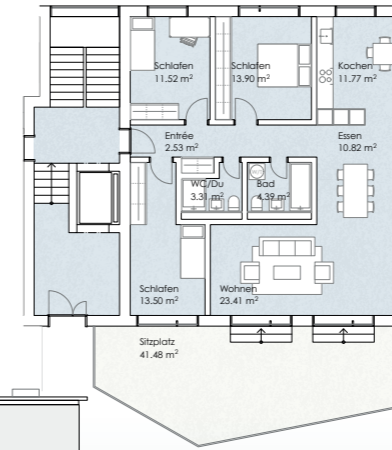
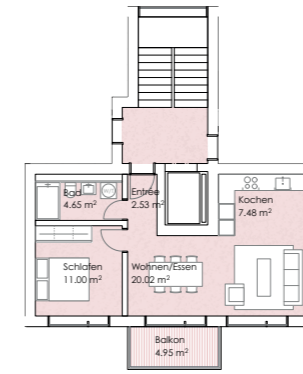
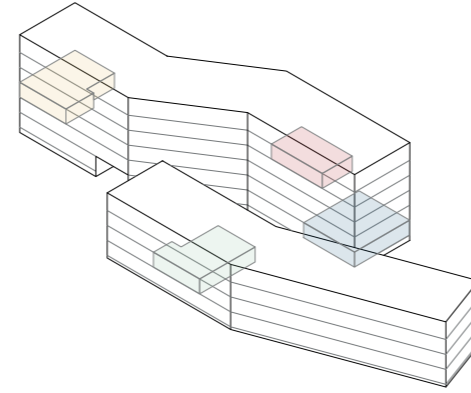
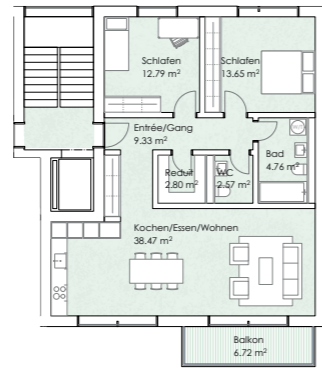
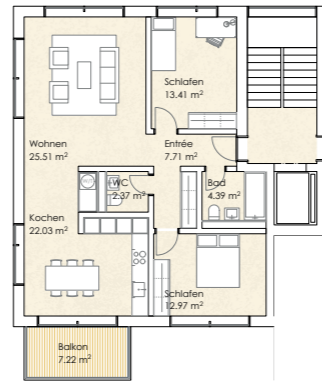
2.Obergeschoss | M 1:200



Langschnitt | M 1:200



	NEUBAU		ALTBAU/SANIERUNG	
	Anzahl	%	Anzahl	%
1.5 Zi-Whg	4	5.2	14	70
2.5 Zi-Whg	18	23.4	4	20
3.5 Zi-Whg	50	64.9	1	5
4.5 Zi-Whg	5	6.5	1	5
TOTAL WOHNUNGEN	77	100	20	100



Ostfassade | M 1:200

