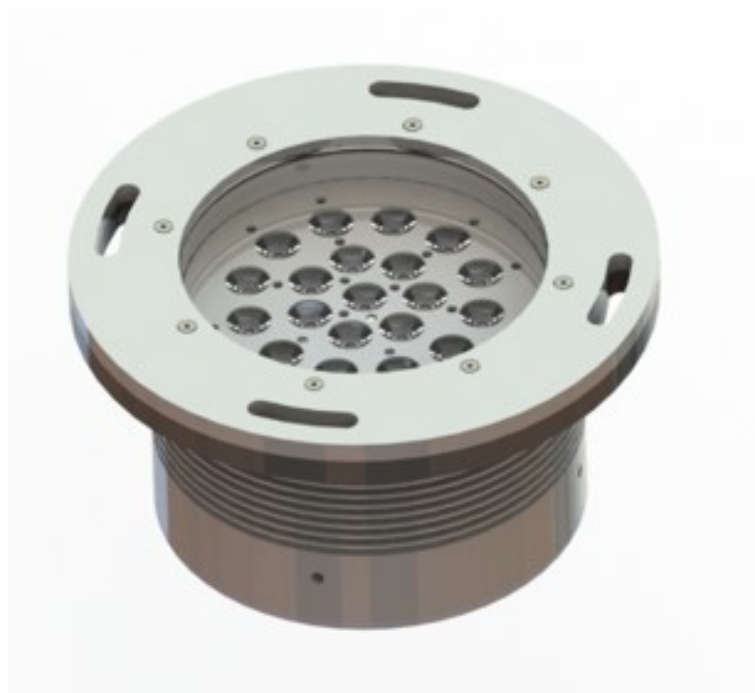


Adaptable au projet

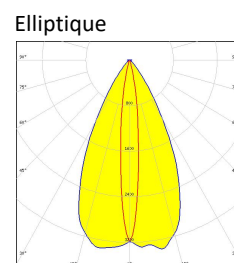
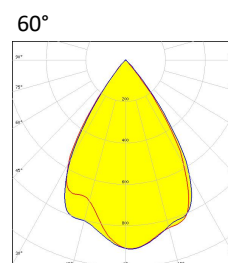
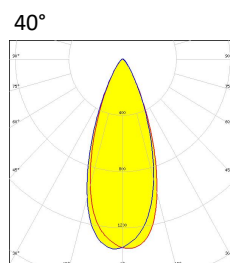
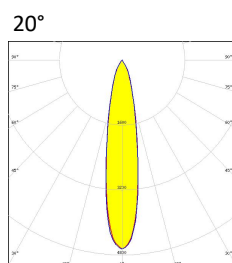
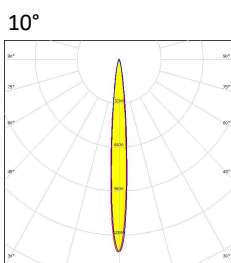


SPECIFICATIONS

Puissance	36W
Flux à 3000K – IRC90	3500lm
Configuration	Encastré de sol
Température de couleur au choix	De 2200K à 5000K-RGBW-TW
IRC	90
Angle d'éclairage au choix	10°-20°-40°-60°-Elliptique
Alimentation	230VAC
Pilotage au choix	ON/OFF-DALI-DMX
Protection	IP68-Classe I
Matériaux	Aluminium
Finition	Anodisation – Thermolaquage RAL au choix
Poids	6kg



PHOTOMETRIES



Autre photométrie sur demande

Adaptable au projet



DESSIN DIMENSIONNEL (mm)

