



WELCOME

Healthy Planet - Healthy People

04 - 08/10/2021

C1 Troisdorf

Climate Crisis Facts and Tasks



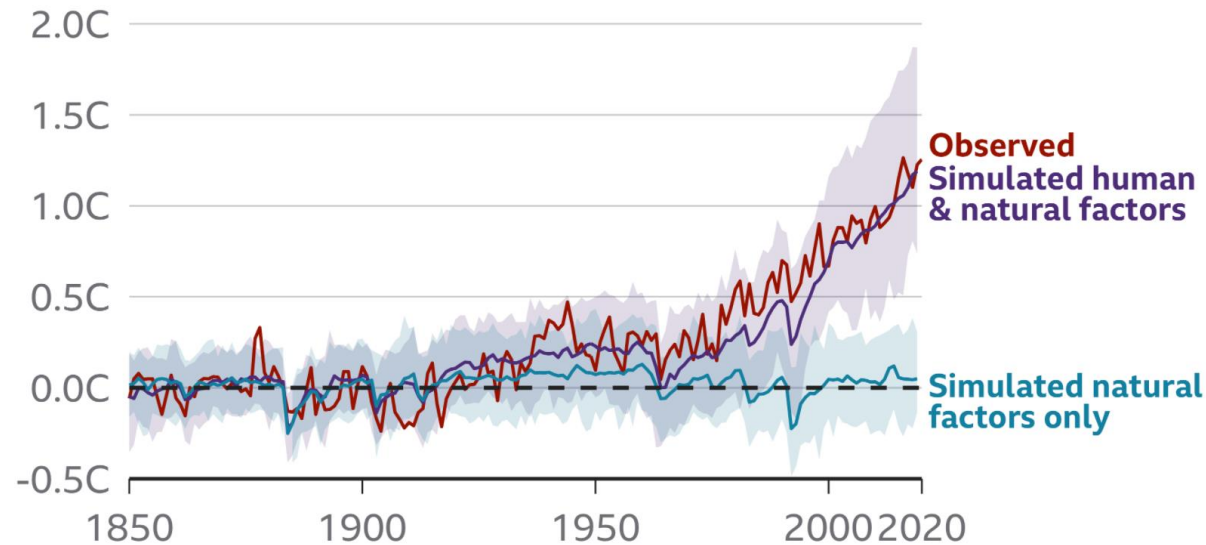
| Tuesday 05/10/21 Troisdorf | Time | What's planned? | Notes/Adresses |
|----------------------------------|---------------|---|--|
| | 08.52 | Bus Nr 551 to School Direction Bonn | Get off at bus stop "Rotter See" |
| | 09.30 | WELCOME DELEGATION Teachers Pictures | GKB Troisdorf Kerschensteinerstraße 4 53844 Troisdorf |
| | 09.30 - 12.30 | <ul style="list-style-type: none"> •Welcoming by headmistress Ursula Heine •Presentation of our Erasmus+ work by Anne Eich and Sadife Akca-Yücesoy •Presentation of the school by Susanne Lackmann | Room TU0 |
| | 12.30 - 13.30 | Lunchbreak •Lunch at mensa | Gesamtschule Troisdorf-Sieglar Edith-Stein-Str. 20, Troisdorf ·02241 96233 |
| | 13.00 - 15.00 | Workshop <ul style="list-style-type: none"> •School development •Climate Crisis •Daily Feedback | Room TU0 |
| | 18.00 | Free time | |



Climate Crisis

Human influence has warmed the climate

Change in average global temperature relative to 1850-1900, showing observed temperatures and computer simulations



Note: Shaded areas show possible range for simulated scenarios

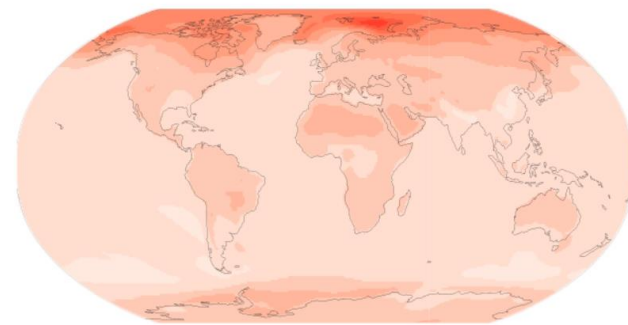
Source: IPCC, 2021: Summary for Policymakers

BBC

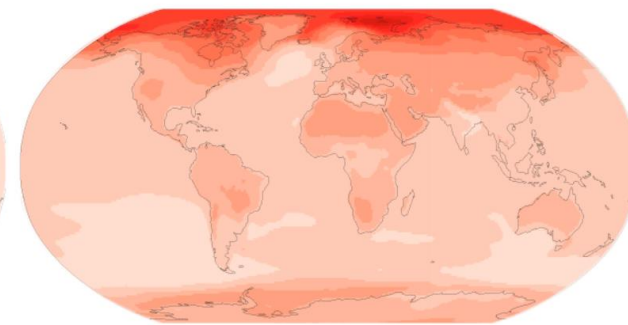
[Climate change: IPCC report is 'code red for humanity' - BBC News](#)



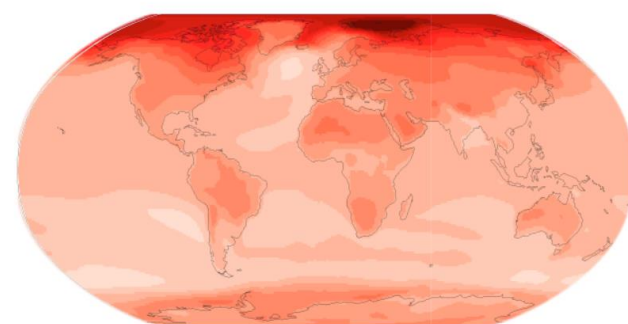
Change at 1C global warming



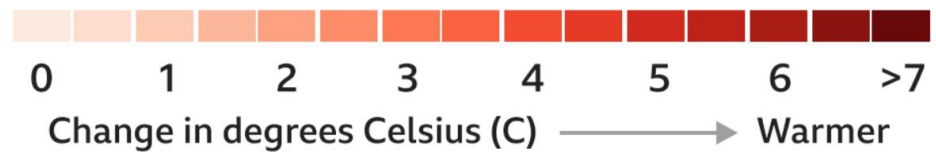
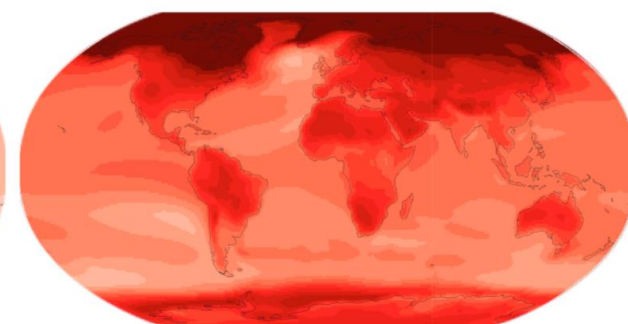
Change at 1.5C global warming



Change at 2C global warming



Change at 4C global warming



[Climate change: IPCC report is 'code red for humanity' - BBC News](#)

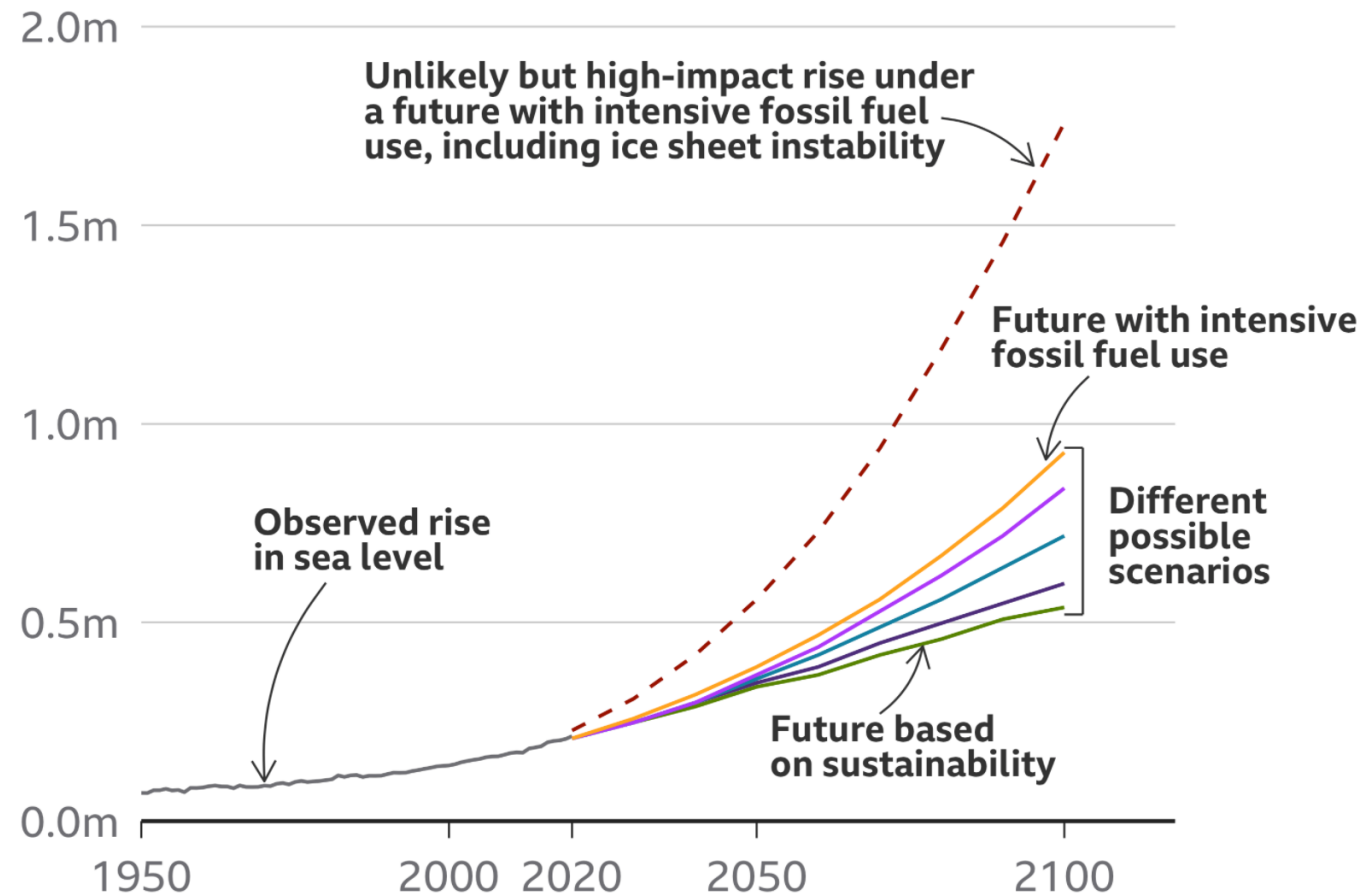


IPCC report key points

- Global surface temperature was 1.09°C higher in the decade between 2011-2020 than between 1850-1900.
- The past five years have been the hottest on record since 1850
- The recent rate of sea level rise has nearly tripled compared with 1901-1971
- Human influence is "very likely" (90%) the main driver of the global retreat of glaciers since the 1990s and the decrease in Arctic sea-ice
- It is "virtually certain" that hot extremes including heatwaves have become more frequent and more intense since the 1950s, while cold events have become less frequent and less severe

[Climate change: IPCC report is 'code red for humanity' - BBC News](#)

Average rise in sea level relative to 1900



Source: IPCC, 2021: Summary for Policymakers

BBC

[Climate change: IPCC report is 'code red for humanity' - BBC News](#)

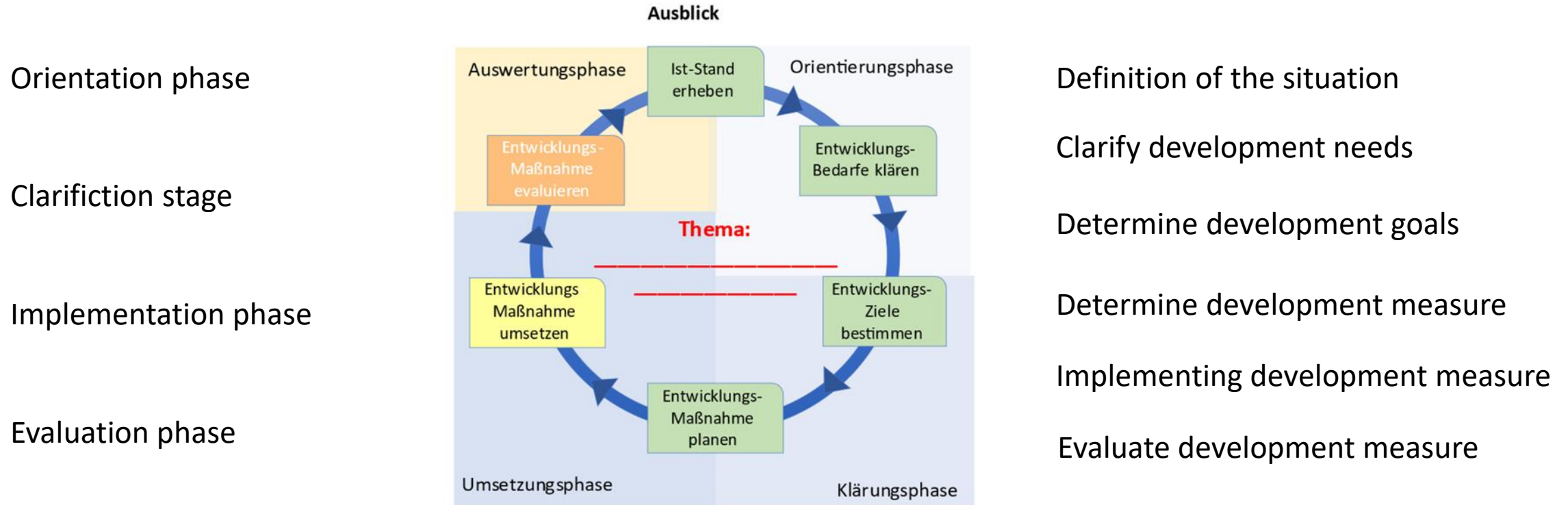


Five future impacts

- Temperatures will reach 1.5C above 1850-1900 levels by 2040 under all emissions scenarios
- The Arctic is likely to be practically ice-free in September at least once before 2050 in all scenarios assessed
- There will be an increasing occurrence of some extreme events "unprecedented in the historical record" even at warming of 1.5C
- Extreme sea level events that occurred once a century in the recent past are projected to occur at least annually at more than half of tidal gauge locations by 2100
- There will be likely increases in fire weather in many regions

[Climate change: IPCC report is 'code red for humanity' - BBC News](#)

School development



Steps of process development at school

