

30/4/2021

Weekly Highlights

Agriculture of Georgia 2020-According to the preliminary data of 2020, production of wheat increased by 0.6 percent compared to the same period of the previous year and consisted of 101.2 thousand tons. Production of barley decreased by 13.8 percent year-on-year set 46.1 thousand tons. Production of maize reached 263.0 thousand tons, which is 27.0 percent more than in the same period of the previous year. Production of potato increased by 10.8 percent and consisted of 215.7.thousand tons. Besides, production of vegetables equaled 180.1 thousand tons, which is 11.8 percent higher compared to 2019. Source: Geostat.ge

Exchange rate- As a result of April 15st, the value of one dollar became 3.4503 GEL and the value of one euro became 4.1818 GEL.

Covid 19- Confirmed coronavirus cases 310,310, within the past 24 hours - 1476; Recovered- 290,767, within the past 24 hours- 791; Fatal outcome- 4110, within the past 24 hours- 15.

Articles of the Week

"Pistachio Association": in 3-4 years Georgia will have locally produced pistachios

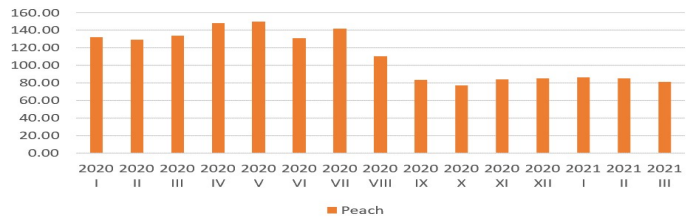
World production of pistachios is approaching a record high, the demand for it is growing, and leading countries are expanding production. For the 2020/21 season, according to the US Department of Agriculture, worldwide pistachio production is approaching a record 1 million tonnes. Compared to the previous season, production has increased by 40%.

Interest in pistachios is growing in Georgia as well. "Fiesta Association" has already been established in Georgia and gardens have been planted, the area of which is growing. Otar Anguridze, Vice-President of the Georgian Pistachio Association, says that Georgian Pistachio has great potential in the country and abroad due to its quality.

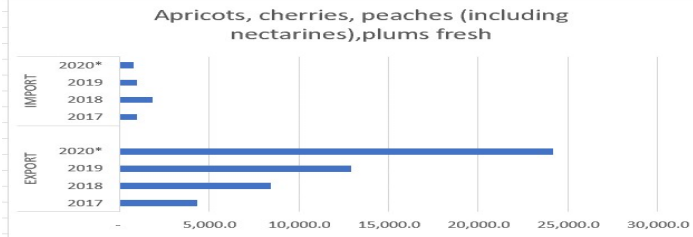
"It has been about 5 years since the popularization of this culture in the country. Pistachio gardens are growing every year and in about 3-4 years Georgia will have pistachios of local production. We expect that with the first harvest, the first export of pistachios from Georgia will be recorded. "Georgian fruit has special taste due to the good climate and water, which increases its competitiveness on the world market," - said Otar Anguridze.

Source: <https://bm.ge/ka/article/quotfistas-asociaciaquot-3-4-weliwadshi-saqartvelos-adgilobrivi-warmoebis-fista-eqneba-/81518/>

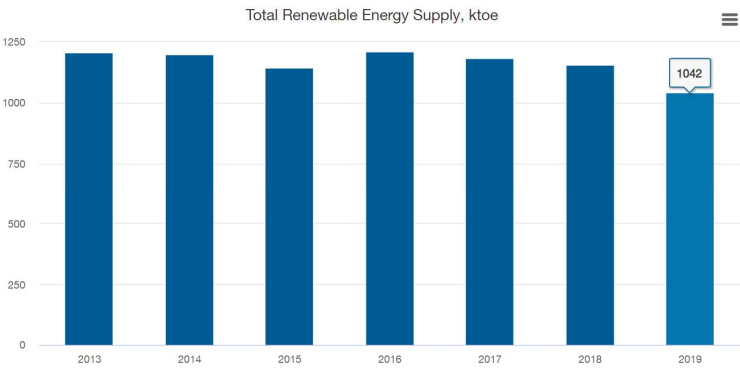
Detailed Consumer Price Indices (CPI) in Georgia 2020-2021 *previous month =100



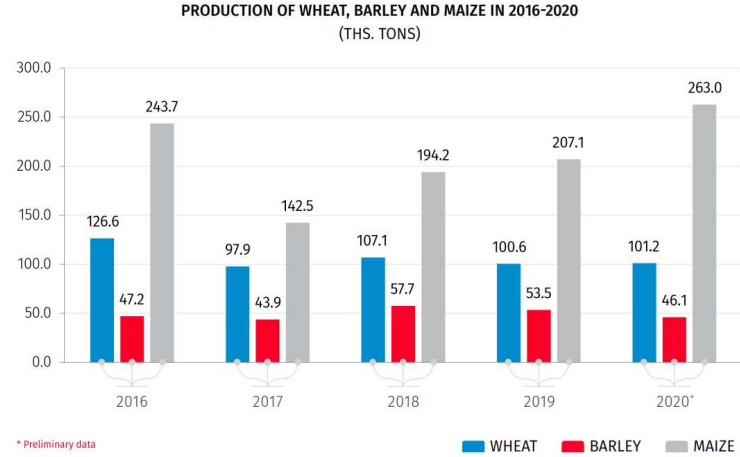
Import/Export of Georgia according to the positions of the Standard Classification of International Trade (SITC) 2020 *thousands of \$



Environmental indicators



Agricultural statistics



Governmental, Non-overnmental grants and subsidies of Agriculture

Co-financing of Processing and Storage Enterprises

Applications for the Processing Enterprise component will be accepted from 10 a.m. on April 20, 2021, till May 4, 2021 inclusive; Applications for the Savings Enterprise component will be accepted from 10 a.m. on May 13, 2021, till May 28, 2021 inclusive will be accepted electronically from February 17, 2020 (via the website rda.gov.ge).

The project is initiated by the Ministry of Environmental Protection and Agriculture of Georgia and is implemented by the Rural Development Agency with The State budget funding.

The project includes two components :

- Co-financing component of processing enterprises.
- Co-financing component of storage enterprises.

Processing and storage enterprises can be co-financed using the following sources :

- Agency co-financing - not more than 40% of the total cost of the project, but not more than 500,000 GEL;
- Preferential Agrocredit / leasing - not more than 1 500 000 GEL;
- Beneficiary's own co-participation and / or alternative financial source of project financing.

For more information: <http://enterprise.rda.gov.ge/guest/about>

Agricultural Report on Georgia #7

Agricultural commodities

Grains						
INDEX	UNITS	PRICE	CHANGE	%CHANGE	CONTRACT	TIME (EDT)
C1:COM Corn (CBOT)	USD/bu.	647.50	-0.75	-0.12%	Jul 2021	5:19 AM
W1:COM Wheat (CBOT)	USD/bu.	727.25	-1.75	-0.24%	Jul 2021	5:20 AM
O1:COM Oats (CBOT)	USD/bu.	404.75	+2.00	+0.50%	Jul 2021	4:38 AM
RR1:COM Rough Rice (CBOT)	USD/cwt	13.69	0.00	0.00%	Jul 2021	4/29/2021
S1:COM Soybean (CBOT)	USD/bu.	1,498.25	-4.00	-0.27%	Jul 2021	5:20 AM
SM1:COM Soybean Meal (CBOT)	USD/T.	420.40	-2.60	-0.61%	Jul 2021	5:20 AM
BO1:COM Soybean Oil (CBOT)	USD/lb.	59.74	-0.15	-0.25%	Jul 2021	5:18 AM
RS1:COM Canola (ICE)	CAD/MT	690.80	+0.90	+0.13%	Nov 2021	5:20 AM

Softs						
INDEX	UNITS	PRICE	CHANGE	%CHANGE	CONTRACT	TIME (EDT)
CC1:COM Cocoa (ICE)	USD/MT	2,490.00	-9.00	-0.36%	Jul 2021	5:16 AM
KC1:COM Coffee 'C' (ICE)	USD/lb.	143.60	+0.60	+0.42%	Jul 2021	5:19 AM
SB1:COM Sugar #11 (ICE)	USD/lb.	16.69	-0.24	-1.42%	Jul 2021	5:18 AM
JO1:COM Orange Juice (ICE)	USD/lb.	112.05	-1.95	-1.71%	Jul 2021	4/29/2021
CT1:COM Cotton #2 (ICE)	USD/lb.	86.58	+0.04	+0.05%	Jul 2021	5:16 AM
OL1:COM Wool (ASX)	---	---	---	---	N/A	---
LB1:COM Lumber (CME)	USD/1000 board feet	1,328.50	+32.00	+2.47%	Jul 2021	4/29/2021
OR1:COM Rubber (Singapore)	USD/kg	168.40	-0.20	-0.12%	Jul 2021	5:19 AM
DL1:COM Ethanol (CBOT)	USD/gal.	2.33	0.00	0.00%	May 2021	4/29/2021

Livestock						
INDEX	UNITS	PRICE	CHANGE	%CHANGE	CONTRACT	TIME (EDT)
LC1:COM Live Cattle (CME)	USD/lb.	116.05	+0.60	+0.52%	Jun 2021	4/29/2021
FC1:COM Feeder Cattle (CME)	USD/lb.	149.88	+0.98	+0.65%	Aug 2021	4/29/2021
LH1:COM Lean Hogs (CME)	USD/lb.	106.73	-2.40	-2.20%	Jun 2021	4/29/2021

Economic Data on Georgia									
GDP									
	2017	2018	2019	I 20*	II 20*	III 20*	IV 20*	2020*	
GDP at Current Prices, Bn €	40.8	44.6	49.3	11.1	11.1	13.3	13.9	49.4	
GDP at Constant 2015 prices, Bn €	36.6	38.4	40.3	9.1	8.8	9.8	10.2	37.8	
GDP Real Growth, Percentage	4.8	4.8	5	2.3	-13.2	-5.6	-6.8	-6.2	
GDP Deflator Change, Percentage	8.5	4.4	5.2	7.1	7.2	5.9	7.4	6.9	
GDP Per Capita (At Current Prices), €	10 933.9	11 968.0	13 239.4	2 974.3	2 990.2	3 586.7	3 741.6	13 292.7	
GDP Per Capita (At Current Prices), \$	4 358.5	4 722.0	4 696.2	1 016.3	952.9	1 156.2	1 144.1	4 274.6	
GDP at Current Prices, Bn US Dollars	16.2	17.6	17.7	3.8	3.6	4.3	4.3	15.9	
Share of Agriculture in GDP, Percentage	7.2	7.8	7.4			TBA			
Population & Unemployment									
	2016	2017	2018	2019	I 20*	II 20*	III 20*	IV 21*	
Economically Active Population (Workforce), Thousand People	1633.8	1641.2	1605.2	1572.8	1545.2	1515	1526.9	1505.7	
Employed, Thousand People	1294.5	1286.9	1295.9	1295.9	1262.7	1237.6	1269.11	1197.9	
Unemployed, Thousand People	359.2	354.5	309	276.9	282.6	277.4	259.8	307.8	
Unemployment Rate, Percentage	21.7	21.6	19.2	17.6	18.3	18.3	17	20.4	

Consumer Price Index (Inflation)						
	2015	2016	2017	2018	2019	2020
Annual Average to the Annual Average	104	102.1	106	102.6	104.9	105.2
December over Previous Year's December	104.9	101.8	106.7	101.5	107	102.4

Review of Agricultural product- Peach

The peach (*Prunus persica*) is a deciduous tree native to the region of Northwest China between the Tarim Basin and the north slopes of the Kunlun Mountains, where it was first domesticated and cultivated. It bears edible juicy fruits with various characteristics, most called peaches and others (the glossy-skinned varieties), nectarines. The specific name *persica* refers to its widespread cultivation in Persia (modern-day Iran), from where it was transplanted to Europe. It belongs to the genus Prunus, which includes the cherry, apricot, almond, and plum, in the rose family. The peach is classified with the almond in the subgenus *Amygdalus*, distinguished from the other subgenera by the corrugated seed shell. Due to their close relatedness, the kernel of a peach stone tastes remarkably similar to almond, and peach stones are often used to make a cheap version of marzipan, known as persipan. Peaches and nectarines are the same species, though they are regarded commercially as different fruits. The skin of nectarines lacks the fuzz (fruit-skin trichomes) that peach skin has; a mutation in a single gene (MYB25) is thought to be responsible for the difference between the two.



Autumn Red peaches, cross section showing freestone variety

Scientific classification

Kingdom: **Plantae**

Clade: **Tracheophytes**

Clade: **Angiosperms**

Clade: **Eudicots**

Clade: **Rosids**

Order: **Rosales**

Family: **Rosaceae**

Genus: ***Prunus***

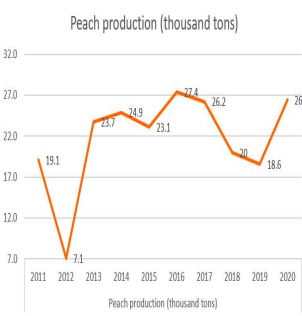
Subgenus: ***Prunus* subg. *Amygdalus***

Species: ***P. persica***

Binomial name

Prunus persica

(L.) Batsch 1801 not Stokes 1812 nor (L.) Siebold & Zucc. 1845^[1]



In Georgia, peach production is mainly carried out in small gardens. Most of the peach orchards are cultivated in Kakheti and Shida Kartli. It is noteworthy that in the last 15 years, the areas and production of peach orchards have increased significantly. Local peaches are supplied to the market from June to October. The main challenges for the development of this sector are quality improvement, development of packaging, storage, processing and transport infrastructure.

Overview of Global Peach Market (www.tridge.com)

Rank	Country	Country Share 2020	Export Value 2020	1-Year Growth in V 2019	3-Year Growth in V 2017	Weekly Domestic I 2021-04-26	Monthly Domestic 2021-04
1	Spain	50.27%	971.50M	+10.28%	+7.77%	+1.31%	+7.98%
2	Chile	8.74%	168.88M	+16.46%	+50.42%		
3	Italy	6.44%	124.40M	-16.85%	-36.01%		
4	United States	6.42%	124.15M	-6.17%	-2.58%	-0.5%	-16.8%
5	Greece	6%	116.03M	+32.56%	+30.81%		
6	Uzbekistan	3.36%	64.87M	+40.9%	+169.53%		
7	Hong Kong	2.49%	48.10M	+6.71%	+243.91%		
8	Netherlands	2.12%	40.93M	-7.76%	+3.36%		
9	South Africa	1.93%	37.39M	-0.57%	+11.13%	-11.48%	-14.56%
10	France	1.68%	32.55M	-30.92%	-61.31%		

Company description - LLC Achinebuli

LLC Achinebuli is an emerging fruit processor headquartered in the Telavi municipality in Georgia's Kakheti region. Operating since 2018 under the brand name ALALI, the company produces a line of all natural, cold-pressed fruit juices made with 100% Georgia-grown fruit. Catering primarily to individuals who embrace active and health-oriented lifestyles, all of their juices are free from GMOs, pesticides, artificial colors, and stabilizers. In order to deliver the best possible finished products, and maintain world-class standards of excellence, Achinebuli has developed unique recipes based on locally sourced peaches, grapes, and blackberries grown by farmers in the Kakheti region and apples from orchards in Shida and Kvemo Kartli. With 1680 m2 of operational space, the company is equipped with state-of-the-art processing equipment and cold-pressing facilities. While current production exceeds 500,000 liters, Achinebuli has the capacity to produce more than 2,500,000 liters of juice per year. We have selected five of the most flavorful and highly sought after Georgian fruits - Blackberry, Peach, Apple, Citrus and Grape - for our core offering at Alali. While other varieties including cherry, tomato and lemon are in development, these first five are the juices that have already met our high standards for quality, overall flavor, and nutritional content. All of the cold-pressed juices made at Alali are available in 0.250L and 1L glass bottles. For higher volume consumption they are also available in 3-liter pouches.

JV "GeoHolding & KSH" Consortium
Website: <https://www.ghksh.de/> Email: Mariam.burdiladze@llcgeoholding.eu ; Irakli.gogiberidze@llcgeoholding.eu
Facebook: <https://www.facebook.com/JV-GeoHolding-KSH-Consortium-109650230653196/>



This presentation is for information purposes only and does not constitute or form part of any offer to acquire, sell or otherwise dispose of, or issue, or any solicitation of any offer to sell or otherwise dispose of, purchase or subscribe for, any securities, nor does it constitute investment advice, nor shall it or any part of it nor the fact of its distribution form the basis of, or be relied on in connection with, any contract or investment decision. Certain statements in this presentation are forward looking statements. These forward looking statements are based on expectations and beliefs current as of the date of this presentation, and, by their nature, are subject to a number of known and unknown risks and uncertainties that could cause the actual results, performance and achievement to differ materially from any expected future results, performance or achievement expressed or implied by such forward looking statements. No representation, warranty or assurance (expressed or implied) is given or made by the forward looking statements contained in this presentation are accurate, complete, reliable or adequate or that they will be achieved or prove to be correct. The presentation disclaims any obligation or undertaking to disseminate any updates or revisions to any information contained in this presentation reflect any change in expectations, events, conditions or circumstances on which that information is based.

Disclaimer JV "GeoHolding & KSH" Consortium