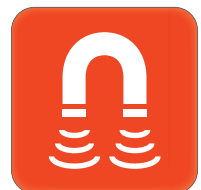


09/20  
rev 1.4

## DATA SHEET

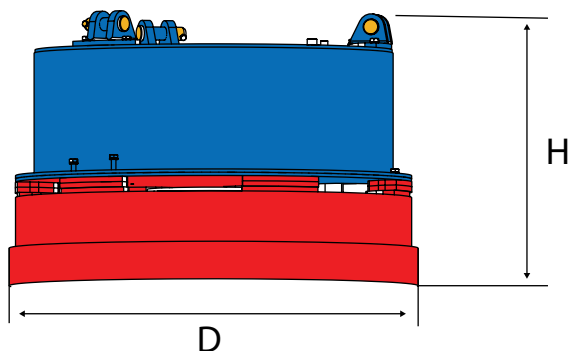
### HMAG PRO HYDRAULIC MAGNET



**HMAG PRO 700 - 21**  
**HMAG PRO 900 - 34**

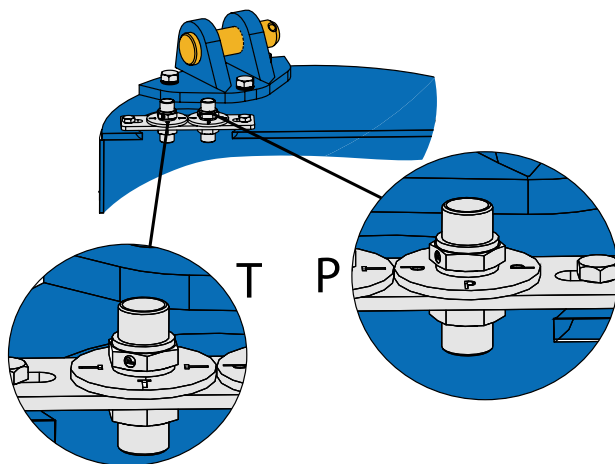
**HMAG PRO 1200 - 49**  
**HMAG PRO 1400 - 57**

### DIMENSIONS



MODEL	DIMENSIONS, mm (in)		WEIGHT
	ØD	H	kg (lbs)
<b>HMAG PRO 700 - 21</b>	750 (29.5)	640 (25.2)	440 (968)
<b>HMAG PRO 900 - 34</b>	960 (37.8)	780 (30.7)	900 (1980)
<b>HMAG PRO 1200- 49</b>	1260 (49.6)	830 (32.7)	1550 (3410)
<b>HMAG PRO 1400 - 57</b>	1450 (57.1)	780 (30.7)	2900 (6380)

### HYDRAULIC PORTS



MODEL	PRESSURE LINE	RETURN LINE
	P	T
<b>HMAG PRO 700 - 21</b>	BSP 1/2"	BSP 1/2"
<b>HMAG PRO 900 - 34</b>	BSP 1/2"	BSP 1/2"
<b>HMAG PRO 1200- 49</b>	BSP 1/2"	BSP 1/2"
<b>HMAG PRO 1400 - 57</b>	BSP 3/4"	BSP 1"

### TECHNICAL SPECIFICATIONS

		HMAG PRO 700 21	HMAG PRO 900 34	HMAG PRO 1200 49	HMAG PRO 1400 57
<b>OUTPUT CHARACTERISTICS</b>					
Generator power max.	<b>kW</b>	3	6	10	12
Magnet coil power max.	<b>KW</b>	2,7	5,5	9,5	11
Operating voltage	<b>VDC</b>	220±5%			
Operation control		Hydraulic			
Magnet coils allowed resistance (20 °C)	<b>Ohm</b>	16,1 ± 5%	9,8 ± 5%	5,4 ± 5%	4,8 ± 5%
Efficient duty rating	<b>ED%</b>	60	60	60	60
<b>NOMINAL LIFTING CAPACITY</b>					
Tear-off w/ air gap Ø/300	<b>kg (lbs)</b>	5500 (12100)	10500 (23100)	15000 (33000)	34000 (74800)
Slabs, blocks	<b>kg (lbs)</b>	2700 (5490)	5250 (11550)	7500 (16500)	9500 (20900)
Cast iron pigs	<b>kg (lbs)</b>	105 (231)	230 (506)	410 (902)	1100 (2420)
Scrap, <b>kg (lbs)</b>	<b>grade 3A</b>	80 (176)	200 (440)	370 (814)	1000 (2200)
	<b>grade 24</b>	70 (154)	190 (418)	360 (792)	900 (1980)
	<b>grade 40</b>	40 (88)	100 (220)	190 (418)	480 (1050)
<b>HYDRAULIC POWER REQUIREMENTS</b>					
Flow min.	<b>l/min (gpm)</b>	23 (6.7)	37 (9.8)	53 (14.0)	63 (16.6)
Required system pressure min.	<b>bar (psi)</b>	190 (2800)	190 (2800)	190 (2800)	190 (2800)
Pressure max.	<b>bar (psi)</b>	350 (5000)	350 (5000)	350 (5000)	350 (5000)
<b>HYDRAULIC FLUID REQUIREMENTS</b>					
Viscosity	<b>cSt</b>	10-200 / optimum 25-35			
Temperature	<b>°C (°F)</b>	max. 70 (158)*			
Filter ratio	<b>um</b>	25 or better			
Cooling capacity requirements	<b>kW</b>	1,4	2,4	3,1	3,5

Gallons are U.S. liquid gallons

\* Depending on the hydraulic fluid.

Other options available by request.



Menotie 3  
FI-33470 Ylöjärvi, Finland  
tel: +358 3 3488 200  
info@dynaset.com



#### ELECTRICITY

HG Hydraulic Generator  
HGV Variable Hydraulic Generator  
HWG Hydraulic Welding Generator  
HGG Hydraulic Ground Power Generator



#### MAGNET POWER

HMG Hydraulic Magnet Generator  
HMAG Hydraulic Magnet  
MAG Lift Magnet



#### HIGH PRESSURE WATER

HPW Hydraulic High Pressure Water Pump  
HPW Hydraulic Power Washer  
KPL High Pressure Street Washing Unit  
PPL High Pressure Pipe Cleaning Unit  
HPW-DUST High Pressure Dust Suppression System  
HPW-FIRE High Pressure Firefighting System  
FP Fire Fighting Piercing Kit  
HDF Hydraulic Drilling Fluid Pump  
JPL High Pressure Bin Washing System  
HSP Hydraulic Submersible Pump



#### VIBRATION

HVB Hydraulic Vibra  
HVD Hydraulic Directional Vibra



#### POWER BOOSTING

HPI Hydraulic Pressure Intensifier  
HPI-C Hydraulic Pressure Intensifier for Cylinder



#### COMPRESSED AIR

HK Hydraulic Compressor (piston)  
HKL Hydraulic Rotary Vane Compressor  
HKR Hydraulic Screw Compressor



#### KNOW-HOW

HHK Hydraulic Grinder  
HV/HVY Hydraulic Winch / Winch Unit  
Hydraulic Power Take-off (PTO)  
Hydraulic Power Unit Technology  
De-Icing Technology  
Installation Valves

[www.dynaset.com](http://www.dynaset.com)





## TABLE OF CONTENTS

### HMG PRO

HMG PRO 3kW

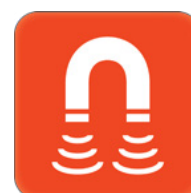
HMG PRO 6-10kW

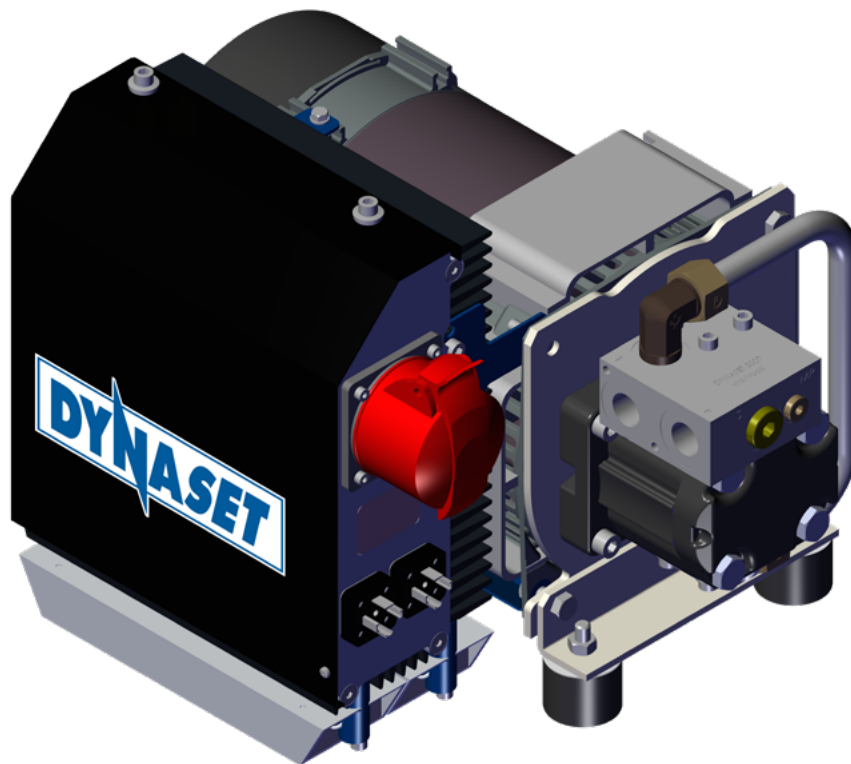
HMG PRO 12kW

HMG PRO 15-20kW

HMG PRO 30-40kW

**DATA SHEETS**  
**HMG PRO HYDRAULIC MAGNET GENERATORS**





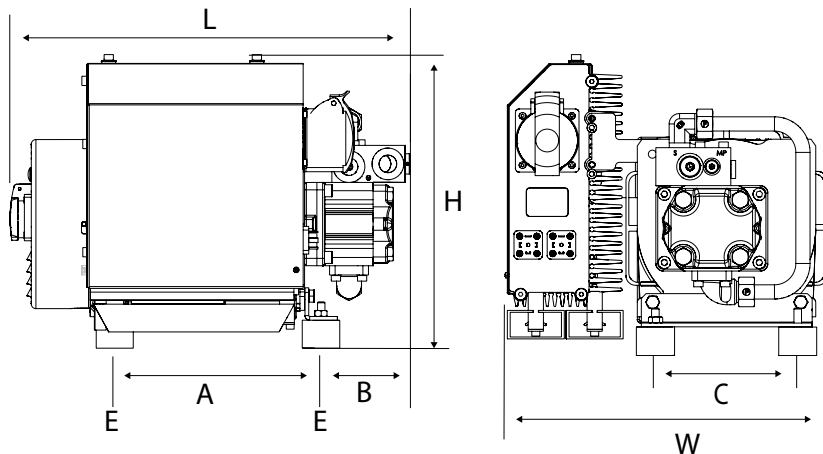
12/18  
rev 1.4

**DATA SHEET**  
**HMG/CMG PRO HYDRAULIC MAGNET GENERATOR**



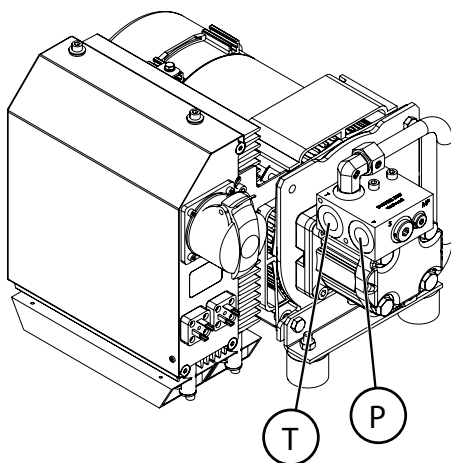
**HMG PRO 3kW-220VDC-21**

### DIMENSIONS



MODEL	DIMENSIONS, mm (in)							WEIGHT
	L	W	H	A	B	C	E	kg (lbs)
HMG PRO 3kW-220VDC-21	431 (17.0)	337 (13.3)	317 (12.5)	223 (8.8)	96 (3.8)	150 (5.9)	M8	34 (75)
CMG PRO 3kW-220VDC-21	491 (19.3)	337 (13.3)	300 (11.8)	223 (8.8)	156 (6.1)	150 (5.9)	M8	34 (75)

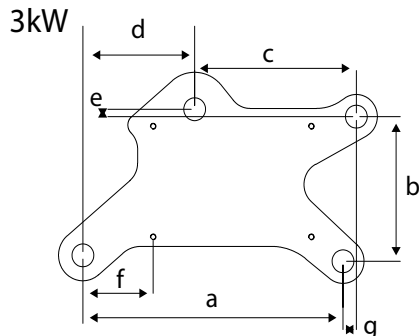
**Notice!** Measurements may change if optional accessories are installed.



### HYDRAULIC PORTS

MODEL	PRESSURE LINE	RETURN LINE
	P	T
HMG PRO 3kW-220VDC-21	BSP 1/2"	BSP 1/2"
CMG PRO 3kW-220VDC-21	BSP 1/2"	BSP 1/2"

### CMG ATTACHMENT PLATE (IF INCLUDED)



DIMENSIONS, mm (in)						
a	b	c	d	e	f	g
370 (14.57)	196 (7.72)	230 (9.06)	159 (6.26)	10 (0.39)	100 (3.94)	19 (0.75)

### TECHNICAL SPECIFICATIONS

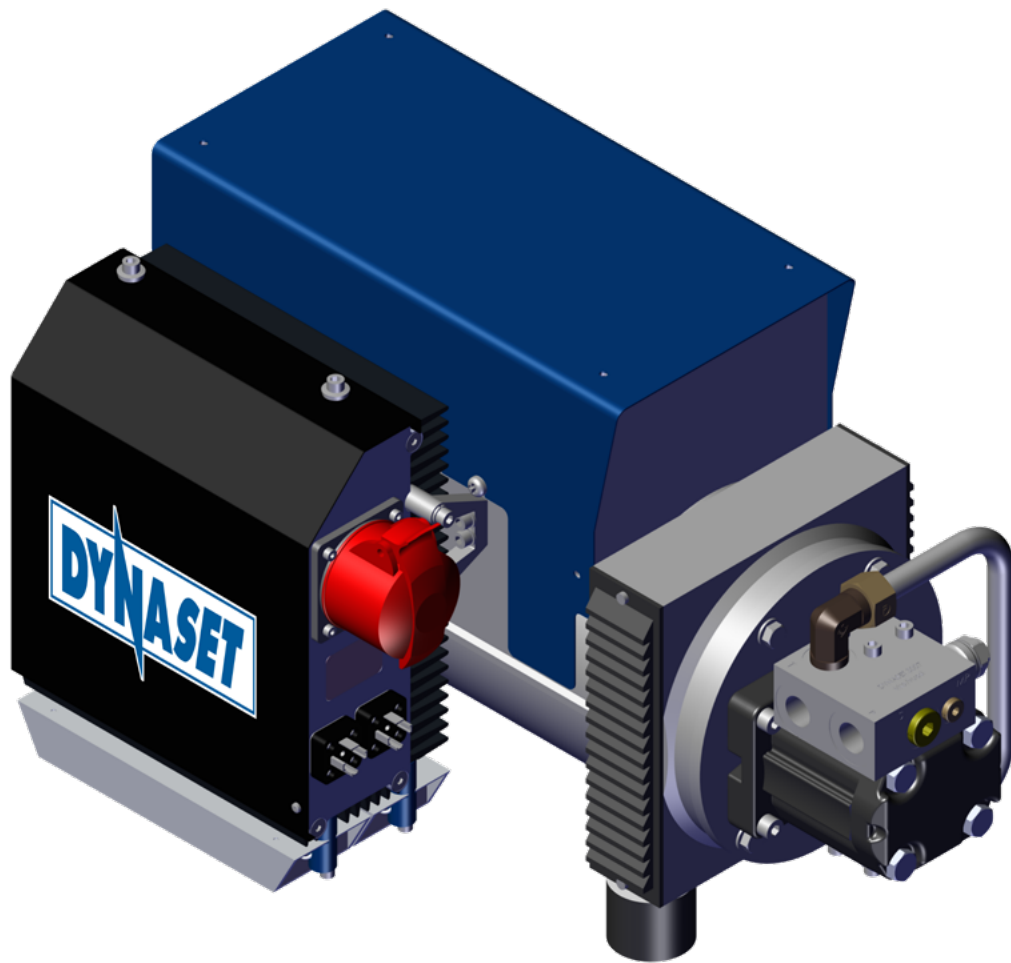
		HMG/CMG PRO 3kW-220VDC-21	
<b>OUTPUT CHARACTERISTICS</b>			
Generator power max.	<b>kW</b>	3	
Magnet coil power max.	<b>kW</b>	0,5 - 3	
Magnet coil resistance (20 °C)	<b>Ohm</b>	15 - 100	
Operating voltage	<b>VDC</b>	220±5%	
Auxiliary electricity		Optional	
Operating control voltage	<b>VDC</b>	6 - 32*	
<b>HYDRAULIC POWER REQUIREMENTS</b>		<b>HMG</b>	<b>CMG</b>
Flow min.	<b>l/min (gpm)</b>	23 (6.1)	23 (6.1)
Flow max.	<b>l/min (gpm)</b>	37 (9.8)	Flow limited internally
Pressure at nominal power output	<b>bar (psi)</b>	210 (3000)	210 (3000)
Pressure max.	<b>bar (psi)</b>	210 (3000)	350 (5100)
Pressure when unloaded	<b>bar (psi)</b>	50 (730)	50 (730)
Return line pressure max.	<b>bar (psi)</b>	5 (73)	5 (73)
<b>HYDRAULIC FLUID REQUIREMENTS</b>			
Viscosity	<b>cSt</b>	10-200 / optimum 25-35	
Temperature	<b>°C (°F)</b>	max. 70 (158)**	
Filter ratio	<b>um</b>	25 or better	
Cooling capacity requirements	<b>kW</b>	1,2	

Gallons are U.S. liquid gallons

\* Only with HMG PRO

\*\* Depending on the hydraulic fluid.





12/18  
rev 1.3

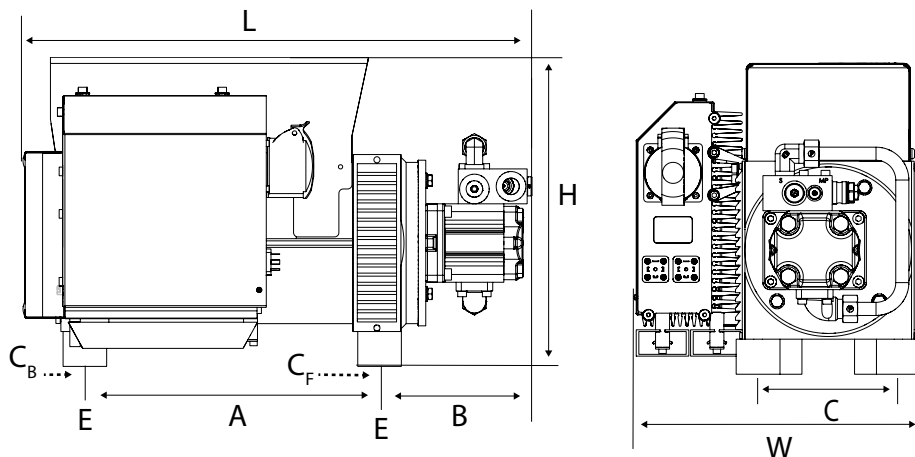
## DATA SHEET

### HMG/CMG PRO HYDRAULIC MAGNET GENERATOR



HMG/CMG PRO 6kW-220VDC-34  
HMG/CMG PRO 10kW-220VDC-49

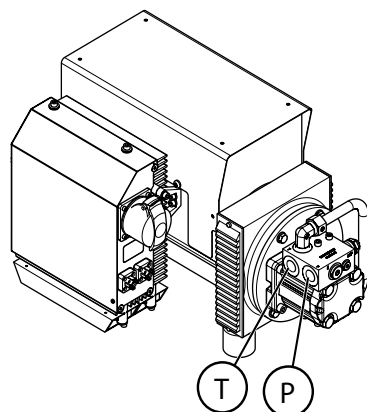
### DIMENSIONS



MODEL	DIMENSIONS, mm (in)							WEIGHT	
	L	W	H	A	B	C <sub>F</sub>	C <sub>B</sub>	E	kg (lbs)
HMG PRO 6kW-220VDC-34	526 (20.7)	326 (12.9)	351 (13.9)	283 (11.1)	178 (7.0)	160 (6.3)	110 (4.3)	M8	58 (128)
CMG PRO 6kW-220VDC-34	598 (23.5)	326 (12.9)	337 (13.2)	283 (11.1)	239 (9.4)	160 (6.3)	110 (4.3)	M8	58 (128)
HMG PRO 10kW-220VDC-49	582 (23.0)	325 (12.8)	355 (14.0)	338 (13.3)	175 (6.9)	160 (6.3)	110 (4.3)	M8	60 (132)
CMG PRO 10kW-220VDC-49	655 (25.8)	325 (12.8)	325 (12.8)	338 (13.3)	234 (9.2)	160 (6.3)	110 (4.3)	M8	60 (132)

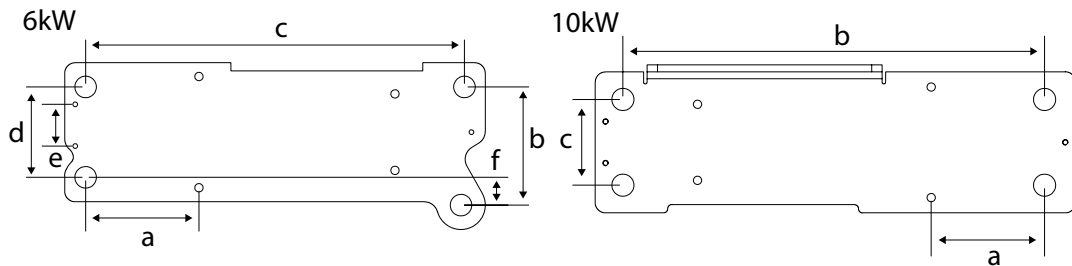
Notice! Measurements may change if optional accessories are installed.

### HYDRAULIC PORTS



MODEL	PRESSURE LINE	RETURN LINE
	P	T
HMG/CMG PRO 6kW-220VDC-34	BSP 1/2"	BSP 1/2"
HMG/CMG PRO 10kW-220VDC-49	BSP 1/2"	BSP 1/2"

### CMG ATTACHMENT PLATE (IF INCLUDED)



MODEL	DIMENSIONS, mm (in)					
	a	b	c	d	e	f
CMG PRO 6kW-220VDC-34	163 (6.42)	170 (6.69)	540 (21.26)	130 (6.26)	60 (2.36)	40 (1.57)
CMG PRO 10kW-220VDC-49	164 (6.42)	610 (24.02)	124 (4.88)	-	-	-

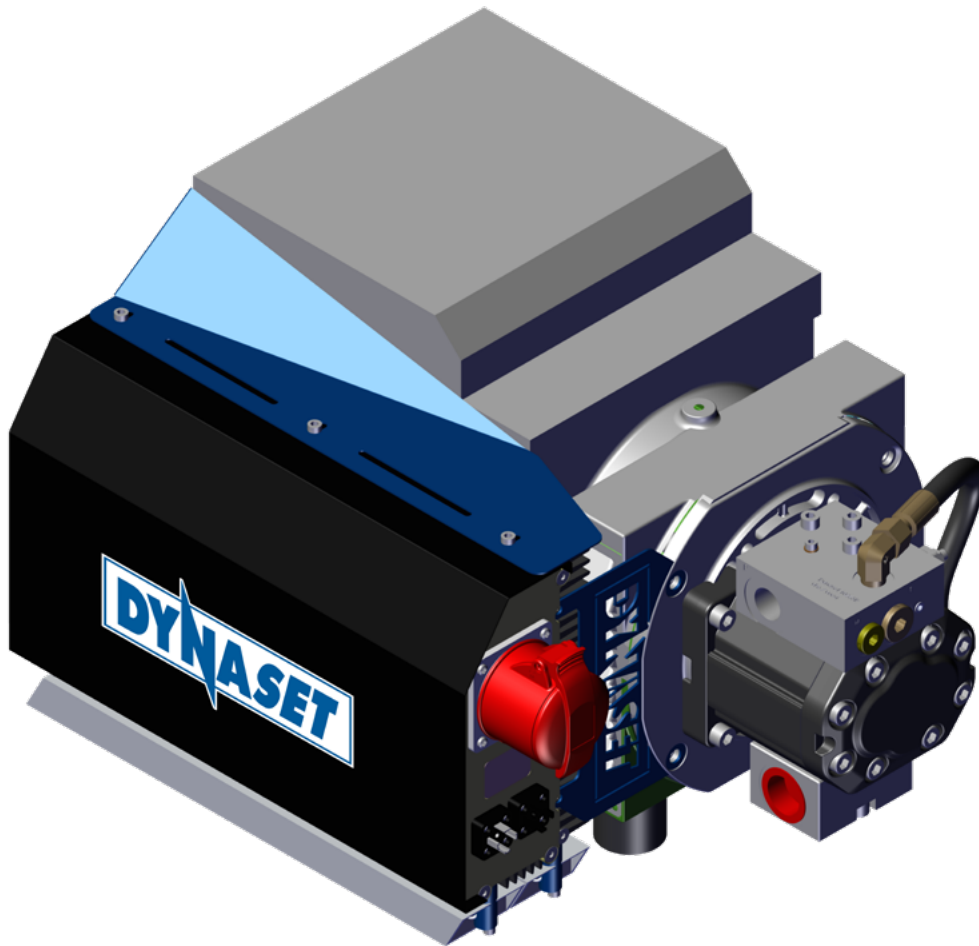
### TECHNICAL SPECIFICATIONS

		HMG/CMG PRO 6kW-220VDC-34	HMG/CMG PRO 10kW-220VDC-49		
<b>OUTPUT CHARACTERISTICS</b>					
Generator power max.	<b>kW</b>	6	10		
Magnet coil power max.	<b>KW</b>	0,5 - 5,5	1,0 - 9,1		
Magnet coil resistance (20 °C)	<b>Ohm</b>	8,8 - 100	5,4 - 100		
Operating voltage	<b>VDC</b>	220±5%			
Auxiliary electricity		Optional			
Operating control voltage	<b>VDC</b>	6 - 32*			
<b>HYDRAULIC POWER REQUIREMENTS</b>		<b>HMG PRO</b>	<b>CMG PRO</b>	<b>HMG PRO</b>	<b>CMG PRO</b>
Flow min.	<b>l/min (gpm)</b>	37 (9.8)	37 (9.8)	53 (14.0)	53 (14.0)
Flow max.	<b>l/min (gpm)</b>	53 (14.0)	Flow limited internally	68 (18.0)	Flow limited internally
Pressure at nominal power output	<b>bar (psi)</b>	160 (2300)	160 (2300)	200 (2900)	200 (2900)
Pressure max.	<b>bar (psi)</b>	210 (3000)	350 (5100)	350 (5100)	350 (5100)
Pressure when unloaded	<b>bar (psi)</b>	50 (730)	50 (730)	50 (730)	50 (730)
Return line pressure max.	<b>bar (psi)</b>	5 (73)	5 (73)	5 (73)	5 (73)
<b>HYDRAULIC FLUID REQUIREMENTS</b>					
Viscosity	<b>cSt</b>	10-200 / optimum 25-35			
Temperature	<b>°C (°F)</b>	max. 70 (158)**			
Filter ratio	<b>um</b>	25 or better			
Cooling capacity requirements	<b>kW</b>	2,1		2,8	

Gallons are U.S. liquid gallons

\* Only with HMG PRO

\*\* Depending on the hydraulic fluid.



12/18  
REV 1.3

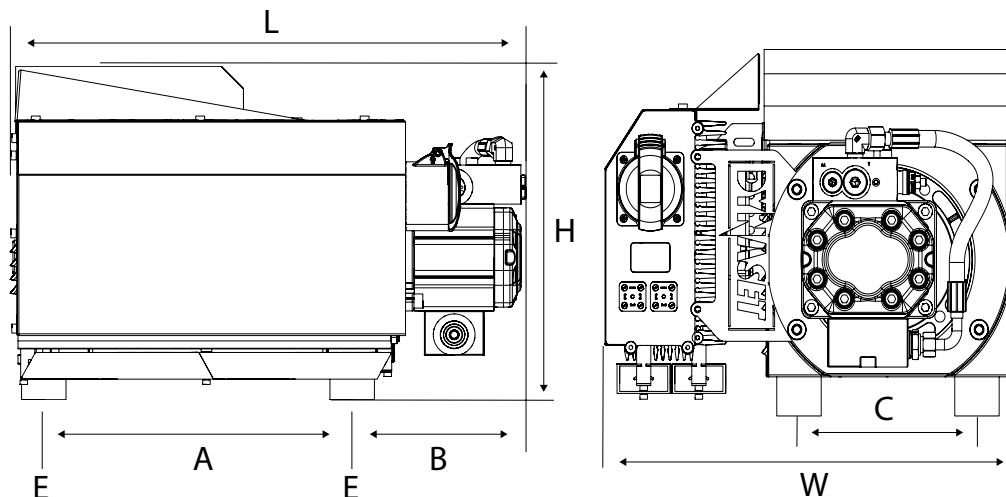
# DATA SHEET

## HMG/CMG PRO HYDRAULIC MAGNET GENERATOR



HMG/CMG PRO 12kW-220VDC-59

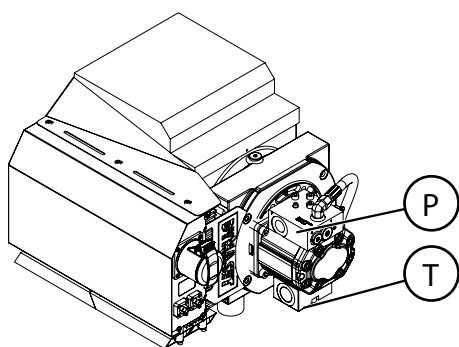
### DIMENSIONS



MODEL	DIMENSIONS, mm (in)							WEIGHT
	L	W	H	A	B	C	E	kg (lbs)
HMG/CMG PRO 12kW-220VDC-59	580 (22.8)	460 (18.1)	375 (14.8)	347 (13.7)	196 (7.7)	200 (7.8)	Ø12 (0.5)	100 (220)

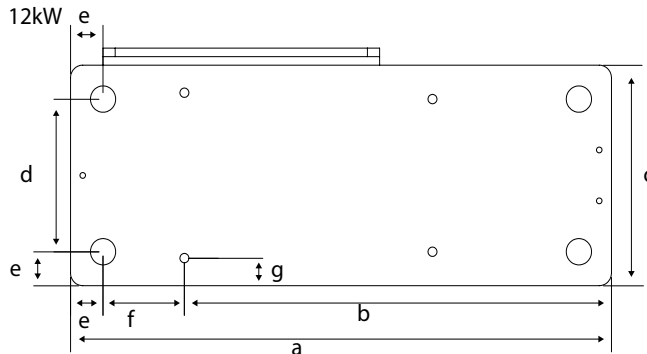
**Notice!** Measurements may change if optional accessories are installed.

### HYDRAULIC PORTS



MODEL	PRESSURE LINE	RETURN LINE
HMG/CMG PRO 12kW-220VDC-59	P BSB 3/4"	T BSB 1"

### CMG ATTACHMENT PLATE (IF INCLUDED)



MODEL	DIMENSIONS, mm (in)						
	a	b	c	d	e	f	g
HMG/CMG PRO 12kW-220VDC-59	665 (26.18)	305 (12.01)	260 (10.24)	180 (7.09)	40 (1.57)	100 (3.94)	32,5 (1.28)

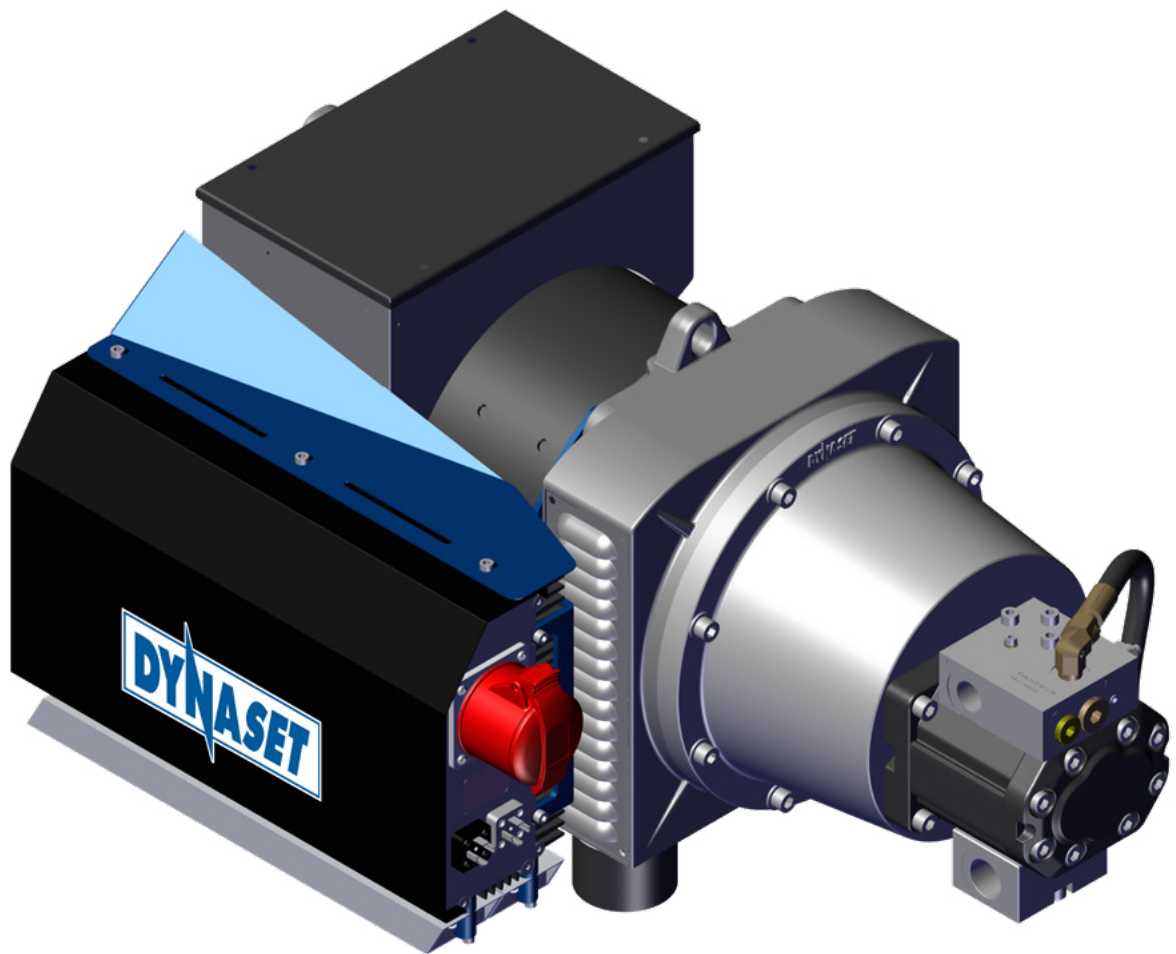
### TECHNICAL SPECIFICATIONS

		HMG/CMG PRO 12kW-220VDC-59	
<b>OUTPUT CHARACTERISTICS</b>			
Generator power max.	<b>kW</b>	12	
Magnet coil power max.	<b>kW</b>	1,0 - 11	
Magnet coil resistance (20 °C)	<b>Ohm</b>	4,5 - 50	
Operating voltage	<b>VDC</b>	220 ± 5%	
Auxiliary electricity		Optional	
Operating control voltage	<b>VDC</b>	6 - 32*	
<b>HYDRAULIC POWER REQUIREMENTS</b>		<b>HMG PRO</b>	<b>CMG PRO</b>
Flow min.	<b>l/min (gpm)</b>	63 (16.6)	63 (16.6)
Flow max.	<b>l/min (gpm)</b>	77 (20.3)	Flow limited internally
Pressure at nominal power output	<b>bar (psi)</b>	200 (2900)	200 (2900)
Pressure max.	<b>bar (psi)</b>	210 (3000)	350 (5100)
Pressure when unloaded	<b>bar (psi)</b>	40 (580)	40 (580)
Return line pressure max.	<b>bar (psi)</b>	5 (73)	5 (73)
<b>HYDRAULIC FLUID REQUIREMENTS</b>			
Viscosity	<b>cSt</b>	10-200 / optimum 25-35	
Temperature	<b>°C (°F)</b>	max. 70 (158)**	
Filter ratio	<b>um</b>	25 or better	
Cooling capacity requirements	<b>kW</b>	3,2	

Gallons are U.S. liquid gallons

\* Only with HMG PRO

\*\* Depending on the hydraulic fluid.



12/18  
rev 1.4

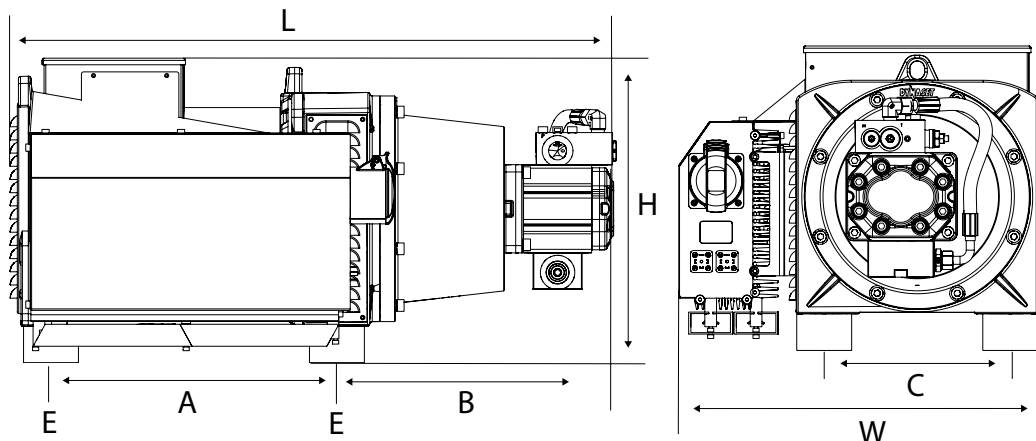
# DATA SHEET

## HMG/CMG PRO HYDRAULIC MAGNET GENERATOR



HMG/CMG PRO15kW-220VDC-65  
HMG/CMG PRO 20kW-220VDC-86

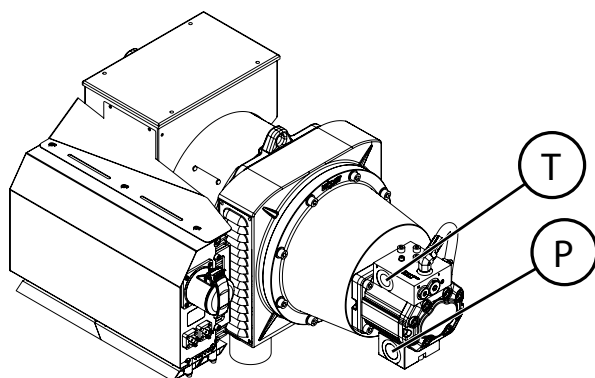
### DIMENSIONS



MODEL	DIMENSIONS, mm (in)							WEIGHT
	L	W	H	A	B	C	E	
HMG/CMG PRO 15kW-220VDC-65	828 (32.6)	501 (19.7)	416 (16.4)	390 (15.4)	382 (15.0)	254 (10.0)	M12	145 (320)
HMG/CMG PRO 20kW-220VDC-86	878 (34.6)	511 (20.1)	416 (16.4)	430 (16.9)	393 (15.5)	254 (10.0)	M12	163 (359)

**Notice!** Measurements may change if optional accessories are installed.

### HYDRAULIC PORTS



MODEL	PRESSURE LINE	RETURN LINE
	P	T
HMG/CMG PRO 15kW-220VDC-65	BSB 3/4"	BSB 1"
HMG/CMG PRO 20kW-220VDC-86	BSB 3/4"	BSB 1"



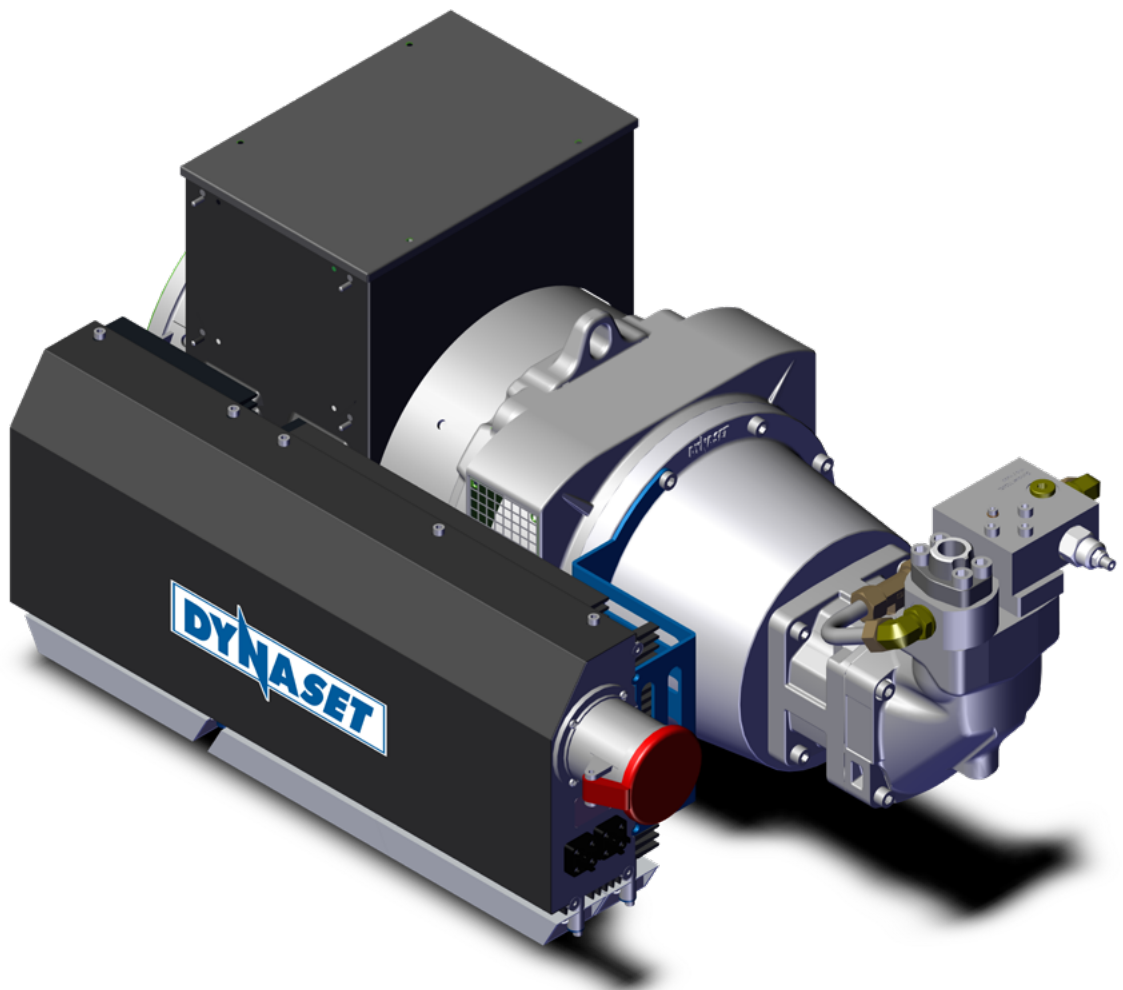
### TECHNICAL SPECIFICATIONS

		HMG/CMG PRO 15kW 65	HMG/CMG PRO 20kW 92		
<b>OUTPUT CHARACTERISTICS</b>					
Generator power max.	<b>kW</b>	15	20		
Magnet coil power max.	<b>KW</b>	13,5	18,6		
Magnet coil resistance (20 °C)	<b>Ohm</b>	3,6 -50	2,6 - 50		
Operating voltage	<b>VDC</b>	220±5%			
Auxiliary electricity		Optional			
Operating control voltage	<b>VDC</b>	6 - 32*			
<b>HYDRAULIC POWER REQUIREMENTS</b>					
		<b>HMG PRO</b>	<b>CMG PRO</b>	<b>HMG PRO</b>	<b>CMG PRO</b>
Flow min.	<b>l/min (gpm)</b>	67 (17.7)	67 (17.7)	94 (24.9)	94 (24.9)
Flow max.	<b>l/min (gpm)</b>	95 (25.1)	Flow limited internally	110 (29.0)	Flow limited internally
Pressure at nominal power output	<b>bar (psi)</b>	190 (2750)	190 (2750)	190 (2750)	190 (2750)
Pressure max.	<b>bar (psi)</b>	210 (3000)	350 (5100)	210 (3000)	350 (5100)
Pressure when unloaded	<b>bar (psi)</b>	40 (580)	40 (580)	30 (440)	30 (440)
Return line pressure max.	<b>bar (psi)</b>	5 (73)	5 (73)	5 (73)	5 (73)
<b>HYDRAULIC FLUID REQUIREMENTS</b>					
Viscosity	<b>cSt</b>	10-200 / optimum 25-35			
Temperature	<b>°C (°F)</b>	max. 70 (158)**			
Filter ratio	<b>um</b>	25 or better			
Cooling capacity require- ments	<b>kW</b>	3,6		4,0	

Gallons are U.S. liquid gallons

\* Only with HMG PRO

\*\* Depending on the hydraulic fluid.



12/18  
rev 1.3

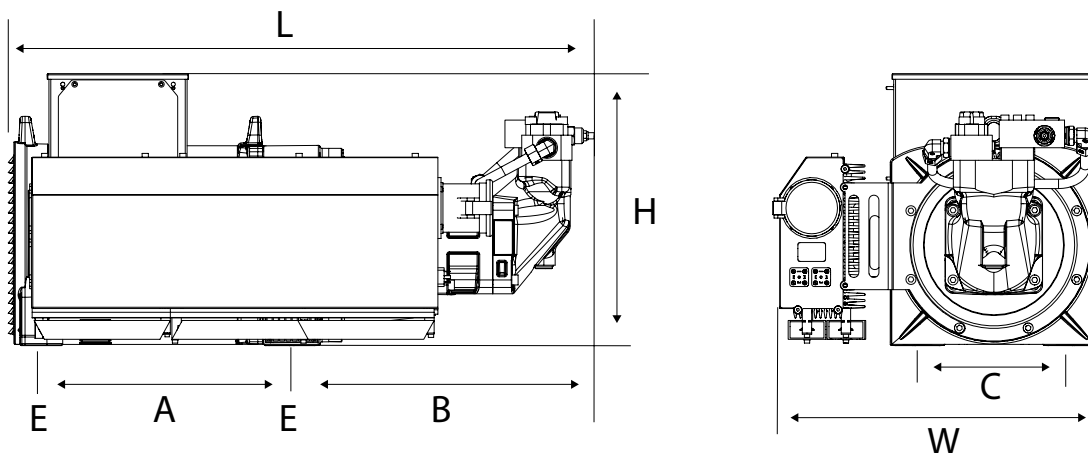
# DATA SHEET

## HMG/CMG PRO HYDRAULIC MAGNET GENERATOR



HMG/CMG PRO 30kW-220VDC-120  
HMG/CMG PRO 40kW-220VDC-165

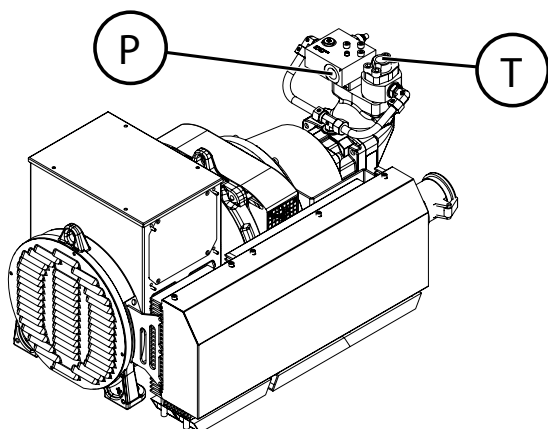
### DIMENSIONS



MODEL	DIMENSIONS, mm (in)							WEIGHT	
	L	W	H	A	B	C	D	E	kg (lbs)
HMG/CMG PRO 30kW-220VDC-120	933 (36.7)	515 (20.3)	450 (17.7)	386 (15.2)	482 (19.0)	254 (10.0)	304 (12.0)	M12	175 (386)
HMG/CMG PRO 40kW-220VDC-165	1003 (39.5)	600 (23.6)	600 (23.6)	166 (6.5)	510 (20.1)	340 (13.4)	304 (12.0)	M16	198 (437)

Notice! Measurements may change if optional accessories are installed.

### HYDRAULIC PORTS



MODEL	PRESSURE LINE	RETURN LINE
	P	T
HMG/CMG PRO 30kW-220VDC-120	BSB 3/4"	BSB 3/4"
HMG/CMG PRO 40kW-220VDC-165	BSB 3/4"	BSB 3/4"

### TECHNICAL SPECIFICATIONS

		HMG/CMG PRO 30kW-220VDC-120	HMG/CMG PRO 40kW-220VDC-165		
<b>OUTPUT CHARACTERISTICS</b>					
Generator power max.	<b>kW</b>	30	40		
Magnet coil power max.	<b>KW</b>	29,5	39,5		
Magnet coil resistance (20 °C)	<b>Ohm</b>	1,8 - 100	1,3 - 100		
Operating voltage	<b>VDC</b>	220±5%			
Auxiliary electricity		Optio			
Operating control voltage	<b>VDC</b>	6 - 32			
<b>HYDRAULIC POWER REQUIREMENTS</b>		<b>HMG PRO</b>	<b>CMG PRO</b>	<b>HMG PRO</b>	<b>CMG PRO</b>
Flow min.	<b>l/min (gpm)</b>	122 (32.2)	122 (32.2)	167 (44.1)	167 (44.1)
Flow max.	<b>l/min (gpm)</b>	140 (37.0)	Flow limited internally	185 (49.0)	Flow limited internally
Pressure at nominal power output	<b>bar (psi)</b>	190 (2750)	190 (2750)	190 (2750)	190 (2750)
Pressure max.	<b>bar (psi)</b>	210 (3000)	350 (5100)	210 (3000)	350 (5100)
Pressure when unloaded	<b>bar (psi)</b>	40 (580)	40 (580)	30 (440)	30 (440)
Return line pressure max.	<b>bar (psi)</b>	5 (73)	5 (73)	5 (73)	5 (73)
<b>HYDRAULIC FLUID REQUIREMENTS</b>					
Viscosity	<b>cSt</b>	100-200 / optimum 25-35			
Temperature	<b>°C (°F)</b>	max. 70 (158)**			
Filter ratio	<b>µm</b>	25 or better			
Cleanliness level	<b>ISO 4406</b>	19/17/14			
Cooling capacity requirements	<b>kW</b>	7,8	8,5		

Gallons are U.S. liquid gallons

\* Only with HMG PRO

\*\* Depending on the hydraulic fluid.



Menotie 3  
FI-33470 Ylöjärvi, Finland  
tel: +358 3 3488 200  
info@dynaset.com



#### ELECTRICITY

HG Hydraulic Generator  
HGV Variable Hydraulic Generator  
HWG Hydraulic Welding Generator  
HGG Hydraulic Ground Power Generator



#### MAGNET POWER

HMG Hydraulic Magnet Generator  
HMAG Hydraulic Magnet  
MAG Lift Magnet



#### HIGH PRESSURE WATER

HPW Hydraulic High Pressure Water Pump  
HPW Hydraulic Power Washer  
KPL High Pressure Street Washing Unit  
PPL High Pressure Pipe Cleaning Unit  
HPW-DUST High Pressure Dust Suppression System  
HPW-FIRE High Pressure Firefighting System  
FP Fire Fighting Piercing Kit  
HDF Hydraulic Drilling Fluid Pump  
JPL High Pressure Bin Washing System  
HSP Hydraulic Submersible Pump



#### VIBRATION

HVB Hydraulic Vibra  
HVD Hydraulic Directional Vibra



#### POWER BOOSTING

HPI Hydraulic Pressure Intensifier  
HPI-C Hydraulic Pressure Intensifier for Cylinder



#### COMPRESSED AIR

HK Hydraulic Compressor (piston)  
HKL Hydraulic Rotary Vane Compressor  
HKR Hydraulic Screw Compressor

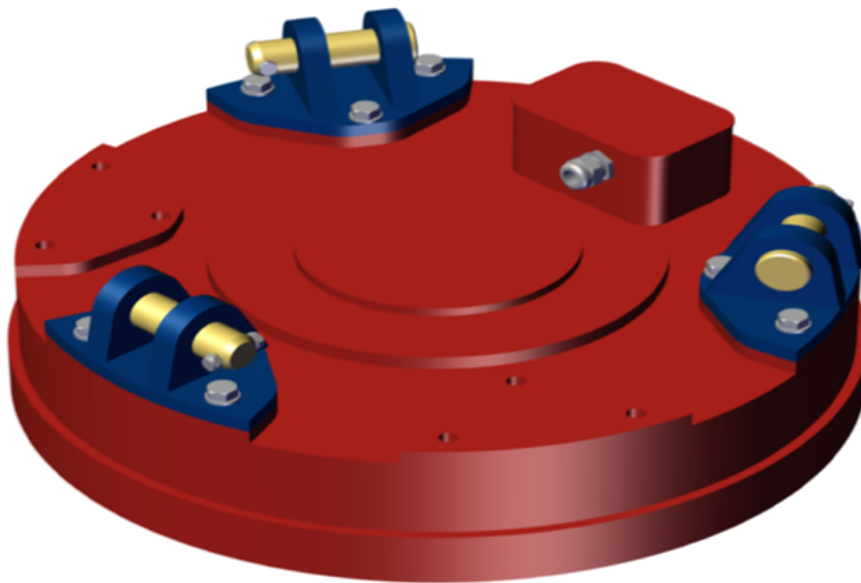


#### KNOW-HOW

HHK Hydraulic Grinder  
HV/HVY Hydraulic Winch / Winch Unit  
Hydraulic Power Take-off (PTO)  
Hydraulic Power Unit Technology  
De-Icing Technology  
Installation Valves

[www.dynaset.com](http://www.dynaset.com)





## DATA SHEET

### MAG LIFT MAGNET

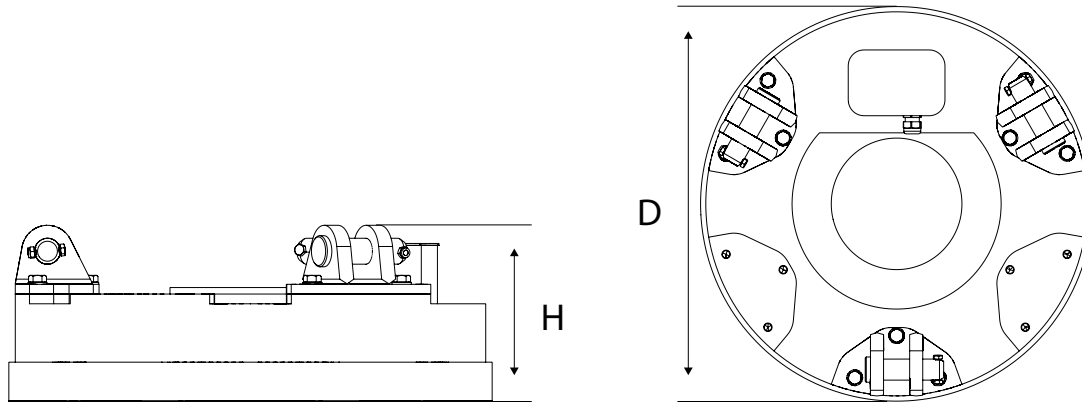


**MAG 700UL**  
**MAG 900L**  
**MAG 1000M**

**MAG1200L**  
**MAG 1400L**  
**MAG 1500H**

**MAG 1600M**  
**MAG 1600H**  
**MAG 1800H**

### DIMENSIONS



MODEL	DIMENSIONS, mm (in)		WEIGHT
	ØD	H	kg (lbs)
<b>MAG 700 UL</b>	750 (29.5)	215 (8.5)	290 (638)
<b>MAG 900 L</b>	960 (37.8)	280 (11.0)	650 (1430)
<b>MAG 1000 L</b>	1050 (41.3)	300 (11.8)	850 (1760)
<b>MAG 1200 L</b>	1260 (49.6)	305 (12.0)	1100 (2420)
<b>MAG 1400 L</b>	1400 (57.1)	285 (11.2)	1400 (3080)
<b>MAG 1500 H</b>	1550 (61.0)	390 (15.4)	2950 (6420)
<b>MAG 1600 M</b>	1650 (65.0)	365 (14.4)	3300 (7260)
<b>MAG 1600 H</b>	1670 (65.7)	420 (16.5)	3850 (8470)
<b>MAG 1800 H</b>	1840 (72.4)	450 (17.7)	4350 (9570)

### TECHNICAL SPECIFICATIONS

		MAG 700 UL	MAG 900 L	MAG 1000 M	MAG 1200 L
<b>OUTPUT CHARACTERISTICS</b>					
Magnet coil power max.	<b>KW</b>	3,0	4,9	5,5	9,0
Operating voltage	<b>VDC</b>	220±5%			
Magnet coils allowed resistance (20 °C)	<b>Ohm</b>	16.1 ± 5%	9.9 ± 5%	8.8 ± 5%	5,4 ± 5%
<b>NOMINAL LIFTING CAPACITY</b>					
Tear-off w/ air gap Ø/300	<b>kg (lbs)</b>	5500 (12100)	10500 (23100)	16000 (35200)	15000 (33000)
Slabs, blocks	<b>kg (lbs)</b>	2700 (5490)	5250 (11550)	8000 (17600)	7500 (16500)
Cast iron pigs	<b>kg (lbs)</b>	105 (231)	230 (506)	350 (770)	410 (902)
Scrap, kg (lbs)	<b>grade 3A</b>	80 (176)	200 (440)	320 (704)	370 (814)
	<b>grade 24</b>	70 (154)	190 (418)	290 (638)	360 (792)
	<b>grade 40</b>	40 (88)	100 (220)	150 (330)	190 (418)

		MAG 1400 L	MAG 1500 H	MAG 1600 M	MAG 1600 H	MAG 1800 H
<b>OUTPUT CHARACTERISTICS</b>						
Magnet coil power max.	<b>KW</b>	10,0	12,5	15,0	16,0	20,0
Operating voltage	<b>VDC</b>	220±5%				
Magnet coils allowed resistance (20 °C)	<b>Ohm</b>	4.8 ± 5%	3.9 ± 5%	3.2 ± 5%	3.0 ± 5%	2.4 ± 5%
<b>NOMINAL LIFTING CAPACITY</b>						
Tear-off w/ air gap Ø/300	<b>kg (lbs)</b>	18000 (74800)	42000 (92400)	44000 (96800)	51500 (113300)	70000 (154000)
Slabs, blocks	<b>kg (lbs)</b>	9000 (20900)	17000 (37400)	22000 (48400)	27500 (60500)	35000 (77000)
Cast iron pigs	<b>kg (lbs)</b>	580 (2420)	1450 (3190)	1330 (2920)	1650 (3630)	2150 (4730)
Scrap, kg (lbs)	<b>grade 3A</b>	530 (1160)	1300 (2860)	1220 (2680)	1500 (3300)	2000 (4400)
	<b>grade 24</b>	510 (1120)	1200 (2640)	1150 (2530)	1400 (3080)	1800 (3960)
	<b>grade 40</b>	240 (530)	600 (1320)	580 (1270)	700 (1540)	900 (1980)

Other options i.e. rectangular and other shapes of magnets available by request.





Menotie 3  
FI-33470 Ylöjärvi, Finland  
tel: +358 3 3488 200  
info@dynaset.com



#### ELECTRICITY

HG Hydraulic Generator  
HGV Variable Hydraulic Generator  
HWG Hydraulic Welding Generator  
HGG Hydraulic Ground Power Generator



#### MAGNET POWER

HMG Hydraulic Magnet Generator  
HMAG Hydraulic Magnet  
MAG Lift Magnet



#### HIGH PRESSURE WATER

HPW Hydraulic High Pressure Water Pump  
HPW Hydraulic Power Washer  
KPL High Pressure Street Washing Unit  
PPL High Pressure Pipe Cleaning Unit  
HPW-DUST High Pressure Dust Suppression System  
HPW-FIRE High Pressure Firefighting System  
FP Fire Fighting Piercing Kit  
HDF Hydraulic Drilling Fluid Pump  
JPL High Pressure Bin Washing System  
HSP Hydraulic Submersible Pump



#### VIBRATION

HVB Hydraulic Vibra  
HVD Hydraulic Directional Vibra



#### POWER BOOSTING

HPI Hydraulic Pressure Intensifier  
HPI-C Hydraulic Pressure Intensifier for Cylinder



#### COMPRESSED AIR

HK Hydraulic Compressor (piston)  
HKL Hydraulic Rotary Vane Compressor  
HKR Hydraulic Screw Compressor



#### KNOW-HOW

HHK Hydraulic Grinder  
HV/HVY Hydraulic Winch / Winch Unit  
Hydraulic Power Take-off (PTO)  
Hydraulic Power Unit Technology  
De-Icing Technology  
Installation Valves

[www.dynaset.com](http://www.dynaset.com)

