

# Cellularis® | Discovery

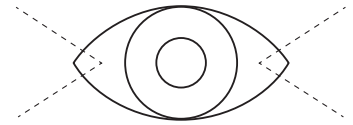
See the invisible



**CELLULARIS® Discovery**, the disruptive ophthalmic camera from EarlySight, delivers cellular level images of various structures of the retina and optic disc to investigate the eye anatomy and the pathological processes in a completely new perspective.

### Lateral illumination

Revolutionary patented non-contact transscleral flood illumination creates contrast to hidden cells and biological structures affected by eye diseases, such as retinal pigment epithelium cells.



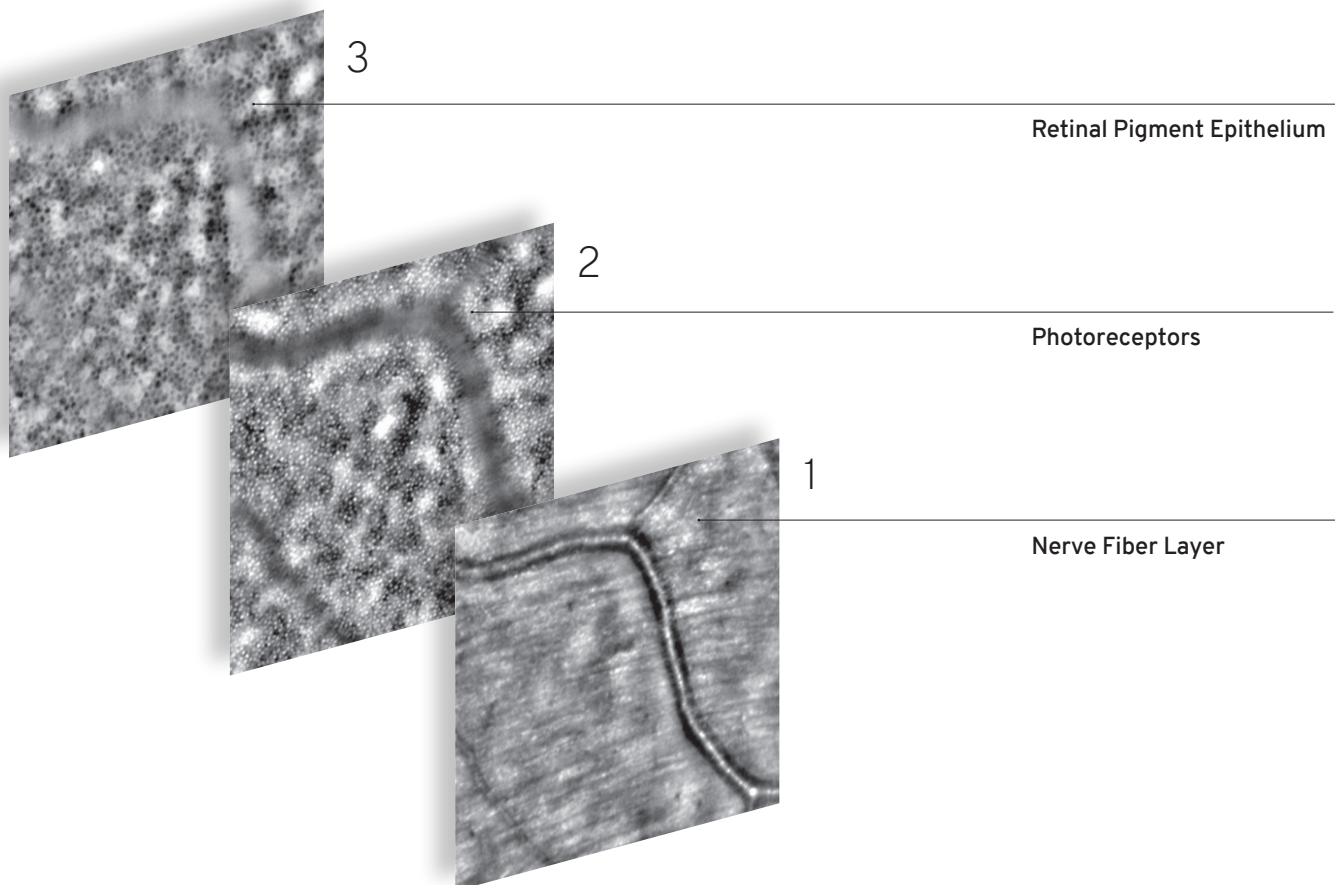
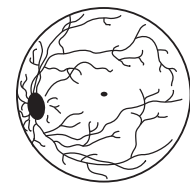
### The “non-invasive biopsy”

A revamped and easy-to-use adaptive optics technology brings imaging resolution to a completely new level. Look at single cells composing the tissue, as if under a microscope, observe pathological processes in details.

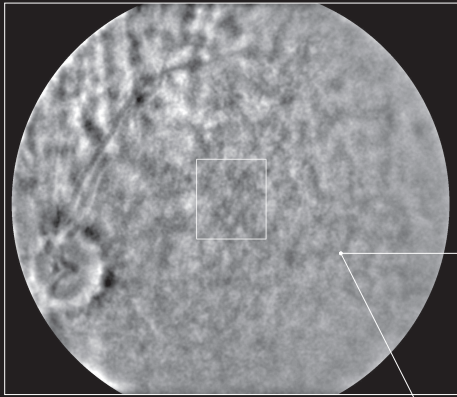


### Fundus overview

Optimize your examination workflow by targeting immediately the area of interest. Cellularis offers a widefield fundus overview image simultaneously with the cellular level image to easily locate the imaged area within the eye.



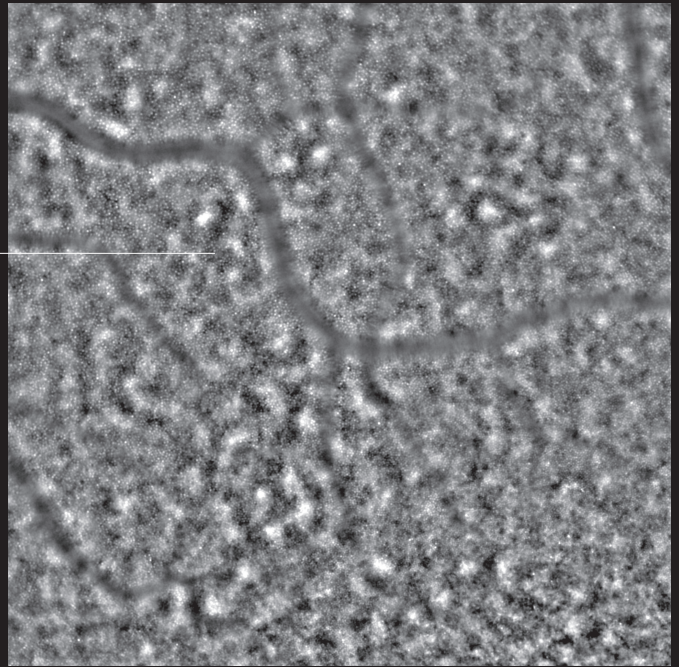




Live Fundus Overview to select the Cellular View area in real-time.

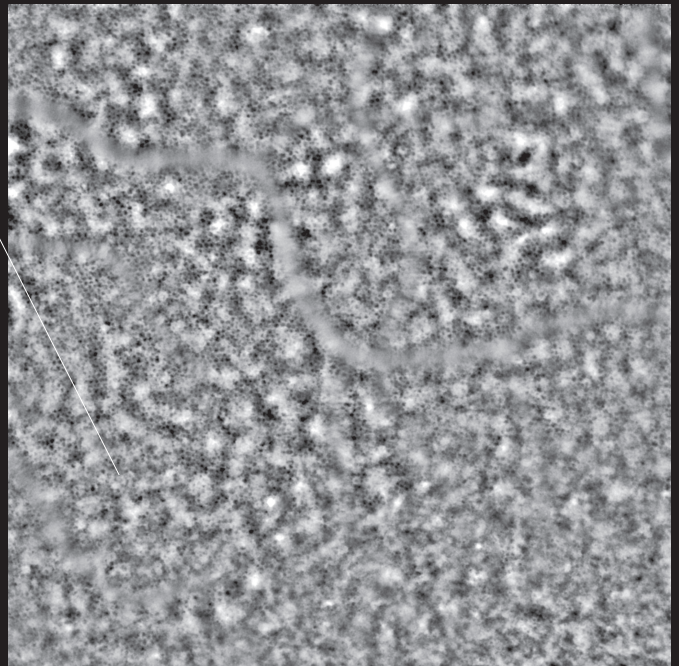
Take Retinal Pigment Epithelium and Photoreceptors images in a single acquisition and in less than 3 seconds.

1



Photoreceptors 6.7° X 6.7°

2



Retinal Pigment Epithelium 6.7° X 6.7°



## Patient-centric design with efficient user experience

Fast and comfortable image acquisition for the patient to easily locate the imaged area within the eye. Ergonomic and easy-to-use instrument to facilitate eye examinations.

# CELLULARIS® Discovery, technical specifications

## Key parameters

Methodology	Reflectance imaging
Light sources	Infrared LED and SLD (750 to 890 nm)
Lateral resolution in tissue*	2–3 µm
Pixel pitch*	1 µm
Focusing range in tissue*	300 µm
Cellular View image field angle*	6.7° x 6.7°
Fundus Overview image field angle	30° x 30°
Min. pupil diameter	4 mm
Refractive error adjustment	+15 D to -15 D, continuous
Acquisition time	2.5s
Fixation targets	internal and external

## Key Software features

Simultaneous live widefield overview and cellular-level imaging
Pupil alignment feedback
Image comparison for follow-up examination

## General information

Input voltage and frequency:	100–240 V, 50–60 Hz
Power consumption (max):	450 W
Dimensions	(L x W x H): 65cm x 65cm x 61cm
Weight:	50 kg

\* Values may vary from person to person



**EarlySight SA**  
Avenue de Sécheron 15  
1202 Genève  
SWITZERLAND  
info@earlysight.com  
www.earlysight.com

THE CONTENTS OF THE BROCHURE MAY DIFFER FROM THE CURRENT STATUS OF APPROVAL OF THE PRODUCT OR SERVICE OFFERING IN YOUR COUNTRY. PLEASE CONTACT EARLYSIGHT FOR MORE INFORMATION. SUBJECT TO CHANGES IN DESIGN AND SCOPE OF DELIVERY AND DUE TO ONGOING TECHNICAL DEVELOPMENT.