



**PROTEC ATTACHMENTS**

**2025**

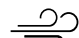
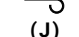
[WWW.PROTECATTACHMENTS.COM](http://WWW.PROTECATTACHMENTS.COM)

**PUTTING SOLUTIONS FIRST**

**LB SERIES**

# ROCKBREAKER

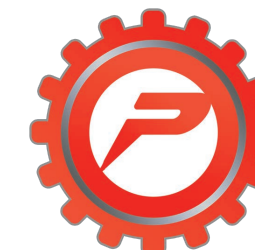


MODEL		LB100	LB150	LB250	LB500	LB750
CARRIER W	(T)	1.2-3.5	1.5-4.5	3.8	6-11	8-16
WEIGHT	(KG)	105	145	225	420	650
H STAN TOOL	MM	1000	1100	1380	1900	1850
CHISEL DIAM	MM	45	50	64	95	95
REQ OIL SUP	L/MIN	20-30	20-35	30-55	40-80	70-90
MAX W PRESS		70-140	80-115	100-160	100-160	100-160
BLOW PM		700-1200	600-1150	580-1160	550-1000	600-900
ENERGY PB	(J)	240	380	700	1500	1800
MAX BP	(BAR)	25	25	25	25	25
INNER DIAM .IN	"	1/2"	1/2"	3/4"	3/4"	3/4"
INNER DIAM .OUT	"	1/2"	1/2"	3/4"	3/4"	3/4"



[WWW.PROTECATTACHMENTS.COM](http://WWW.PROTECATTACHMENTS.COM)

## PUTTING SOLUTIONS FIRST

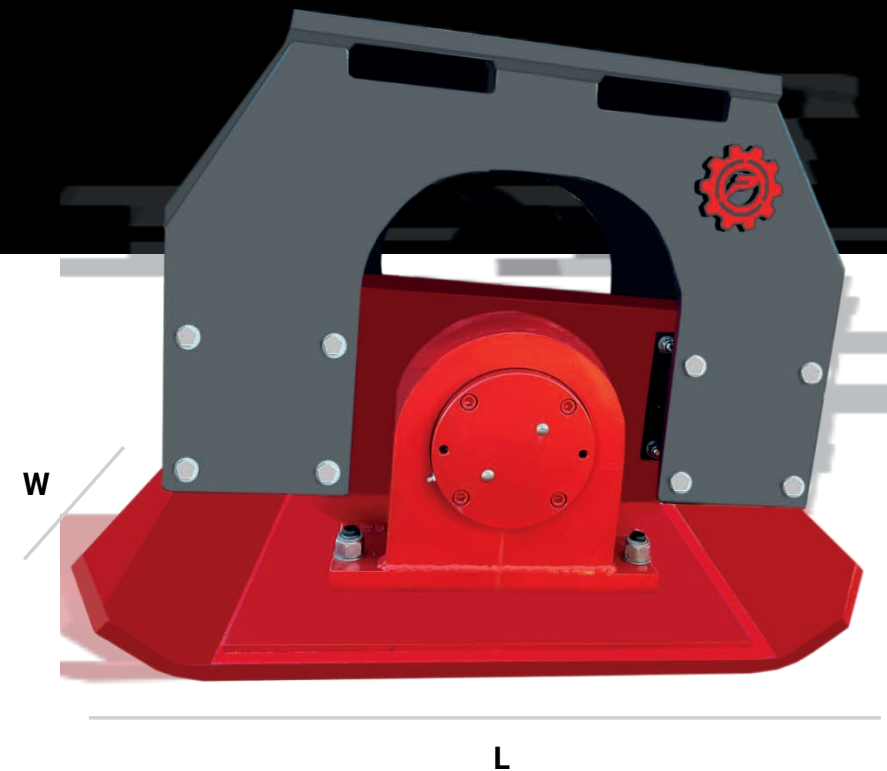


PC SERIES

# COMPACTOR PLATE

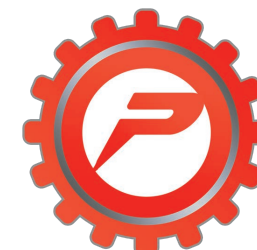


MODEL		PC18	PC43	PC90
CARRIER W	T	2.5-6	7-15	12-25
SERVICE W	KG	190	880	1130
HEIGHT	MM	486	764	786
PLATE DIM W/L	MM	295'721	610'870	800'1364
PLATE COV	M2	0.17	0.68	0.9
V FORCE	HZ	30	25	37
V FREQ	N/MIN	2.100	2.200	2.200
OP PRESSURE	BAR	150	150	150
OIL FLOW	I/MIN	30	114	151



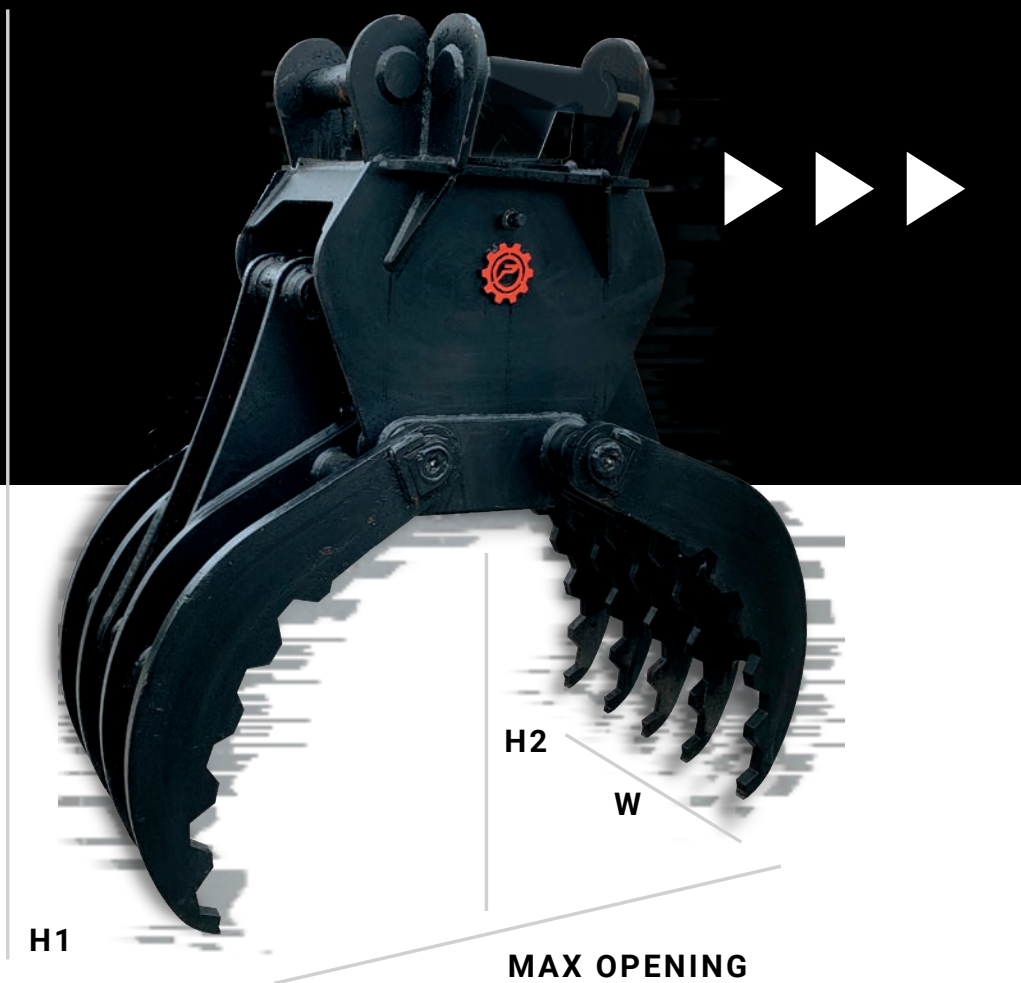
[WWW.PROTECATTACHMENTS.COM](http://WWW.PROTECATTACHMENTS.COM)

## PUTTING SOLUTIONS FIRST



TG SERIES

# TIMBERGRAB



MODEL		TG03	TG05	TG08	TG013
MAX OPEN	MM	690	770	880	1056
H1	MM	870	960	1100	1247
H2	MM	400	440	500	595
W	MM	350	400	420	480
WEIGHT	KG	180	220	300	500
MACHINE	T	3T	5T	8T	13T



[WWW.PROTECATTACHMENTS.COM](http://WWW.PROTECATTACHMENTS.COM)

## PUTTING SOLUTIONS FIRST

